

# Florida Department of Business and Professional Regulation

## Division of Pari-Mutuel Wagering

**84<sup>th</sup> Annual Report  
Fiscal Year 2014-2015**



Rick Scott  
*Governor*

Ken Lawson  
*Secretary*

Jonathan Zachem  
*Director*

**DEPARTMENT OF BUSINESS AND PROFESSIONAL REGULATION  
 DIVISION OF PARI-MUTUEL WAGERING  
 COMPREHENSIVE ANNUAL REPORT  
 FISCAL YEAR ENDING JUNE 30, 2015  
[www.myfloridalicense.com/dbpr/pmw](http://www.myfloridalicense.com/dbpr/pmw)**

**INTRODUCTORY SECTION**

Overview and Explanation of Report Terminology .....	2
Division Overview.....	3
Events Shaping the 2014/2015 Racing/Gaming Season in Florida .....	6

**STATISTICAL SECTION**

**Pari-Mutuel Statistical Data**

Fiscal Years Comparative Data .....	7
Graphs - Historical Pari-Mutuel Wagering Activity .....	8
Components of Pari-Mutuel Handle From Performances .....	11
Total State Revenue From Performances .....	12
Total Regular and Charity/Scholarship Handle.....	13
Total Intertrack Wagering Handle by Guest.....	14
Charity and Scholarship Performances, Racing Scholarship Trust Fund, and Abandoned Winning Tickets.....	17

**Cardroom Statistical Data**

Cardroom Comparative Data.....	18
Components of Cardroom Revenue by Association.....	19

**Slot Statistical Data**

Slot Comparative Data.....	20
Revenue per Machine Compared to Average Number of Machines by Month.....	21

**DATA BY PERMITHOLDER/FACILITY**

Pari-Mutuel Map by Permitholder/Facility.....	24
Contact and Operating Information by Permitholder/Facility.....	25
Promotional Programs for Florida-Bred Horses.....	36
Drug Positives Statistical Data.....	37

**FINANCIAL STATEMENTS**

Summary of State Revenue from Cardroom, Pari-Mutuel, Slot Activities, and Indian Gaming Compact.....	38
Balance Sheet - Special Revenue Fund.....	39
Statement of Revenue, Expenditures & Changes in Fund Balance - Budget & Actual – Special Revenue Fund.....	40

**CARDROOM, PARI-MUTUEL, AND SLOT STATUTE MATRIX**

Summary of Pari-Mutuel Handle Distribution.....	41
Summary of Cardroom Distribution.....	44
Summary of Slot Distribution.....	45

# INTRODUCTION

## OVERVIEW

This annual report encompasses the fiscal year which began July 1, 2014, and ended June 30, 2015. This is the 84th annual report in the series. The first annual report was issued for Fiscal Year 1931/1932, the initial year of legalized pari-mutuel wagering. In Florida, pari-mutuel wagering is authorized for horse racing, harness horse racing, quarter horse racing, greyhound racing, jai alai games, and cardroom poker games. Additionally, slot machine gaming at pari-mutuel facilities is authorized in Broward and Miami-Dade counties. Florida is one of the primary pari-mutuel states in the nation, and is the leading state in greyhound racing, as well as a major horse racing state. Florida is also the only state in the United States where live jai alai games are conducted. As of June 30, 2015, there were 30 pari-mutuel facilities located throughout the state, with one of the facilities holding both limited intertrack wagering and pari-mutuel wagering. This annual report, which is required by Florida law, is intended to inform the Governor, the Legislature, the industry, and other interested parties of wagering activities at authorized pari-mutuel facilities. The report is organized into five primary sections:

- 1. Introductory Section** - An overview of the Division of Pari-Mutuel Wagering and a report of events that occurred impacting the division's oversight of permits or events that affected the operation of facilities.
- 2. Statistical Section** – Details various cardroom, pari-mutuel, and slot statistical data by individual racing association or fronton.
- 3. Data by Association/Facility** – Includes a map showing location of each association/permit that operated during the 2014/2015 Fiscal Year, contact and operating information by association/permit, promotional programs for Florida-bred horses and impermissible substance positives statistical data.
- 4. Financial Section** - Official financial statements of the Division of Pari-Mutuel Wagering.
- 5. Statute Matrix** - A table that summarizes the statutes regarding the taxes and fees applicable to pari-mutuel wagering and cardroom activity. It also includes a summary of the statutes regarding the taxes, fees, fines, and penalties with respect to slot machine gaming.

## EXPLANATION OF REPORT TERMINOLOGY

Florida law requires intertrack wagers to be combined with the wagering pools of the host or the broadcasting Florida track or fronton. The law also requires that the host take-out on intertrack wagers be the same as for on-track wagers; however, the distribution of the take-out may be different. The tax structure for on-track and intertrack wagering is explained in more detail in the statute matrix section.

Pursuant to Section 550.002(13), Florida Statutes, handle is defined as the aggregate contributions to pari-mutuel pools. For purposes of this report, the four types of handle detailed in this report are as follows:

- **Live Ontrack:** Handle from live races/games at the track/fronton.
- **Simulcast:** Handle from races/games originating from out-of-state and broadcast to a Florida track/fronton.
- **Intertrack:** Handle from where a Florida track/fronton (acting as host) broadcast live races/games to other Florida tracks/frontons.
- **Intertrack Simulcast:** Handle from rebroadcasting of simulcast signals received by a Florida track/fronton to other Florida tracks/frontons.

All intertrack and intertrack simulcast handle is detailed by the host permitholder in this report. These schedules reflect combined wagering statistics for all guest facilities that received broadcasts and conducted wagering and included in the wagering pools of the host. For host permitholders, a summary of intertrack handle components for each guest is shown in the statistical section of this report. The schedules of intertrack wagering handle by guest include data on wagers from intertrack handle and intertrack simulcast handle. Any paid attendance, admission tax, purses paid, or players' awards paid are detailed in the data by association/permit section of the report.

## **THE DIVISION OF PARI-MUTUEL WAGERING**

The Division of Pari-Mutuel Wagering is a program area of the Department of Business and Professional Regulation within the Executive Branch of Florida's government. The division is charged with regulating Florida's pari-mutuel, cardroom and slot machine gaming industries, as authorized by Chapters 550, 551, and Section 849.086, Florida Statutes, as well as collecting and safeguarding associated revenues due to the state. Authorized pari-mutuel events include harness racing, quarter horse racing, thoroughbred racing, greyhound racing, and jai alai. Pari-Mutuel Wagering was originally authorized by the Legislature in 1931. Since that time, the division has evolved from a racing commission into a professional regulatory organization overseeing a complex and dynamic industry located throughout the state. Additionally, the Division of Pari-Mutuel Wagering was designated by the Florida Legislature as the State Compliance Agency with the authority to carry out the state's oversight responsibilities in accordance with the provisions outlined in the Compact between the State of Florida and the Seminole Tribe of Florida.

### **OFFICE OF THE DIRECTOR**

The Office of the Director provides leadership, oversight, and administration of the six functional areas within the division. Specific responsibilities include budget planning, rule promulgation, policy development, legislative analysis of proposed legislation, strategic planning, fleet management, staff development and enforcement of administrative actions. Additionally, the Office of the Director ensures that all areas of the division operate in a cooperative effort to ensure efficient regulatory oversight of the industry.

The division's structure includes six functional areas which act under the management of the Office of the Director. These functional areas include Revenue and Financial Analysis, Auditing, Operations, Investigations, Slot Operations, and State Compliance Agency. Each area focuses on a different aspect of regulation within the cardroom, pari-mutuel and slot machine gaming industry, as well as the state's Compact with the Seminole Tribe of Florida, in an effort to protect state revenues and maintain the public's confidence in the integrity of the wagering activity.

### **OFFICE OF OPERATIONS**

All individuals and businesses who work or conduct business at a racetrack, fronton, cardroom, or slot machine facility and who have access to wagers, restricted areas, and/or racing animals, must obtain an occupational license issued by the division. Every racing and cardroom occupational licensee is fingerprinted upon initial licensure and every three years thereafter; and every slot machine occupational licensee is fingerprinted upon initial licensure and every three years thereafter. Each set of fingerprints is submitted electronically to the Florida Department of Law Enforcement and the Federal Bureau of Investigation for processing. During Fiscal Year 2014/2015, Operations' Licensing Section processed 23,940 occupational license applications for businesses and individuals, of which 3,008 were related to cardroom operations; 16,786 were related to racing operations; and 4,146 were related to slot machine operations. Additionally, the Office of Operations processes applications for the issuance of all pari-mutuel permitholder Annual Operating Dates Licenses, Cardroom Operator Licenses, and Slot Machine Licenses to authorized facilities.

The Office of Operations is also responsible for ensuring that the day-to-day operation of races and games is conducted in accordance with Florida's pari-mutuel statutes and rules. The State Stewards monitor each horserace and conduct inquiries and hearings for alleged violations of the state's pari-mutuel statutes and rules. The Stewards and Hearing Officers issued 75 rulings and 224 consent orders; assessed fines totaling \$92,400; and imposed 12 license suspensions for violations during Fiscal Year 2014/2015.

Operations' staff collects urine and blood samples from racing animals which are sent to the University of Florida, College of Medicine Racing Laboratory for analysis. The Racing Laboratory performs its services under an annual contract with the division. State veterinarians and veterinary assistants collected 67,570 samples that included 51,233 greyhound urine samples and 16,337 horse urine and blood samples. Additionally, division investigators submitted 17 investigative samples during Fiscal Year 2014/2015. There were 172 positive findings of impermissible substances in the samples collected.

## **OFFICE OF AUDITING**

The Office of Auditing is responsible for conducting various audits to ensure the integrity of wagering activity and protect the wagering public by ensuring that cardroom, pari-mutuel and slot machine wagering is conducted in compliance with the Florida Statutes and Florida Administrative Code. Such compliance issues include pari-mutuel broadcast exchanges; verification that takeout/commissions are consistent with notification requirements; interstate wagering restrictions; identification of fraudulent activity; verification that statutory accounting procedures are utilized; oversight of the commingling of wagering pools; transmission of pari-mutuel information; proper payments to winning pari-mutuel patrons; approval of totalisator security plans and software upgrades. Additionally, the auditing staff maintains primary oversight for cardroom operations, which includes: auditing internal control procedures; auditing jackpot accounts; monitoring daily operations; coordinating inspections; and auditing for compliance. The auditing team is responsible for communicating with the licensed totalisator companies and for the input of pari-mutuel handle and wagering information into the division's Central Monitoring System (CMS).

During Fiscal Year 2014/2015, the auditing team conducted 19 greyhound purse audits, 19 greyhound adoption proceeds audits, 30 mutuels audits, 31 escheat audits, 24 cardroom audits, 24 surveillance tape audits, 22 jackpot audits, eight slot audits, eight players' club audits, three breeders' awards audits and 35 totalisator system malfunction reports. Auditing's cardroom coordinators processed 226 internal control revisions.

## **OFFICE OF INVESTIGATIONS**

The Office of Investigations examines statutory and rule violations that occur at pari-mutuel facilities, cardrooms, and slot machine gaming locations. Investigative staff is responsible for investigating Class I drug positives analyzed and identified by the University of Florida, College of Medicine Racing Laboratory and deaths of racing animals that occur at pari-mutuel facilities. The investigations vary from patron complaints, and complaints of animal cruelty to the use of performance altering medications and/or illegal substances during races. A case may result in issuance of a warning letter, consent order, administrative fine, license suspension, license revocation, hearing before a designated hearing officer or referral to either regulatory or law enforcement agencies for criminal prosecution. During Fiscal Year 2014/2015, there were 545 investigations conducted.

The investigation staff also conducts background examinations of potential permit holders which involves an in-depth review of the applicant's financial records in order to ensure compliance with Sections 550.054, 550.1815, and 849.086, Florida Statutes. Additionally, investigators perform background reviews of Pari-Mutuel Wagering Occupational License requests from applicants with criminal records requesting a waiver from the Division Director in accordance with Section 550.105, Florida Statutes.

The investigation staff also conducted 5,262 in-depth inspections of pari-mutuel and slot machine facilities, including cardrooms, greyhound kennels and horse stables; both prior to opening as well as throughout the operating year.

## **OFFICE OF SLOT OPERATIONS**

The Slot Operations' staff is responsible for overseeing state personnel located at each of the four pari-mutuel facilities in Broward County and each of the four pari-mutuel facilities in Miami-Dade County that have slot machine gaming. To ensure the integrity of slot machine gaming activity, the Slot Operations' staff oversees the day-to-day operations at the slot machine facilities, performs daily revenue reconciliations, verifies that every slot machine has been certified by an independent testing laboratory, issues slot machine occupational licenses to individuals, and ensures slot machine gaming activity is in compliance with the requirements of Chapter 551, Florida Statutes, Chapter 61D-14, Florida Administrative Code, as well as the internal controls of the individual facilities.

During Fiscal Year 2014/2015, the Slot Operations' staff completed 5,834 inspections. Of those, 127 items were found to be non-compliant, of which nine were turned over to Investigations and to the Department's Office of the General Counsel for formal proceedings. Slot machine facilities were notified of 127 observations so that appropriate internal action, including employee disciplinary action, advanced training and/or re-training of facility personnel could occur. There were 17 individual and facility Consent Orders issued at the regional level totaling \$10,150 in fines or final warning notices.

There were 905 shipments of authorized slot machines and components, which required the verification of 1,846 slot machines and 12,564 parts. The Slot Operations' staff authorized and monitored 11,403 slot machine conversions, denomination and/or game theme changes, slot machine relocations and other related slot machine changes.

## **OFFICE OF REVENUE AND FINANCIAL ANALYSIS**

The Revenue and Financial Analysis staff is responsible for safeguarding and accounting for state revenues in accordance with Florida Statutes and the Florida Administrative Code, as it relates to cardroom, pari-mutuel and slot gaming activities. The staff develops revenue projections for the Revenue Estimating Conferences, maintains cash flow statements for timely transfer to the State's General Revenue Fund and to the Education Enhancement Trust Fund, provides oversight of the division's budget, develops the annual report, and determines fiscal impacts on proposed legislation impacting the industry.

During Fiscal Year 2014/2015, \$225,775,826 in state revenues pertaining to cardroom, pari-mutuel and slot machine gaming were collected. The Revenue and Financial Analysis staff also reconciled 706 permitholder monthly remittance reports, conducted 15 charity day audits and 34 uniform annual report audits. The Revenue and Financial Analysis staff compiles statistical information for cardroom, pari-mutuel and slot machine gaming, and performs analyses requested by the department, the Executive Office of the Governor, the Legislature and the industry.

## **STATE COMPLIANCE AGENCY**

The Gaming Compact between the Seminole Tribe of Florida and the State of Florida, 75 FR 38833, was executed by the Governor on April 7, 2010, and ratified by the United States Department of the Interior on July 7, 2010. Pursuant to § 285.710, Florida Statutes, the Division of Pari-Mutuel Wagering was designated by the Florida Legislature as the State Compliance Agency with the authority to carry out the State's oversight responsibilities in accordance with the provisions outlined in the Compact. The Seminole Tribe of Florida operates seven casinos located in Broward, Hillsborough, Collier, Glades and Hendry counties.

During Fiscal Year 2014/2015, the State Compliance Agency completed 76 inspections of tribal gaming facilities spanning over 736 man hours. Additionally, \$255,610,619 in revenue sharing with the Tribe was collected. Of this, \$7,119,369 was distributed to local governments, including both counties and municipalities, as required by § 285.710, Florida Statutes.

A similar Compact does not exist with the Miccosukee Tribe, and therefore they continue to operate exclusively under Federal jurisdiction. For additional information on the Miccosukee's gaming operations, contact the National Indian Gaming Commission, [www.nigc.gov](http://www.nigc.gov), or the United States Department of Interior, 1441 L Street N.W., Suite 9100, Washington, D.C. 20005-3584, Telephone 202.632.7003.

## Events Shaping the 2014/2015 Racing/Gaming Season in Florida

- During the 2015 Legislative Session, revisions were made to Section 550.2415, Florida Statutes. Changes include: the addition of the Association of Racing Commissioners International (ARCI) Controlled Therapeutic Medications Schedule (CTMS) Version 2.1 (4/17/2014); the elimination of the use of prednisolone sodium succinate on race day; the elimination of the requirement for thin-layer chromatography (TLC) screening by the division's primary laboratory; the inclusion of the Department of Agriculture and Consumer Services participation in rulemaking and study review for recommending threshold levels; and conditions for the use of furosemide (Salix).
- September 2014, the division issued a Consent Order for case numbers 2014011900 and 2014012798. In resolution of this matter, Jefferson County Kennel Club retains their pari-mutuel wagering permit in accordance with Section 550, Florida Statutes, but agrees to suspension (9/23/2014 through 6/30/2017) of that permit for the purpose of applying for performance dates and a cardroom license until the 2017/2018 license year.
- Dania Entertainment Center closed December 2014, for major renovations.
- Calder Race Course, Inc., closed/voluntarily relinquished their cardroom license on June 27, 2014, and entered into a lease agreement with Gulfstream Park to run their live meet during 2014/2015.
- Tropical Park, LLC, entered into a lease agreement with Gulfstream Park and ran their live meet at that location.



# STATISTICAL SECTION

## FISCAL YEARS COMPARATIVE DATA

Beginning with the 1931/1932 Fiscal Year, the state began collecting taxes on pari-mutuel wagering. In most recent years, pari-mutuel handle has steadily declined. During that initial year, the pari-mutuel industry operated 462 racing days in Florida, which resulted in state revenue of \$737,301; total paid attendance of 1,157,161; and total pari-mutuel handle of \$17,365,424.

Since Fiscal Year 1931/1932, approximately \$74.8 billion in pari-mutuel handle wagered resulted in \$4.37 billion in state revenue. This fiscal year, the pari-mutuel industry operated 3,441 racing days, which resulted in state revenue of \$12,589,460; total paid attendance of 377,660; and total pari-mutuel handle of \$779,336,136.

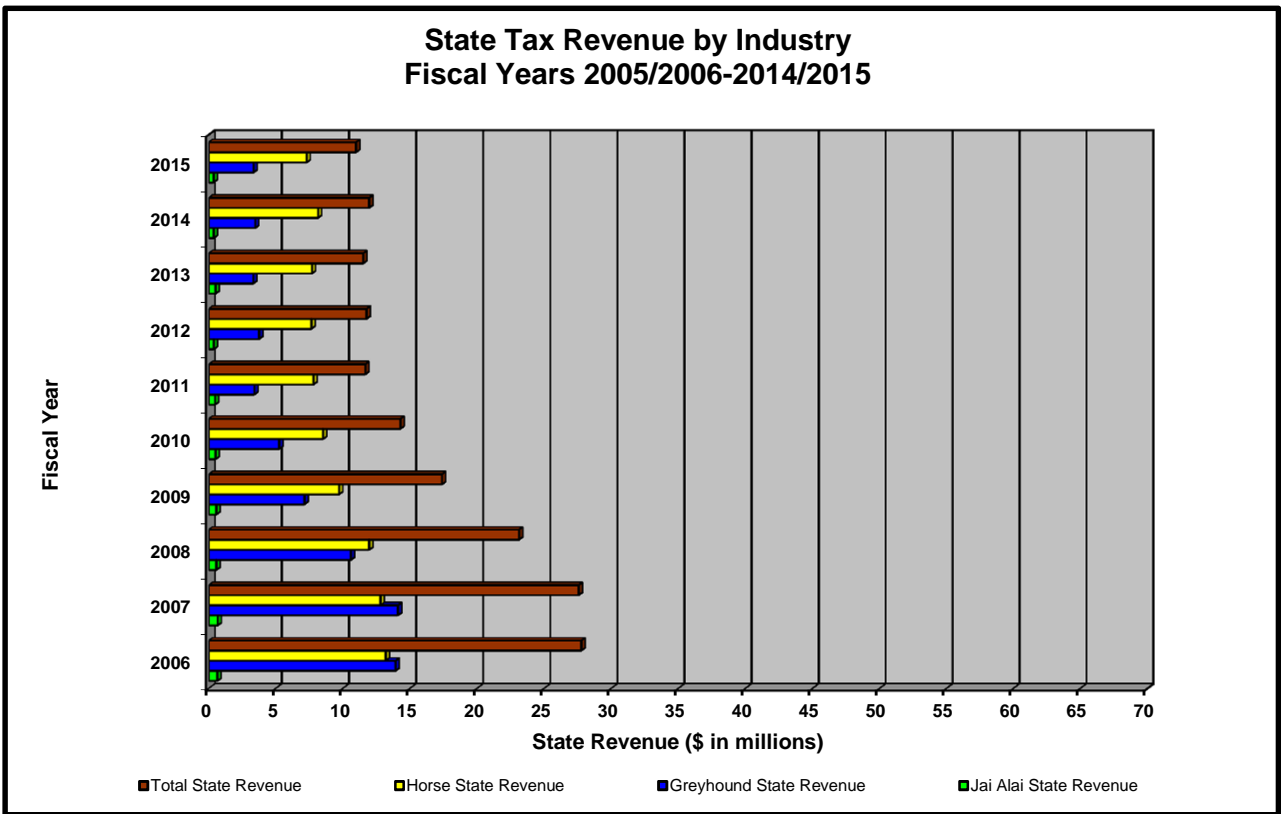
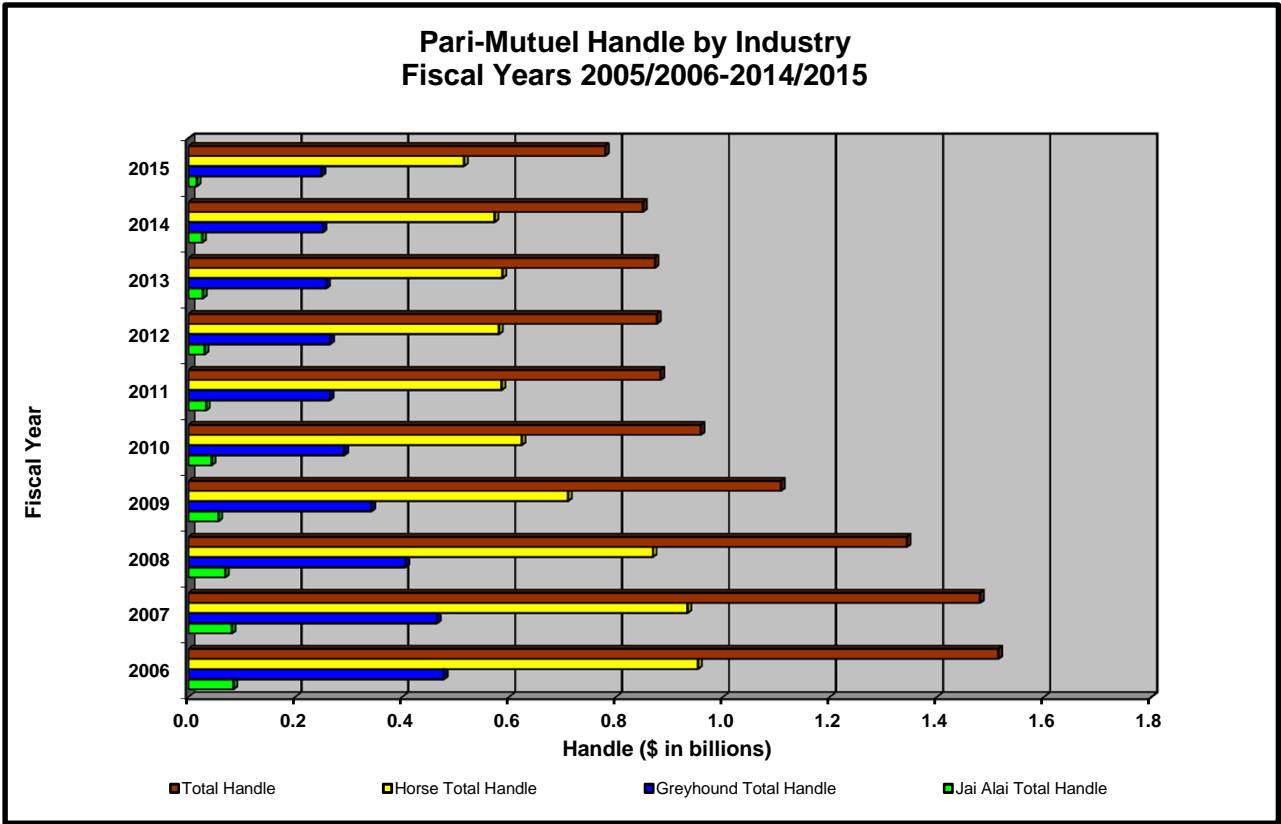
Over the last 10 years, pari-mutuel wagering has experienced a 48.6 percent decline in handle, and total state revenue has decreased 64.2 percent, along with a 31.1 percent decrease in the number of racing days. Shown below is a summary of pari-mutuel handle and state revenue for Fiscal Years 2005/2006 through 2014/2015.

### PARI-MUTUEL HANDLE AND STATE REVENUE SUMMARY

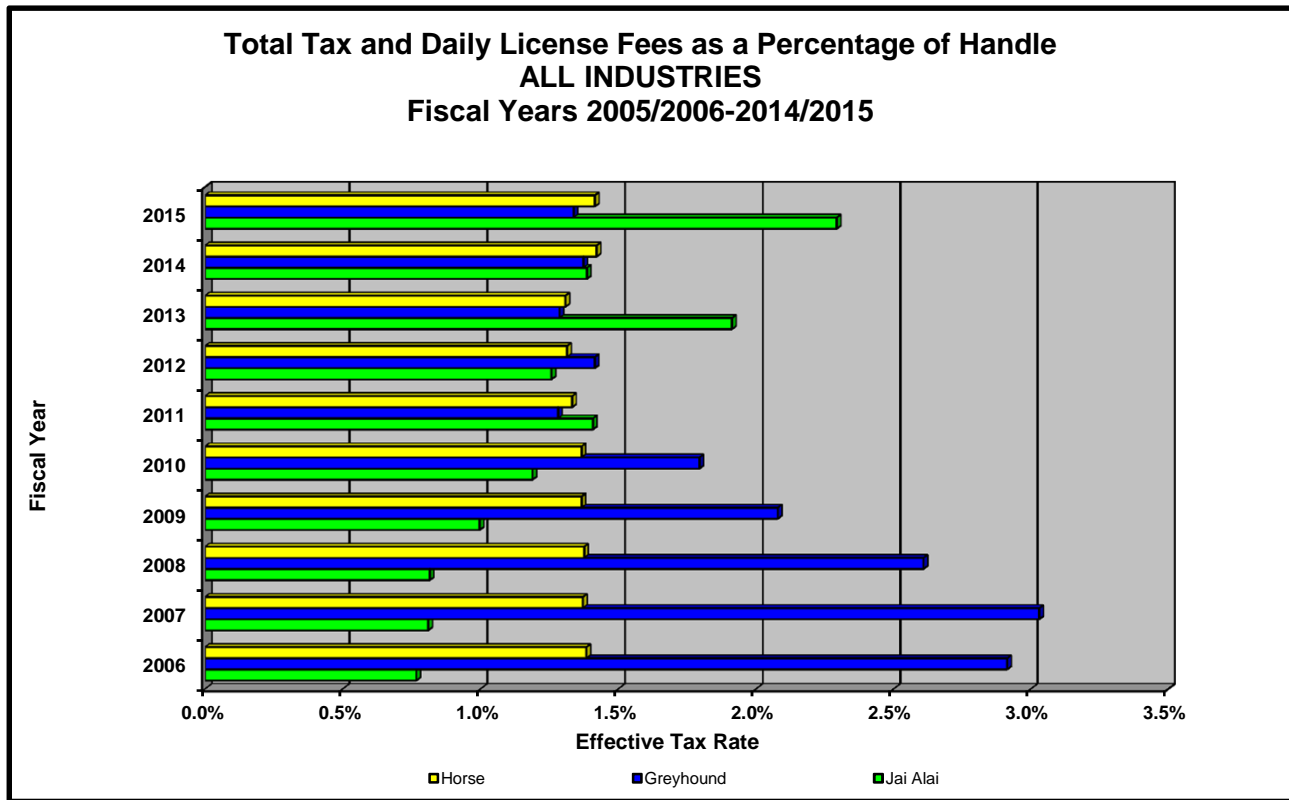
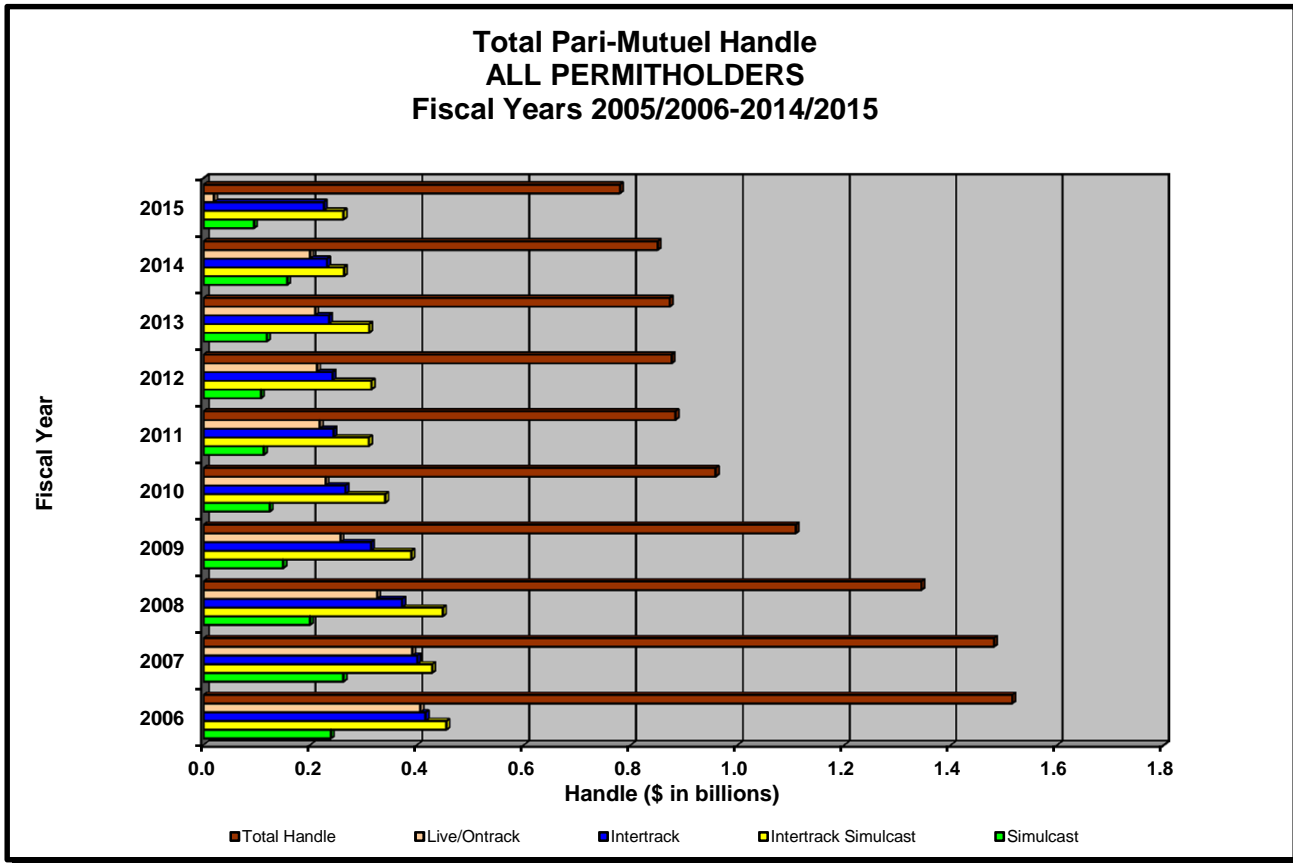
<i>Fiscal Year</i>	<i>Number of Racing Days</i>	<i>Total Paid Attendance</i>	<i>Total Pari-Mutuel Handle</i>	<i>Total State Revenue <sup>(1)</sup></i>	<i>State Revenue as a Percent of Handle</i>
2005/2006	4,993	2,066,192	\$1,514,758,761	\$35,178,969	2.32%
2006/2007	5,592	2,351,126	\$1,480,427,370	\$30,214,151	2.04%
2007/2008	4,857	1,419,748	\$1,343,912,504	\$25,657,727	1.91%
2008/2009	4,364	722,699	\$1,108,401,006	\$19,814,027	1.79%
2009/2010	4,167	614,889	\$ 958,537,395	\$16,706,611	1.74%
2010/2011	3,633	507,804	\$ 883,381,429	\$13,640,020	1.54%
2011/2012	3,602	469,497	\$ 876,146,485	\$13,802,723	1.58%
2012/2013	3,628	430,707	\$ 872,272,660	\$13,200,709	1.51%
2013/2014	3,582	383,864	\$ 850,136,735	\$13,785,681	1.62%
2014/2015	3,441	377,660	\$ 779,336,136	\$12,589,460	1.62%

(1) Beginning 2006/2007, this figure includes state revenue from pari-mutuel performances and other state revenue, and does not include state revenue from cardroom and slot operations.

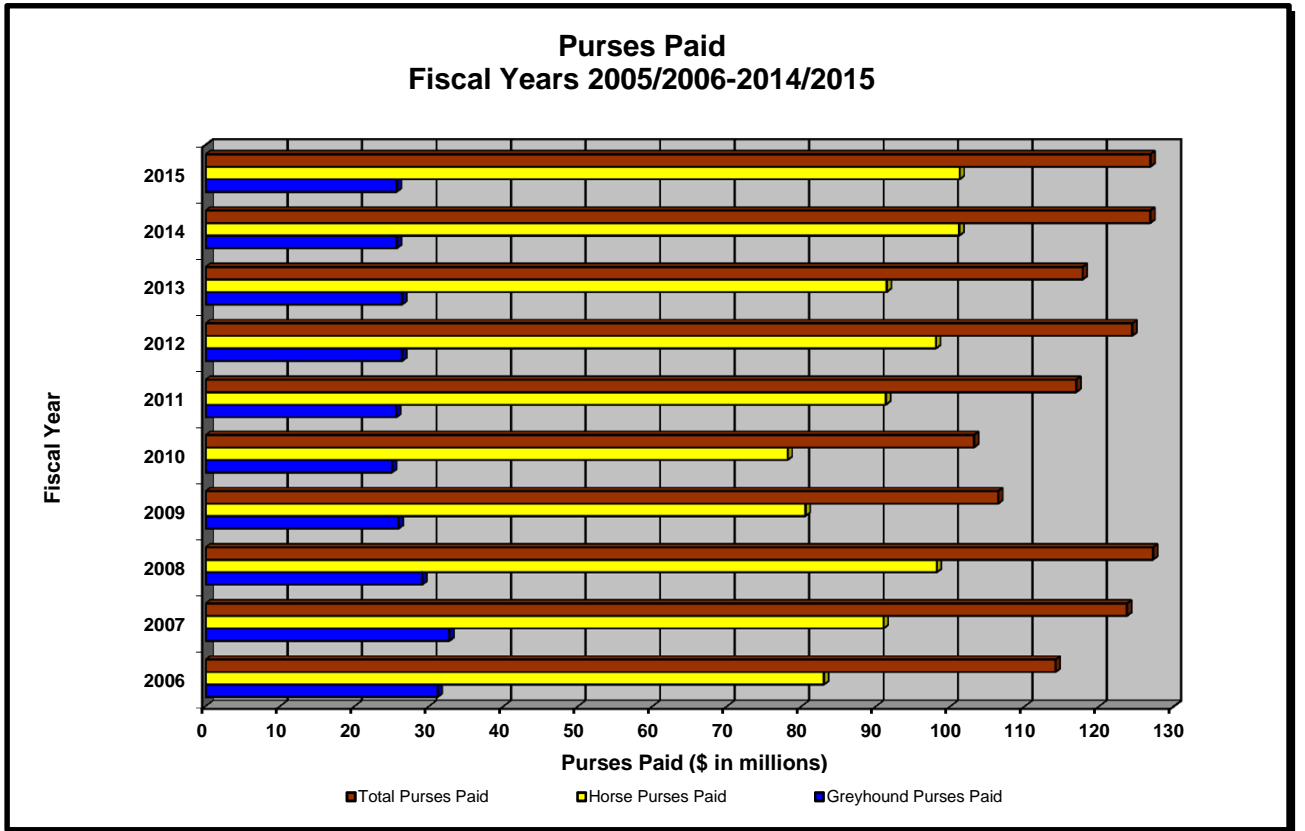
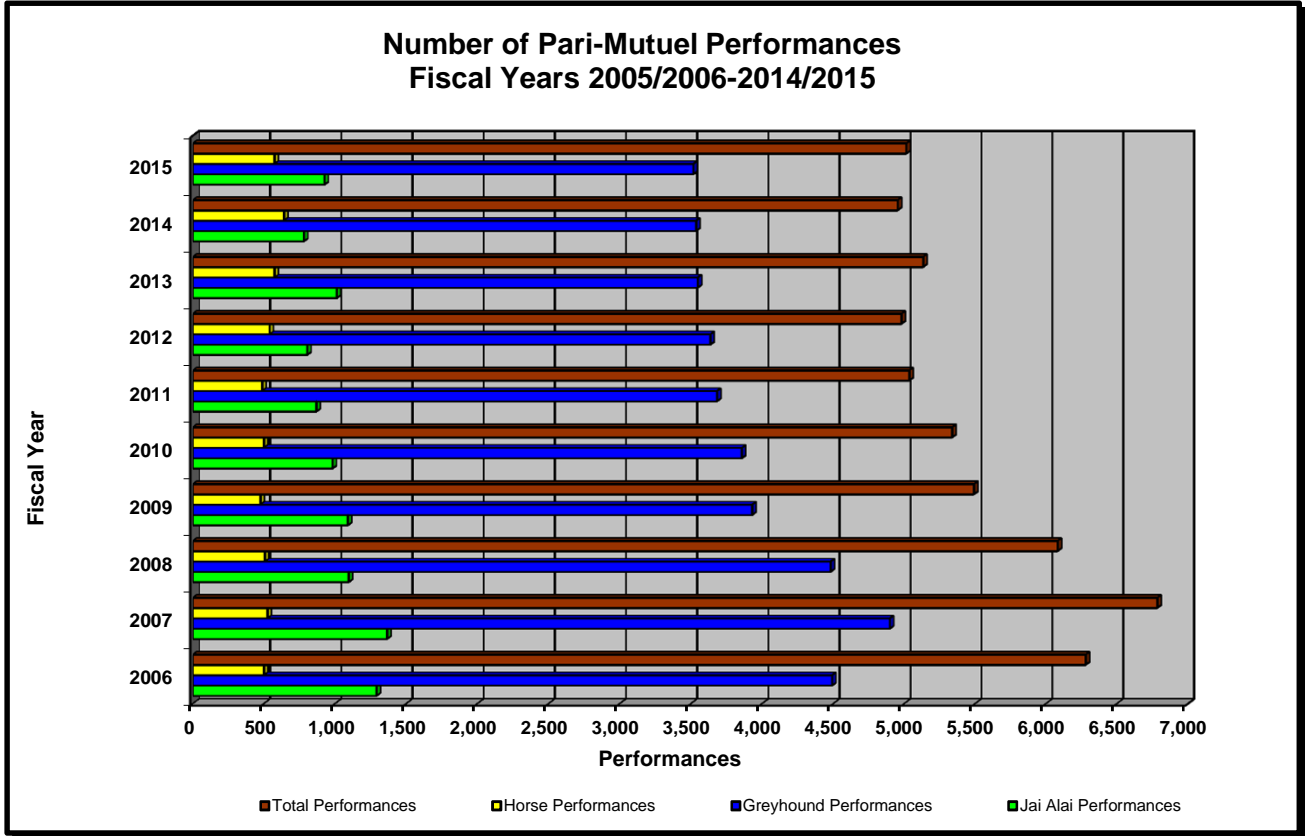
# HISTORICAL PARI-MUTUEL WAGERING ACTIVITY



# HISTORICAL PARI-MUTUEL WAGERING ACTIVITY



# HISTORICAL PARI-MUTUEL WAGERING ACTIVITY



## COMPONENTS OF PARI-MUTUEL HANDLE FROM PERFORMANCES

Fiscal Year 2014/2015

	Daily License Fee	Tax on Handle	Total Paid To Charities	Permitholder Revenues From Pari-Mutuel Handle	Public Pool	Total Handle
<b>Greyhound Racing Permitholders</b>						
Daytona Beach Kennel Club, Inc.	\$41,860	\$27,918	\$34,689	\$2,476,233	\$6,810,996	\$9,391,696
Derby Lane (St. Petersburg Kennel Club, Inc.)	120,000	466,058	131,202	4,802,255	17,654,017	23,173,532
Ebro Greyhound Park	19,127	13,555	1,638	479,170	1,091,489	1,604,979
Flagler Dog Track	116,160	462,594	65,415	3,796,114	15,426,402	19,866,685
H&T Gaming, Inc., d/b/a Mardi Gras Racetrack	39,786	214,765	37,140	2,356,433	9,155,873	11,803,997
Jacksonville Kennel Club, Inc.	16,800	9,975	91,786	2,552,628	8,582,510	11,253,699
License Acquisitions, LLC, d/b/a Palm Beach Greyhound Racing	36,000	80,036	68,758	3,062,175	10,464,529	13,711,498
Mardi Gras Racetrack and Gaming Center	16,020	22,329	43,629	1,784,986	6,407,023	8,273,987
Melbourne Greyhound Park, LLC	18,455	2,708	0	48,113	156,951	226,227
Naples-Ft. Myers Greyhound Track	104,320	226,005	47,039	3,648,257	13,420,355	17,445,976
Orange Park Kennel Club, Inc.	14,400	0	89,388	3,310,699	10,962,529	14,377,016
Palm Beach Kennel Club	154,240	625,301	105,299	8,828,679	35,547,082	45,260,601
Penn Sanford, LLC, d/b/a Sanford-Orlando Kennel Club	14,560	13,158	15,123	1,718,967	6,231,279	7,993,087
Pensacola Greyhound Racing, LLP	23,281	9,728	0	231,509	785,922	1,050,440
SOKC, LLC, d/b/a Sanford-Orlando Kennel Club	38,800	74,952	17,047	2,241,280	8,354,860	10,726,939
Sarasota Kennel Club, Inc.	16,880	14,029	33,965	1,789,458	5,713,340	7,567,672
St. Johns Greyhound Park	25,200	42,385	83,833	3,943,291	13,143,155	17,237,864
Tampa Greyhound Track	45,600	131,680	99,659	4,575,828	15,458,103	20,310,870
West Volusia Racing, Inc.	17,240	0	27,720	2,006,288	5,479,953	7,531,201
<b>Total Greyhound Permitholders</b>	<b>\$878,729</b>	<b>\$2,437,176</b>	<b>\$993,330</b>	<b>\$53,652,363</b>	<b>\$190,846,368</b>	<b>\$248,807,966</b>
<b>Jai Alai Permitholders</b>						
Dania Jai Alai	\$57,600	\$0	\$783	\$715,530	\$2,341,642	\$3,115,555
Dania Summer Jai Alai	41,040	0	767	660,115	2,122,697	2,824,619
Ft. Pierce Jai Alai	13,120	0	0	18,781	92,385	124,286
Hamilton Jai Alai and Poker <sup>(A)</sup>	72,960	0	0	(72,956)	14	18
Miami Jai Alai	73,440	0	6,427	1,220,032	3,713,589	5,013,488
Ocala Poker and Jai Alai	13,120	0	0	(13,111)	35	44
Orlando Jai Alai	13,760	0	0	(13,095)	43	708
Summer Jai Alai	62,400	0	7,152	987,624	3,020,351	4,077,527
<b>Total Jai Alai Permitholders</b>	<b>\$347,440</b>	<b>\$0</b>	<b>\$15,129</b>	<b>\$3,502,920</b>	<b>\$11,290,756</b>	<b>\$15,156,245</b>
<b>Thoroughbred Racing Permitholders</b>						
Calder Race Course, Inc. <sup>(B)</sup>	\$47,000	\$125,812	\$115,709	\$4,084,337	\$16,309,003	\$20,681,861
Gulfstream Park Thoroughbred After Racing Program, Inc.	42,600	130,616	130,398	4,289,825	17,464,900	22,058,339
Gulfstream Park Racing Association, Inc. <sup>(B)</sup>	297,200	4,072,917	196,831	60,234,881	245,531,985	310,333,814
Tampa Bay Downs, Inc.	265,600	1,203,805	72,514	18,999,172	77,534,717	98,075,808
Tropical Park, LLC. <sup>(B)</sup>	40,200	123,415	74,103	3,299,868	13,424,384	16,961,970
<b>Total Thoroughbred Permitholders</b>	<b>\$692,600</b>	<b>\$5,656,565</b>	<b>\$589,555</b>	<b>\$90,908,083</b>	<b>\$370,264,989</b>	<b>\$468,111,792</b>
<b>Harness Racing Permitholders</b>						
Isle Casino and Racing at Pompano Park	\$302,000	\$502,631	\$11,865	\$9,273,018	\$35,385,884	\$45,475,398
<b>Quarter Horse Racing Permitholders</b>						
Gretna Racing, LLC	\$30,400	\$508	\$0	(\$23,043)	\$42,951	\$50,816
Hamilton Downs Horsetrack, LLC	16,000	0	0	(\$15,999)	5	6
Ocala Breeders' Sales Company, Inc.	200	139	0	\$4,088	16,785	21,212
South Florida Racing Association, LLC (Hialeah Park)	33,900	19,316	0	\$296,156	1,362,091	1,711,463
South Marion Real Estate Holdings, LLC	16,000	12	0	(\$15,813)	1,039	1,238
<b>Total Quarter Horse Permitholders</b>	<b>\$96,500</b>	<b>\$19,975</b>	<b>\$0</b>	<b>\$245,389</b>	<b>\$1,422,871</b>	<b>\$1,784,735</b>
<b>TOTAL FOR ALL PERMITHOLDERS</b>	<b>\$2,317,269</b>	<b>\$8,616,347</b>	<b>\$1,609,879</b>	<b>\$157,581,773</b>	<b>\$609,210,868</b>	<b>\$779,336,136</b>

(A) Daily license fees and taxes were not collected. Permitholder relinquished jai alai permit.

(B) Daily license fees and taxes reported above are amounts due from performances held and do not equal amounts collected/paid.

**TOTAL STATE REVENUE FROM PERFORMANCES**

Fiscal Year 2014/2015	LIVE			SIMULCAST			ITW	ITW SIM	CHARITY PERFORMANCES	TOTAL TAXES AND FEES COLLECTED <sup>(A)</sup>
	Tax on Handle	Daily License Fee	Total Live Taxes and Fees Collected	Tax on Handle	Daily License Fee	Total Simulcast Taxes and Fees Collected	Tax on Handle	Tax on Handle	Daily License Fee	
<b>Greyhound Racing Permitholders</b>										
Daytona Beach Kennel Club, Inc.	\$11,979	\$18,480	\$30,459	\$3,808	\$6,500	\$10,308	\$12,131	\$0	\$16,880	\$69,778
Derby Lane (St. Petersburg Kennel Club, Inc.)	216,139	105,600	321,739	0	0	0	249,919	0	14,400	586,058
Ebro Greyhound Park	13,555	17,207	30,762	0	0	0	0	0	1,920	32,682
Flagler Dog Track	29,327	55,600	84,927	38,555	47,000	85,555	73,144	321,568	13,560	578,754
H&T Gaming, Inc., d/b/a Mardi Gras Racetrack	7,606	9,280	16,886	56,031	20,806	76,837	10,378	140,750	9,700	254,551
Jacksonville Kennel Club, Inc.	4,285	2,400	6,685	0	0	0	5,690	0	14,400	26,775
License Acquisitions, LLC, d/b/a Palm Beach Greyhound Racing	30,663	21,600	52,263	0	0	0	49,373	0	14,400	116,036
Mardi Gras Racetrack and Gaming Center	4,838	4,320	9,158	3,951	2,000	5,951	5,048	8,492	9,700	38,349
Melbourne Greyhound Park, LLC	2,708	18,455	21,163	0	0	0	0	0	0	21,163
Naples-Ft. Myers Greyhound Track	145,073	94,400	239,473	0	0	0	80,932	0	9,920	330,325
Orange Park Kennel Club, Inc.	0	0	0	0	0	0	0	0	14,400	14,400
Palm Beach Kennel Club	261,698	139,840	401,538	0	0	0	363,603	0	14,400	779,541
Penn Sanford, LLC, d/b/a Sanford-Orlando Kennel Club	7,895	7,200	15,095	0	0	0	5,263	0	7,360	27,718
Pensacola Greyhound Racing, LLP	9,728	23,281	33,009	0	0	0	0	0	0	33,009
SOKC, LLC, d/b/a Sanford-Orlando Kennel Club	42,941	31,600	74,541	0	0	0	32,011	0	7,200	113,752
Sarasota Kennel Club, Inc.	11,049	8,560	19,609	0	0	0	2,980	0	8,320	30,909
St. Johns Greyhound Park	17,897	10,800	28,697	0	0	0	24,488	0	14,400	67,585
Tampa Greyhound Track	65,803	31,200	97,003	0	0	0	65,877	0	14,400	177,280
West Volusia Racing, Inc.	0	0	0	0	0	0	0	0	17,240	17,240
<b>Total Greyhound Permitholders</b>	<b>\$883,184</b>	<b>\$599,823</b>	<b>\$1,483,007</b>	<b>\$102,345</b>	<b>\$76,306</b>	<b>\$178,651</b>	<b>\$980,837</b>	<b>\$470,810</b>	<b>\$202,600</b>	<b>\$3,315,905</b>
<b>Jai Alai Permitholders</b>										
Dania Jai Alai	\$0	\$56,960	\$56,960	\$0	\$0	\$0	\$0	\$0	\$640	\$57,600
Dania Summer Jai Alai	0	40,400	40,400	0	0	0	0	0	640	41,040
Ft. Pierce Jai Alai	0	12,800	12,800	0	0	0	0	0	320	13,120
Hamilton Jai Alai and Poker <sup>(B)</sup>	0	72,960	72,960	0	0	0	0	0	0	72,960
Miami Jai Alai	0	70,560	70,560	0	0	0	0	0	2,880	73,440
Ocala Poker and Jai Alai	0	13,120	13,120	0	0	0	0	0	0	13,120
Orlando Jai Alai	0	12,160	12,160	0	0	0	0	0	1,600	13,760
Summer Jai Alai	0	60,000	60,000	0	0	0	0	0	2,400	62,400
<b>Total Jai Alai Permitholders</b>	<b>\$0</b>	<b>\$338,960</b>	<b>\$338,960</b>	<b>\$0</b>	<b>\$0</b>	<b>\$0</b>	<b>\$0</b>	<b>\$0</b>	<b>\$8,480</b>	<b>\$347,440</b>
<b>Thoroughbred Racing Permitholders</b>										
Calder Race Course, Inc. <sup>(C)</sup>	\$18,897	\$40,000	\$58,897	\$3	\$1,000	\$1,003	\$106,855	\$57	\$6,000	\$172,812
Gulfstream Park Thoroughbred After Racing Program, Inc.	35,478	34,600	70,078	0	0	0	95,138	0	8,000	173,216
Gulfstream Park Racing Association, Inc. <sup>(C)</sup>	227,247	115,200	342,447	317,057	173,500	490,557	596,688	2,931,925	8,500	4,370,117
Tampa Bay Downs, Inc.	72,707	83,500	156,207	23,159	174,000	197,159	330,124	777,815	8,100	1,469,405
Tropical Park, LLC. <sup>(C)</sup>	28,567	32,800	61,367	0	0	0	94,848	0	7,400	163,615
<b>Total Thoroughbred Permitholders</b>	<b>\$382,896</b>	<b>\$306,100</b>	<b>\$688,996</b>	<b>\$340,219</b>	<b>\$348,500</b>	<b>\$688,719</b>	<b>\$1,223,653</b>	<b>\$3,709,797</b>	<b>\$38,000</b>	<b>\$6,349,165</b>
<b>Harness Racing Permitholders</b>										
Isle Casino and Racing at Pompano Park	\$16,888	\$115,600	\$132,488	\$60,933	\$179,000	\$239,933	\$49,710	\$375,100	\$7,400	\$804,631
<b>Quarter Horse Racing Permitholders</b>										
Gretna Racing, LLC	\$508	\$30,400	\$30,908	\$0	\$0	\$0	\$0	\$0	\$0	\$30,908
Hamilton Downs Horsetrack, LLC	0	16,000	16,000	0	0	0	0	0	0	16,000
Ocala Breeders' Sales Company, Inc.	139	200	339	0	0	0	0	0	0	339
South Florida Racing Association, LLC (Hialeah Park)	14,076	33,900	47,976	0	0	0	5,240	0	0	53,216
South Marion Real Estate Holdings, LLC	12	16,000	16,012	0	0	0	0	0	0	16,012
<b>Total Quarter Horse Permitholders</b>	<b>\$14,735</b>	<b>\$96,500</b>	<b>\$111,235</b>	<b>\$0</b>	<b>\$0</b>	<b>\$0</b>	<b>\$5,240</b>	<b>\$0</b>	<b>\$0</b>	<b>\$116,475</b>
<b>TOTAL FOR ALL PERMITHOLDERS</b>	<b>\$1,297,703</b>	<b>\$1,456,983</b>	<b>\$2,754,686</b>	<b>\$503,497</b>	<b>\$603,806</b>	<b>\$1,107,303</b>	<b>\$2,259,440</b>	<b>\$4,555,707</b>	<b>\$256,480</b>	<b>\$10,933,616</b>

(A) The amounts shown are taxes and fees collected after the application of any applicable tax credits, and do not include admissions tax.  
 (B) Daily license fees and taxes were not collected. Permitholder relinquished jai alai permit.  
 (C) Daily license fees and taxes reported above are amounts due from performances held and do not equal amounts collected/paid.

**TOTAL REGULAR AND CHARITY/SCHOLARSHIP HANDLE**

Fiscal Year 2014/2015	ON-TRACK		INTERTRACK		TOTAL REGULAR HANDLE	ON-TRACK		INTERTRACK		TOTAL CHARITY SCHOLARSHIP HANDLE	TOTAL HANDLE
	Live	Simulcast	ITW	ITWS		Live	Simulcast	ITW	ITWS		
<b>Greyhound Racing Permitholders</b>											
Daytona Beach Kennel Club, Inc.	\$3,523,371	\$868,918	\$4,427,490	\$0	\$8,819,779	\$297,699	\$42,626	\$231,592	\$0	\$571,917	\$9,391,696
Derby Lane (St. Petersburg Kennel Club, Inc.)	9,533,807	0	11,638,810	0	21,172,617	1,059,192	0	941,723	0	2,000,915	23,173,532
Ebro Greyhound Park	1,583,425	0	0	0	1,583,425	21,554	0	0	0	21,554	1,604,979
Flagler Dog Track	1,403,931	1,356,247	3,970,170	11,921,720	18,652,068	133,346	74,775	325,616	680,880	1,214,617	19,866,685
H&T Gaming, Inc., d/b/a Mardi Gras Racetrack	1,314,178	2,268,887	1,825,420	5,740,184	11,148,669	125,328	116,342	144,473	269,185	655,328	11,803,997
Jacksonville Kennel Club, Inc.	3,301,767	0	6,314,736	0	9,616,503	606,191	0	1,031,005	0	1,637,196	11,253,699
License Acquisitions, LLC, d/b/a Palm Beach Greyhound Racing	3,670,413	0	8,609,171	0	12,279,584	444,347	0	987,567	0	1,431,914	13,711,498
Mardi Gras Racetrack and Gaming Center	1,191,095	1,367,504	1,692,222	3,217,762	7,468,583	152,555	157,931	158,399	336,519	805,404	8,273,987
Melbourne Greyhound Park, LLC	226,227	0	0	0	226,227	0	0	0	0	0	226,227
Naples-Ft. Myers Greyhound Track	9,175,441	0	7,474,514	0	16,649,955	489,142	0	306,879	0	796,021	17,445,976
Orange Park Kennel Club, Inc.	4,494,472	0	8,341,268	0	12,835,740	658,105	0	883,171	0	1,541,276	14,377,016
Palm Beach Kennel Club	14,584,456	809	28,703,171	0	43,288,436	807,857	0	1,164,308	0	1,972,165	45,260,601
Penn Sanford, LLC, d/b/a Sanford-Orlando Kennel Club	3,700,210	0	4,006,735	0	7,706,945	121,092	0	165,050	0	286,142	7,993,087
Pensacola Greyhound Racing, LLP	1,050,440	0	0	0	1,050,440	0	0	0	0	0	1,050,440
SOKC, LLC, d/b/a Sanford-Orlando Kennel Club	5,373,679	0	5,043,177	0	10,416,856	138,849	0	171,234	0	310,083	10,726,939
Sarasota Kennel Club, Inc.	4,807,906	0	2,255,502	0	7,063,408	397,063	0	107,201	0	504,264	7,567,672
St. Johns Greyhound Park	5,569,600	0	10,211,580	0	15,781,180	603,425	0	853,259	0	1,456,684	17,237,864
Tampa Greyhound Track	7,914,731	0	10,838,847	0	18,753,578	705,749	0	851,543	0	1,557,292	20,310,870
West Volusia Racing, Inc.	2,510,139	1,001,830	3,551,843	0	7,063,812	208,727	67,637	191,025	0	467,389	7,531,201
<b>Total Greyhound Permitholders</b>	<b>\$84,929,288</b>	<b>\$6,864,195</b>	<b>\$118,904,656</b>	<b>\$20,879,666</b>	<b>\$231,577,805</b>	<b>\$6,970,221</b>	<b>\$459,311</b>	<b>\$8,514,045</b>	<b>\$1,286,584</b>	<b>\$17,230,161</b>	<b>\$248,807,966</b>
<b>Jai Alai Permitholders</b>											
Dania Jai Alai	\$571,897	\$0	\$2,508,977	\$0	\$3,080,874	\$6,959	\$0	\$27,722	\$0	\$34,681	\$3,115,555
Dania Summer Jai Alai	587,303	0	2,205,463	0	2,792,766	4,325	0	27,528	0	31,853	2,824,619
Ft. Pierce Jai Alai	122,082	0	0	0	122,082	2,204	0	0	0	2,204	124,286
Hamilton Jai Alai and Poker	18	0	0	0	18	0	0	0	0	0	18
Miami Jai Alai	2,123,034	0	2,650,181	0	4,773,215	132,045	0	108,228	0	240,273	5,013,488
Ocala Poker and Jai Alai	44	0	0	0	44	0	0	0	0	0	44
Orlando Jai Alai	530	0	0	0	530	178	0	0	0	178	708
Summer Jai Alai	1,634,190	0	2,213,369	0	3,847,559	108,949	0	121,019	0	229,968	4,077,527
<b>Total Jai Alai Permitholders</b>	<b>\$5,039,098</b>	<b>\$0</b>	<b>\$9,577,990</b>	<b>\$0</b>	<b>\$14,617,088</b>	<b>\$254,660</b>	<b>\$0</b>	<b>\$284,497</b>	<b>\$0</b>	<b>\$539,157</b>	<b>\$15,156,245</b>
<b>Thoroughbred Racing Permitholders</b>											
Calder Race Course, Inc.	\$3,779,406	\$643	\$7,653,369	\$3,388	\$11,436,806	\$542,358	\$586,922	\$1,230,769	\$6,885,006	\$9,245,055	\$20,681,861
Gulfstream Park Thoroughbred After Racing Program, Inc.	7,095,663	0	5,448,365	0	12,544,028	1,547,278	2,330,484	1,080,818	4,555,731	9,514,311	22,058,339
Gulfstream Park Racing Association, Inc.	45,449,497	63,411,323	34,882,808	147,246,936	290,990,564	9,304,122	2,587,158	4,009,765	3,442,205	19,343,250	310,333,814
Tampa Bay Downs, Inc.	18,334,591	4,631,854	22,749,018	45,949,688	91,665,151	2,079,980	215,739	2,133,899	1,981,039	6,410,657	98,075,808
Tropical Park, LLC.	5,713,383	0	5,377,935	0	11,091,318	1,542,846	1,138,461	1,252,356	1,936,989	5,870,652	16,961,970
<b>Total Thoroughbred Permitholders</b>	<b>\$80,372,540</b>	<b>\$68,043,820</b>	<b>\$76,111,495</b>	<b>\$193,200,012</b>	<b>\$417,727,867</b>	<b>\$15,016,584</b>	<b>\$6,858,764</b>	<b>\$9,707,607</b>	<b>\$18,800,970</b>	<b>\$50,383,925</b>	<b>\$468,111,792</b>
<b>Harness Racing Permitholders</b>											
Isle Casino and Racing at Pompano Park	\$3,377,614	\$12,186,640	\$1,654,272	\$27,270,383	\$44,488,909	\$175,674	\$204,682	\$108,546	\$497,587	\$986,489	\$45,475,398
<b>Quarter Horse Racing Permitholders</b>											
Gretna Racing, LLC	\$50,816	\$0	\$0	\$0	\$50,816	\$0	\$0	\$0	\$0	\$0	\$50,816
Hamilton Downs Horsetrack, LLC	6	0	0	0	6	0	0	0	0	0	6
Ocala Breeders' Sales Company, Inc.	21,212	0	0	0	21,212	0	0	0	0	0	21,212
South Florida Racing Association, LLC (Hialeah Park)	1,407,629	0	303,834	0	1,711,463	0	0	0	0	0	1,711,463
South Marion Real Estate Holdings, LLC	1,238	0	0	0	1,238	0	0	0	0	0	1,238
<b>Total Quarter Horse Permitholders</b>	<b>\$1,480,901</b>	<b>\$0</b>	<b>\$303,834</b>	<b>\$0</b>	<b>\$1,784,735</b>	<b>\$0</b>	<b>\$0</b>	<b>\$0</b>	<b>\$0</b>	<b>\$0</b>	<b>\$1,784,735</b>
<b>TOTAL FOR ALL PERMITHOLDERS</b>	<b>\$175,199,441</b>	<b>\$87,094,655</b>	<b>\$206,552,247</b>	<b>\$241,350,061</b>	<b>\$710,196,404</b>	<b>\$22,417,139</b>	<b>\$7,522,757</b>	<b>\$18,614,695</b>	<b>\$20,585,141</b>	<b>\$69,139,732</b>	<b>\$779,336,136</b>



**TOTAL INTERTRACK WAGERING HANDLE BY GUEST**

Fiscal Year 2014/2015

**HOST PERMITHOLDER**

GUEST PERMITHOLDER	DAYTONA	DERBY LANE	FLAGLER	H&T GAMING	JACKSONVILLE	LICENSE ACQUISITIONS	MARDI GRAS	NAPLES-Ft. MYERS	ORANGE PARK	PALM BEACH
<b>Greyhound Permitholders</b>										
Daytona Beach Kennel Club, Inc.	\$0	\$565,458	\$39,559	\$427,410	\$0	\$0	\$104,468	\$206,685	\$277,512	\$1,151,228
Derby Lane (St. Petersburg Kennel Club, Inc.)	400,403	0	1,264,104	734,615	539,353	1,001,528	607,941	629,560	647,548	2,849,276
Ebro Greyhound Park	0	477,061	0	0	120,937	224,118	0	0	235,451	680,012
Flagler Dog Track	151,770	523,863	0	963,972	289,348	735,708	675,977	1,065,094	387,667	1,879,977
H&T Gaming, Inc., d/b/a Mardi Gras Racetrack	401,713	613,199	4,774,145	0	360,241	639,971	0	546,941	452,471	1,395,239
Jacksonville Kennel Club, Inc.	358,833	765,165	1,719,031	1,141,912	954,413	612,233	737,600	486,962	1,190,813	1,951,322
License Acquisitions, LLC, d/b/a Palm Beach Greyhound Racing	0	0	173,584	0	615,703	0	0	0	5,943	0
Mardi Gras Racetrack and Gaming Center	166,597	176,181	0	0	0	0	0	261,184	0	524,811
Melbourne Greyhound Park, LLC	143,910	309,211	425,960	276,671	156,745	329,341	166,263	181,638	215,933	1,166,738
Naples-Ft. Myers Greyhound Track	127,563	463,029	876,748	373,230	137,187	418,511	213,848	0	172,869	1,245,367
Orange Park Kennel Club, Inc.	582,020	1,330,147	2,466,171	1,446,962	0	947,689	962,835	629,249	0	2,923,035
Palm Beach Kennel Club	383,702	974,646	89,373	168,222	0	0	173,650	638,791	757,417	0
Penn Sanford, LLC, d/b/a Sanford-Orlando Kennel Club	27,473	0	1,914,324	0	609,935	845,170	375,525	197,288	358,897	829,361
Pensacola Greyhound Racing, LLP	307,729	0	163,376	0	989,261	218,085	0	244,201	1,314,092	1,085,806
SOKC, LLC, d/b/a Sanford-Orlando Kennel Club	381,947	1,161,172	403,656	1,399,880	0	0	548,963	609,278	402,546	1,853,594
Sarasota Kennel Club, Inc.	169,028	1,095,005	947,929	518,427	331,449	638,994	303,878	301,445	316,793	1,735,277
Tampa Greyhound Track	327,772	2,272,374	299,586	200,196	500,562	783,090	202,989	667,209	623,047	2,372,865
West Volusia Racing, Inc.	0	0	213,735	0	483,096	446,746	32,249	42,607	261,731	386,957
<b>Total Greyhound Permitholders</b>	<b>\$3,930,460</b>	<b>\$10,726,511</b>	<b>\$15,771,281</b>	<b>\$7,651,497</b>	<b>\$6,088,230</b>	<b>\$7,841,184</b>	<b>\$5,106,186</b>	<b>\$6,708,132</b>	<b>\$7,620,730</b>	<b>\$24,030,865</b>
<b>Jai Alai Permitholders</b>										
Dania Jai Alai	\$0	\$0	\$22,129	\$0	\$0	\$0	\$673	\$0	\$3,379	\$5,198
Dania Summer Jai Alai	0	0	418,231	0	63,162	132,771	0	0	5,428	6,946
Ft. Pierce Jai Alai	124,646	219,015	131,580	81,696	150,940	344,760	57,705	234,438	159,800	1,089,127
Miami Jai Alai	0	0	0	0	0	0	0	0	0	0
Ocala Poker and Jai Alai	151,375	347,426	92,457	58,560	185,742	156,611	62,039	187,718	241,574	480,339
Orlando Jai Alai	0	0	0	0	0	0	0	0	0	0
Summer Jai Alai	0	0	0	0	0	0	0	0	0	0
<b>Total Jai Alai Permitholders</b>	<b>\$276,021</b>	<b>\$566,441</b>	<b>\$664,397</b>	<b>\$140,256</b>	<b>\$399,844</b>	<b>\$634,142</b>	<b>\$120,417</b>	<b>\$422,156</b>	<b>\$410,181</b>	<b>\$1,581,610</b>
<b>Thoroughbred Permitholders</b>										
Calder Race Course, Inc.	\$0	\$0	\$0	\$0	\$0	\$0	\$0	\$0	\$0	\$0
Gulfstream Park Racing Association, Inc.	0	0	0	0	0	0	0	0	0	0
Tampa Bay Downs, Inc.	0	1,125,416	0	0	174,740	252,125	0	0	231,926	1,037,492
<b>Total Thoroughbred Permitholders</b>	<b>\$0</b>	<b>\$1,125,416</b>	<b>\$0</b>	<b>\$0</b>	<b>\$174,740</b>	<b>\$252,125</b>	<b>\$0</b>	<b>\$0</b>	<b>\$231,926</b>	<b>\$1,037,492</b>
<b>Harness Permitholders</b>										
Isle Casino and Racing at Pompano Park	\$0	\$0	\$237,740	\$187,509	\$252,530	\$494,248	\$178,299	\$295,037	\$399,234	\$1,942,130
<b>Quarter Horse Permitholders</b>										
Gretna Racing, LLC	\$324,950	\$0	\$224,968	\$0	\$430,397	\$227,477	\$0	\$356,068	\$562,368	\$829,223
Hamilton Downs Horsetrack, LLC	0	0	0	0	0	0	0	0	0	0
Ocala Breeders' Sales Company Inc.	127,651	162,165	0	0	0	147,562	0	0	0	446,159
South Florida Racing Association, LLC (Hialeah Park)	0	0	0	0	0	0	0	0	0	0
<b>Total Quarter Horse Permitholders</b>	<b>\$452,601</b>	<b>\$162,165</b>	<b>\$224,968</b>	<b>\$0</b>	<b>\$430,397</b>	<b>\$375,039</b>	<b>\$0</b>	<b>\$356,068</b>	<b>\$562,368</b>	<b>\$1,275,382</b>
<b>TOTAL FOR ALL PERMITHOLDERS</b>	<b>\$4,659,082</b>	<b>\$12,580,533</b>	<b>\$16,898,386</b>	<b>\$7,979,262</b>	<b>\$7,345,741</b>	<b>\$9,596,738</b>	<b>\$5,404,902</b>	<b>\$7,781,393</b>	<b>\$9,224,439</b>	<b>\$29,867,479</b>

CONTINUED ON NEXT PAGE

Note: Figures above include handle from charity/scholarship performances.

**TOTAL INTERTRACK WAGERING HANDLE BY GUEST**

Fiscal Year 2014/2015

GUEST PERMITHOLDER	HOST PERMITHOLDER								
	Penn Sanford	SOKC, LLC	SARASOTA	ST. JOHNS	TAMPA GREYHOUND	WEST VOLUSIA RACING	DANIA	DANIA SUMMER	MIAMI
<b>Greyhound Permitholders</b>									
Daytona Beach Kennel Club, Inc.	\$18,870	\$257,246	\$116,307	\$591,617	\$48,726	\$0	\$16,797	\$0	\$135,979
Derby Lane (St. Petersburg Kennel Club, Inc.)	244,840	323,299	211,898	733,632	0	315,558	145,588	120,889	262,575
Ebro Greyhound Park	0	0	154,402	305,588	505,515	0	11,237	21,454	0
Flagler Dog Track	184,541	161,709	115,095	408,522	525,808	135,468	0	0	0
H&T Gaming, Inc., d/b/a Mardi Gras Racetrack	372,309	444,629	213,355	279,547	591,483	360,858	63,450	84,419	0
Jacksonville Kennel Club, Inc.	380,130	450,051	203,278	1,536,495	640,841	277,140	70,729	65,346	119,792
License Acquisitions, LLC, d/b/a Palm Beach Greyhound Racing	271,011	0	0	0	392,517	159,925	0	130,997	0
Mardi Gras Racetrack and Gaming Center	62,081	129,318	166,952	234,641	105,405	32,149	37,148	0	0
Melbourne Greyhound Park, LLC	148,544	193,925	93,457	262,838	249,891	107,382	185,619	164,531	391,831
Naples-Ft. Myers Greyhound Track	141,893	169,446	160,594	196,425	418,451	102,874	0	0	0
Orange Park Kennel Club, Inc.	555,341	638,718	265,721	0	1,391,013	424,735	63,635	69,014	129,251
Palm Beach Kennel Club	198,344	599,208	204,508	896,607	412,510	138,616	177,706	11,871	287,759
Penn Sanford, LLC, d/b/a Sanford-Orlando Kennel Club	0	0	0	161,508	1,046,276	347,597	0	0	0
Pensacola Greyhound Racing, LLP	228,664	382,523	118,421	1,504,719	0	290,896	27,110	22,780	17,476
SOKC, LLC, d/b/a Sanford-Orlando Kennel Club	0	0	0	738,955	0	0	0	0	0
Sarasota Kennel Club, Inc.	231,313	279,471	0	330,631	991,541	132,114	0	0	0
Tampa Greyhound Track	484,967	598,340	306,260	756,514	2,180,833	282,630	138,561	114,061	253,939
West Volusia Racing, Inc.	214,824	0	32,455	57,766	496,418	0	65,497	84,753	27,124
<b>Total Greyhound Permitholders</b>	<b>\$3,737,672</b>	<b>\$4,627,883</b>	<b>\$2,362,703</b>	<b>\$8,996,005</b>	<b>\$9,997,228</b>	<b>\$3,107,942</b>	<b>\$1,003,077</b>	<b>\$890,115</b>	<b>\$1,625,726</b>
<b>Jai Alai Permitholders</b>									
Dania Jai Alai	\$0	\$0	\$0	\$0	\$2,299	\$2,692	\$0	\$0	\$0
Dania Summer Jai Alai	0	0	0	0	29,804	49,090	0	0	0
Ft. Pierce Jai Alai	0	0	0	179,888	201,424	102,370	107,270	104,762	190,181
Miami Jai Alai	0	0	0	0	0	0	336,971	0	0
Ocala Poker and Jai Alai	133,089	155,744	0	276,687	307,065	120,440	94,506	87,624	162,237
Orlando Jai Alai	0	0	0	0	0	0	319,107	302,794	463,545
Summer Jai Alai	0	0	0	0	0	0	146,985	437,220	0
<b>Total Jai Alai Permitholders</b>	<b>\$133,089</b>	<b>\$155,744</b>	<b>\$0</b>	<b>\$456,575</b>	<b>\$540,592</b>	<b>\$274,592</b>	<b>\$1,004,839</b>	<b>\$932,400</b>	<b>\$815,963</b>
<b>Thoroughbred Permitholders</b>									
Calder Race Course, Inc.	\$0	\$0	\$0	\$0	\$0	\$0	\$0	\$0	\$0
Gulfstream Park Racing Association, Inc.	0	0	0	0	0	0	0	0	0
Tampa Bay Downs, Inc.	138,924	223,395	0	320,826	957,241	0	140,508	98,725	212,392
<b>Total Thoroughbred Permitholders</b>	<b>\$138,924</b>	<b>\$223,395</b>	<b>\$0</b>	<b>\$320,826</b>	<b>\$957,241</b>	<b>\$0</b>	<b>\$140,508</b>	<b>\$98,725</b>	<b>\$212,392</b>
<b>Harness Permitholders</b>									
Isle Casino and Racing at Pompano Park	\$0	\$0	\$0	\$531,898	\$0	\$0	\$291,606	\$228,569	\$0
<b>Quarter Horse Permitholders</b>									
Gretna Racing, LLC	\$162,100	\$207,389	\$0	\$759,525	\$0	\$268,608	\$50,389	\$40,675	\$30,238
Hamilton Downs Horsetrack, LLC	0	0	0	0	0	0	0	0	0
Ocala Breeders' Sales Company Inc.	0	0	0	10	195,329	91,726	46,280	42,507	74,090
South Florida Racing Association, LLC (Hialeah Park)	0	0	0	0	0	0	0	0	0
<b>Total Quarter Horse Permitholders</b>	<b>\$162,100</b>	<b>\$207,389</b>	<b>\$0</b>	<b>\$759,535</b>	<b>\$195,329</b>	<b>\$360,334</b>	<b>\$96,669</b>	<b>\$83,182</b>	<b>\$104,328</b>
<b>TOTAL FOR ALL PERMITHOLDERS</b>	<b>\$4,171,785</b>	<b>\$5,214,411</b>	<b>\$2,362,703</b>	<b>\$11,064,839</b>	<b>\$11,690,390</b>	<b>\$3,742,868</b>	<b>\$2,536,699</b>	<b>\$2,232,991</b>	<b>\$2,758,409</b>

CONTINUED FROM PREVIOUS PAGE

CONTINUED ON NEXT PAGE

Note: Figures above include handle from charity/scholarship performances.

**TOTAL INTERTRACK WAGERING HANDLE BY GUEST**

Fiscal Year 2014/2015

GUEST PERMITHOLDER	HOST PERMITHOLDER								TOTAL
	SUMMER	CALDER	GULFSTREAM PARK	GULFSTREAM PARK AFTER RACING PROGRAM	TAMPA BAY DOWNS	TROPICAL PARK	POMPANO PARK	HIALEAH PARK	
<b>Greyhound Permitholders</b>									
Daytona Beach Kennel Club, Inc.	\$53,007	\$0	\$4,394,280	\$0	\$1,476,441	\$117,487	\$1,138,029	\$22,035	\$11,159,141
Derby Lane (St. Petersburg Kennel Club, Inc.)	213,225	497,213	8,857,607	542,476	4,133,961	366,551	1,959,757	26,435	27,629,832
Ebro Greyhound Park	0	116,480	1,562,818	161,288	260,802	114,923	0	0	4,952,086
Flagler Dog Track	0	287,071	3,156,089	272,859	670,865	263,766	1,122,245	0	13,977,414
H&T Gaming, Inc., d/b/a Mardi Gras Racetrack	0	210,101	4,032,179	172,283	1,484,388	219,831	2,236,984	0	19,949,736
Jacksonville Kennel Club, Inc.	95,467	267,101	4,863,232	293,128	2,176,257	221,594	1,215,372	0	22,794,237
License Acquisitions, LLC, d/b/a Palm Beach Greyhound Racing	87,410	0	6,310,814	1,851,847	1,227,106	367,368	1,079,858	0	12,674,083
Mardi Gras Racetrack and Gaming Center	0	0	955,126	0	468,294	0	654,418	0	3,974,305
Melbourne Greyhound Park, LLC	315,963	440,792	8,386,263	459,438	2,668,101	428,725	946,785	32,164	18,848,659
Naples-Ft. Myers Greyhound Track	0	864,344	14,200,067	569,074	4,613,599	449,181	1,532,461	0	27,446,761
Orange Park Kennel Club, Inc.	101,784	360,156	5,454,909	388,232	2,387,482	274,760	157,891	0	23,950,750
Palm Beach Kennel Club	149,648	1,692,796	24,376,464	0	7,830,831	907,585	3,970,398	0	45,040,652
Penn Sanford, LLC, d/b/a Sanford-Orlando Kennel Club	0	532,327	3,566,240	530,629	1,551,508	207,266	766,171	0	13,867,495
Pensacola Greyhound Racing, LLP	17,607	220,622	880,090	172,838	316,696	194,588	0	0	8,717,580
SOKC, LLC, d/b/a Sanford-Orlando Kennel Club	0	0	5,944,433	0	2,394,218	232,342	980,184	0	17,051,168
Sarasota Kennel Club, Inc.	0	485,502	8,684,536	505,658	2,842,415	373,288	991,954	0	22,206,648
Tampa Greyhound Track	212,998	345,399	6,640,469	398,407	3,164,914	313,614	1,697,987	29,343	26,168,926
West Volusia Racing, Inc.	66,977	356,109	2,511,429	356,010	689,451	126,603	877,406	0	7,829,943
<b>Total Greyhound Permitholders</b>	<b>\$1,314,086</b>	<b>\$6,676,013</b>	<b>\$114,777,045</b>	<b>\$6,674,167</b>	<b>\$40,357,329</b>	<b>\$5,179,472</b>	<b>\$21,327,900</b>	<b>\$109,977</b>	<b>\$328,239,416</b>
<b>Jai Alai Permitholders</b>									
Dania Jai Alai	\$7,816	\$1,073	\$29,419	\$0	\$3,923	\$0	\$10,231	\$0	\$88,832
Dania Summer Jai Alai	124,090	0	161,662	42,577	89,633	18,742	233,220	0	1,375,356
Ft. Pierce Jai Alai	157,060	270,013	4,432,026	273,167	1,516,075	207,588	0	0	10,335,531
Miami Jai Alai	0	0	0	0	0	0	0	0	336,971
Ocala Poker and Jai Alai	131,081	95,278	1,614,932	106,956	595,813	87,669	268,246	0	6,201,208
Orlando Jai Alai	373,221	418,079	7,584,218	444,757	2,452,702	385,292	1,969,600	0	14,713,315
Summer Jai Alai	0	0	0	0	0	0	0	0	584,205
<b>Total Jai Alai Permitholders</b>	<b>\$793,268</b>	<b>\$784,443</b>	<b>\$13,822,257</b>	<b>\$867,457</b>	<b>\$4,658,146</b>	<b>\$699,291</b>	<b>\$2,481,297</b>	<b>\$0</b>	<b>\$33,635,418</b>
<b>Thoroughbred Permitholders</b>									
Calder Race Course, Inc.	\$0	\$0	\$3,217,039	\$0	\$415,881	\$0	\$2,455	\$0	\$3,635,375
Gulfstream Park Racing Association, Inc.	0	5,206,534	0	0	18,093,894	0	3,451,638	92,216	26,844,282
Tampa Bay Downs, Inc.	157,904	1,066,035	21,198,004	1,068,777	0	782,536	1,780,453	0	30,967,419
<b>Total Thoroughbred Permitholders</b>	<b>\$157,904</b>	<b>\$6,272,569</b>	<b>\$24,415,043</b>	<b>\$1,068,777</b>	<b>\$18,509,775</b>	<b>\$782,536</b>	<b>\$5,234,546</b>	<b>\$92,216</b>	<b>\$61,447,076</b>
<b>Harness Permitholders</b>									
Isle Casino and Racing at Pompano Park	\$0	\$934,500	\$17,934,679	\$1,096,365	\$3,441,041	\$838,251	\$0	\$90,950	\$29,374,586
<b>Quarter Horse Permitholders</b>									
Gretna Racing, LLC	\$13,917	\$67,841	\$1,235,162	\$84,246	\$540,350	\$66,398	\$0	\$10,691	\$6,492,980
Hamilton Downs Horsetrack, LLC	0	0	0	0	3,966	0	0	0	3,966
Ocala Breeders' Sales Company Inc.	55,213	534,643	8,185,796	613,595	2,840,424	502,564	338,935	0	14,404,649
South Florida Racing Association, LLC (Hialeah Park)	0	502,523	9,211,732	680,307	2,462,613	498,768	148,110	0	13,504,053
<b>Total Quarter Horse Permitholders</b>	<b>\$69,130</b>	<b>\$1,105,007</b>	<b>\$18,632,690</b>	<b>\$1,378,148</b>	<b>\$5,847,353</b>	<b>\$1,067,730</b>	<b>\$487,045</b>	<b>\$10,691</b>	<b>\$34,405,648</b>
<b>TOTAL FOR ALL PERMITHOLDERS</b>	<b>\$2,334,388</b>	<b>\$15,772,532</b>	<b>\$189,581,714</b>	<b>\$11,084,914</b>	<b>\$72,813,644</b>	<b>\$8,567,280</b>	<b>\$29,530,788</b>	<b>\$303,834</b>	<b>\$487,102,144</b>

Note: Figures above include handle from charity/scholarship performances.

## CHARITY AND SCHOLARSHIP PERFORMANCES

Each permitholder may operate up to five additional days designated as charity or scholarship days during their regular meet. Proceeds from these additional days are paid to approved charities, major state and private institutions of higher learning, community colleges, the Historical Resources Operating Trust Fund, and the Racing Scholarship Trust Fund (Board of Governors' Operations and Maintenance Trust Fund). A list of proposed recipients is submitted annually by the permitholder to the division. Typically, the amount contributed to charitable organizations is determined by calculating the amount of taxes due to the state had it been a regular performance. A minimum of \$1,618,467 was paid to charitable organizations during Fiscal Year 2014/2015, bringing the total proceeds disbursed since 1985 to \$78,134,281.

## RACING SCHOLARSHIP TRUST FUND

The Board of Governors, within the Department of Education, oversees the Board of Governors' Operations and Maintenance Trust Fund and ensures that the referenced contributions are used to provide scholarships to deserving students attending Florida's colleges and universities. A total of \$16,885,110 has been paid to this fund since the program began in 1949.

## ABANDONED WINNING TICKETS

Abandoned pari-mutuel tickets are winning tickets that remain uncashed for a period of one year. The value of greyhound and jai alai abandoned tickets for live on-track races or games escheat to the state. These funds are deposited into the Department of Education's State School Trust Fund for the support and maintenance of Florida's public schools. Since 1957, the total paid into this fund is \$95,578,484. The amount collected from abandoned winning tickets for the State School Trust Fund for this fiscal year is detailed below.

<b>Abandoned Winning Tickets</b>	
Greyhound Permitholders	\$744,478
Jai Alai Permitholders	50,750
<b>Total For 2014/2015 Fiscal Year</b>	<b>\$795,228</b>

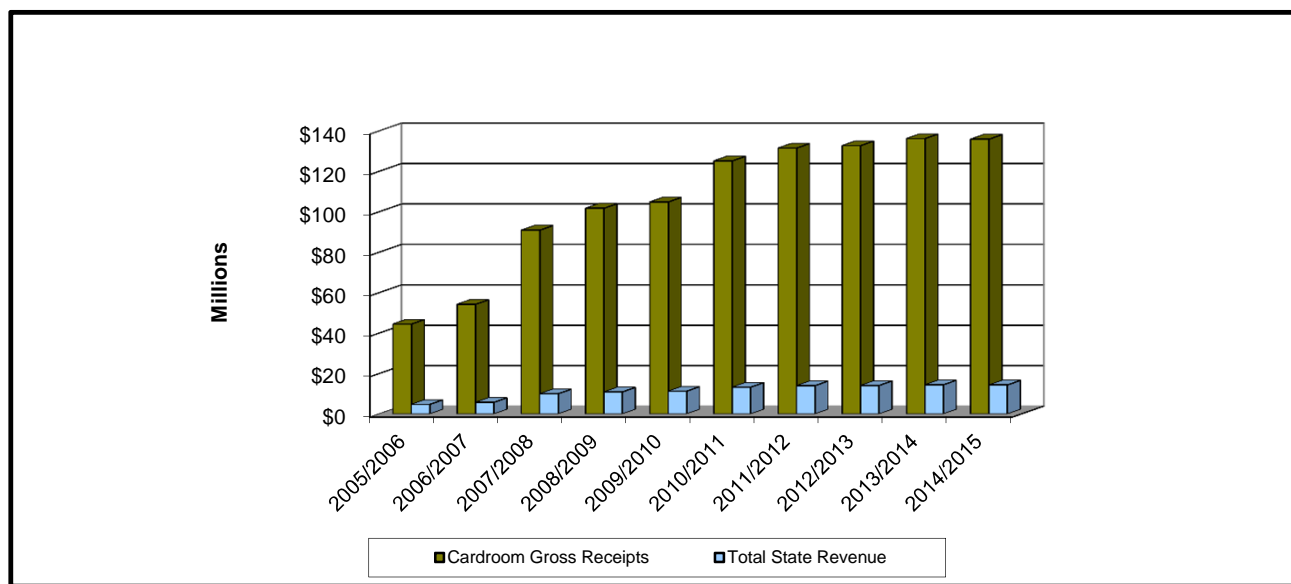
In harness and quarter horse racing, abandoned winning tickets are paid to the respective breeders' associations. Abandoned winning tickets from thoroughbred horse racing are retained by the permitholder.

## CARDROOM COMPARATIVE DATA

During Fiscal Year 2014/2015, there were 25 permitholders that obtained a cardroom license. Two did not operate, the other 23 operated at 23 pari-mutuel facilities located throughout the state. The number of cardroom tables decreased from 788 in Fiscal Year 2013/2014, to 755 in Fiscal Year 2014/2015. Cardroom gross receipts decreased from \$136,163,616 to \$135,888,902 and the gross receipts tax decreased from \$13,615,464 to \$13,589,789 this fiscal year. Table fees decreased from \$788,000 to \$755,000 this fiscal year. The overall result was a decrease in total state revenue from \$14,403,464 to \$14,344,789 this fiscal year.

Cardroom tax revenue is distributed 50 percent between the Pari-Mutuel Wagering Trust Fund and the General Revenue Fund. In accordance with Section 849.086(13)(h), Florida Statutes, one quarter of the moneys deposited into the Pari-Mutuel Wagering Trust Fund must be distributed to counties and municipalities that approved the cardroom. In October 2015, the division distributed approximately \$1,698,723 to the counties/municipalities from cardroom gross receipts.

### CARDROOM GROSS RECEIPTS AND TOTAL STATE REVENUE FISCAL YEARS 2005/2006 THROUGH 2014/2015



### CARDROOM GROSS RECEIPTS AND STATE REVENUE SUMMARY

Fiscal Year	Total Cardroom Gross Receipts	Gross Receipts Tax	Table Fees Collected <sup>(A)</sup>	Total State Revenue (Gross Receipts Tax plus Table Fees)	Total State Revenue as a Percent of Gross Receipts
2005/2006	\$44,433,359	\$4,443,337	\$264,000	\$4,707,337	10.59%
2006/2007	\$54,208,544	\$5,420,855	\$325,500	\$5,746,355	10.60%
2007/2008	\$90,863,855	\$9,086,385	\$875,000	\$9,961,385	10.96%
2008/2009	\$101,700,243	\$10,170,024	\$698,000	\$10,868,024	10.69%
2009/2010	\$104,799,448	\$10,479,945	\$749,000	\$11,228,945	10.71%
2010/2011	\$125,141,080	\$12,514,108	\$718,000	\$13,232,108	10.57%
2011/2012	\$131,447,663	\$13,144,767	\$834,000	\$13,978,767	10.63%
2012/2013	\$132,690,415	\$13,269,045	\$810,000	\$14,079,045	10.61%
2013/2014	\$136,163,616	\$13,615,464	\$788,000	\$14,403,464	10.58%
2014/2015	\$135,888,902	\$13,589,789 <sup>(B)</sup>	\$755,000	\$14,344,789	10.56%

(A) Amount agrees with the number of approved cardroom tables per annual cardroom licenses, and reflects the number of tables in operation each fiscal year.

(B) Includes additional payment of \$897.50 for October 2013, received in August 2014, due to revised monthly report.

## COMPONENTS OF CARDROOM REVENUE BY ASSOCIATION

Fiscal Year 2014/2015	County / Municipality	Gross Receipts	Tournament Gross Receipts	Total Gross Receipts	Gross Receipts Tax <sup>(A)</sup>	Table Fees Collected <sup>(B)</sup>	Total Taxes and Fees
<b>Greyhound Racing Permitholders</b>							
Daytona Beach Kennel Club, Inc./West Volusia Racing, Inc.	Volusia	\$10,260,442	\$805,384	\$11,065,826	\$1,106,583	\$55,000	\$1,161,583
Derby Lane (St. Petersburg Kennel Club, Inc.)	Pinellas	7,766,643	809,669	8,576,312	857,631	45,000	902,631
Ebro Greyhound Park	Washington	2,728,129	326,879	3,055,008	305,500	20,000	325,500
Flagler Dog Track	Dade	6,912,438	27,325	6,939,763	694,874 <sup>(C)</sup>	23,000	717,874
Jacksonville Kennel Club, Inc.	Duval	14,725,776	939,280	15,665,056	1,566,506	71,000	1,637,506
Mardi Gras Racetrack and Gaming Center/H & T Gaming, Inc.	Hallandale	5,654,584	282,119	5,936,703	593,670	30,000	623,670
Melbourne Greyhound Park, LLC	Brevard	4,223,440	136,195	4,359,635	435,963	34,000	469,963
Naples-Ft. Myers Greyhound Track	Lee	6,405,597	505,015	6,910,612	691,063	32,000	723,063
Orange Park Kennel Club, Inc.	Town of Orange Park	7,439,673	66,615	7,506,288	750,629	39,000	789,629
Palm Beach Kennel Club/License Acquisitions, LLC	Palm Beach	11,544,820	1,065,075	12,609,895	1,260,990	75,000	1,335,990
Pensacola Greyhound Racing, LLP	Escambia	3,153,303	616,385	3,769,688	376,969	20,000	396,969
Sarasota Kennel Club, Inc.	Sarasota	4,894,259	772,380	5,666,639	566,664	35,000	601,664
St. Johns Greyhound Park <sup>(D)</sup>	St. Johns	0	0	0	0	1,000	1,000
Tampa Greyhound Track	Hillsborough	2,040,726	74,567	2,115,293	211,529	1,000	212,529
<b>Total Greyhound Permitholders</b>		<b>\$87,749,830</b>	<b>\$6,426,888</b>	<b>\$94,176,718</b>	<b>\$9,418,571</b>	<b>\$481,000</b>	<b>\$9,899,571</b>
<b>Jai Alai Permitholders</b>							
Dania Jai Alai/Summersport Enterprises, LLC	Hallandale	\$5,976	\$84,872	\$90,848	\$9,085	\$1,000	\$10,085
Ft. Pierce Jai Alai	St. Lucie	2,353,923	152,587	2,506,510	250,651	25,000	275,651
Hamilton Jai Alai and Poker	Hamilton	411,259	165	411,424	41,142	3,000	44,142
Miami/Summer Jai Alai	Dade	2,285,247	54,267	2,339,514	233,951	16,000	249,951
Ocala Poker and Jai Alai	Marion	3,316,536	172,445	3,488,981	348,898	21,000	369,898
<b>Total Jai Alai Permitholders</b>		<b>\$8,372,941</b>	<b>\$464,336</b>	<b>\$8,837,277</b>	<b>\$883,727</b>	<b>\$66,000</b>	<b>\$949,727</b>
<b>Thoroughbred Racing Permitholders</b>							
Gulfstream Park Racing Association, Inc.	Broward	5,374,421	142,163	5,516,584	551,658	21,000	572,658
Tampa Bay Downs, Inc.	Hillsborough	3,514,313	743,283	\$4,257,596	425,760	23,000	448,760
<b>Total Thoroughbred Permitholders</b>		<b>\$8,888,734</b>	<b>\$885,446</b>	<b>\$9,774,180</b>	<b>\$977,418</b>	<b>\$44,000</b>	<b>\$1,021,418</b>
<b>Harness Racing Permitholders</b>							
Isle Casino and Racing at Pompano Park	Broward	\$11,234,738	\$1,660,226	\$12,894,964	\$1,289,496	\$45,000	\$1,334,496
<b>Quarter Horse Racing Permitholders</b>							
Gretna Racing, LLC	Gadsden	\$1,649,021	\$197,375	\$1,846,396	\$184,640	\$15,000	\$199,640
South Florida Racing Association, LLC (Hialeah Park)	City of Hialeah	7,695,032	664,335	\$8,359,367	835,937	44,000	879,937
<b>Total Quarter Horse Permitholders</b>		<b>\$9,344,053</b>	<b>\$861,710</b>	<b>\$10,205,763</b>	<b>\$1,020,577</b>	<b>\$59,000</b>	<b>\$1,079,577</b>
<b>TOTAL FOR ALL PERMITHOLDERS</b>		<b>\$125,590,296</b>	<b>\$10,298,606</b>	<b>\$135,888,902</b>	<b>\$13,589,789</b>	<b>\$695,000</b>	<b>\$14,284,789</b>

(A) 1/8th of total gross receipts tax is distributed to counties or municipalities by October 1, of the following year.

(B) Amounts shown are table fees collected during fiscal year 2014/2015.

(C) Includes additional payment of \$ 897.50 for October 2013, received in August 2014, due to revised monthly report.

(D) Permitholder paid table fees and received cardroom license for 2014/2015, but did not conduct cardroom operations during 2014/2015.

## SLOT COMPARATIVE DATA

During Fiscal Year 2014/2015, the total amount wagered by patrons was \$7,979,515,007. Average daily revenue per slot machine was \$188. Total net slot revenue was \$521,670,975. As a result the total taxes paid to the state was \$182,584,841, an increase of five percent in total paid slot taxes from the previous fiscal year. A total of \$15,750,000 was collected in annual fees, including the Compulsive or Addictive Gambling Prevention Program Fee, per Section 551.118(3), Florida Statutes. For further details, see the Summary of State Revenue From Pari-Mutuel, Cardroom, Slot Activity, and Indian Gaming Compact (page 36) of this report. On October 12, 2014, Dania Jai-Alai closed the slot portion of the facility due to remodeling.

HISTORICAL SLOT FACILITY ACTIVITY		
Fiscal Year	Total Amount Wagered	Total State Revenue
2006/2007	\$1,114,108,466	\$49,620,582
2007/2008	\$3,023,981,126	\$120,560,317
2008/2009	\$2,701,341,778	\$103,895,351
2009/2010	\$3,840,468,455	\$138,125,105
2010/2011	\$5,054,297,731	\$125,063,886
2011/2012	\$6,045,432,393	\$143,962,346
2012/2013	\$6,690,513,855	\$152,532,223
2013/2014	\$7,953,652,039	\$174,024,068
2014/2015	\$7,979,515,007	\$182,584,841

FISCAL YEAR 2014/2015									
	Gulfstream Operations Began 11/15/2006	Mardi Gras Operations Began 12/28/2006	Pompano Park Operations Began 4/14/2007	West Flagler Operations Began 10/15/2009	Calder Operations Began 1/22/2010	Miami Jai Alai Operations Began 1/23/2012	Hialeah Park Operations Began 8/14/2013	Dania Jai Alai <sup>(2)</sup> Operations Began 2/20/2014	TOTAL
<b>Average Number of Machines</b>	847	965	1,456	801	1,113	1,029	850	522	7,583
<b>Number of Operating Days</b>	365	365	365	365	365	365	365	104	365
<b>Average Daily Revenue per Machine</b>	\$159	\$136	\$274	\$276	\$182	\$153	\$207	\$54	\$188
<b>Amount Wagered</b>	\$794,329,039	\$701,055,610	\$2,005,415,129	\$1,358,574,237	\$981,098,699	\$1,038,431,327	\$1,045,072,386	\$55,538,580	\$7,979,515,007
<b>Amount Won By Patrons</b>	\$734,280,878	\$644,290,707	\$1,836,310,191	\$1,275,489,711	\$891,381,301	\$970,450,887	\$974,876,557	\$51,446,310	\$7,378,526,542
<b>Promotional Credits</b>	\$11,040,693	\$8,819,486	\$23,693,184	\$2,408,311	\$16,024,799	\$10,662,818	\$6,084,879	\$1,173,239	\$79,907,409
<b>30-Day Unclaimed Tickets</b>	\$96,186	\$36,565	\$198,873	\$39,305	\$37,224	\$108,049	\$36,100	\$2,999	\$555,301
<b>Net Slot Machine Revenue</b>	<b>\$49,103,653</b>	<b>\$47,986,792</b>	<b>\$145,610,627</b>	<b>\$80,720,091</b>	<b>\$73,755,061</b>	<b>\$57,425,670</b>	<b>\$64,147,050</b>	<b>\$2,922,031</b>	<b>\$521,670,975</b>
<b>State Tax Revenue <sup>(1)</sup></b>	<b>\$17,186,279</b>	<b>\$16,795,377</b>	<b>\$50,963,719</b>	<b>\$28,252,032</b>	<b>\$25,814,271</b>	<b>\$20,098,984</b>	<b>\$22,451,468</b>	<b>\$1,022,711</b>	<b>\$182,584,841</b>
<b>Permitholder Revenue</b>	<b>\$31,917,374</b>	<b>\$31,191,415</b>	<b>\$94,646,908</b>	<b>\$52,468,059</b>	<b>\$47,940,790</b>	<b>\$37,326,686</b>	<b>\$41,695,582</b>	<b>\$1,899,320</b>	<b>\$339,086,134</b>
<b>Total State Revenue as a Percent of Amount Wagered</b>	<b>2.16%</b>	<b>2.40%</b>	<b>2.54%</b>	<b>2.08%</b>	<b>2.63%</b>	<b>1.94%</b>	<b>2.15%</b>	<b>1.84%</b>	<b>2.29%</b>

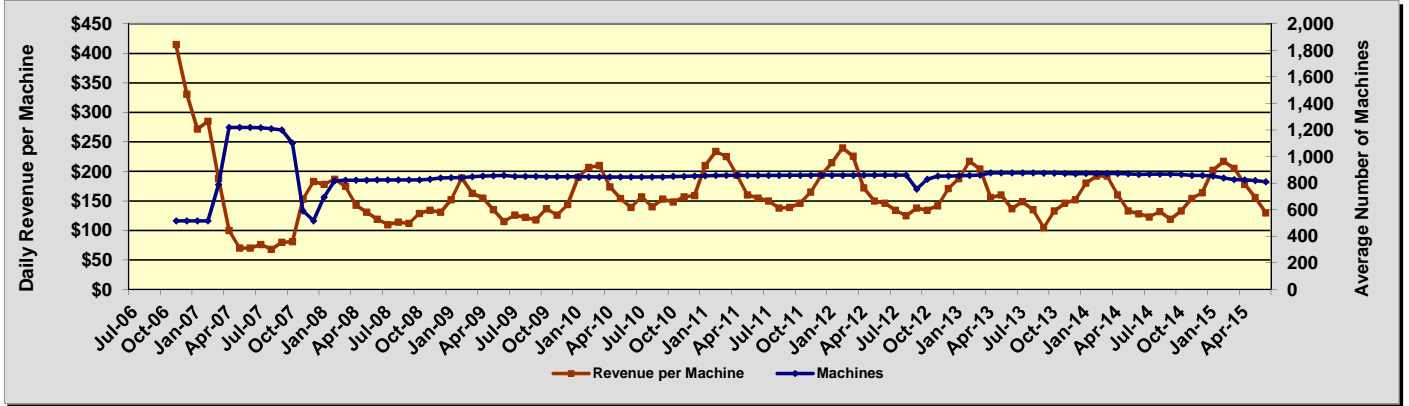
Note: Changes to figures for Fiscal Year 2011/2012 and 2012/2013 are due to refunds to Miami Jai Alai for overpayment of slot taxes.

(1) <sup>(1)</sup> Taxes paid on net slot machine revenue were accounted for by the division, then immediately transferred to the Department of Education's Educational Enhancement Trust Fund.

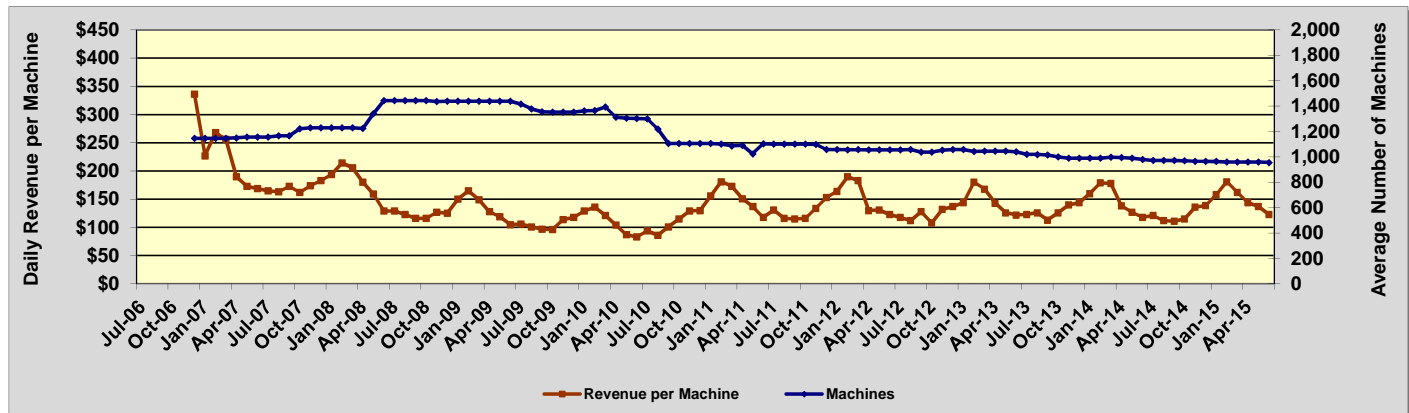
(2) Dania's Casino was open February 20, 2014, through October 12, 2014.

# Daily Revenue per Machine Compared to Average Number of Machines For Fiscal Years 2006/2007 - 2014/2015

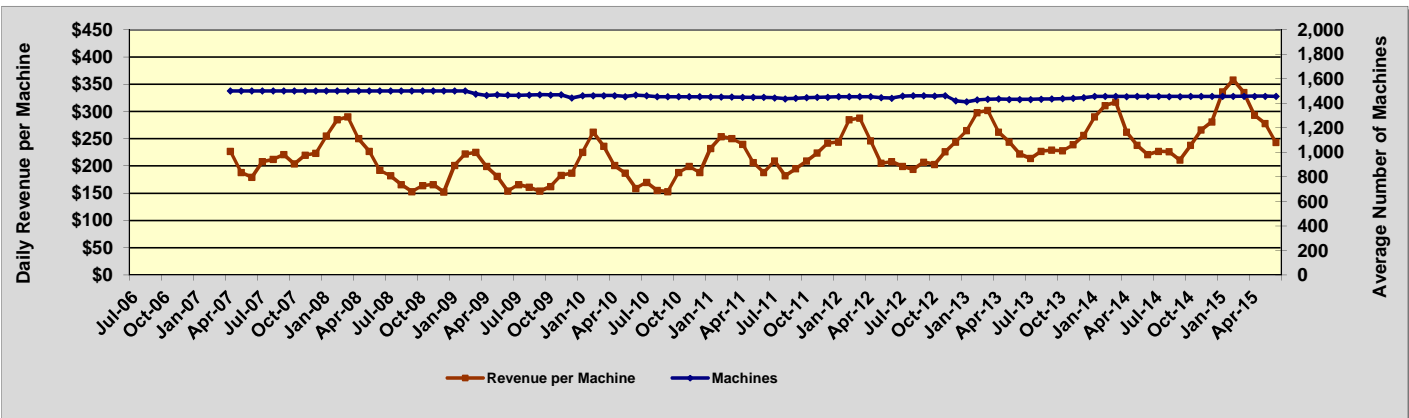
## GULFSTREAM PARK RACING AND CASINO



## MARDI GRAS RACETRACK AND GAMING CENTER



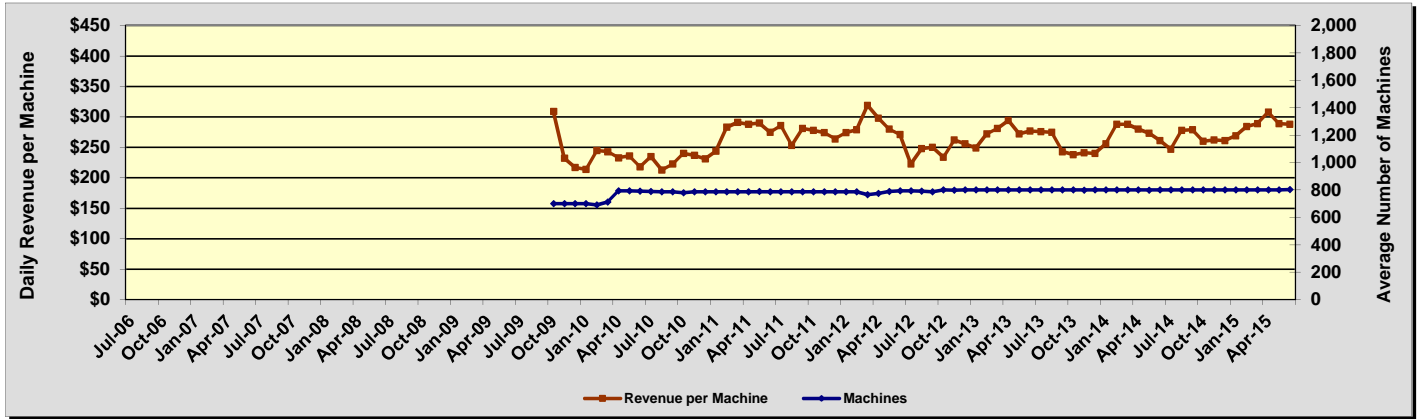
## ISLE CASINO AND RACING AT POMPANO PARK



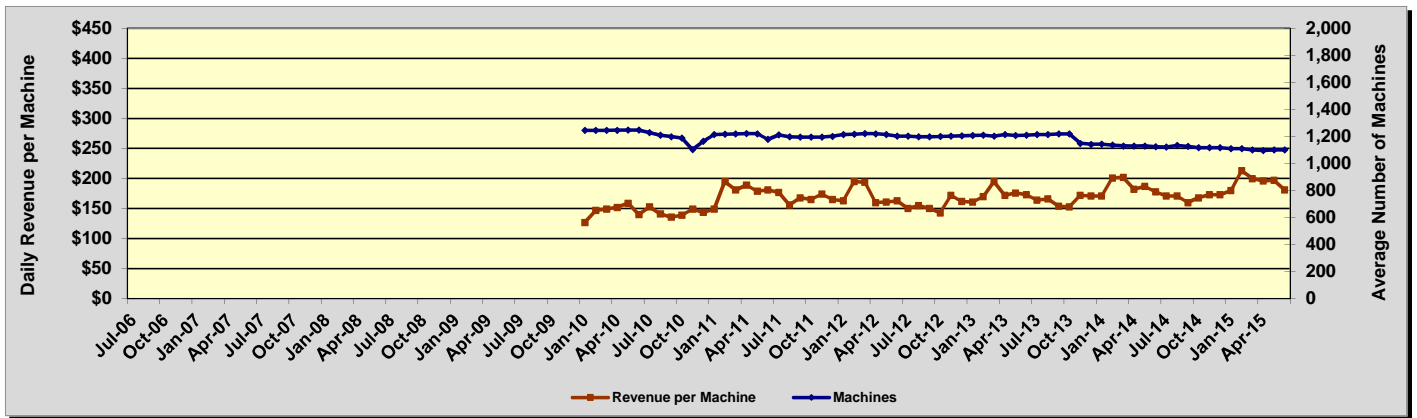


# Daily Revenue per Machine Compared to Average Number of Machines For Fiscal Years 2006/2007 - 2014/2015

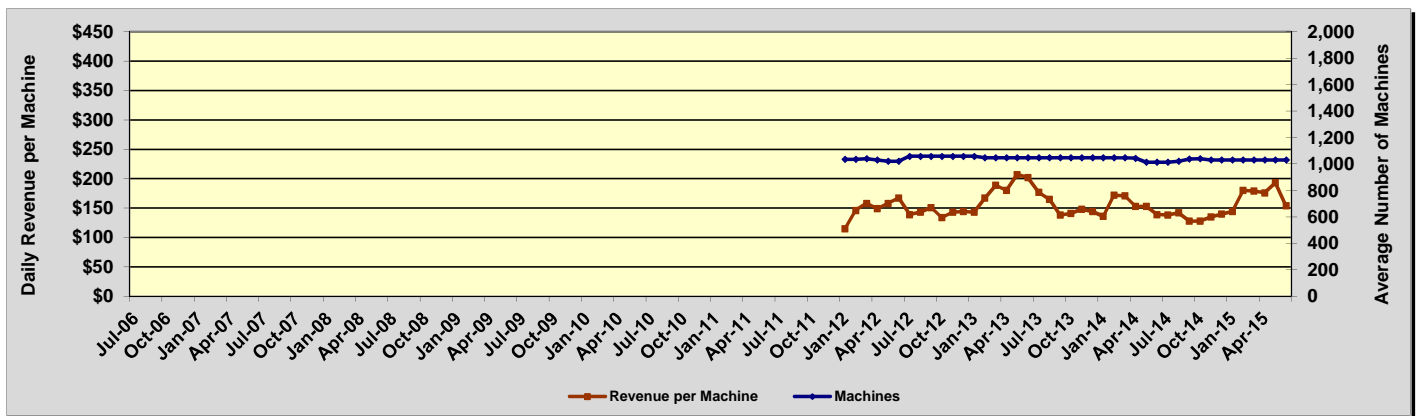
## FLAGLER DOG TRACK AND MAGIC CITY CASINO



## CALDER CASINO AND RACE COURSE

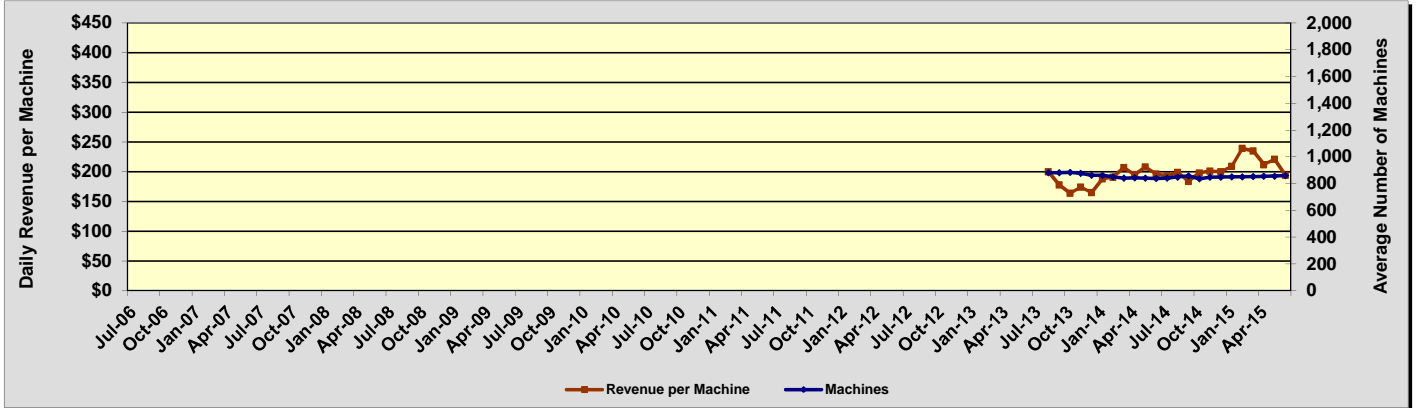


## MIAMI JAI ALAI

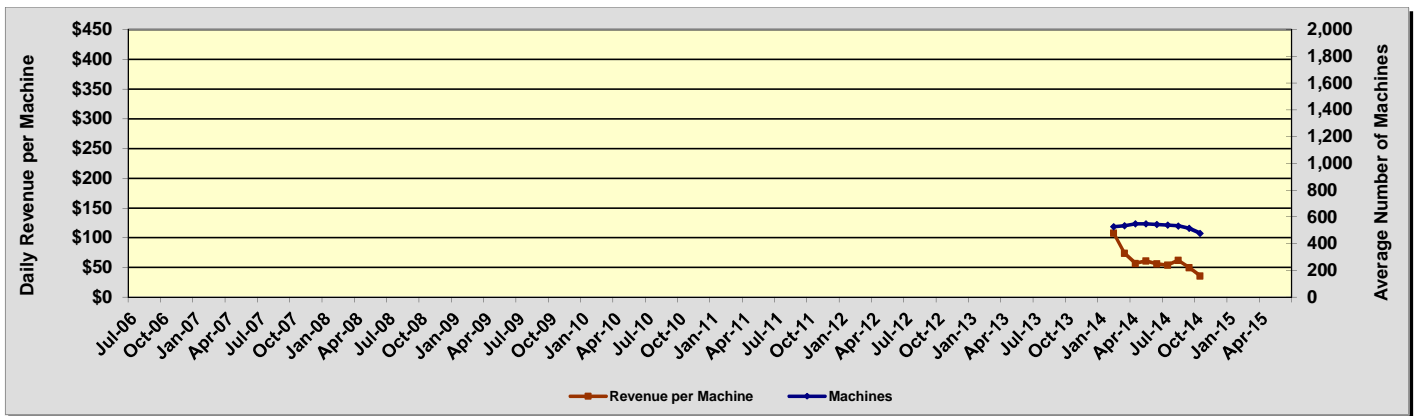


# Daily Revenue per Machine Compared to Average Number of Machines For Fiscal Years 2006/2007 - 2014/2015

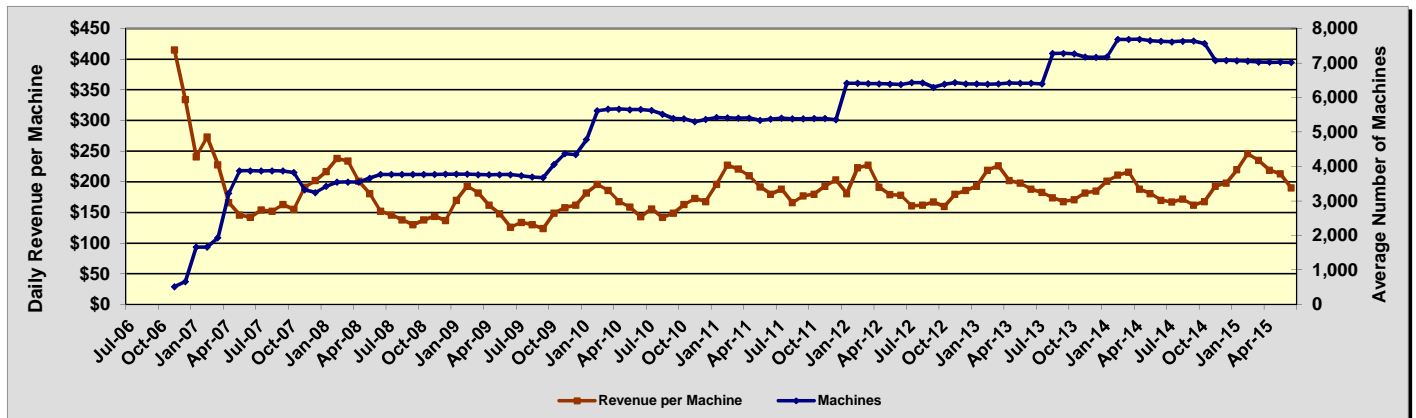
## HIALEAH PARK



## DANIA JAI ALAI <sup>(1)</sup>



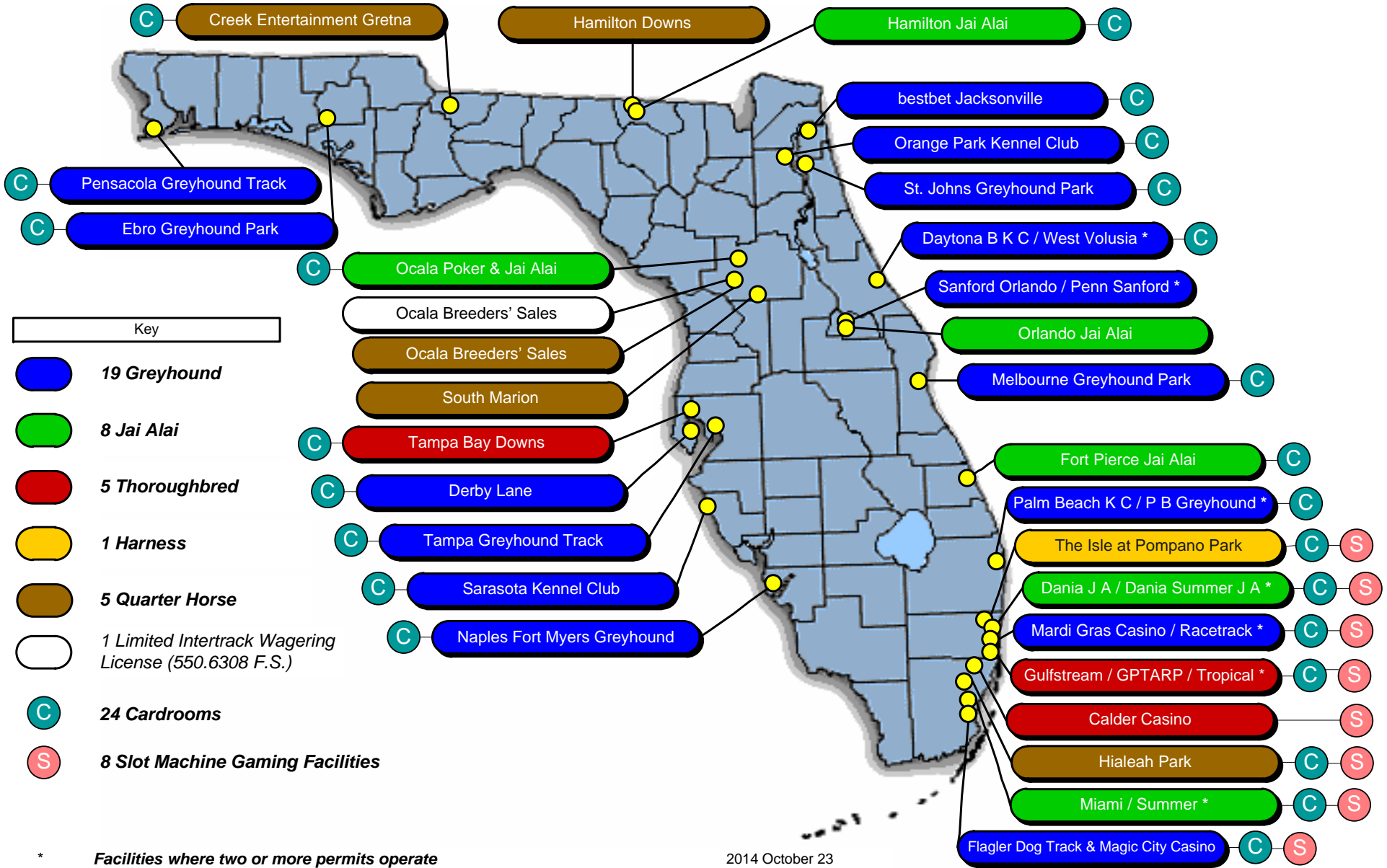
## ALL FACILITIES COMBINED

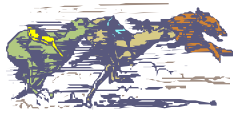


(1) Dania's Casino was open February 20, 2014, through October 12, 2014.

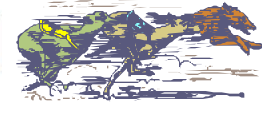
**DATA BY PERMITHOLDER/FACILITY**

# Pari-Mutuel Permitholders with 2014-2015 Operating Licenses





## GREYHOUND PERMITHOLDERS



Florida remains the leader in greyhound racing in the United States with 19 permitholders operating at 12 tracks throughout the state. A total of 3,515 completed performances, including charity and scholarship performances, were conducted during this past fiscal year, a minimal change from the previous year.

During Fiscal Year 2014/2015, handle wagered on live greyhound performances decreased by approximately two percent. Intertrack handle wagered on broadcasts of live Florida greyhound performances decreased by approximately three percent. Simulcast handle wagered on broadcasts of performances from outside the state increased by approximately two percent. Intertrack simulcast handle wagered on broadcast of performances from outside the state increased by approximately 15 percent. Overall, there was a decrease in total handle by approximately one percent for the Florida greyhound industry.

Total paid attendance decreased by approximately three percent from the prior year. The division reports only paid attendance and does not include free admissions or complimentary passes in its data. Total greyhound revenue to the state decreased by approximately four percent during Fiscal Year 2014/2015. The greyhound industry accounted for approximately 30.3 percent of Florida's total revenue and 31.9 percent of total handle from pari-mutuel performances.

Greyhound permitholders reported paying a total of \$25,631,721 in purses during Fiscal Year 2014/2015. For more detail on purses paid, please refer to the following information by permitholder. The division was able to confirm reported purse amounts from the weekly purse reports submitted in accordance with Section 61D-8.006, Florida Administrative Code.

All of Florida's greyhound permitholders actively sponsor greyhound adoption programs. Many of the state's greyhound tracks provide for on-site adoption booths, animal welfare, funding, advertising, special events and public information. Section 550.1647, Florida Statutes, provides a greyhound permitholder with credits in an amount equal to the uncashed pari-mutuel tickets remitted in the prior state fiscal year to the state, which is applied against any taxes imposed the next fiscal year. Additionally, Section 550.1647, Florida Statutes, requires each permitholder to pay an amount not less than 10 percent of the credit provided by this section to any bona fide organization that promotes or encourages the adoption of greyhounds. During Fiscal Year 2014/2015, total contributions provided to greyhound adoption units amounted to \$136,466 which exceeded the minimum statutory requirement.

Total Live Performances (Completed) <sup>(1)</sup>	3,515	Total Paid Attendance	276,495
<small>(1) Performances where eight or more races were held.</small>			
Total Live Performances (Actual)	3,530	Total Admission Tax	\$11,585
Total Racing Days	2,392		

<b><u>Daytona Beach Kennel Club, Inc.</u></b>			
Volusia County			
<b><u>Website</u></b>	<a href="http://www.daytonagreyhound.com">www.daytonagreyhound.com</a>	<b><u>Telephone</u></b>	386.252.6484
<b><u>Mailing/Street Address</u></b>	960 South Williamson Boulevard, Daytona Beach, Florida 32114-7247	<b><u>Fax</u></b>	386.252.4808
<b><u>Meet Period</u></b>	12/15/2014 to 06/30/2015		
<b><u>Racing Results</u></b>			
Live Performances (Completed)	248	Purses Paid	\$1,002,456
Live Performances (Actual)	250		
Racing Days	168	Paid Attendance	0
		Total Admission Tax	\$0
<b><u>Derby Lane</u></b>			
St. Petersburg Kennel Club, Inc. Pinellas County			
<b><u>Website</u></b>	<a href="http://www.derbylane.com">www.derbylane.com</a>	<b><u>Telephone</u></b>	727.812.3339
<b><u>Mailing/Street Address</u></b>	10490 Gandy Boulevard, St. Petersburg, Florida 33702-2395	<b><u>Fax</u></b>	727.812.3305
<b><u>Meet Period</u></b>	01/01/2015 to 06/30/2015		
<b><u>Racing Results</u></b>			
Live Performances (Completed)	207	Purses Paid	\$2,197,236
Live Performances (Actual)	207		
Racing Days	155	Paid Attendance	0
		Total Admission Tax	\$0

**Ebro Greyhound Park**Washington County Kennel Club, Inc.  
Washington County

<b>Website</b>	<a href="http://www.goebro.com">www.goebro.com</a>	<b>Telephone</b>	850.234.3943
<b>Mailing/Street Address</b>	6558 Dog Track Road, Ebro, Florida 32437-1142	<b>Fax</b>	850.535.4442
<b>Meet Period</b>	07/01/2014 to 09/20/2014 and 05/02/2015 to 06/30/2015		
<b>Racing Results</b>			
Live Performances (Completed)	184	Purses Paid	\$463,061
Live Performances (Actual)	184		
Racing Days	92	Paid Attendance	8,844
		Total Admission Tax	\$323

**Flagler Dog Track**West Flagler Associates, Ltd.  
Dade County

<b>Website</b>	<a href="http://www.magiccitycasino.com">www.magiccitycasino.com</a>	<b>Telephone</b>	305.649.3000
<b>Mailing Address</b>	Post Office Box 350940, Miami, Florida 33135-0940	<b>Fax</b>	305.631.4529
<b>Street Address</b>	401 N.W. 38th Court, Miami, Florida 33126-5638		
<b>Meet Period</b>	07/01/2014 to 10/25/2014 and 06/02/2015 to 06/30/2015		
<b>Racing Results</b>			
Live Performances (Completed)	153	Purses Paid	\$3,396,362
Live Performances (Actual)	163		
Racing Days	103	Paid Attendance	0
		Total Admission Tax	\$0

**H&T Gaming, Inc.**

Dade County

**See Mardi Gras Racetrack and Gaming Center's contact information for detail.**

<b>Meet Period</b>	02/15/2015 to 04/30/2015 at Mardis Gras		
<b>Racing Results</b>			
Live Performances (Completed)	106	Purses Paid	\$1,055,684
Live Performances (Actual)	106		
Racing Days	53	Paid Attendance	0
		Total Admission Tax	\$0

**Jacksonville Kennel Club, Inc.**Jacksonville Greyhound Racing, Inc.  
Duval County

<b>Website</b>	<a href="http://www.bestbetjax.com">www.bestbetjax.com</a>	<b>Telephone</b>	904.646.0001
<b>Mailing Address</b>	Post Office Box 959, Orange Park, Florida 32067-0959	<b>Fax</b>	904.646.0420
<b>Street Address</b>	201 Monument Road, Jacksonville, Florida 32225-8106		
<b>Meet Period</b>	07/02/2014 to 09/28/2014 at Orange Park		
<b>Racing Results</b>			
Live Performances (Completed)	104	Purses Paid	\$931,749
Live Performances (Actual)	104		
Racing Days	77	Paid Attendance	0
		Total Admission Tax	\$0

**Jefferson County Kennel Club, Inc.**

Jefferson County

<b>Mailing Address</b>	Post Office Box 400, Monticello, Florida 32345-0400	<b>Telephone</b>	850.997.2561
<b>Street Address</b>	3079 North Jefferson Street, Monticello, Florida 32344-5685	<b>Fax</b>	850.997.3871
<b>Meet Period</b>	Jefferson County license was suspended during the 2014/2015 year; therefore no live performances were conducted.		
<b>Racing Results</b>			
Live Performances (Completed)	0	Purses Paid	\$0
Live Performances (Actual)	0		
Racing Days	0	Paid Attendance	0
		Total Admission Tax	\$0

**License Acquisitions, LLC (Palm Beach Greyhound Racing)**

Palm Beach County

**See Palm Beach Kennel Club's contact information for detail.**

<b>Meet Period</b>	07/01/2014 to 09/30/2014 at Palm Beach Kennel Club		
<b>Racing Results</b>			
Live Performances (Completed)	118	Purses Paid	\$986,937
Live Performances (Actual)	118		
Racing Days	92	Paid Attendance	6,777
		Total Admission Tax	\$91

**Mardi Gras Racetrack and Gaming Center**

Hartman and Tyner, Inc.  
Broward County

<b>Website</b>	<a href="http://www.mgfla.com">www.mgfla.com</a>	<b>Telephone</b>	954-924-3200
<b>Mailing/Street Address</b>	831 North Federal Highway, Hallandale Beach, Florida 33009-2410	<b>Fax</b>	954.924.3143
<b>Meet Period</b>	12/01/2014 to 02/14/2015		
<b>Racing Results</b>			
Live Performances (Completed)	105	Purses Paid	\$1,027,511
Live Performances (Actual)	106		
Racing Days	53	Paid Attendance	0
		Total Admission Tax	\$0

**Melbourne Greyhound Park, LLC**

Brevard County

<b>Website</b>	<a href="http://www.mgpark.com">www.mgpark.com</a>	<b>Telephone</b>	321.259.9800
<b>Mailing/Street Address</b>	1100 North Wickham Road, Melbourne, Florida 32935-8941	<b>Fax</b>	321.259.3437
<b>Meet Period</b>	01/02/2015 to 04/18/2015		
<b>Racing Results</b>			
Live Performances (Completed)	108	Purses Paid	\$371,026
Live Performances (Actual)	108		
Racing Days	92	Paid Attendance	0
		Total Admission Tax	\$0

**Naples-Ft. Myers Greyhound Track**

Southwest Florida Enterprises, Inc.  
Lee County

<b>Website</b>	<a href="http://www.naplesfortmyersdogs.com">www.naplesfortmyersdogs.com</a>	<b>Telephone</b>	239.992.2411
<b>Mailing Address</b>	Post Office Box 2567, Bonita Springs, Florida 34133-2567	<b>Fax</b>	239.947.9244
<b>Street Address</b>	10601 Bonita Beach Road, S.W., Bonita Springs, Florida 34135-5620		
<b>Meet Period</b>	10/31/2014 to 05/25/2015		
<b>Racing Results</b>			
Live Performances (Completed)	398	Purses Paid	\$1,701,827
Live Performances (Actual)	399		
Racing Days	191	Paid Attendance	159,675
		Total Admission Tax	\$10,158

**Orange Park Kennel Club, Inc.**

Jacksonville Greyhound Racing, Inc.  
Clay County

<b>Website</b>	<a href="http://www.bestbetjax.com">www.bestbetjax.com</a>	<b>Telephone</b>	904.646.0001
<b>Mailing Address</b>	Post Office Box 959, Orange Park, Florida 32067-0959	<b>Fax</b>	904.646.0420
<b>Street Address</b>	455 Park Avenue, Orange Park, Florida 32073-3101		
<b>Meet Period</b>	09/29/2014 to 11/30/2014 and 04/27/2015 to 06/29/2015		
<b>Racing Results</b>			
Live Performances (Completed)	145	Purses Paid	\$1,339,454
Live Performances (Actual)	145		
Racing Days	108	Paid Attendance	0
		Total Admission Tax	\$0

**Palm Beach Kennel Club**

Investment Corporation of Palm Beach  
Palm Beach County

<b>Website</b>	<a href="http://www.pbkennelclub.com">www.pbkennelclub.com</a>	<b>Telephone</b>	561.683.2222
<b>Mailing/Street Address</b>	1111 North Congress Avenue, West Palm Beach, Florida 33409-6317	<b>Fax</b>	561.471.9114
<b>Meet Period</b>	10/01/2014 to 06/30/2015		
<b>Racing Results</b>			
Live Performances (Completed)	349	Purses Paid	\$3,313,872
Live Performances (Actual)	350		
Racing Days	271	Paid Attendance	25,373
		Total Admission Tax	\$815

**Penn Sanford, LLC, d/b/a Sanford-Orlando Kennel Club**

Seminole County

<b>See SOKC, LLC's contact information for detail.</b>			
<b>Meet Period</b>	07/02/2014 to 12/31/2014		
<b>Racing Results</b>			
Live Performances (Completed)	146	Purses Paid	\$799,409
Live Performances (Actual)	146		
Racing Days	115	Paid Attendance	0
		Total Admission Tax	0

**Pensacola Greyhound Racing, LLP**

Escambia County

**Website** [www.pensacolagreyhoundtrack.com](http://www.pensacolagreyhoundtrack.com)  
**Mailing Address** Post Office Box 12824, Pensacola, Florida 32591-2824  
**Street Address** 951 Dog Track Road, Pensacola, Florida 32506-8236  
**Meet Period** 07/02/2014 to 10/4/2014 and 01/23/2015 to 06/28/2015  
**Racing Results**  
Live Performances (Completed) 160 Purses Paid \$827,398  
Live Performances (Actual) 160  
Racing Days 128 Paid Attendance 0  
Total Admission Tax \$0

**SOKC, LLC, d/b/a Sanford-Orlando Kennel Club**

Seminole County

**Website** [www.sanfordorlandokc.com](http://www.sanfordorlandokc.com)  
**Mailing/Street Address** 301 Dog Track Road, Longwood, Florida 32750-6558  
**Meet Period** 01/01/2015 to 06/29/2015  
**Racing Results**  
Live Performances (Completed) 181 Purses Paid \$915,315  
Live Performances (Actual) 181  
Racing Days 129 Paid Attendance 0  
Total Admission Tax \$0

**Sarasota Kennel Club, Inc.**

Sarasota County

**Website** [www.sarasotakennelclub.com](http://www.sarasotakennelclub.com)  
**Mailing/Street Address** 5400 Bradenton Road, Sarasota, Florida 34234-2999  
**Meet Period** 11/07/2014 to 04/25/2015  
**Racing Results**  
Live Performances (Completed) 193 Purses Paid \$791,149  
Live Performances (Actual) 193  
Racing Days 143 Paid Attendance 75,826  
Total Admission Tax \$198

**St. Johns Greyhound Park (Bayard Raceways, Inc.)**Jacksonville Greyhound Racing, Inc.  
St. Johns County

**Website** [www.bestbetjax.com](http://www.bestbetjax.com)  
**Mailing Address** Post Office Box 959, Orange Park, Florida 32067-0959  
**Street Address** 6322 Racetrack Road, Jacksonville, Florida 32259-2107  
**Meet Period** 12/01/2014 to 04/26/2015 at Orange Park  
**Racing Results**  
Live Performances (Completed) 166 Purses Paid \$1,652,523  
Live Performances (Actual) 166  
Racing Days 124 Paid Attendance 0  
Total Admission Tax \$0

**Tampa Greyhound Track**TBDG Acquisition, LLC  
Hillsborough County

**Website** [www.tgtpoker.com](http://www.tgtpoker.com)  
**Mailing Address** Post Office Box 8096, Tampa, Florida 33674-8096  
**Street Address** 8300 North Nebraska Ave., Tampa, Florida 33604-3107  
**Meet Period** 07/01/2014 to 12/31/2014 at Derby Lane  
**Racing Results**  
Live Performances (Completed) 209 Purses Paid \$2,113,033  
Live Performances (Actual) 209  
Racing Days 156 Paid Attendance 0  
Paid Attendance 0  
Total Admission Tax \$0

**West Volusia Racing, Inc.**

Volusia County

**See Daytona Beach Kennel Club's contact information for detail.**  
**Meet Period** 07/01/2014 to 12/13/2014 at Daytona Beach Kennel Club  
**Racing Results**  
Live Performances (Completed) 235 Purses Paid \$745,719  
Live Performances (Actual) 235  
Racing Days 142 Paid Attendance 0  
Total Admission Tax \$0





## JAI ALAI PERMITHOLDERS



Florida was the first state in the nation to conduct jai alai performances, with the first fronton being built in 1926. There are eight jai alai permitholders operating at six frontons throughout Florida. In fact, Florida is now the only state where pari-mutuel wagering on live jai alai games is conducted. A total of 925 completed performances, including charity and scholarship performances, were conducted during this past fiscal year, an increase of approximately 19 percent from the previous fiscal year.

During Fiscal Year 2014/2015, handle wagered on live jai alai performances decreased by approximately 39 percent. Intertrack handle wagered on broadcasts of live Florida jai alai performances decreased by approximately 43 percent. There are no longer any other states that conduct jai alai; therefore, there was no simulcast or intertrack simulcast handle. Total handle declined by approximately 41 percent for the Florida jai alai industry.

Total jai alai revenue to the state decreased by approximately three percent during Fiscal Year 2014/2015. The jai alai industry accounted for approximately 3.2 percent of Florida's total revenue and 1.9 percent of total handle from pari-mutuel performances.

Permitholders reported paying a total of \$4,745,469 in players' awards. For more detail on players' awards paid, please refer to the following information by permitholder.

Total paid attendance decreased by 100 percent from the prior year. The division reports only paid attendance and does not include free admissions or complimentary passes in its data.

Total Performances (Completed) <sup>(1)</sup>	925	Total Paid Attendance	0
<small>(1) Performances where eight or more games were held.</small>			
Total Performances (Actual)	925		
Total Gaming Days	522	Total Admission Tax	\$0

<b>Dania Jai Alai</b>			
Dania Entertainment Center, LLC Broward County			
<b>Website</b>	<a href="http://www.casinodaniabeach.com">www.casinodaniabeach.com</a>	<b>Telephone</b>	954.927.2841
<b>Mailing/Street Address</b>	301 East Dania Beach Boulevard, Dania Beach, Florida 33004-3016	<b>Fax</b>	954.925.7529
<b>Meet Period</b>	10/07/2014 to 12/30/2014		
<b>Gaming Results</b>			
Live Performances (Completed)	180	Paid Attendance	0
Live Performances (Actual)	180	Total Admission Tax	\$0
Live Operating Days	70		
Players' Awards Paid	\$939,484		
<b>Dania Summer Jai Alai</b>			
Dania Entertainment Center, LLC Broward County			
<b>See Dania Jai Alai's contact information for detail.</b>			
<b>Meet Period</b>	07/01/2014 to 10/06/2014 at Dania Jai Alai		
<b>Gaming Results</b>			
Live Performances (Completed)	109	Paid Attendance	0
Live Performances (Actual)	109	Total Admission Tax	\$0
Live Operating Days	55		
Players' Awards Paid	\$622,035		
<b>Ft. Pierce Jai Alai</b>			
Fronton Holdings, LLC St. Lucie County			
<b>Website</b>	<a href="http://www.casinomiamijai.com">www.casinomiamijai.com</a>	<b>Telephone</b>	772.464.7500
<b>Mailing/Street Address</b>	1750 South Kings Highway, Ft. Pierce, Florida 34945-3099	<b>Fax</b>	772.464.0099
<b>Meet Period</b>	02/27/2015 to 03/27/2015		
<b>Miscellaneous Revenue to State</b>	\$34,538	(See Section 550.09511(4), Florida Statutes, for detail.)	
<b>Gaming Results</b>			
Live Performances (Completed)	41	Paid Attendance	0
Live Performances (Actual)	41	Total Admission Tax	\$0
Live Operating Days	21		
Players' Awards Paid	\$152,543		

**Hamilton Jai Alai and Poker**Richmond Entertainment, Inc.  
Hamilton County**Mailing/Street Address** 6968 US Highway 129 South, Jasper, Florida 32052-6774**Telephone** 386.638.0011**Fax** 386.638.0033**Meet Period** 05/17/2015 to 06/24/2015**Gaming Results**

Live Performances (Completed)	228	Paid Attendance	0
Live Performances (Actual)	228	Total Admission Tax	\$0
Live Operating Days	38		
Players' Awards Paid	\$17,000		

**Miami Jai Alai**Fronton Holdings, LLC  
Dade County**Website** [www.casinomiamijai.com](http://www.casinomiamijai.com)**Telephone** 305.633.6400**Mailing/Street Address** 3500 N.W. 37th Avenue, Miami, Florida 33142-4923**Fax** 305.634.7013**Meet Period** 11/02/2014 to 04/30/2015**Gaming Results**

Live Performances (Completed)	153	Paid Attendance	0
Live Performances (Actual)	153	Total Admission Tax	\$0
Live Operating Days	153		
Players' Awards Paid	\$1,461,314		

**Ocala Poker and Jai Alai**Second Chance Jai Alai, LLC  
Marion County**Website** [www.ocalapokerroom.com](http://www.ocalapokerroom.com)**Telephone** 352.591.2345**Mailing Address** Post Office Box 580, Orange Lake, Florida 32681-0580**Fax** 352.591.3402**Street Address** 4601 N.W. Highway 318, Reddick, Florida 32686**Meet Period** 02/02/2015 to 03/02/2015**Miscellaneous Revenue to State** \$22,000 (See Section 550.09511(4), Florida Statutes, for detail.)**Gaming Results**

Live Performances (Completed)	41	Paid Attendance	0
Live Performances (Actual)	41	Total Admission Tax	\$0
Live Operating Days	21		
Players' Awards Paid	\$147,480		

**Orlando Jai Alai**RB Jai Alai, LLC  
Seminole County**Website** [www.orlandoliveevents.com](http://www.orlandoliveevents.com)**Telephone** 407.339.6221**Mailing/Street Address** 6405 South Highway 17-92, Fern Park, Florida 32730-2057**Fax** 407.831.4689**Meet Period** 04/03/2015 to 05/30/2015**Miscellaneous Revenue to State** \$15,200 (See Section 550.09511(4), Florida Statutes, for detail.)**Gaming Results**

Live Performances (Completed)	43	Paid Attendance	0
Live Performances (Actual)	43	Total Admission Tax	\$0
Live Operating Days	34		
Players' Awards Paid	\$0		

**Summer Jai Alai Partnership**

Dade County

**See Miami Jai Alai's contact information for detail.****Meet Period** 08/03/2014 to 10/31/2014 and 05/01/2015 to 06/29/2015 at Miami Jai Alai**Gaming Results**

Live Performances (Completed)	130	Paid Attendance	0
Live Performances (Actual)	130	Total Admission Tax	\$0
Live Operating Days	130		
Players' Awards Paid	\$1,405,613		



## THOROUGHBRED PERMITHOLDERS



Florida continues to be a premier thoroughbred racing state with five permitholders operating at three tracks located in Central and South Florida. A total of 330 completed performances, including charity and scholarship performances, were conducted during this past fiscal year, a decrease of approximately 21 percent from the previous fiscal year.

During Fiscal Year 2014/2015, handle on live thoroughbred performances increased by approximately four percent. Handle from intertrack wagering increased approximately six percent. Simulcast handle wagered on broadcasts of performances from outside the state decreased by approximately 46 percent. Intertrack simulcast handle decreased by approximately two percent. Overall, total handle decreased by approximately 11 percent for the Florida thoroughbred industry.

Total thoroughbred revenue to the state during Fiscal Year 2014/2015, decreased by approximately 12 percent from the prior year. The thoroughbred industry accounted for approximately 58.1 percent of Florida's total revenue and 60.1 percent of total handle from pari-mutuel performances.

Permitholders reported paying a total of \$86,208,744 in purses. For more detail on purses paid, please refer to the following information by permitholder. The Florida Thoroughbred Breeders' and Owners' Association did not dispute the amount of purses paid reported by the permitholders.

Total paid attendance increased by eight percent from the prior year. The division reports only paid attendance and does not include free admissions or complimentary passes in its data.

Total Performances (Completed) <sup>(1)</sup>	330	Total Paid Attendance	101,165
<small>(1) Performances where eight or more races were held.</small>			
Total Performances (Actual)	391		
Total Racing Days	335	Total Admission Tax	\$20,675

<b>Calder Race Course, Inc.</b>			
<small>Churchill Downs, Inc. Dade County</small>			
<b>Website</b>	<a href="http://www.caldercasino.com">www.caldercasino.com</a>	<b>Telephone</b>	305.625.1311
<b>Mailing/Street Address</b>	21001 N.W. 27th Avenue, Miami Gardens, Florida 33056-1461	<b>Fax</b>	305.625.2505
<b>Meet Period</b>	10/08/2014 to 11/30/2014		
<b>Racing Results</b>			
Live Performances (Completed)	40	Purses Paid	\$7,375,507
Live Performances (Actual)	100	Paid Attendance	0
Racing Days	44	Total Admission Tax	\$0
<b>Gulfstream Park Racing Association, Inc.</b>			
<small>Stronach Group Broward County</small>			
<b>Website</b>	<a href="http://www.gulfstreampark.com">www.gulfstreampark.com</a>	<b>Telephone</b>	954.454.7000
<b>Mailing/Street Address</b>	901 South Federal Highway, Hallandale Beach, Florida 33009-7124	<b>Fax</b>	954.457.6291
<b>Meet Period</b>	07/01/2014 and 12/06/2014 to 05/22/2015 and 06/30/2015		
<b>Racing Results</b>			
Live Performances (Completed)	120	Purses Paid	\$62,094,688
Live Performances (Actual)	121	Paid Attendance	0
Racing Days	121	Total Admission Tax	\$0
<b>Gulfstream Park Thoroughbred After Racing Program, Inc.</b>			
<small>Stronach Group Broward County</small>			
<b>See Gulfstream Park Racing Association, Inc.'s contact information for detail.</b>			
<b>Meet Period</b>	07/04/2014 to 9/07/2014 and 12/10/2014		
<b>Racing Results</b>			
Live Performances (Completed)	39	Purses Paid	\$1,493,679
Live Performances (Actual)	39	Paid Attendance	0
Racing Days	39	Total Admission Tax	\$0

**Tampa Bay Downs, Inc.**

Hillsborough County

**Website**

[www.tampabaydowns.com](http://www.tampabaydowns.com)

**Mailing Address**

Post Office Box 2007, Oldsmar, Florida 34677-7007

**Telephone**

813.855.4401

**Street Address**

11225 Race Track Road, Tampa, Florida 33626-3122

**Fax**

813.854.3539

**Meet Period**

07/01/2014, 11/29/2014 to 05/03/2015 and 06/30/2015

**Racing Results**

Live Performances (Completed)	91	Purses Paid	\$15,244,870
Live Performances (Actual)	91	Paid Attendance	101,165
Racing Days	91	Total Admission Tax	\$20,675

**Tropical Park, LLC**

Churchill Downs, Inc.

Dade County

**See Calder's contact information for detail.**

**Meet Period** 09/11/2014 to 10/04/2014 and 05/23/2015 to 06/28/2015 at Gulfstream Park

**Racing Results**

Live Performances (Completed)	40	Purses Paid	\$0
Live Performances (Actual)	40	Paid Attendance	0
Racing Days	40	Total Admission Tax	\$0



## QUARTER HORSE PERMITHOLDERS



There are five permitholders conducting quarter horse racing performances at five tracks located in the State of Florida. In Fiscal Year 2014/2015, a total of 117 completed performances were conducted, an increase of approximately 17 percent from the previous fiscal year.

During Fiscal Year 2014/2015, handle wagered on live quarter horse performances decreased by approximately five percent. Intertrack handle wagered on broadcasts of performances increased by approximately 68 percent. Simulcast handle wagered on broadcasts of performances from outside the state had no changes, along with intertrack simulcast handle. Overall, total handle increased by approximately two percent for the Florida quarter horse industry.

Total quarter horse revenue to the state during Fiscal Year 2014/2015, increased by approximately 16 percent. The quarter horse industry accounted for approximately 1.1 percent of Florida's total revenue and 0.3 percent of total handle from pari-mutuel performances.

Permitholders reported paying a total of \$6,391,000 in purses. For more detail on purses paid, please refer to the following information by permitholder. The Florida Quarter Horse Breeders' and Owners' Association was able to confirm the amount of purses paid reported by Hialeah Park.

The division reports only paid attendance and does not include free admissions or complimentary passes in its data.

Total Performances (Completed) <sup>(1)</sup>	117	Total Paid Attendance	0
<small>(1) Performances where eight or more races were held.</small>			
Total Performances (Actual)	119		
Total Racing Days	66	Total Admission Tax	\$0

<b><u>Gretna Racing, LLC</u></b>			
Gadsden County			
<b><u>Website</u></b>	<a href="http://www.creekenentertainment.com">www.creekenentertainment.com</a>	<b><u>Telephone</u></b>	850.875.6920
<b><u>Mailing Address</u></b>	Post office Box 70, Grenta, Florida 32332		
<b><u>Street Address</u></b>	501 Racetrack Drive, Gretna, Florida 32332	<b><u>Fax</u></b>	
<b><u>Meet Period</u></b>	07/05/2014 to 10/05/2014		
<b><u>Racing Results</u></b>			
Live Performances (Completed)	38	Purses Paid	\$167,000
Live Performances (Actual)	38		
Racing Days	10	Paid Attendance	0
		Total Admission Tax	\$0
<b><u>Hamilton Downs Horsetrack, LLC</u></b>			
Hamilton County			
<b><u>Mailing Address</u></b>	6968 US Highway 129, Jasper, Florida 32052-6774	<b><u>Telephone</u></b>	386.638.0011
<b><u>Street Address</u></b>	2220 Northwest County Road 143, Jennings, Florida 32053	<b><u>Fax</u></b>	386.638.0033
<b><u>Meet Period</u></b>	06/14/2015 to 06/18/2015		
<b><u>Racing Results</u></b>			
Live Performances (Completed)	20	Purses Paid	\$22,000
Live Performances (Actual)	20		
Racing Days	5	Paid Attendance	0
		Total Admission Tax	\$0
<b><u>Hialeah Park</u></b>			
South Florida Racing Association, LLC Dade County			
<b><u>Website</u></b>	<a href="http://www.hialeahparkcasino.com">www.hialeahparkcasino.com</a>	<b><u>Telephone</u></b>	305.885.8000
<b><u>Mailing Address</u></b>	Post Office Box 158, Hialeah, Florida 33011	<b><u>Fax</u></b>	305.887.8006
<b><u>Street Address</u></b>	2200 East 4th Avenue, Hialeah, Florida 33010		
<b><u>Meet Period</u></b>	12/26/2014 to 03/03/2015		
<b><u>Racing Results</u></b>			
Live Performances (Completed)	39	Purses Paid	\$5,852,000
Live Performances (Actual)	40		
Racing Days	40	Paid Attendance	0
		Total Admission Tax	\$0

**Ocala Breeder's Sales Company, Inc.**

Marion County

**Website** [www.obssales.com](http://www.obssales.com)

**Telephone** 352.237.2154

**Mailing Address** Post Office Box 99, Ocala, Florida 34478-0099

**Fax** 352.237.2357

**Street Address** 1701 Southwest 60th Avenue, Ocala, Florida 34474-1800

**Meet Period** 1/27/2015

**Racing Results**

Live Performances (Completed)	0	Purses Paid	\$310,000
Live Performances (Actual)	1		
Racing Days	1	Paid Attendance	0
		Total Admission Tax	\$0

**South Marion Real Estate Holdings, LLC**

Central Florida Gaming, LLC

Marion County

**Mailing Address** Post Office Box 6331, Ocala, Florida, 34478

**Telephone** 352.817.7522

**Street Address** 6390 S.E. 177th Place, Summerfield, Florida 34491

**Fax** None Listed

**Meet Period** 07/01/2014 to 07/10/2014

**Racing Results**

Live Performances (Completed)	20	Purses Paid	\$40,000
Live Performances (Actual)	20		
Racing Days	10	Paid Attendance	0
		Total Admission Tax	\$0



## HARNESS PERMITHOLDERS



Pompano Park is the only permitholder conducting harness horse racing performances in the State of Florida. A total of 126 completed performances, including charity and scholarship performances, were conducted during this past fiscal year, which is the same as the previous year.

During Fiscal Year 2014/2015, handle wagered on live harness performances increased by approximately three percent. Intertrack handle wagered on broadcasts of live Florida harness performances increased by approximately 33 percent. Simulcast handle wagered on broadcasts of performances from outside the state increased by approximately seven percent while intertrack simulcast handle increased by approximately six percent. Overall, total handle increased by approximately seven percent for the Florida harness industry.

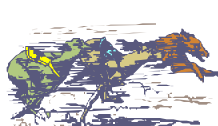
Total revenue to the state during Fiscal Year 2014/2015, increased by approximately four percent from the prior fiscal year. The harness industry accounted for approximately 7.3 percent of Florida's total revenue and 5.8 percent of total handle from pari-mutuel performances.

Pompano Park reported paying \$8,614,066 in purses. For more detail on purses paid, please refer to the information below. The Florida Standardbred Breeders' and Owners' Association was able to confirm the amount of purses paid reported by Pompano Park.

The division reports only paid attendance and does not include free admissions or complimentary passes in its data.

Total Performances (Completed) <sup>(1)</sup>	126	Total Paid Attendance	0
(1) Performances where eight or more races were held.			
Total Performances (Actual)	126		
Total Racing Days	126	Total Admission Tax	\$0

<b>Isle Casino and Racing at Pompano Park</b>			
PPI, Inc. Broward County			
<b>Website</b>	<a href="http://pompano-park.isleofcapricasinos.com">pompano-park.isleofcapricasinos.com</a>	<b>Telephone</b>	954.972.2000
<b>Mailing/Street Address</b>	777 Isle of Capri Circle Pompano Beach, Florida 33069-3104	<b>Fax</b>	954.970.0882
<b>Meet Period</b>	10/04/2014 to 06/27/2015		
<b>Racing Results</b>			
Live Performances (Completed)	126	Purses Paid	\$8,614,066
Live Performances (Actual)	126	Paid Attendance	0
Racing Days	126	Total Admission Tax	\$0



## SUMMARY

## PARI-MUTUEL INDUSTRY

During Fiscal Year 2014/2015, the total handle wagered for all industries exceeded \$779 million, a decrease of approximately eight percent from the prior fiscal year. Total pari-mutuel completed performances, including charity and scholarship performances, conducted during Fiscal Year 2014/2015 increased by approximately one percent from the previous fiscal year.

The state realized revenue from performances of approximately \$10.9 million, a decrease of roughly eight percent from the prior fiscal year. Of the \$10.9 million collected, greyhound permitholders accounted for 30.3 percent, thoroughbreds for 58.1 percent, harness for 7.3 percent, jai alai for 3.2 percent, and quarter horse for 1.1 percent.

Total paid attendance decreased approximately two percent from the prior year. The division reports only paid attendance and does not include free admission or complimentary passes in its data.



## HORSE RACING

### Promotional Programs for Florida-Bred Horses \*

Florida breeder promotions and award programs are administered by private breeders' and owners' associations organized to promote ownership and breeding of race horses in the State of Florida. Each association conducts its own campaign to enhance the horse breeding industry in the state and provides breeders' and owners' awards of up to 20 percent of announced gross purses. The Florida Standardbred Breeders' and Owners' Association is funded by the breaks and uncashed tickets from live performances and one percent of the intertrack handle. The Quarter Horse Breeders' Association is funded by the breaks and the uncashed tickets from live races and one percent of the live and intertrack handle. The Florida Thoroughbred Breeders' and Owners' Association awards program is funded by 0.955 percent of the live, simulcast and intertrack handle, as well as 3.475 percent of the gross revenue from out-of-state wagers on Florida races.

To date, the Florida thoroughbred breeding industry has produced 50 national champions. Florida also produced "Affirmed," the eleventh horse to have swept the Triple Crown (1978). Ocala/Marion County, Florida, is home to some of the leading breeding farms in the country. The industry boasts 19 classic wins (Kentucky Derby, Preakness Stakes and Belmont Stakes), 26 Breeders' Cup Day champions and six horses of the year.

The Florida Thoroughbred Breeders' and Owners' Association (FTBOA) funds the Florida-bred Stakes Program, which is implemented at Florida's Thoroughbred racetracks. Through a percentage of pari-mutuel handle, Florida Thoroughbred permitholders contributed \$7,685,619 to the FTBOA during Fiscal Year 2014/2015. The FTBOA paid out \$4,988,595 in Breeders' Awards and \$1,294,250 through the Florida-bred Stakes Program. The Florida-bred Stakes Program includes "Florida Sire Stakes" at Gulfstream Park, "Sunshine Millions Preview" at Gulfstream Park West, "Florida Cup Day" at Tampa Bay Downs and additional funds for supplements to Florida-bred Preferred Stakes Races during the Gulfstream and Tampa Bay Downs' meets.

The Florida Standardbred Breeders' and Owners' Association, a non-profit organization and the only organized representative of Standardbred horsemen in the State of Florida, is the designated association for the allocation and distribution of funds for Florida-bred racing. Promotional activities include providing breeder and stallion awards for eligible Florida-bred horses during Pompano Park's 2014/2015 meet as well as awards for Florida Breeders' Stake races. The FSBOA also inaugurated a Breeder Incentive program in 2014 with the goal of offering Standardbred breeders a financial reward for the production of Florida-bred foals. This program will continue in future years. A series of races and awards were also provided for two and three-year-old Standardbreds to prepare for the winter meet at Pompano Park. The total amount of funds collected and distributed to the Florida Standardbred horsemen throughout the year exceeded \$1,013,697.

Section 550.2625(5)(a), Florida Statutes, designates the Florida Quarter Horse Breeders' and Owners' Association (FQHBOA) as the authorized organization to receive breeders and awards payments from the permitholders and make payments in accordance with Florida Statutes.

By agreement, Hialeah Park pays 2 percent of the total purse to FQHBOA for breeders' and owners' awards. This is in excess of statutory requirements. Other tracks pay a sum equal to the breaks plus one percent of all pari-mutuel pools conducted during their meets for supplementing purses and prizes for the general promotion of owning and breeding quarter horses in Florida as authorized in Florida Statutes.

During 2014/2015, \$115,000 was paid out to 63 owners' and breeders' in awards. Each fiscal year total awards have increased since it's first awards in 2009/2010.

*\* Note: This promotional program information is provided by respective Breeders' and Owners' Associations.*



**UNIVERSITY OF FLORIDA  
COLLEGE OF VETERINARY MEDICINE RACING LABORATORY**

The Florida Racing Laboratory in the College of Medicine at the University of Florida is an International Organization for Standardization ISO 17025 accredited laboratory that employs various procedures to detect and identify prohibited drugs, medications, stimulants, depressants, hypnotics, local anesthetics, and drug-masking agents in the blood, urine or other bodily fluids of racing horses and greyhounds.

During Fiscal Year 2014/2015, the Laboratory received and processed 67,587 samples and performed 254,238 analyses. The vigilant monitoring of samples by the Laboratory serves to deter the use of prohibited drugs in racing animals in Florida.

	Horse Urine/Blood	Greyhound Urine <sup>1</sup>	Investigative
<b>Samples Received</b>	16,337	51,233	17
<b>Samples Analyzed</b>	16,280	30,340	17
<b>Number of Analyses</b>	76,382	177,815	41
<b>Positives</b>	163	9	N/A

<sup>1</sup> Volume Not Sufficient For Testing 21,711 (42.4% of total number of samples received). Note: From January 31, 2015, through June 14, 2015, there were 14,509 greyhound samples collected. Of this total, 5,296 were testable samples and 9,213 were quantity not sufficient for analysis. During this timeframe, there were 2,398 attempts to collect samples from greyhounds that did not urinate.

<b>DRUG POSITIVES FOR FISCAL YEAR 2014/2015</b>		
<i>Types of Positives (ARCI Drug Class)</i>	<b>Horse</b>	<b>Greyhound</b>
Acepromazine metabolite (3)	5	0
Acepromazine metabolite (3), Methocarbamol (4), Phenylbutazone (n/a)	1	0
Benzoylcegonine (1)	0	3
Boldenone (3)	4	0
Carprofen (4)	0	1
Clenbuterol (3)	51	0
Clenbuterol (3), Flunixin (4)	1	0
Dimethylsulfoxide (DMSO) (5)	15	0
Flunixin (4)	5	2
Glycopyrrolate (3)	1	0
Ibuprofen (4), Methocarbamol (4)	1	0
Isoxsuprine (4)	1	0
Methocarbamol (4)	5	0
Naproxen (4)	1	0
Naproxen (4), Phenylbutazone (n/a)	1	0
Phenylbutazone (N/A)	56	0
Procaine (3)	2	2
Testosterone (3)	5	0
Testosterone (3), Boldenone (3)	1	0
Testosterone (3), Nandrolone (3), Dimethylsulfoxide (DMSO) (5)	3	0
Theobromine (4)	0	1
Zipaterol (2)	4	0
<b>TOTALS</b>	<b>163</b>	<b>9</b>

Class (1): Stimulant and depressant drugs that have the highest potential to affect performance and that have no generally accepted medical use in the racing horse.

Class (2): Drugs that have a high potential to affect performance, but less of a potential than drugs in Class 1.

Class (3): Drugs that may or may not have generally accepted medical use in the racing horse, but the pharmacology of which suggests less potential to affect performance than drugs in Class 2.

Class (4): This class includes therapeutic medications that would be expected to have less potential to affect performance than those in Class 3.

Class (5): This class includes therapeutic medications for which concentration limits have been established by the racing jurisdictions as well as certain miscellaneous agents such as dimethylsulfoxide (DMSO) and other medications as determined by the regulatory bodies.

# FINANCIAL STATEMENTS

**DIVISION OF PARI-MUTUEL WAGERING  
SUMMARY OF STATE REVENUE FROM PARI-MUTUEL, CARDROOM,  
SLOT ACTIVITIES, AND INDIAN GAMING COMPACT  
FISCAL YEAR 2014/2015**

<b>State Revenue From Regular Performances</b>	
Tax on Attendance	\$ 32,258
Daily License Fees	2,317,268
Tax on Handle	8,543,609
<b>State Revenue From Pari-Mutuel Performances <sup>(1)</sup></b>	<b>\$ 10,893,135</b>
<b>Other State Revenue</b>	
Occupational Licenses	\$ 525,302
Fingerprint Fees	235,539
Escheated Tickets <sup>(2)</sup>	795,228
Racing Scholarship Funds <sup>(2)</sup>	0
PMW Trust Fund - Drug Fines	87,650
Miscellaneous Revenue	32,581
General Revenue Fund - Other Fines	20,025
<b>Other State Revenue</b>	<b>\$ 1,696,325</b>
<b>Total Pari-Mutuel State Revenue</b>	<b>\$ 12,589,460</b>
<b>State Revenue From Cardrooms</b>	
Table Fees	\$ 693,000
Gross Receipts <sup>(3)</sup>	13,589,789
Occupational Licenses	184,502
<b>Total State Revenue From Cardrooms</b>	<b>\$ 14,467,291</b>
<b>State Revenue From Slots</b>	
Compulsive/Addictive Gambling Fee <sup>(4)</sup>	\$ 1,750,000
Facility License Fee <sup>(4)</sup>	14,000,000
Slot Taxes <sup>(5)</sup>	182,584,841
Fingerprint Fees	30,028
Occupational Licenses	337,334
Miscellaneous Revenue	5,572
Miscellaneous Fines	11,300
<b>Total State Revenue From Slots</b>	<b>\$ 198,719,075</b>
<b>Total State Revenue Generated From Pari-Mutuel, Cardroom, and Slots</b>	<b>\$ 225,775,826</b>
<b>State Revenue From Indian Gaming Compact</b>	
Indian Gaming Compact <sup>(6)</sup>	\$ 255,610,619
Indian Gaming Compact Reimbursements	253,772
<b>Total State Revenue From Indian Gaming Compact</b>	<b>\$ 255,864,391</b>
<b>TOTAL STATE REVENUE GENERATED</b>	<b>\$ 481,640,217</b>

(1) Daily license fees and taxes reported above are amounts collected, and not reflect amounts due.

(2) Escheated tickets and Racing Scholarship Funds are distributed to the Department of Education.

(3) One-half of cardroom gross receipts is deposited into the General Revenue Fund.

(4) Both amounts include payments from: Calder Casio and Race Course, Gulfstream Park Racing and Casino, Mardi Gras Racetrack and Gaming Center, Isle Casino and Racing at Pompano Park, Flagler Dog Track and Magic City Casino, Miami Jai Alai, and South Florida Racing Association (Hialeah Park).

(5) Slot taxes are distributed to the Department of Education.

(6) Indian Gaming Compact payments are deposited into the General Revenue Fund.

**DEPARTMENT OF BUSINESS & PROFESSIONAL REGULATION**  
**DIVISION OF PARI-MUTUEL WAGERING**  
**BALANCE SHEET**  
**SPECIAL REVENUE FUND**  
**FOR FISCAL YEAR ENDED JUNE 30, 2015**

	<u>2015</u>		<u>2014</u>
<b>ASSETS</b>			
Cash with State Treasurer	\$ 753,311	\$	656,790
Investments at cost	3,254,344		6,731,219
Accounts receivable	368,284		348,128
Taxes receivable	15,699,389		15,266,142
Allowance for uncollectibles	(36,217)		(32,884)
Interest receivable	5,066		11,371
Due from state funds	<u>286,564</u>		<u>175,988</u>
<b>TOTAL ASSETS</b>	<b>\$ <u>20,330,741</u></b>	<b>\$</b>	<b><u>23,156,753</u></b>
 <b>LIABILITIES &amp; FUND EQUITY</b>			
Liabilities:			
Accounts payable	\$ 98,554	\$	131,567
Accrued salaries	282,993		245,289
Due to other funds	15,432		4,325
Due to other state agencies	14,092,160		13,612,023
Due to general revenue	685,418		665,939
Compensated absences	<u>-</u>		<u>9,313</u>
Total Liabilities	<u>15,174,556</u>		<u>14,668,455</u>
 <b>Fund Equity</b>			
Unreserved	<u>5,156,185</u>		<u>8,488,298</u>
Total Fund Equity	<u>5,156,185</u>		<u>8,488,298</u>
<b>TOTAL LIABILITIES &amp; FUND EQUITY</b>	<b>\$ <u>20,330,741</u></b>	<b>\$</b>	<b><u>23,156,753</u></b>

The financial statements and notes are for informational purposes only.

**DEPARTMENT OF BUSINESS AND PROFESSIONAL REGULATION**  
**DIVISION OF PARI-MUTUEL WAGERING**  
**STATEMENT OF REVENUES, EXPENDITURES & CHANGES IN FUND BALANCE - BUDGET & ACTUAL**  
**SPECIAL REVENUE FUND**  
**FOR FISCAL YEAR ENDED JUNE 30, 2015**

	<u>FINAL BUDGET</u>	<u>2015 ACTUAL</u>	<u>VARIANCE</u>	<u>2014 ACTUAL</u>
<b>REVENUES:</b>				
Fees, Charges, Commissions and Sales	\$ 19,552,155	\$ 19,301,397	\$ (250,758)	\$ 19,569,151
Licenses and Permits	552,304	712,058	159,754	502,696
Taxes	197,324,441	198,093,473	769,032	190,162,520
Fines, Forfeits, Judgments and Settlements	212,335	95,112	(117,223)	116,787
Interest and Dividends, Net	29,537	122,153	92,616	84,893
Refunds	250,000	254,983	4,983	270,769
Miscellaneous Receipts	211,412	31,106	(180,306)	213,872
<b>Total Revenues</b>	<u>218,132,184</u>	<u>218,610,282</u>	<u>478,098</u>	<u>210,920,688</u>
<b>EXPENDITURES</b>				
<b>CURRENT OPERATING</b>				
Salaries	7,104,979	6,494,226	610,753	6,429,448
Other Personal Services	1,677,615	1,465,527	212,087	1,237,420
Other Operating Expenditures	976,075	842,849	133,226	736,549
Operation of Motor Vehicles	81,743	61,944	19,799	78,141
Risk Management	169,792	169,792	-	105,689
State Attorney-Slots	222,971	222,971	-	208,651
PMW Lab Services	2,266,000	2,266,000	-	2,266,000
PMW Compliance System	296,476	246,396	50,080	246,415
Tr/DMS/HR SVCS/STW Contract	58,635	58,635	-	57,114
Cardroom Tax Distribution	1,800,000	1,701,933	98,067	1,658,542
Other Contracted Services	141,731	29,530	112,201	31,082
Compulsive Gambling Prevention	930,000	930,000	0	600,000
Racing Animal Med Research	100,000	93,633	6,367	100,000
<b>OPERATING CAPITAL OUTLAY</b>	23,895	12,523	11,372	32,240
Acquisition of Motor Vehicles	24,802	20,385	4,417	54,798
Assessment for Fingerprinting	460,400	374,197	86,203	320,769
Service Charge to General Revenue	3,150,000	2,859,023	290,977	2,937,007
Refunds	164,650	13,173	151,477	132,397
Transfer to FDLE Slots Investigation	-	-	-	-
Transfers to Other Funds	188,594,212	184,079,657	4,514,555	175,530,395
Transfers to General Revenue	27,000,000	20,000,000	7,000,000	18,500,000
<b>Total Expenditures</b>	<u>235,243,976</u>	<u>221,942,395</u>	<u>13,301,581</u>	<u>211,262,657</u>
<b>Excess (Deficiency) of Revenues Over (Under) Expenditures</b>	<u>(17,111,792)</u>	<u>(3,332,113)</u>	<u>(12,823,484)</u>	<u>(341,969)</u>
<b>FUND BALANCE JULY 1, 2014</b>	8,488,298	8,488,298	-	8,830,267
<b>FUND BALANCE JUNE 30, 2015</b>	<u>\$ (8,623,494)</u>	<u>\$ 5,156,185</u>	<u>\$ (12,823,484)</u>	<u>\$ 8,488,298</u>
	(1)	(1)		

(1) Does not include budget of \$37,000,000 for category 190000 Investments. Actual expenditures for category 190000 were closed into the investment account.

The financial statements and notes are for informational purposes only.

**CARDROOM, PARI-MUTUEL, AND  
SLOT STATUTE MATRIX**

STATUTE TOPIC	GREYHOUND	JAI ALAI	THOROUGHBRED	HARNESS	QUARTER HORSE
<b>FEES</b>					
<b>Daily License Fees On Live / On-track Handle</b>	\$80 per race. <u>550.0951(1)(a), F.S.</u>	\$40 per game. <u>550.0951(1)(a), F.S.</u>	\$100 per race. <u>550.0951(1)(a), F.S.</u>	\$100 per race. <u>550.0951(1)(a), F.S.</u>	\$100 per race. <u>550.0951(1)(a), F.S.</u>
<b>Daily License Fees On Simulcast Handle</b>	\$80 per race, but not to exceed \$500 per day. <u>550.0951(1)(a), F.S.</u>	\$40 per game, but not to exceed \$500 per day. <u>550.0951(1)(a), F.S.</u>	\$100 per race, but not to exceed \$500 per day. <u>550.0951(1)(a), F.S.</u>	\$100 race, but not to exceed \$500 per day. <u>550.0951(1)(a), F.S.</u>	\$100 per race, but not to exceed \$500 per day. <u>550.0951(1)(a), F.S.</u>
<b>OUTS (ESCHEATS)</b>					
<b>Live / On-track Handle</b>	Paid to the state of Florida. <u>550.1645(2), F.S.</u>	Paid to the state of Florida. <u>550.1645(2), F.S.</u>	Retained by permitholder. <u>550.2633(3), F.S.</u>	Paid to Florida Standardbred Breeders' and Owners' Association (FSBOA). <u>550.26165(1) and 550.2633(2)(a), F.S.</u>	Paid to Florida Quarter Horse Breeders' and Owners Association (FQHBOA). <u>550.26165(1) and 550.2633(2)(b), F.S.</u>  Escheats from Arabian races are paid to Florida Arabian Horse Racing Promotion Account. <u>550.2633(2)(c), F.S.</u>
<b>TAXES</b>					
<b>Tax On Admissions</b>	15% of admission charge, or 10 cents, whichever is greater, for entrance to facility and grandstand. <u>550.0951(2)(a), F.S.</u>  No tax is imposed on free passes or complimentary cards. <u>550.0951(2)(b) and (c), F.S.</u>	15% of admission charge, or 10 cents, whichever is greater, for entrance to facility and grandstand. <u>550.0951(2)(a), F.S.</u>  No tax is imposed on free passes or complimentary cards. <u>550.0951(2)(b) and (c), F.S.</u>	15% of admission charge, or 10 cents, whichever is greater, for entrance to facility and grandstand. <u>550.0951(2)(a), F.S.</u>  No tax is imposed on free passes or complimentary cards. <u>550.0951(2)(b) and (c), F.S.</u>	15% of admission charge, or 10 cents, whichever is greater, for entrance to facility and grandstand. <u>550.0951(2)(a), F.S.</u>  No tax is imposed on free passes or complimentary cards. <u>550.0951(2)(b) and (c), F.S.</u>	15% of admission charge, or 10 cents, whichever is greater, for entrance to facility and grandstand. <u>550.0951(2)(a), F.S.</u>  No tax is imposed on free passes or complimentary cards. <u>550.0951(2)(b) and (c), F.S.</u>
<b>Tax On Live / On-track Handle</b>	5.5% of handle, except for charity performances which is 7.6% of handle. <u>550.0951(3)(b)1., F.S.</u>	Effective July 1, 2000, a permitholder may not be taxed at a higher rate than 2%. <u>550.0951(3)(d), F.S.</u>	0.5% of handle. <u>550.09515(2)(a), F.S.</u>	0.5% of handle. <u>550.09512(2)(a), F.S.</u>	1% of handle. <u>550.0951(3)(a), F.S.</u>
<b>Tax On Simulcast Handle</b>	Allows permitholders to receive greyhound races from out-of-state, and are subject to taxation under 550.0951 and 550.09511. <u>550.3551(4), F.S.</u>	Allows permitholders to receive jai alai games from out-of-state, and are subject to taxation under 550.0951 and 550.09511. <u>550.3551(4), F.S.</u>	Allows permitholders to receive horse races from out-of-state, and are subject to taxation under 550.0951, 550.09512, and 550.09515. <u>550.3551(3) through 550.3551(3)(c), F.S.</u>	Allows permitholders to receive horse races from out-of-state, and are subject to taxation under 550.0951, 550.09512, and 550.09515. <u>550.3551(3) through 550.3551(3)(c), F.S.</u>	Allows permitholders to receive horse races from out-of-state, and are subject to taxation under 550.0951, 550.09512, and 550.09515. <u>550.3551(3) through 550.3551(3)(c), F.S.</u>

This matrix represents a summary of 2014 Statutes. Please refer to the cite noted by statutory topic for specific language governing pari-mutuel wagering.

STATUTE TOPIC	GREYHOUND	JAI ALAI	THOROUGHBRED	HARNESS	QUARTER HORSE
<b>Tax On Intertrack and Intertrack Simulcast Handle</b>	5.5% of intertrack and intertrack simulcast handle; except for the intertrack handle from charity performances at a guest track within the market area of the host, the tax is 7.6%. <u><a href="#">550.0951(3)(b)1 and 550.0951(3)(c)1, F.S.</a></u>	7.1% of intertrack and intertrack simulcast handle. <u><a href="#">550.0951(3)(b)2. and 550.0951(3)(c)1., F.S.</a></u>	2% of intertrack handle. <u><a href="#">550.0951(3)(c)1., F.S.</a></u>	3.3% of intertrack handle. <u><a href="#">550.0951(3)(c)1., F.S.</a></u>	2% of intertrack handle. <u><a href="#">550.0951(3)(c)1., F.S.</a></u>
	0.5% of intertrack and intertrack simulcast handle, if the guest is located outside market area of host and within market area of thoroughbred track conducting a live meet. <u><a href="#">550.0951(3)(c)1., F.S.</a></u>	0.5% of intertrack and intertrack simulcast handle, if the guest is located outside market area of host and within market area of thoroughbred track conducting a live meet. <u><a href="#">550.0951(3)(c)1., F.S.</a></u>	2.4% of intertrack simulcast handle. <u><a href="#">550.0951(3)(c)1. and 550.09515(5), F.S.</a></u>	1.5% of intertrack simulcast handle. <u><a href="#">550.0951(3)(c)1., F.S.</a></u>	2.4% of intertrack simulcast handle. <u><a href="#">550.0951(3)(c)1. and 550.09515(5), F.S.</a></u>
	3.9% of intertrack and intertrack simulcast handle, for permitholders located in an area of the state where there are only 3 greyhound permitholders, located in 3 contiguous counties. <u><a href="#">550.0951(3)(c)2., F.S.</a></u>	3.3% of intertrack and intertrack simulcast handle, if permitholder restricted from operating live on a year-round basis, and tax paid on intertrack handle exceeds that paid during 92/93 State Fiscal Year. <u><a href="#">550.09511(3)(a), F.S.</a></u>	0.5% of intertrack and intertrack simulcast handle, if host and guest are thoroughbred permitholders, or if the guest is located outside market area of host and within market area of thoroughbred track conducting a live meet. <u><a href="#">550.0951(3)(c)1., F.S.</a></u>	0.5% of intertrack and intertrack simulcast handle, if the guest is located outside market area of host and within market area of thoroughbred track conducting a live meet. <u><a href="#">550.0951(3)(c)1., F.S.</a></u>	0.5% of intertrack and intertrack simulcast handle, if the guest is located outside market area of host and within market area of thoroughbred track conducting a live meet. <u><a href="#">550.0951(3)(c)1., F.S.</a></u>
	3.9% of intertrack and intertrack simulcast handle, for greyhound permitholders located in the same market area specified in 550.615(9). <u><a href="#">550.0951(3)(c)2., F.S.</a></u>	6.1% of intertrack and intertrack simulcast handle, for jai alai permitholders located in the market area as specified in 550.615(6) or (9), until the tax paid on intertrack handle in the current state fiscal year exceeds that paid during 92/93 State Fiscal Year, then tax on handle is 2.3%. <u><a href="#">550.0951(3)(c)2., F.S.</a></u>	0.5% of intertrack simulcast handle, if guest track is a thoroughbred track located more than 35 miles from host track. <u><a href="#">550.09515(5), F.S.</a></u>		
<b>CHARITY PERFORMANCES</b>					
	Maximum of five days. <u><a href="#">550.0351(1), F.S.</a></u> Permitholders are allowed to conduct one additional day to be designated as "Greyhound Adopt-A-Pet Day." Proceeds are paid to "bona fide organizations" that promote the adoption of greyhounds. <u><a href="#">550.1648(2), F.S.</a></u> Permitholders shall pay from any source, including charity performances, not less than 10% of tax credit from escheated tickets to a bona fide greyhound adoption program. <u><a href="#">550.1647, F.S.</a></u>	Maximum of five days. <u><a href="#">550.0351(1), F.S.</a></u> Permitholders are allowed to conduct two additional performances known as "Retired Jai Alai Players' Charity Day" for a fund to benefit retired jai alai players. <u><a href="#">550.0351(8), F.S.</a></u>	Maximum of five days. <u><a href="#">550.0351(1), F.S.</a></u> One additional scholarship day to tracks located in Hillsborough County for the benefit of Pasco-Hernando Community College. <u><a href="#">550.0351(6)(a) and 550.0351(6)(b), F.S.</a></u>	Maximum of five days. <u><a href="#">550.0351(1), F.S.</a></u>	Maximum of five days. <u><a href="#">550.0351(1), F.S.</a></u>

This matrix represents a summary of 2014 Statutes. Please refer to the cite noted by statutory topic for specific language governing pari-mutuel wagering.



STATUTE TOPIC	GREYHOUND	JAI ALAI	THOROUGHBRED	HARNESS	QUARTER HORSE
<b>TAX CREDITS &amp; EXEMPTIONS</b>					
<b>(excluding charity performances, unless otherwise noted)</b>	<p>Tax exemption of \$360,000 per state fiscal year, or \$500,000 for three permitholders that held a full live schedule in 1995, and closest to another state authorizing greyhound racing. <b><u>550.09514(1), F.S.</u></b></p> <p>Tax credit each state fiscal year equal to daily license fee on live races in previous state fiscal year. <b><u>550.0951(1)(a), F.S.</u></b></p> <p>Allows each permitholder that cannot utilize the full amount of the tax exemption or daily license fee tax credit, elect once per state fiscal year to transfer the unused portion to a greyhound permitholder acting as a host track for intertrack wagering. <b><u>550.0951(1)(b), F.S.</u></b></p> <p>Tax credit each state fiscal year in an amount equal to the amount remitted in escheated tickets in prior state fiscal year. <b><u>550.1647, F.S.</u></b></p>	<p>A permitholder that has incurred tax on handle and admissions that exceeds its operating earnings is entitled to credit the excess amount of taxes against its next ensuing meets. <b><u>550.09511(1)(b), F.S.</u></b></p> <p>Tax credit each state fiscal year equal to 25% of amount remitted in escheated tickets in prior state fiscal year. Funds equal to the tax credit shall be paid by the permitholder to the National Association of Jai Alai Frontons. <b><u>550.1646, F.S.</u></b></p> <p>\$30,000 per performance exemption if live handle during the preceding state fiscal year was less than \$15 million. <u>This exemption applies to charity performances.</u> <b><u>550.09511(2)(a)1., F.S.</u></b></p> <p>A permitholder conducting fewer than 100 performances in any calendar year shall pay to the state the same aggregate amount of daily license fees on live games, admissions tax, and tax on live handle as that paid during the most recent prior calendar year in which at least 100 live performances were conducted. <b><u>550.09511(4), F.S.</u></b></p>	<p>Permitholders are allowed a credit of up to 1% of the paid taxes for the previous taxable year. The credit, if taken, is applied against taxes on live handle due for a taxable year under this section, and is paid directly to the Jockeys' Guild by the permitholders. <b><u>550.09515(6), F.S.</u></b></p>		

This matrix represents a summary of 2014 Statutes. Please refer to the cite noted by statutory topic for specific language governing pari-mutuel wagering.

STATUTE TOPIC	STATUTE REFERENCE	SUMMARY
<b>FEEES</b>		
<b>Cardroom Table Fees</b>	849.086(5)(d), F.S.	Annual fee for each facility is \$1,000 for each table to be operated at the cardroom.
<b>TAXES</b>		
<b>Tax On Cardroom Gross Receipts</b>	849.086(13)(a), F.S.	Each cardroom operator shall pay a tax to the state of 10% of the cardroom operation's monthly gross receipts. Pursuant to Section 849.086(13)(c), F.S., one-half credited to Pari-Mutuel Wagering Trust Fund and one-half being credited to the General Revenue Fund.
<b>Tax On Admissions</b>	849.086(13)(b), F.S.	15% of admission charge, or 10 cents, whichever is greater, for entrance to the cardroom. This tax only applies if a separate admission fee is charged for entry into the cardroom facility. If a single admission fee is charged allowing entry to both or either the pari-mutuel facility and the cardroom facility, the tax is payable only once and shall be payable pursuant to Chapter 550.
<b>FINES</b>		
<b>Administrative Fine</b>	849.086(14)(c), F.S.	An administrative fine up to \$1,000 for each violation may be imposed on any person who has violated or failed to comply with the provisions of Section 849.086, F.S.
<b>ANNUAL DISBURSEMENT TO COUNTIES AND MUNICIPALITIES</b>		
<b>Annual Disbursement To Counties and Municipalities</b>	849.086(13)(h), F.S.	One-quarter of moneys deposited into the Pari-Mutuel Wagering Trust Fund shall, by October 1 of each year, be distributed to the local counties or municipalities where the approved cardrooms are located.

This matrix represents a summary of 2014 Statutes. Please refer to the cite noted by statutory topic for specific language governing operation of cardrooms.

STATUTE TOPIC	STATUTE REFERENCE	SUMMARY
<b>FEES</b>		
<b>Slot License Fee</b>	551.106(1)(a), F.S.	Annual fee for each slot machine facility is \$2 million paid with the initial license application and annual thereafter on the anniversary date of the issuance of the initial license.
<b>Compulsive or Addictive Gambling Prevention Program Fee</b>	551.118(3), F.S.	Annual fee for each slot machine facility is \$250,000 paid at the same time the annual license fee is due, and annual thereafter.
<b>TAXES</b>		
<b>Tax on Slot Revenue</b>	551.106(2)(a) and 551.106(3), F.S.	The tax rate on slot machine revenues is 35%. Payment for the tax on slot machine revenues shall be remitted by 3 p.m. on the 5th day of each calendar month for taxes imposed and collected for the preceding calendar month. If the 5th day of the calendar month falls on a weekend, payments shall be remitted by 3 p.m. the first Monday following the weekend.
<b>FINES</b>		
<b>Failure to Pay Slot Tax Fine</b>	551.106(4), F.S.	Up to \$10,000 for each day tax payment is not remitted timely.
<b>Civil Fine</b>	551.107(11), F.S.	The division may impose a civil fine of up to \$5,000 for each violation of this chapter or the rules of the division.
<b>False Statement Fine</b>	551.109(1), F.S.	Up to a \$10,000 fine or civil penalty for any person who knowingly makes or causes to be made, or aids, assists, or procures another to make a false statement in any report, disclosure, application, or any document required under Chapter 551, or any rule adopted under Chapter 551.
<b>Unauthorized Possession of Slot Machines Fine</b>	551.109(2), F.S.	Up to a \$10,000 administrative fine or civil penalty for any person who possesses a slot machine without the license required by Chapter 551, or who possesses a slot machine at any location other than at the slot machines licensee's facility.
<b>PENALTIES</b>		
<b>Slot Machine Licensee Civil Penalties</b>	551.117, F.S.	Up to a \$100,000 civil penalty for each count or separate offense against the slot machine licensee for violation of Chapter 551, or any rule adopted by the division.

This matrix represents a summary of 2014 Statutes. Please refer to the cite noted by statutory topic for specific language governing slot operations.