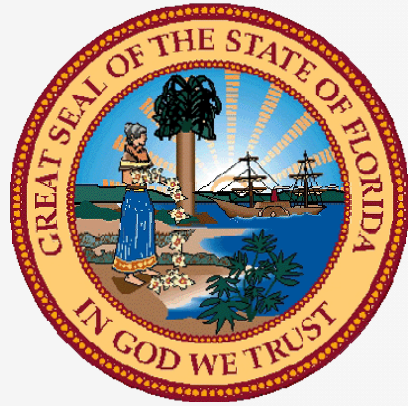


Florida Department of Business and Professional Regulation

Division of Pari-Mutuel Wagering

85th Annual Report
Fiscal Year 2015-2016



Rick Scott
Governor

Matilde Miller
Interim Secretary

Tony Glover
Director

www.myfloridalicense.com/dbpr/pmw

2601 Blair Stone Road
Tallahassee, Florida 32399
Ph: 850.488.9130

**DEPARTMENT OF BUSINESS AND PROFESSIONAL REGULATION
 DIVISION OF PARI-MUTUEL WAGERING
 COMPREHENSIVE ANNUAL REPORT
 FISCAL YEAR ENDING JUNE 30, 2016
www.myfloridalicense.com/dbpr/pmw**

INTRODUCTORY SECTION

Overview and Explanation of Report Terminology	2
Division Overview.....	3
Events Shaping the 2015/2016 Racing/Gaming Season in Florida	6

STATISTICAL SECTION

Pari-Mutuel Statistical Data

Fiscal Years Comparative Data	7
Graphs - Historical Pari-Mutuel Wagering Activity	8
Components of Pari-Mutuel Handle From Performances	11
Total State Revenue From Performances	12
Total Regular and Charity/Scholarship Handle.....	13
Total Intertrack Wagering Handle by Guest.....	14
Charity and Scholarship Performances, Racing Scholarship Trust Fund, and Abandoned Winning Tickets.....	17

Cardroom Statistical Data

Cardroom Comparative Data.....	18
Components of Cardroom Revenue by Association.....	19

Slot Statistical Data

Slot Comparative Data.....	20
Revenue per Machine Compared to Average Number of Machines by Month.....	21

DATA BY PERMITHOLDER/FACILITY

Pari-Mutuel Map by Permitholder/Facility.....	24
Contact and Operating Information by Permitholder/Facility.....	25
Promotional Programs for Florida-Bred Horses.....	30
Drug Positives Statistical Data.....	31

FINANCIAL STATEMENTS

Summary of State Revenue from Cardroom, Pari-Mutuel, Slot Activities, and Indian Gaming Compact.....	32
Balance Sheet - Special Revenue Fund.....	33
Statement of Revenue, Expenditures & Changes in Fund Balance - Budget & Actual – Special Revenue Fund.....	34

CARDROOM, PARI-MUTUEL, AND SLOT STATUTE MATRIX

Summary of Pari-Mutuel Handle Distribution.....	35
Summary of Cardroom Distribution.....	38
Summary of Slot Distribution.....	39

INTRODUCTION

OVERVIEW

This annual report encompasses the fiscal year which began July 1, 2015, and ended June 30, 2016. This is the 85th annual report in the series. The first annual report was issued for Fiscal Year 1931/1932, the initial year of legalized pari-mutuel wagering. In Florida, pari-mutuel wagering is authorized for horse racing, harness horse racing, quarter horse racing, greyhound racing, jai alai games, and cardroom poker games. Additionally, slot machine gaming at pari-mutuel facilities is authorized in Broward and Miami-Dade counties. Florida is one of the primary pari-mutuel states in the nation, and is the leading state in greyhound racing, as well as a major horse racing state. Florida is also the only state in the United States where live jai alai games are conducted. As of June 30, 2016, there were 30 pari-mutuel facilities located throughout the state, with one of the facilities holding both limited intertrack wagering and pari-mutuel wagering. This annual report, which is required by Florida law, is intended to inform the Governor, the Legislature, the industry, and other interested parties of wagering activities at authorized pari-mutuel facilities. The report is organized into five primary sections:

1. **Introductory Section** - An overview of the Division of Pari-Mutuel Wagering and a report of events that occurred impacting the division's oversight of permits or events that affected the operation of facilities.
2. **Statistical Section** – Details various cardroom, pari-mutuel, and slot statistical data by individual racing association or fronton.
3. **Data by Association/Facility** – Includes a map showing location of each association/permit that operated during the 2015/2016 Fiscal Year, and operating information by association/permit, promotional programs for Florida-bred horses and impermissible substance positives statistical data.
4. **Financial Section** - Official financial statements of the Division of Pari-Mutuel Wagering.
5. **Statute Matrix** - A table that summarizes the statutes regarding the taxes and fees applicable to pari-mutuel wagering and cardroom activity. It also includes a summary of the statutes regarding the taxes, fees, fines, and penalties with respect to slot machine gaming.

EXPLANATION OF REPORT TERMINOLOGY

Florida law requires intertrack wagers to be combined with the wagering pools of the host or the broadcasting Florida track or fronton. The law also requires that the host take-out on intertrack wagers be the same as for on-track wagers; however, the distribution of the take-out may be different. The tax structure for on-track and intertrack wagering is explained in more detail in the statute matrix section.

Pursuant to Section 550.002(13), Florida Statutes, handle is defined as the aggregate contributions to pari-mutuel pools. For purposes of this report, the four types of handle detailed in this report are as follows:

- Live Ontrack: Handle from live races/games at the track/fronton.
- Simulcast: Handle from races/games originating from out-of-state and broadcast to a Florida track/fronton.
- Intertrack: Handle from where a Florida track/fronton (acting as host) broadcast live races/games to other Florida tracks/frontons.
- Intertrack Simulcast: Handle from rebroadcasting of simulcast signals received by a Florida track/fronton to other Florida tracks/frontons.

All intertrack and intertrack simulcast handle is detailed by the host permitholder in this report. These schedules reflect combined wagering statistics for all guest facilities that received broadcasts and conducted wagering and included in the wagering pools of the host. For host permitholders, a summary of intertrack handle components for each guest is shown in the statistical section of this report. The schedules of intertrack wagering handle by guest include data on wagers from intertrack handle and intertrack simulcast handle. Any paid attendance, admission tax, purses paid, or players' awards paid are detailed in the data by association/permit section of the report.

THE DIVISION OF PARI-MUTUEL WAGERING

The Division of Pari-Mutuel Wagering is a program area of the Department of Business and Professional Regulation within the Executive Branch of Florida's government. The division is charged with regulating Florida's pari-mutuel, cardroom and slot machine gaming industries, as authorized by Chapters 550, 551, and Section 849.086, Florida Statutes, as well as collecting and safeguarding associated revenues due to the state. Authorized pari-mutuel events include harness racing, quarter horse racing, thoroughbred racing, greyhound racing, and jai alai. Pari-Mutuel Wagering was originally authorized by the Legislature in 1931. Since that time, the division has evolved from a racing commission into a professional regulatory organization overseeing a complex and dynamic industry located throughout the state. Additionally, the Division of Pari-Mutuel Wagering was designated by the Florida Legislature as the State Compliance Agency with the authority to carry out the state's oversight responsibilities in accordance with the provisions outlined in the Compact between the State of Florida and the Seminole Tribe of Florida.

OFFICE OF THE DIRECTOR

The Office of the Director provides leadership, oversight, and administration of the six functional areas within the division. Specific responsibilities include budget planning, rule promulgation, policy development, legislative analysis of proposed legislation, strategic planning, fleet management, staff development and enforcement of administrative actions. Additionally, the Office of the Director ensures that all areas of the division operate in a cooperative effort to ensure efficient regulatory oversight of the industry.

The division's structure includes six functional areas which act under the management of the Office of the Director. These functional areas include Revenue and Financial Analysis, Auditing, Operations, Investigations, Slot Operations, and State Compliance Agency. Each area focuses on a different aspect of regulation within the cardroom, pari-mutuel and slot machine gaming industry, as well as the state's Compact with the Seminole Tribe of Florida, in an effort to protect state revenues and maintain the public's confidence in the integrity of the wagering activity. Additionally, the Office of the Director processes applications for the issuance of all pari-mutuel permitholder Annual Operating Dates Licenses, Cardroom Operator Licenses, and Slot Machine Licenses to authorized facilities.

OFFICE OF OPERATIONS

All individuals and businesses who work or conduct business at a racetrack, fronton, cardroom, or slot machine facility and who have access to wagers, restricted areas, and/or racing animals, must obtain an occupational license issued by the division. Every racing and cardroom occupational licensee is fingerprinted upon initial licensure and every three years thereafter; and every slot machine occupational licensee is fingerprinted upon initial licensure and every three years thereafter. Each set of fingerprints is submitted electronically to the Florida Department of Law Enforcement and the Federal Bureau of Investigation for processing. During Fiscal Year 2015/2016, Operations' Licensing Section processed 20,155 occupational license applications for businesses and individuals, of which 12,294 were related to cardroom operations; 3,691 were related to racing operations; and 4,170 were related to slot machine operations.

The Office of Operations is also responsible for ensuring that the day-to-day operation of races and games is conducted in accordance with Florida's pari-mutuel statutes and rules. The State Stewards monitor each horserace and conduct inquiries and hearings for alleged violations of the state's pari-mutuel statutes and rules. The Stewards and Hearing Officers issued 36 rulings and 292 consent orders; assessed fines totaling \$107,655; and imposed 10 license suspensions for violations during Fiscal Year 2015/2016.

Operations' staff collects urine and blood samples from racing animals which are sent to the University of Florida, College of Medicine Racing Laboratory for analysis. The Racing Laboratory performs its services under an annual contract with the division. State veterinarians and veterinary assistants collected 76,219 samples that included 59,274 greyhound urine samples and 16,945 horse urine and blood samples. Additionally, division investigators submitted 2 investigative samples during Fiscal Year 2015/2016. There were 361 positive findings of impermissible substances in the samples collected.

OFFICE OF AUDITING

The Office of Auditing is responsible for conducting various audits to ensure the integrity of wagering activity and protect the wagering public by ensuring that cardroom, pari-mutuel, and slot machine wagering is conducted in compliance with the Florida Statutes and Florida Administrative Code. Such compliance issues include pari-mutuel broadcast exchanges; verification that takeout/commissions are consistent with notification requirements; interstate wagering restrictions; identification of fraudulent activity; verification that statutory accounting procedures are utilized; oversight of the commingling of wagering pools; transmission of pari-mutuel information; proper payments to winning pari-mutuel patrons; approval of totalisator security plans and software upgrades. Additionally, the auditing staff maintains primary oversight for cardroom operations, which includes: auditing internal control procedures; auditing jackpot accounts; monitoring daily operations; coordinating inspections; and auditing for compliance. The auditing team is responsible for communicating with the licensed totalisator companies and for the input of pari-mutuel handle and wagering information into the division's Central Monitoring System (CMS).

During Fiscal Year 2015/2016, the auditing team conducted 19 greyhound purse audits, 19 greyhound adoption proceeds audits, 30 mutuels audits, 26 escheat audits, 23 cardroom audits, eight slot audits, three breeders' awards audits and 28 totalisator system malfunction reports. Auditing's cardroom coordinators processed 226 internal control revisions.

OFFICE OF INVESTIGATIONS

The Office of Investigations examines statutory and rule violations that occur at pari-mutuel facilities, cardrooms, and slot machine gaming locations. Investigative staff is responsible for investigating Class I drug positives analyzed and identified by the University of Florida, College of Medicine Racing Laboratory and deaths of racing animals that occur at pari-mutuel facilities. [The investigations include patron complaints, complaints of animal cruelty, and the use of performance altering medications and/or illegal substances during races.] A case may result in issuance of a warning letter, consent order, administrative fine, license suspension, license revocation, hearing before a designated hearing officer or referral to either regulatory or law enforcement agencies for criminal prosecution. During Fiscal Year 2015/2016, there were 618 investigations conducted.

The investigation staff also conducts background examinations of potential permit holders which involves an in-depth review of the applicant's financial records in order to ensure compliance with Sections 550.054, 550.1815, and 849.086, Florida Statutes. Additionally, investigators perform background reviews of Pari-Mutuel Wagering Occupational License requests from applicants with criminal records requesting a waiver from the Division Director in accordance with Section 550.105, Florida Statutes.

The investigation staff also conducted 5,066 in-depth inspections of pari-mutuel and slot machine facilities, including cardrooms, greyhound kennels and horse stables; both prior to opening as well as throughout the operating year.

OFFICE OF SLOT OPERATIONS

The Slot Operations' staff is responsible for overseeing state personnel located at each of the four pari-mutuel facilities in Broward County and each of the four pari-mutuel facilities in Miami-Dade County that have slot machine gaming. To ensure the integrity of slot machine gaming activity, the Slot Operations' staff oversees the day-to-day operations at the slot machine facilities, performs daily revenue reconciliations, verifies that every slot machine has been certified by an independent testing laboratory, issues slot machine occupational licenses to individuals, and ensures slot machine gaming activity is in compliance with the requirements of Chapter 551, Florida Statutes, Chapter 61D-14, Florida Administrative Code, as well as the internal controls of the individual facilities.

During Fiscal Year 2015/2016, the Slot Operations' staff completed 5,830 inspections. Of those, 117 items were found to be non-compliant, of which four were turned over to Investigations and to the Department's Office of the General Counsel for formal proceedings. Slot machine facilities were notified of 117 observations so that appropriate internal action, including employee disciplinary action, advanced training and/or re-training of facility personnel could occur. There were 14 individual and facility Consent Orders issued at the regional level totaling \$5,450 in fines or final warning notices.

There were 1,062 shipments of authorized slot machines and components, which required the verification of 3,058 slot machines and 6,067 components. The Slot Operations' staff authorized and monitored 11,342 slot machine conversions, denomination and/or game theme changes, slot machine relocations and other related slot machine changes.

OFFICE OF REVENUE AND FINANCIAL ANALYSIS

The Revenue and Financial Analysis staff is responsible for safeguarding and accounting for state revenues in accordance with Florida Statutes and the Florida Administrative Code, as it relates to cardroom, pari-mutuel and slot gaming activities. The staff develops revenue projections for the Revenue Estimating Conferences, maintains cash flow statements for timely transfer to the State's General Revenue Fund and to the Education Enhancement Trust Fund, provides oversight of the division's budget, develops the annual report, and determines fiscal impacts on proposed legislation impacting the industry.

During Fiscal Year 2015/2016, \$236,131,785 in state revenues pertaining to cardroom, pari-mutuel and slot machine gaming were collected. The Revenue and Financial Analysis staff also reconciled 671 permitholder monthly remittance reports, conducted 33 charity day audits and 44 uniform annual report audits. The Revenue and Financial Analysis staff compiles statistical information for cardroom, pari-mutuel and slot machine gaming, and performs analyses requested by the department, the Executive Office of the Governor, the Legislature and the industry.

STATE COMPLIANCE AGENCY

The Gaming Compact between the Seminole Tribe of Florida and the State of Florida, 75 FR 38833, was executed by the Governor on April 7, 2010, and ratified by the United States Department of the Interior on July 7, 2010. Pursuant to § 285.710, Florida Statutes, the Division of Pari-Mutuel Wagering was designated by the Florida Legislature as the State Compliance Agency with the authority to carry out the State's oversight responsibilities in accordance with the provisions outlined in the Compact. The Seminole Tribe of Florida operates seven casinos located in Broward, Hillsborough, Collier, Glades and Hendry counties.

During Fiscal Year 2015/2016, the State Compliance Agency completed 76 inspections of tribal gaming facilities spanning over 724 man hours. Additionally, \$272,840,413, in revenue sharing with the Tribe was collected. Of this, \$7,670,819, was distributed to local governments, including both counties and municipalities, as required by § 285.710, Florida Statutes.

A similar Compact does not exist with the Miccosukee Tribe, and therefore they continue to operate exclusively under Federal jurisdiction. For additional information on the Miccosukee's gaming operations, contact the National Indian Gaming Commission, www.nigc.gov, or the United States Department of Interior, 1441 L Street N.W., Suite 9100, Washington, D.C. 20005-3584, Telephone 202.632.7003.

Events Shaping the 2015/2016 Racing/Gaming Season in Florida

- During the 2015 Legislative Session, House Bill (HB) 239 "Medication & Testing of Racing Animals" passed both the House and Senate with a favorable vote. Subsequently, the bill was sent to the Governor on May 18, 2015. The Governor signed the bill into law on June 2, 2015. Legislation took effect July 1, 2015 requiring the Florida Division of Pari-Mutuel Wagering to adopt rules establishing the conditions of use and maximum concentration of medications, drugs, and naturally occurring substances identified in the Controlled Therapeutic Medication Schedule (CTMS) for race horses, Version 2.1, revised April 17, 2014. The new rules were adopted on January 10, 2016.
 - A key provision of the new regulations was the elimination of the requirement for Thin Layer Chromatography (TLC) to be used to screen samples for the presence of Class IV and V medications in samples taken from race horses. Additionally, the new laws protect the division from prosecution if the quantity of the racehorse split sample used for confirmation of a positive is an insufficient amount to test.
 - Another significant change due to the new legislation permitted only the use of furosemide (also known as Salix or Lasix) on race day. Use of prednisolone sodium succinate, commonly called Solu-Delta Cortef, an anti-inflammatory drug, is no longer permitted. Additionally, the testing medium for phenylbutazone in horses has been eliminated.
 - The new regulations also allowed the division to solicit input from the Department of Agriculture and Consumer Services (DACS) for adopting of rules that specify normal physiological concentrations of naturally occurring substances in the natural untreated animal and rules that specify acceptable levels of environmental contaminants and trace levels of substances in test samples.
- Dania Entertainment Center, LLC d/b/a The Casino @ Dania Beach reopened for business on January 13, 2016, after renovation.
- Casino Miami Jai Alai closed their cardroom in May 2016.
- Hamilton Jai Alai relinquished their permit in July 2016, per stipulation and Consent Order filed on October 21, 2015.

STATISTICAL SECTION

FISCAL YEARS COMPARATIVE DATA

Beginning with the 1931/1932 Fiscal Year, the state began collecting taxes on pari-mutuel wagering. In most recent years, pari-mutuel handle has steadily declined. During that initial year, the pari-mutuel industry operated 462 racing days in Florida, which resulted in state revenue of \$737,301; total paid attendance of 1,157,161; and total pari-mutuel handle of \$17,365,424.

Since Fiscal Year 1931/1932, approximately \$75.5 billion in pari-mutuel handle wagered resulted in \$4.38 billion in state revenue. This fiscal year, the pari-mutuel industry operated 3,416 racing days, which resulted in state revenue of \$11,832,484; total paid attendance of 348,081; and total pari-mutuel handle of \$740,622,948.

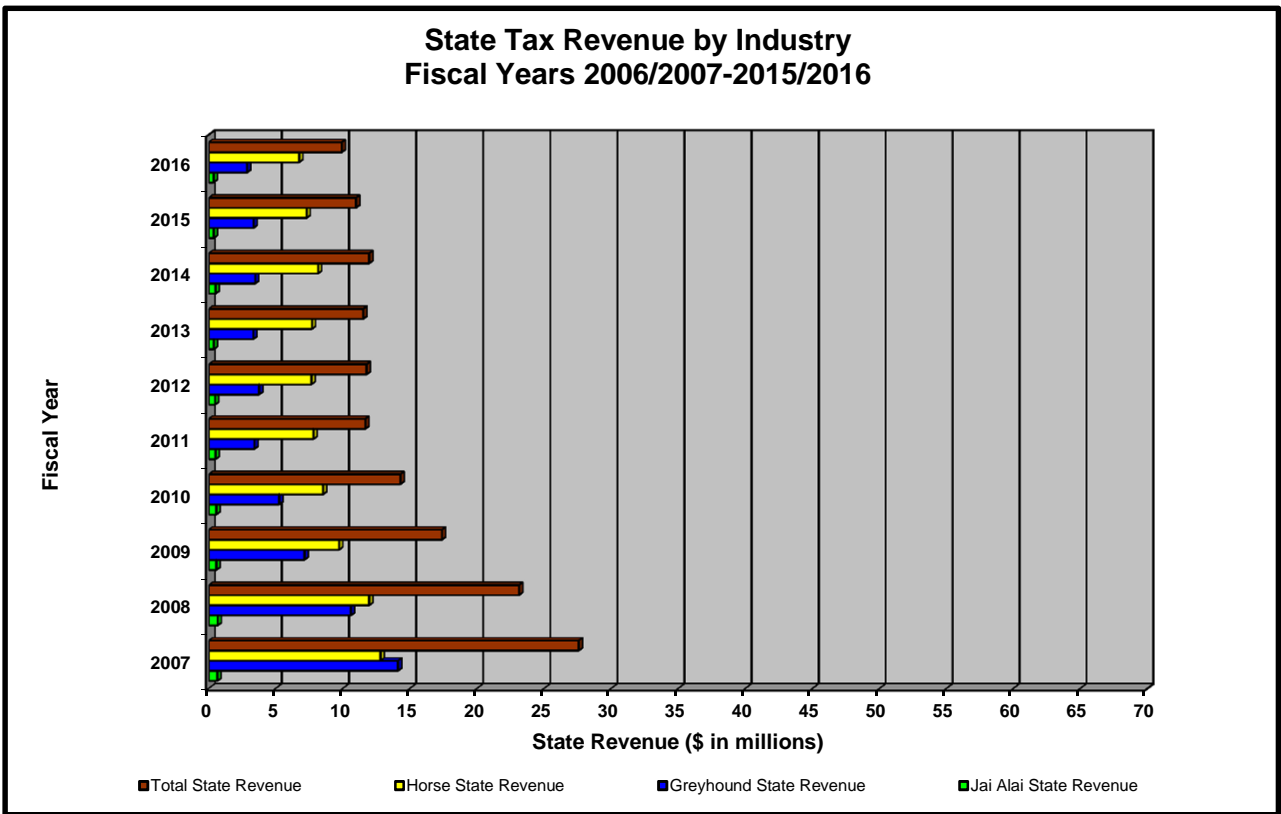
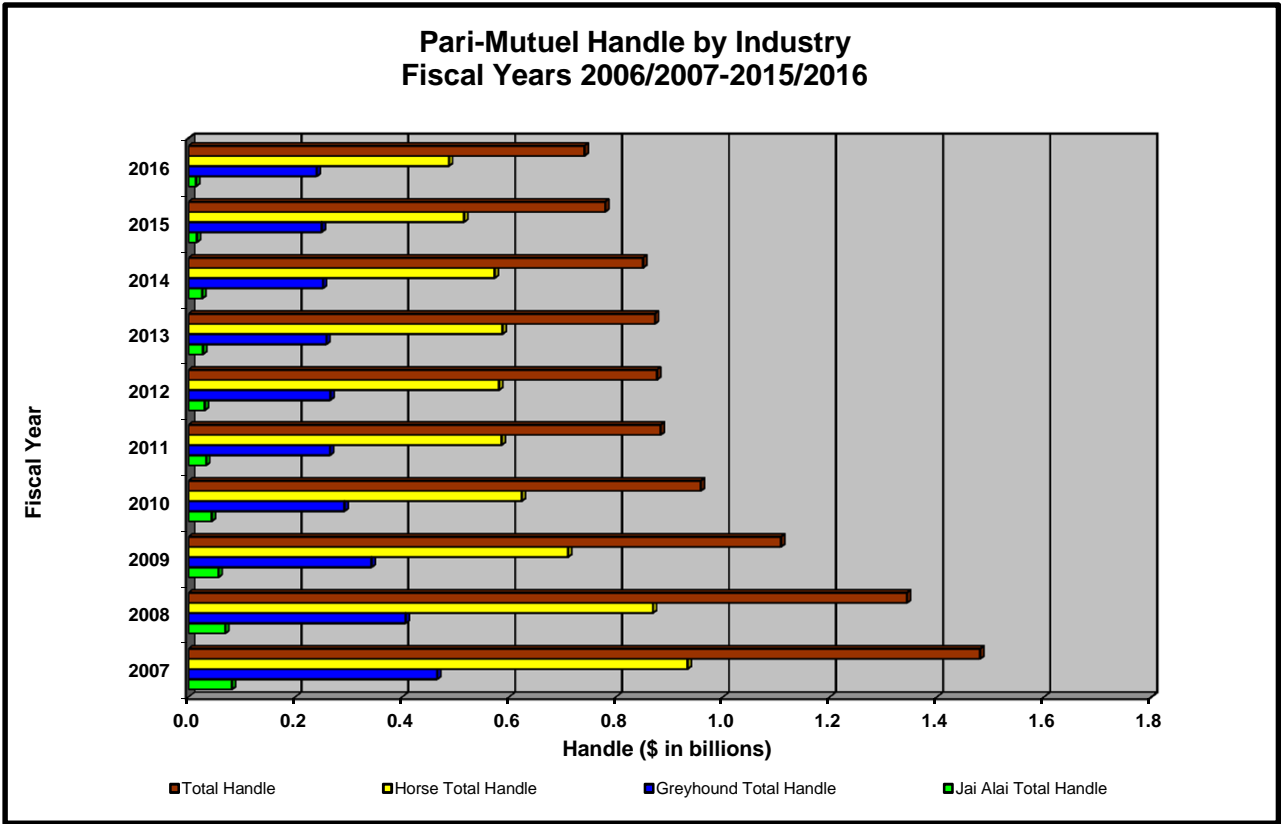
Over the last 10 years, pari-mutuel wagering has experienced a 49.9 percent decline in handle, and total state revenue has decreased 60.8 percent, along with a 38.9 percent decrease in the number of racing days. Shown below is a summary of pari-mutuel handle and state revenue for Fiscal Years 2006/2007 through 2015/2016.

PARI-MUTUEL HANDLE AND STATE REVENUE SUMMARY

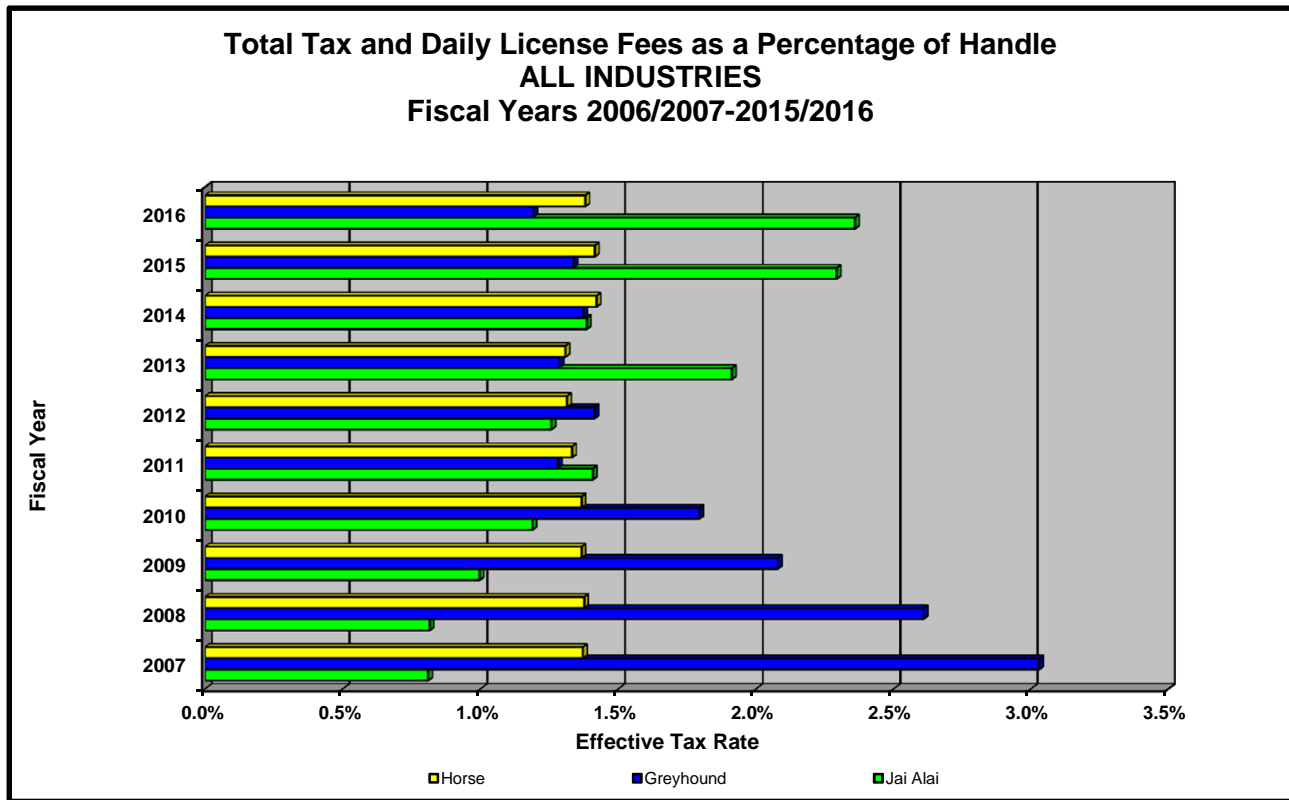
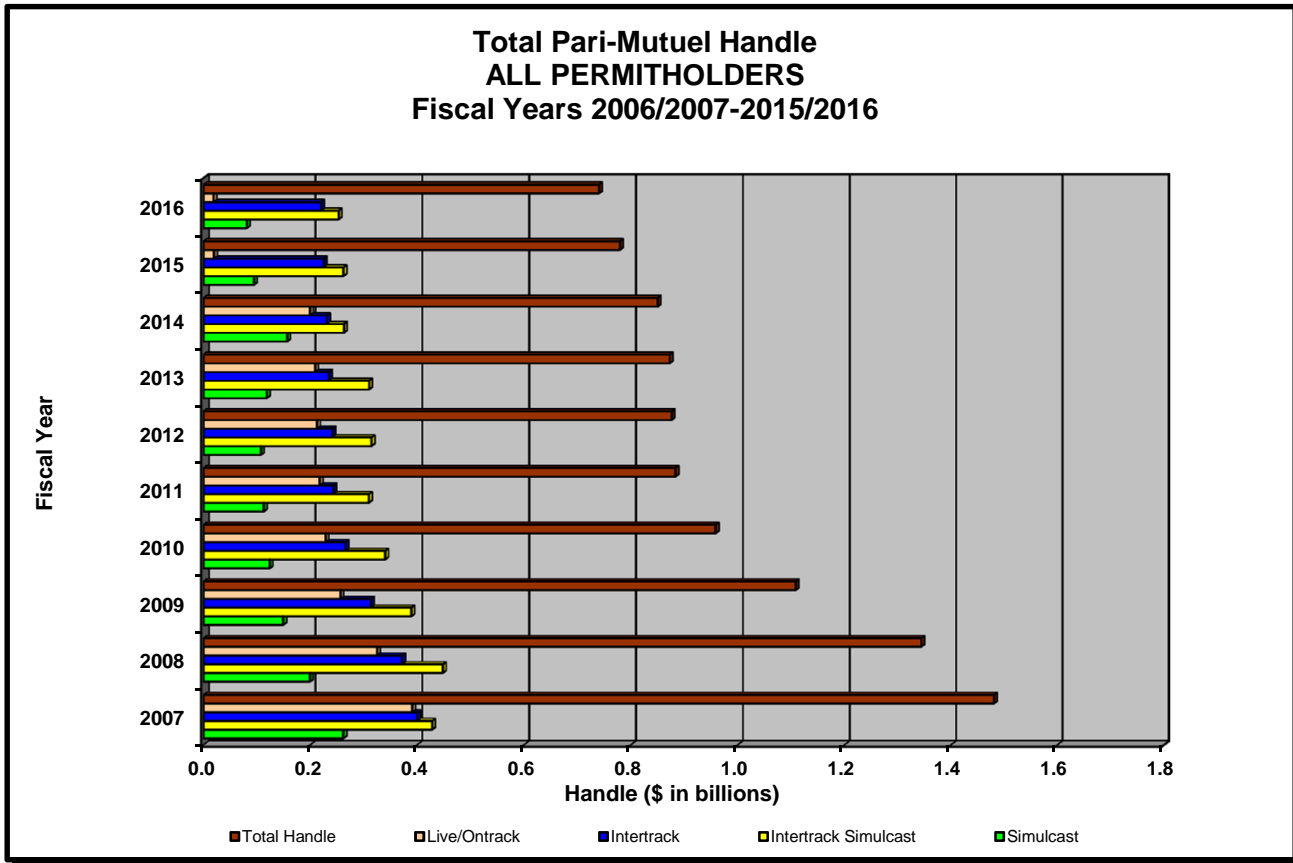
<i>Fiscal Year</i>	<i>Number of Racing Days</i>	<i>Total Paid Attendance</i>	<i>Total Pari-Mutuel Handle</i>	<i>Total State Revenue ⁽¹⁾</i>	<i>State Revenue as a Percent of Handle</i>
2006/2007	5,592	2,351,126	\$1,480,427,370	\$30,214,151	2.04%
2007/2008	4,857	1,419,748	\$1,343,912,504	\$25,657,727	1.91%
2008/2009	4,364	722,699	\$1,108,401,006	\$19,814,027	1.79%
2009/2010	4,167	614,889	\$ 958,537,395	\$16,706,611	1.74%
2010/2011	3,633	507,804	\$ 883,381,429	\$13,640,020	1.54%
2011/2012	3,602	469,497	\$ 876,146,485	\$13,802,723	1.58%
2012/2013	3,628	430,707	\$ 872,272,660	\$13,200,709	1.51%
2013/2014	3,582	383,864	\$ 850,136,735	\$13,785,681	1.62%
2014/2015	3,441	377,660	\$ 779,336,136	\$12,589,460	1.62%
2015/2016	3,416	348,081	\$ 740,622,948	\$11,832,484	1.60%

(1) Beginning 2006/2007, this figure includes state revenue from pari-mutuel performances and other state revenue, and does not include state revenue from cardroom and slot operations.

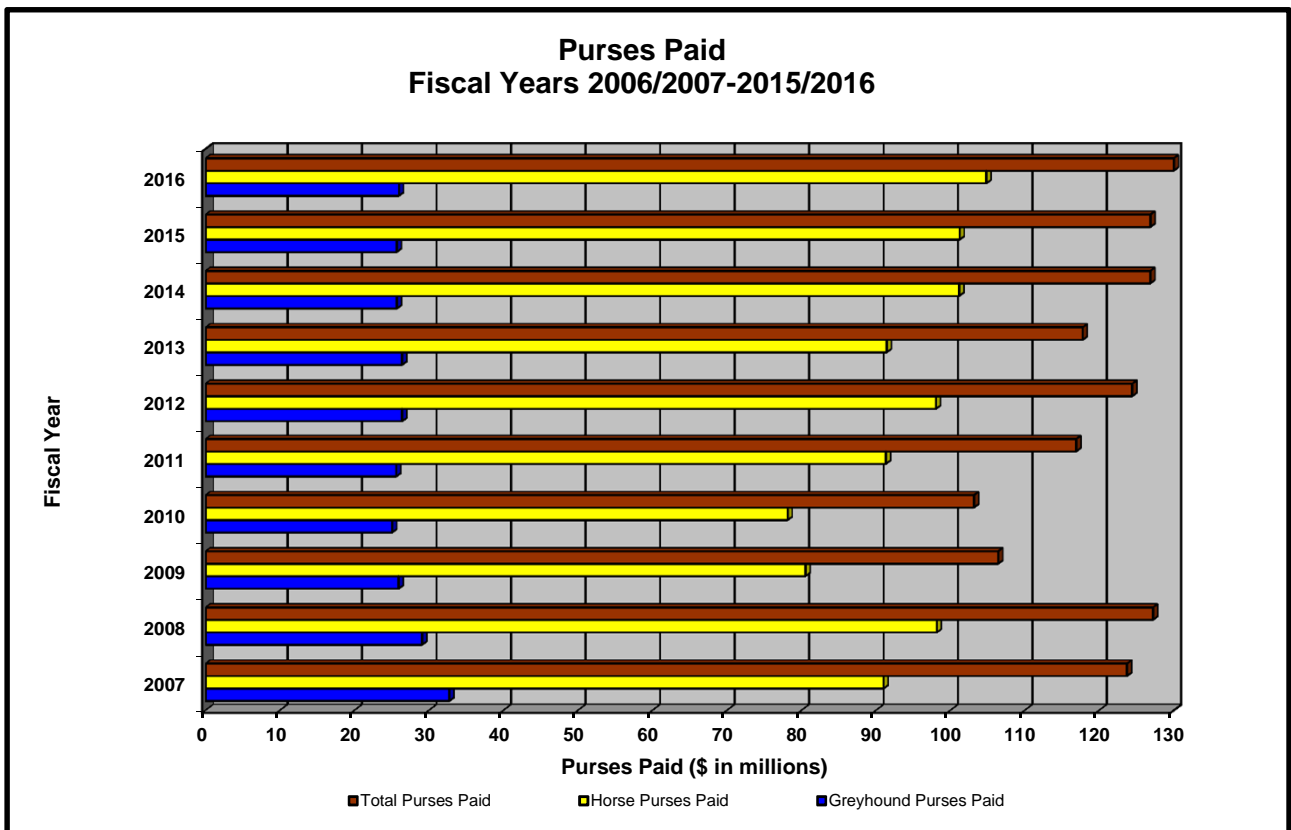
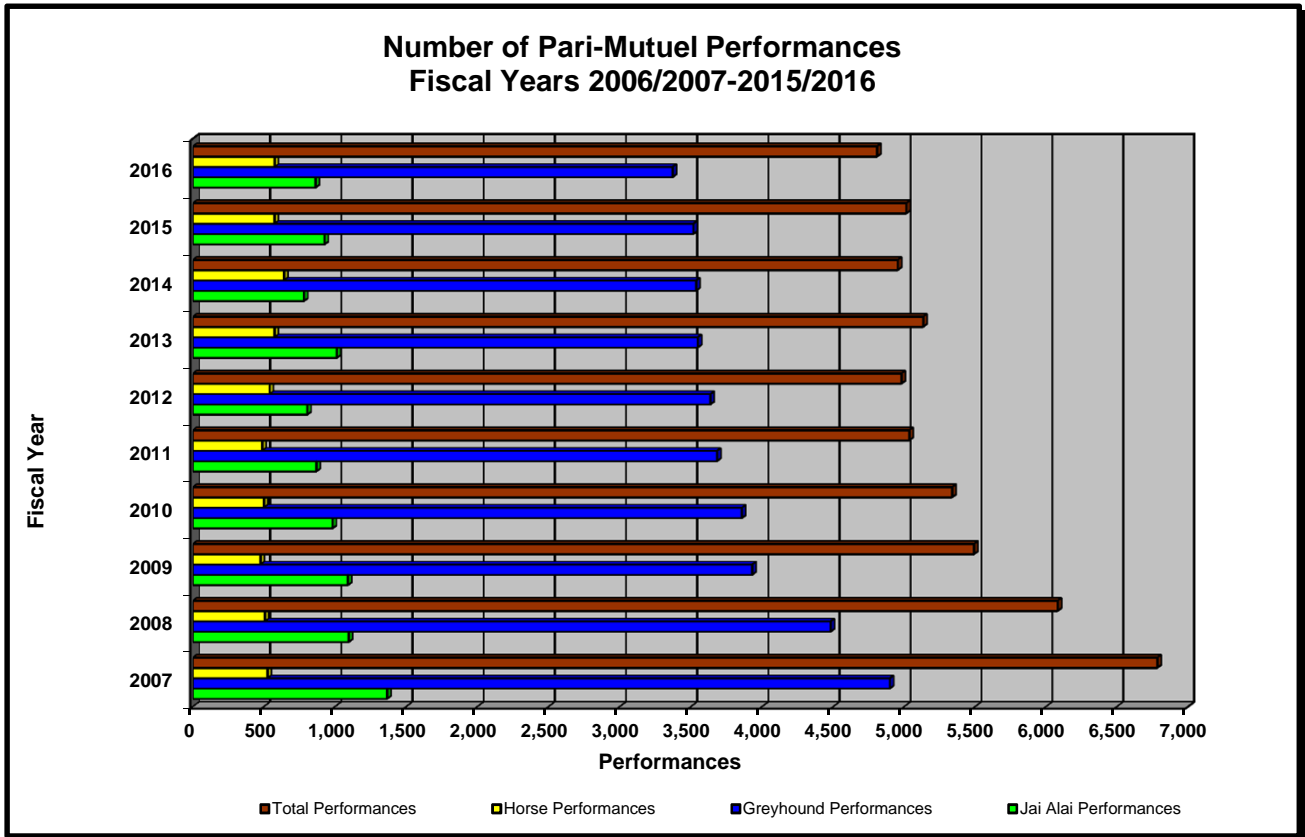
HISTORICAL PARI-MUTUEL WAGERING ACTIVITY



HISTORICAL PARI-MUTUEL WAGERING ACTIVITY



HISTORICAL PARI-MUTUEL WAGERING ACTIVITY



COMPONENTS OF PARI-MUTUEL HANDLE FROM PERFORMANCES

Fiscal Year 2015/2016

	Daily License Fee	Tax on Handle	Total Paid To Charities	Permitholder Revenues From Pari-Mutuel Handle	Public Pool	Total Handle
Greyhound Racing Permitholders						
Daytona Beach Kennel Club, Inc.	\$18,740	\$3,583	\$33,186	\$2,336,547	\$6,268,932	\$8,660,988
Derby Lane (St. Petersburg Kennel Club, Inc.)	87,600	293,312	121,567	4,436,365	15,826,341	20,765,185
Ebro Greyhound Park	1,200	0	710	452,485	969,368	1,423,763
Flagler Dog Track	54,681	205,724	64,380	3,921,411	14,768,054	19,014,250
H&T Gaming, Inc., d/b/a Mardi Gras Racetrack	29,080	117,802	42,439	1,941,393	7,688,857	9,819,571
Jacksonville Kennel Club, Inc.	16,800	6,227	79,169	2,398,881	8,034,184	10,535,261
License Acquisitions, LLC, d/b/a Palm Beach Greyhound Racing	39,440	91,113	70,124	3,019,910	10,385,226	13,605,813
Mardi Gras Racetrack and Gaming Center	13,580	14,508	47,156	1,674,987	6,247,877	7,998,108
Melbourne Greyhound Park, LLC	4,484	430	0	39,813	101,139	145,866
Naples-Ft. Myers Greyhound Track	90,195	179,612	44,942	3,412,818	12,465,985	16,193,552
Orange Park Kennel Club, Inc.	24,000	29,050	72,195	2,152,134	7,301,371	9,578,750
Palm Beach Kennel Club	130,800	462,800	95,671	9,272,550	32,114,189	42,076,010
Penn Sanford, LLC, d/b/a Sanford-Orlando Kennel Club	16,560	20,990	19,463	2,002,858	7,253,196	9,313,067
Pensacola Greyhound Racing, LLP	35,200	12,767	0	199,174	739,694	986,835
SOKC, LLC, d/b/a Sanford-Orlando Kennel Club	39,680	78,685	19,934	2,578,968	8,706,592	11,423,859
Sarasota Kennel Club, Inc.	8,240	0	35,590	1,878,006	5,914,764	7,836,600
St. Johns Greyhound Park	87,040	275,526	84,051	4,890,972	17,174,005	22,511,594
Tampa Greyhound Track	70,894	241,491	99,125	4,375,169	15,211,464	19,998,143
West Volusia Racing, Inc.	30,340	16,907	31,561	2,167,685	5,782,802	8,029,295
Total Greyhound Permitholders	\$798,554	\$2,050,527	\$961,263	\$53,152,126	\$182,954,040	\$239,916,510
Jai Alai Permitholders						
Dania Jai Alai	\$49,280	\$0	\$332	\$650,300	\$2,119,034	\$2,818,946
Dania Summer Jai Alai	19,600	0	520	220,991	728,427	969,538
Ft. Pierce Jai Alai	12,800	0	0	1,653	41,789	56,242
Hamilton Jai Alai and Poker ^(A)	69,120	0	0	(69,120)	0	0
Miami Jai Alai	73,920	0	7,768	1,202,252	3,658,863	4,942,803
Ocala Poker and Jai Alai	13,120	0	0	(13,115)	21	26
Orlando Jai Alai	12,800	0	0	(12,761)	2	41
Summer Jai Alai	75,360	0	8,044	1,222,625	3,726,720	5,032,749
Total Jai Alai Permitholders	\$326,000	\$0	\$16,664	\$3,202,825	\$10,274,856	\$13,820,345
Thoroughbred Racing Permitholders						
Calder Race Course, Inc. ^(B)	\$42,000	\$109,053	\$183,453	\$4,166,841	\$17,644,029	\$22,145,376
Gulfstream Park Thoroughbred After Racing Program, Inc. ^(B)	43,800	150,531	127,756	4,414,030	18,090,645	22,826,762
Gulfstream Park Racing Association, Inc. ^(B)	291,900	3,656,121	308,316	53,870,765	223,222,998	281,350,100
Tampa Bay Downs, Inc.	253,200	1,018,943	63,368	16,333,665	66,702,603	84,371,779
Tropical Park, LLC.	49,200	156,769	260,127	5,943,471	24,211,069	30,620,636
Total Thoroughbred Permitholders	\$680,100	\$5,091,417	\$943,020	\$84,728,772	\$349,871,344	\$441,314,653
Harness Racing Permitholders						
Isle Casino and Racing at Pompano Park	\$309,100	\$494,863	\$11,092	\$8,823,799	\$34,013,040	\$43,651,894
Quarter Horse Racing Permitholders						
Gretna Racing, LLC	\$32,000	\$1	\$0	(\$31,990)	\$62	\$73
Hamilton Downs Horsetrack, LLC	16,000	0	0	(\$16,000)	0	0
Ocala Breeders' Sales Company, Inc.	200	145	0	\$4,518	18,689	23,552
South Florida Racing Association, LLC (Hialeah Park)	33,200	21,970	0	\$328,181	1,505,578	1,888,929
South Marion Real Estate Holdings, LLC	16,000	70	0	(\$14,884)	5,806	6,992
Total Quarter Horse Permitholders	\$97,400	\$22,186	\$0	\$269,825	\$1,530,135	\$1,919,546
TOTAL FOR ALL PERMITHOLDERS	\$2,211,154	\$7,658,993	\$1,932,039	\$150,177,347	\$578,643,415	\$740,622,948

(A) Daily license fees and taxes were not collected. Permitholder relinquished jai alai permit.

(B) Daily license fees and taxes reported above are amounts due from performances held and do not equal amounts collected/paid.

TOTAL STATE REVENUE FROM PERFORMANCES

Fiscal Year 2015/2016	LIVE			SIMULCAST			ITW	ITW SIM	CHARITY PERFORMANCES	TOTAL TAXES AND FEES COLLECTED ^(A)
	Tax on Handle	Daily License Fee	Total Live Taxes and Fees Collected	Tax on Handle	Daily License Fee	Total Simulcast Taxes and Fees Collected	Tax on Handle	Tax on Handle	Daily License Fee	
Greyhound Racing Permitholders										
Daytona Beach Kennel Club, Inc.	\$1,526	\$2,400	\$3,926	\$142	\$500	\$642	\$1,915	\$0	\$15,840	\$22,323
Derby Lane (St. Petersburg Kennel Club, Inc.)	136,623	73,200	209,823	0	0	0	156,689	0	14,400	380,912
Ebro Greyhound Park	0	0	0	0	0	0	0	0	1,200	1,200
Flagler Dog Track	7,463	15,121	22,584	19,233	26,000	45,233	16,920	162,108	13,560	260,405
H&T Gaming, Inc., d/b/a Mardi Gras Racetrack	1,661	2,880	4,541	37,892	16,500	54,392	4,238	74,011	9,700	146,882
Jacksonville Kennel Club, Inc.	2,038	2,400	4,438	0	0	0	4,189	0	14,400	23,027
License Acquisitions, LLC, d/b/a Palm Beach Greyhound Racing	33,572	25,200	58,772	0	0	0	57,541	0	14,240	130,553
Mardi Gras Racetrack and Gaming Center	2,636	2,880	5,516	1,920	1,000	2,920	3,947	6,005	9,700	28,088
Melbourne Greyhound Park, LLC	430	4,484	4,914	0	0	0	0	0	0	4,914
Naples-Ft. Myers Greyhound Track	115,531	80,275	195,806	0	0	0	64,081	0	9,920	269,807
Orange Park Kennel Club, Inc.	12,239	9,600	21,839	0	0	0	16,811	0	14,400	53,050
Palm Beach Kennel Club	191,306	116,400	307,706	0	0	0	271,494	0	14,400	593,600
Penn Sanford, LLC, d/b/a Sanford-Orlando Kennel Club	12,966	9,360	22,326	0	0	0	8,024	0	7,200	37,550
Pensacola Greyhound Racing, LLP	12,767	35,200	47,967	0	0	0	0	0	0	47,967
SOKC, LLC, d/b/a Sanford-Orlando Kennel Club	41,090	32,560	73,650	0	0	0	37,595	0	7,120	118,365
Sarasota Kennel Club, Inc.	0	0	0	0	0	0	0	0	8,240	8,240
St. Johns Greyhound Park	120,492	72,640	193,132	0	0	0	155,034	0	14,400	362,566
Tampa Greyhound Track	109,759	56,494	166,253	0	0	0	131,732	0	14,400	312,385
West Volusia Racing, Inc.	8,634	13,360	21,994	0	0	0	8,273	0	16,980	47,247
Total Greyhound Permitholders	\$810,733	\$554,454	\$1,365,187	\$59,187	\$44,000	\$103,187	\$938,483	\$242,124	\$200,100	\$2,849,081
Jai Alai Permitholders										
Dania Jai Alai	\$0	\$48,640	\$48,640	\$0	\$0	\$0	\$0	\$0	\$640	\$49,280
Dania Summer Jai Alai	0	18,960	18,960	0	0	0	0	0	640	19,600
Ft. Pierce Jai Alai	0	12,480	12,480	0	0	0	0	0	320	12,800
Hamilton Jai Alai and Poker ^(B)	0	69,120	69,120	0	0	0	0	0	0	69,120
Miami Jai Alai	0	71,040	71,040	0	0	0	0	0	2,880	73,920
Ocala Poker and Jai Alai	0	13,120	13,120	0	0	0	0	0	0	13,120
Orlando Jai Alai	0	12,800	12,800	0	0	0	0	0	0	12,800
Summer Jai Alai	0	72,480	72,480	0	0	0	0	0	2,880	75,360
Total Jai Alai Permitholders	\$0	\$318,640	\$318,640	\$0	\$0	\$0	\$0	\$0	\$7,360	\$326,000
Thoroughbred Racing Permitholders										
Calder Race Course, Inc. ^(C)	\$12,540	\$34,300	\$46,840	\$0	\$0	\$0	\$96,513	\$0	\$7,700	\$151,053
Gulfstream Park Thoroughbred After Racing Program, Inc. ^(C)	35,226	35,800	71,026	0	0	0	115,305	0	8,000	194,331
Gulfstream Park Racing Association, Inc. ^(C)	214,399	111,300	325,699	251,871	172,000	423,871	571,944	2,617,907	8,600	3,948,021
Tampa Bay Downs, Inc.	71,187	84,100	155,287	17,858	161,100	178,958	294,750	635,148	8,000	1,272,143
Tropical Park, LLC.	36,382	41,200	77,582	0	0	0	120,387	0	8,000	205,969
Total Thoroughbred Permitholders	\$369,734	\$306,700	\$676,434	\$269,729	\$333,100	\$602,829	\$1,198,899	\$3,253,055	\$40,300	\$5,771,517
Harness Racing Permitholders										
Isle Casino and Racing at Pompano Park	\$16,859	\$122,800	\$139,659	\$52,700	\$179,000	\$231,700	\$48,979	\$376,325	\$7,300	\$803,963
Quarter Horse Racing Permitholders										
Gretna Racing, LLC	\$1	\$32,000	\$32,001	\$0	\$0	\$0	\$0	\$0	\$0	\$32,001
Hamilton Downs Horsetrack, LLC	0	16,000	16,000	0	0	0	0	0	0	16,000
Ocala Breeders' Sales Company, Inc.	145	200	345	0	0	0	0	0	0	345
South Florida Racing Association, LLC (Hialeah Park)	15,483	33,200	48,683	0	0	0	6,487	0	0	55,170
South Marion Real Estate Holdings, LLC	70	16,000	16,070	0	0	0	0	0	0	16,070
Total Quarter Horse Permitholders	\$15,699	\$97,400	\$113,099	\$0	\$0	\$0	\$6,487	\$0	\$0	\$119,586
TOTAL FOR ALL PERMITHOLDERS	\$1,213,025	\$1,399,994	\$2,613,019	\$381,616	\$556,100	\$937,716	\$2,192,848	\$3,871,504	\$255,060	\$9,870,147

(A) The amounts shown are taxes and fees collected after the application of any applicable tax credits, and do not include admissions tax.
 (B) Daily license fees and taxes were not collected. Permitholder relinquished jai alai permit.
 (C) Daily license fees and taxes reported above are amounts due from performances held and do not equal amounts collected/paid.

TOTAL REGULAR AND CHARITY/SCHOLARSHIP HANDLE

Fiscal Year 2015/2016	ON-TRACK		INTERTRACK		TOTAL REGULAR HANDLE	ON-TRACK		INTERTRACK		TOTAL CHARITY SCHOLARSHIP HANDLE	TOTAL HANDLE
	Live	Simulcast	ITW	ITWS		Live	Simulcast	ITW	ITWS		
Greyhound Racing Permitholders											
Daytona Beach Kennel Club, Inc.	\$3,233,216	\$680,033	\$4,189,323	\$0	\$8,102,572	\$274,569	\$49,929	\$233,918	\$0	\$558,416	\$8,660,988
Derby Lane (St. Petersburg Kennel Club, Inc.)	8,713,502	0	10,199,988	0	18,913,490	993,557	0	858,138	0	1,851,695	20,765,185
Ebro Greyhound Park	1,414,416	0	0	0	1,414,416	9,347	0	0	0	9,347	1,423,763
Flagler Dog Track	1,266,998	1,290,564	3,572,632	11,681,905	17,812,099	132,646	68,617	375,143	625,745	1,202,151	19,014,250
H&T Gaming, Inc., d/b/a Mardi Gras Racetrack	1,054,773	1,807,429	2,037,795	4,141,485	9,041,482	136,956	155,030	197,316	288,787	778,089	9,819,571
Jacksonville Kennel Club, Inc.	3,074,664	0	6,044,272	0	9,118,936	537,692	0	878,633	0	1,416,325	10,535,261
License Acquisitions, LLC, d/b/a Palm Beach Greyhound Racing	3,574,040	0	8,625,848	0	12,199,888	429,963	0	975,962	0	1,405,925	13,605,813
Mardi Gras Racetrack and Gaming Center	1,109,789	1,174,517	1,746,575	3,093,548	7,124,429	133,768	154,046	233,051	352,814	873,679	7,998,108
Melbourne Greyhound Park, LLC	145,866	0	0	0	145,866	0	0	0	0	0	145,866
Naples-Ft. Myers Greyhound Track	8,733,039	0	6,704,420	0	15,437,459	468,171	0	287,922	0	756,093	16,193,552
Orange Park Kennel Club, Inc.	2,763,627	0	5,504,087	0	8,267,714	499,255	0	811,781	0	1,311,036	9,578,750
Palm Beach Kennel Club	13,372,821	0	26,915,352	0	40,288,173	731,434	0	1,056,403	0	1,787,837	42,076,010
Penn Sanford, LLC, d/b/a Sanford-Orlando Kennel Club	4,266,543	0	4,695,981	0	8,962,524	156,568	0	193,975	0	350,543	9,313,067
Pensacola Greyhound Racing, LLP	986,835	0	0	0	986,835	0	0	0	0	0	986,835
SOKC, LLC, d/b/a Sanford-Orlando Kennel Club	5,380,779	0	5,678,680	0	11,059,459	157,708	0	206,692	0	364,400	11,423,859
Sarasota Kennel Club, Inc.	4,636,071	0	2,672,812	0	7,308,883	408,486	0	119,231	0	527,717	7,836,600
St. Johns Greyhound Park	7,189,615	0	13,802,797	0	20,992,412	589,126	0	930,056	0	1,519,182	22,511,594
Tampa Greyhound Track	7,436,689	0	11,022,863	0	18,459,552	729,703	0	808,888	0	1,538,591	19,998,143
West Volusia Racing, Inc.	2,740,194	957,258	3,808,870	0	7,506,322	255,912	57,703	209,358	0	522,973	8,029,295
Total Greyhound Permitholders	\$81,093,477	\$5,909,801	\$117,222,295	\$18,916,938	\$223,142,511	\$6,644,861	\$485,325	\$8,376,467	\$1,267,346	\$16,773,999	\$239,916,510
Jai Alai Permitholders											
Dania Jai Alai	\$863,523	\$0	\$1,933,064	\$0	\$2,796,587	\$10,113	\$0	\$12,246	\$0	\$22,359	\$2,818,946
Dania Summer Jai Alai	255,227	0	688,232	0	943,459	6,184	0	19,895	0	26,079	969,538
Ft. Pierce Jai Alai	53,840	0	0	0	53,840	2,402	0	0	0	2,402	56,242
Hamilton Jai Alai and Poker	0	0	0	0	0	0	0	0	0	0	0
Miami Jai Alai	1,932,452	0	2,767,372	0	4,699,824	113,383	0	129,596	0	242,979	4,942,803
Ocala Poker and Jai Alai	26	0	0	0	26	0	0	0	0	0	26
Orlando Jai Alai	41	0	0	0	41	0	0	0	0	0	41
Summer Jai Alai	1,966,082	0	2,807,234	0	4,773,316	119,797	0	139,636	0	259,433	5,032,749
Total Jai Alai Permitholders	\$5,071,191	\$0	\$8,195,902	\$0	\$13,267,093	\$251,879	\$0	\$301,373	\$0	\$553,252	\$13,820,345
Thoroughbred Racing Permitholders											
Calder Race Course, Inc.	\$2,507,988	\$0	\$6,878,968	\$0	\$9,386,956	\$566,736	\$602,737	\$1,880,515	\$9,708,432	\$12,758,420	\$22,145,376
Gulfstream Park Thoroughbred After Racing Program, Inc.	7,045,179	0	6,563,765	0	13,608,944	1,304,851	2,292,912	1,064,695	4,555,360	9,217,818	22,826,762
Gulfstream Park Racing Association, Inc.	42,879,751	50,374,145	33,365,169	131,008,760	257,627,825	6,852,402	3,574,018	3,462,232	9,833,623	23,722,275	281,350,100
Tampa Bay Downs, Inc.	16,686,466	3,571,493	20,740,245	37,753,396	78,751,600	1,906,000	145,162	2,071,123	1,497,894	5,620,179	84,371,779
Tropical Park, LLC.	7,276,431	0	6,822,069	0	14,098,500	1,401,672	3,241,763	1,312,513	10,566,188	16,522,136	30,620,636
Total Thoroughbred Permitholders	\$76,395,815	\$53,945,638	\$74,370,216	\$168,762,156	\$373,473,825	\$12,031,661	\$9,856,592	\$9,791,078	\$36,161,497	\$67,840,828	\$441,314,653
Harness Racing Permitholders											
Isle Casino and Racing at Pompano Park	\$3,371,826	\$10,539,972	\$1,629,998	\$27,181,819	\$42,723,615	\$139,641	\$186,683	\$75,322	\$526,633	\$928,279	\$43,651,894
Quarter Horse Racing Permitholders											
Gretna Racing, LLC	\$73	\$0	\$0	\$0	\$73	\$0	\$0	\$0	\$0	\$0	\$73
Hamilton Downs Horsetrack, LLC	0	0	0	0	0	0	0	0	0	0	0
Ocala Breeders' Sales Company, Inc.	23,552	0	0	0	23,552	0	0	0	0	0	23,552
South Florida Racing Association, LLC (Hialeah Park)	1,548,281	0	340,648	0	1,888,929	0	0	0	0	0	1,888,929
South Marion Real Estate Holdings, LLC	6,992	0	0	0	6,992	0	0	0	0	0	6,992
Total Quarter Horse Permitholders	\$1,578,898	\$0	\$340,648	\$0	\$1,919,546	\$0	\$0	\$0	\$0	\$0	\$1,919,546
TOTAL FOR ALL PERMITHOLDERS	\$167,511,207	\$70,395,411	\$201,759,059	\$214,860,913	\$654,526,590	\$19,068,042	\$10,528,600	\$18,544,240	\$37,955,476	\$86,096,358	\$740,622,948

TOTAL INTERTRACK WAGERING HANDLE BY GUEST

Fiscal Year 2015/2016

GUEST PERMITHOLDER	HOST PERMITHOLDER									
	DAYTONA	DERBY LANE	FLAGLER	H&T GAMING	JACKSONVILLE	LICENSE ACQUISITIONS	MARDI GRAS	NAPLES-FT. MYERS	ORANGE PARK	PALM BEACH
Greyhound Permitholders										
Daytona Beach Kennel Club, Inc.	\$0	\$501,974	\$22,033	\$186,619	\$0	\$0	\$276,397	\$206,628	\$98,598	\$1,013,993
Derby Lane (St. Petersburg Kennel Club, Inc.)	400,444	0	1,215,653	676,148	474,403	879,787	491,883	497,344	459,335	2,636,245
Ebro Greyhound Park	0	355,144	0	0	132,860	244,369	0	0	146,733	667,866
Flagler Dog Track	137,978	484,070	0	752,849	266,098	654,049	580,031	1,035,505	260,844	1,994,773
H&T Gaming, Inc., d/b/a Mardi Gras Racetrack	384,278	433,247	4,748,607	0	357,403	644,971	0	429,245	370,124	1,293,073
Jacksonville Kennel Club, Inc.	350,287	667,386	1,638,855	795,635	897,350	617,905	588,855	445,000	821,973	1,730,831
License Acquisitions, LLC, d/b/a Palm Beach Greyhound Racing	0	0	148,763	0	605,034	0	0	0	13,675	0
Mardi Gras Racetrack and Gaming Center	114,930	158,218	0	0	0	0	0	249,106	0	480,610
Melbourne Greyhound Park, LLC	129,426	243,877	462,711	261,816	153,597	317,960	183,072	192,405	157,275	1,179,146
Naples-Ft. Myers Greyhound Track	134,755	431,240	911,796	244,067	171,828	419,847	184,826	0	146,408	1,120,712
Orange Park Kennel Club, Inc.	558,377	1,154,941	2,490,680	1,201,729	0	980,252	853,951	616,123	0	3,059,888
Palm Beach Kennel Club	377,467	768,238	90,884	133,229	0	0	124,453	609,477	528,126	0
Penn Sanford, LLC, d/b/a Sanford-Orlando Kennel Club	0	0	1,987,011	0	617,208	871,592	382,391	165,952	402,615	832,459
Pensacola Greyhound Racing, LLP	271,501	0	188,291	188,583	979,424	385,147	172,923	154,097	791,466	999,561
SOKC, LLC, d/b/a Sanford-Orlando Kennel Club	451,657	1,083,596	322,165	1,198,522	0	0	505,387	522,869	141,094	1,718,336
Sarasota Kennel Club, Inc.	175,556	913,380	909,699	452,706	207,477	659,354	310,876	289,449	206,619	1,626,983
Tampa Greyhound Track	326,084	1,926,623	310,129	178,835	491,590	757,418	174,908	563,487	483,739	2,041,672
West Volusia Racing, Inc.	0	0	201,217	0	394,265	509,511	232,311	64,343	265,939	491,436
Total Greyhound Permitholders	\$3,812,740	\$9,121,934	\$15,648,494	\$6,270,738	\$5,748,537	\$7,942,162	\$5,062,264	\$6,041,030	\$5,294,563	\$22,887,584
Jai Alai Permitholders										
Dania Jai Alai	\$0	\$13,433	\$0	\$20,816	\$0	\$0	\$0	\$19,226	\$0	\$22,522
Dania Summer Jai Alai	0	26,350	10,396	0	0	0	0	14,071	0	47,760
Ft. Pierce Jai Alai	111,990	169,965	107,426	71,545	103,227	294,386	74,494	186,204	116,384	953,294
Miami Jai Alai	0	0	0	0	0	0	0	0	0	0
Ocala Poker and Jai Alai	141,431	339,550	73,837	48,123	184,616	146,208	42,430	188,052	142,878	381,642
Orlando Jai Alai	0	0	0	0	0	0	0	0	0	0
Summer Jai Alai	0	0	0	0	0	0	0	0	0	0
Total Jai Alai Permitholders	\$253,421	\$549,298	\$191,659	\$140,484	\$287,843	\$440,594	\$116,924	\$407,553	\$259,262	\$1,405,218
Thoroughbred Permitholders										
Calder Race Course, Inc.	\$0	\$0	\$0	\$0	\$0	\$0	\$0	\$0	\$0	\$0
Gulfstream Park Racing Association, Inc.	0	0	0	0	0	0	0	0	0	0
Gulfstream Park Thoroughbred After Racing Program	0	0	0	0	0	0	0	0	0	0
Tampa Bay Downs, Inc.	0	870,296	0	0	177,677	311,330	0	0	183,081	956,215
Tropical Park, Inc.	0	0	0	0	0	0	0	0	0	0
Total Thoroughbred Permitholders	\$0	\$870,296	\$0	\$0	\$177,677	\$311,330	\$0	\$0	\$183,081	\$956,215
Harness Permitholders										
Isle Casino and Racing at Pompano Park	\$0	\$0	\$219,937	\$123,756	\$306,741	\$519,706	\$130,833	\$303,622	\$249,013	\$1,586,483
Quarter Horse Permitholders										
Gretna Racing, LLC	\$235,938	\$344,891	\$195,335	\$130,405	\$402,107	\$236,150	\$115,967	\$240,137	\$329,949	\$651,970
Ocala Breeders' Sales Company Inc.	121,142	171,707	0	0	0	151,868	0	0	0	484,285
South Florida Racing Association, LLC (Hialeah Park)	0	0	0	0	0	0	0	0	0	0
South Marion Real Estate Holdings, LLC	0	0	0	0	0	0	0	0	0	0
Total Quarter Horse Permitholders	\$357,080	\$516,598	\$195,335	\$130,405	\$402,107	\$388,018	\$115,967	\$240,137	\$329,949	\$1,136,255
TOTAL FOR ALL PERMITHOLDERS	\$4,423,241	\$11,058,126	\$16,255,425	\$6,665,383	\$6,922,905	\$9,601,810	\$5,425,988	\$6,992,342	\$6,315,868	\$27,971,755

CONTINUED ON NEXT PAGE

Note: Figures above include handle from charity/scholarship performances.

TOTAL INTERTRACK WAGERING HANDLE BY GUEST

Fiscal Year 2015/2016

GUEST PERMITHOLDER	HOST PERMITHOLDER								
	Penn Sanford	SOKC, LLC	SARASOTA	ST. JOHNS	TAMPA GREYHOUND	WEST VOLUSIA RACING	DANIA	DANIA SUMMER	MIAMI
Greyhound Permitholders									
Daytona Beach Kennel Club, Inc.	\$0	\$362,925	\$108,663	\$687,318	\$0	\$0	\$104,326	\$30,688	\$99,292
Derby Lane (St. Petersburg Kennel Club, Inc.)	331,198	454,859	239,639	1,073,350	0	345,182	98,274	37,685	274,141
Ebro Greyhound Park	0	0	118,953	395,947	558,782	0	13,106	3,872	0
Flagler Dog Track	176,356	258,989	141,826	595,312	530,022	128,606	55,190	25,332	0
H&T Gaming, Inc., d/b/a Mardi Gras Racetrack	454,452	469,222	242,070	581,810	641,500	419,320	90,250	34,443	0
Jacksonville Kennel Club, Inc.	455,281	479,828	245,024	1,983,805	756,411	324,967	0	0	122,593
License Acquisitions, LLC, d/b/a Palm Beach Greyhound Racing	294,173	0	0	0	423,537	151,488	0	0	0
Mardi Gras Racetrack and Gaming Center	83,825	136,541	203,089	349,075	117,203	62,523	34,583	0	0
Melbourne Greyhound Park, LLC	165,547	233,658	90,732	340,191	241,563	102,004	145,528	57,311	381,581
Naples-Ft. Myers Greyhound Track	201,407	211,661	160,746	334,835	445,385	116,158	43,542	18,481	0
Orange Park Kennel Club, Inc.	639,012	770,708	337,839	0	1,314,993	526,381	0	0	144,674
Palm Beach Kennel Club	219,638	603,971	198,615	1,281,210	433,711	155,521	56,860	20,468	299,811
Penn Sanford, LLC,d/b/a Sanford-Orlando Kennel Club	0	0	26,310	196,375	1,093,040	369,256	0	0	0
Pensacola Greyhound Racing, LLP	385,871	445,319	126,149	1,712,460	0	320,345	0	0	33,082
SOKC, LLC, d/b/a Sanford-Orlando Kennel Club	0	0	224,174	1,029,286	0	0	0	0	0
Sarasota Kennel Club, Inc.	238,759	282,539	0	493,975	932,250	135,483	0	0	0
Tampa Greyhound Track	517,486	564,255	287,176	1,168,029	2,064,264	306,541	107,187	40,300	278,966
West Volusia Racing, Inc.	250,119	0	41,038	146,132	580,873	0	0	0	56,208
Total Greyhound Permitholders	\$4,413,124	\$5,274,475	\$2,792,043	\$12,369,110	\$10,133,534	\$3,463,775	\$748,846	\$268,580	\$1,690,348
Jai Alai Permitholders									
Dania Jai Alai	\$0	\$0	\$0	\$0	\$0	\$0	\$0	\$0	\$26,336
Dania Summer Jai Alai	0	0	0	0	0	0	0	0	0
Ft. Pierce Jai Alai	0	0	0	260,897	197,304	92,428	69,158	16,860	187,671
Miami Jai Alai	0	0	0	0	0	0	391,627	0	0
Ocala Poker and Jai Alai	150,179	160,144	0	328,491	341,725	129,932	66,294	28,785	144,197
Orlando Jai Alai	0	0	0	0	0	0	281,733	119,766	457,965
Summer Jai Alai	0	0	0	0	0	0	0	132,068	0
Total Jai Alai Permitholders	\$150,179	\$160,144	\$0	\$589,388	\$539,029	\$222,360	\$808,812	\$297,479	\$816,169
Thoroughbred Permitholders									
Calder Race Course, Inc.	\$0	\$0	\$0	\$0	\$0	\$0	\$0	\$0	\$0
Gulfstream Park Racing Association, Inc.	0	0	0	0	0	0	0	0	0
Gulfstream Park Thoroughbred After Racing Program	0	0	0	0	0	0	0	0	0
Tampa Bay Downs, Inc.	172,021	256,919	0	417,055	894,122	0	40,413	11,892	285,765
Tropical Park, Inc.	0	0	0	0	0	0	0	0	0
Total Thoroughbred Permitholders	\$172,021	\$256,919	\$0	\$417,055	\$894,122	\$0	\$40,413	\$11,892	\$285,765
Harness Permitholders									
Isle Casino and Racing at Pompano Park	\$0	\$0	\$0	\$532,308	\$53	\$0	\$217,443	\$80,542	\$0
Quarter Horse Permitholders									
Gretna Racing, LLC	\$154,632	\$193,834	\$0	\$824,992	\$117,277	\$245,315	\$79,959	\$24,112	\$0
Ocala Breeders' Sales Company Inc.	0	0	0	0	147,736	86,778	49,837	25,522	104,686
South Florida Racing Association, LLC (Hialeah Park)	0	0	0	0	0	0	0	0	0
South Marion Real Estate Holdings, LLC	0	0	0	0	0	0	0	0	0
Total Quarter Horse Permitholders	\$154,632	\$193,834	\$0	\$824,992	\$265,013	\$332,093	\$129,796	\$49,634	\$104,686
TOTAL FOR ALL PERMITHOLDERS	\$4,889,956	\$5,885,372	\$2,792,043	\$14,732,853	\$11,831,751	\$4,018,228	\$1,945,310	\$708,127	\$2,896,968

CONTINUED FROM PREVIOUS PAGE

CONTINUED ON NEXT PAGE

Note: Figures above include handle from charity/scholarship performances.

TOTAL INTERTRACK WAGERING HANDLE BY GUEST

Fiscal Year 2015/2016

GUEST PERMITHOLDER	HOST PERMITHOLDER								TOTAL
	SUMMER	CALDER	GULFSTREAM PARK	GULFSTREAM PARK AFTER RACING PROGRAM	TAMPA BAY DOWNS	TROPICAL PARK	POMPAÑO PARK	HIALEAH PARK	
Greyhound Permitholders									
Daytona Beach Kennel Club, Inc.	\$44,632	\$0	\$3,371,935	\$0	\$1,077,488	\$632,722	\$890,856	\$30,991	\$9,748,078
Derby Lane (St. Petersburg Kennel Club, Inc.)	287,359	676,899	8,423,493	541,581	3,185,155	1,031,265	1,718,955	21,715	26,471,992
Ebro Greyhound Park	0	84,912	1,538,635	178,482	239,525	236,824	0	0	4,916,010
Flagler Dog Track	0	353,780	3,192,513	377,381	500,359	454,740	942,644	0	13,899,247
H&T Gaming, Inc., d/b/a Mardi Gras Racetrack	0	19,942	748,891	19,404	428,390	53,757	2,353,430	0	15,217,829
Jacksonville Kennel Club, Inc.	129,316	346,136	4,644,313	297,773	1,501,594	483,537	1,056,109	0	21,380,764
License Acquisitions, LLC, d/b/a Palm Beach Greyhound Racing	142,055	0	5,416,363	1,761,624	1,682,065	240,863	1,078,490	0	11,958,130
Mardi Gras Racetrack and Gaming Center	0	0	171,045	0	106,447	0	603,275	0	2,870,470
Melbourne Greyhound Park, LLC	398,816	527,132	7,825,548	623,733	2,136,965	755,986	917,559	27,389	18,252,528
Naples-Ft. Myers Greyhound Track	0	1,133,315	13,318,199	662,018	3,810,000	1,166,817	1,481,762	0	26,869,805
Orange Park Kennel Club, Inc.	130,799	419,262	5,380,119	400,526	1,973,291	661,099	153,960	0	23,768,604
Palm Beach Kennel Club	153,620	1,036,739	22,573,881	0	6,240,942	2,394,842	3,910,264	44,929	42,256,896
Penn Sanford, LLC, d/b/a Sanford-Orlando Kennel Club	0	662,169	4,189,975	693,757	1,411,647	136,414	960,869	0	14,999,040
Pensacola Greyhound Racing, LLP	47,294	1,283,357	669,825	235,104	285,378	321,961	0	0	9,997,138
SOKC, LLC, d/b/a Sanford-Orlando Kennel Club	0	0	5,583,994	0	1,895,392	938,335	1,070,862	0	16,685,669
Sarasota Kennel Club, Inc.	0	623,067	8,285,837	564,481	2,574,758	1,009,033	1,375,199	0	22,267,480
Tampa Greyhound Track	277,601	459,718	6,454,492	397,977	2,635,306	662,656	1,674,206	0	25,150,645
West Volusia Racing, Inc.	128,922	424,779	2,581,529	398,487	780,525	67,885	1,045,435	4,035	8,664,989
Total Greyhound Permitholders	\$1,740,414	\$8,051,207	\$104,370,587	\$7,152,328	\$32,465,227	\$11,248,736	\$21,233,875	\$129,059	\$315,375,314
Jai Alai Permitholders									
Dania Jai Alai	\$1,115	\$0	\$27,614	\$11,959	\$4,879	\$0	\$3,852	\$0	\$151,752
Dania Summer Jai Alai	36,871	0	86,839	0	3,474	85,220	748	0	311,729
Ft. Pierce Jai Alai	192,595	334,963	4,344,719	318,839	1,216,043	538,271	0	0	9,958,663
Miami Jai Alai	0	0	0	0	0	0	2,410	0	394,037
Ocala Poker and Jai Alai	139,274	108,736	1,545,024	123,542	525,724	172,534	309,004	0	5,962,352
Orlando Jai Alai	482,979	514,251	7,049,077	472,043	2,204,601	775,262	2,108,581	0	14,466,258
Summer Jai Alai	0	0	0	0	0	0	0	0	132,068
Total Jai Alai Permitholders	\$852,834	\$957,950	\$13,053,273	\$926,383	\$3,954,721	\$1,571,287	\$2,424,595	\$0	\$31,376,859
Thoroughbred Permitholders									
Calder Race Course, Inc.	\$0	\$0	\$1,824,236	\$0	\$0	\$0	\$0	\$0	\$1,824,236
Gulfstream Park Racing Association, Inc.	0	5,312,041	0	0	15,355,156	0	3,134,448	128,514	23,930,159
Gulfstream Park Thoroughbred After Racing Program	0	0	0	0	555,402	0	0	0	555,402
Tampa Bay Downs, Inc.	244,803	1,364,738	20,068,177	1,258,624	0	1,677,214	1,800,306	0	30,990,648
Tropical Park, Inc.	0	0	0	0	0	0	3,196	0	3,196
Total Thoroughbred Permitholders	\$244,803	\$6,676,779	\$21,892,413	\$1,258,624	\$15,910,558	\$1,677,214	\$4,937,950	\$128,514	\$57,303,641
Harness Permitholders									
Isle Casino and Racing at Pompano Park	\$0	\$1,462,141	\$18,929,069	\$1,382,919	\$4,556,938	\$1,967,248	\$0	\$83,075	\$32,651,827
Quarter Horse Permitholders									
Gretna Racing, LLC	\$2,539	\$76,729	\$1,603,384	\$117,154	\$341,681	\$151,558	\$270,611	\$0	\$7,086,626
Ocala Breeders' Sales Company Inc.	106,280	661,043	8,664,111	660,581	2,631,493	1,046,744	426,740	0	15,540,553
South Florida Racing Association, LLC (Hialeah Park)	0	582,066	9,149,639	685,831	2,199,984	1,033,351	120,001	0	13,770,872
South Marion Real Estate Holdings, LLC	0	0	7,308	0	2,056	4,632	0	0	13,996
Total Quarter Horse Permitholders	\$108,819	\$1,319,838	\$19,424,442	\$1,463,566	\$5,175,214	\$2,236,285	\$817,352	\$0	\$36,412,047
TOTAL FOR ALL PERMITHOLDERS	\$2,946,870	\$18,467,915	\$177,669,784	\$12,183,820	\$62,062,658	\$18,700,770	\$29,413,772	\$340,648	\$473,119,688

CONTINUED FROM PREVIOUS PAGE

Note: Figures above include handle from charity/scholarship performances.

CHARITY AND SCHOLARSHIP PERFORMANCES

Each permitholder may operate up to five additional days designated as charity or scholarship days during their regular meet. Proceeds from these additional days are paid to approved charities, major state and private institutions of higher learning, community colleges, the Historical Resources Operating Trust Fund, and the Racing Scholarship Trust Fund (Board of Governors' Operations and Maintenance Trust Fund). A list of proposed recipients is submitted annually by the permitholder to the division. Typically, the amount contributed to charitable organizations is determined by calculating the amount of taxes due to the state had it been a regular performance. A minimum of \$1,940,606 was paid to charitable organizations during Fiscal Year 2015/2016, bringing the total proceeds disbursed since 1985 to \$80,074,887.

RACING SCHOLARSHIP TRUST FUND

The Board of Governors, within the Department of Education, oversees the Board of Governors' Operations and Maintenance Trust Fund and ensures that the referenced contributions are used to provide scholarships to deserving students attending Florida's colleges and universities. A total of \$16,886,335 has been paid to this fund since the program began in 1949.

Racing Scholarship Trust Fund	
Washington County Kennel Club, Inc.	\$1,225
Total For 2015/2016 Fiscal Year	\$1,225

ABANDONED WINNING TICKETS

Abandoned pari-mutuel tickets are winning tickets that remain uncashed for a period of one year. The value of greyhound and jai alai abandoned tickets for live on-track races or games escheat to the state. These funds are deposited into the Department of Education's State School Trust Fund for the support and maintenance of Florida's public schools. Since 1957, the total paid into this fund is \$96,388,858. The amount collected from abandoned winning tickets for the State School Trust Fund for this fiscal year is detailed below.

Abandoned Winning Tickets	
Greyhound Permitholders	\$764,920
Jai Alai Permitholders	45,454
Total For 2015/2016 Fiscal Year	\$810,374

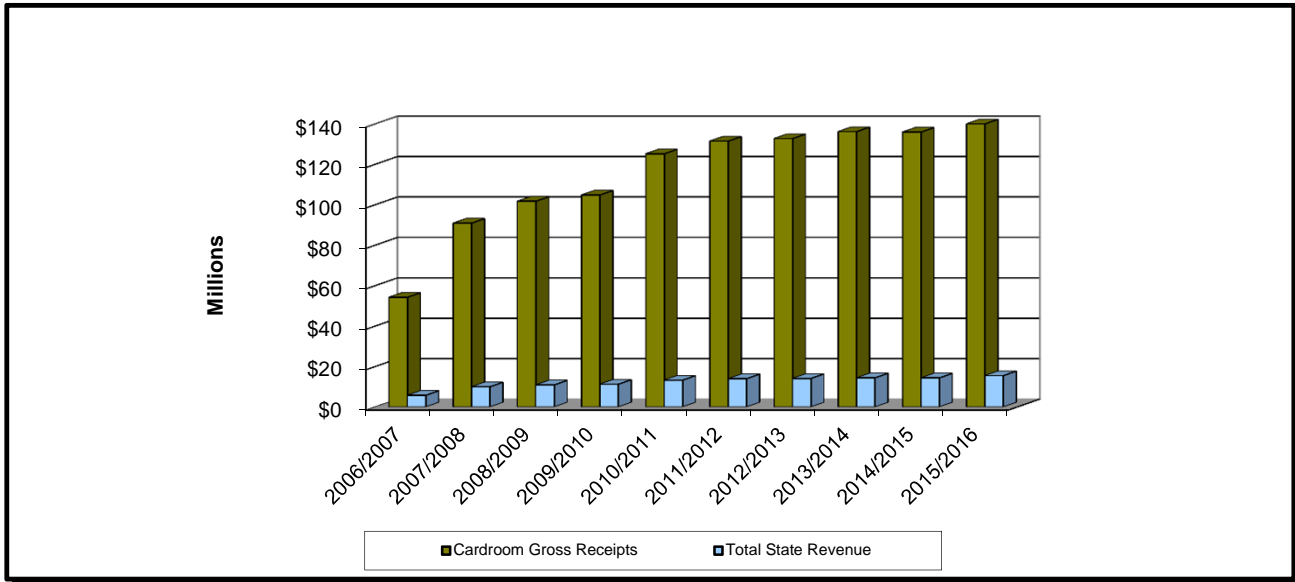
In harness and quarter horse racing, abandoned winning tickets are paid to the respective breeders' associations. Abandoned winning tickets from thoroughbred horse racing are retained by the permitholder.

CARDROOM COMPARATIVE DATA

During Fiscal Year 2015/2016, there were 25 permit holders that obtained a cardroom license. One did not operate, the other 24 operated at 24 pari-mutuel facilities located throughout the state. The number of cardroom tables increased from 755 in Fiscal Year 2014/2015, to 774 in Fiscal Year 2015/2016. Cardroom gross receipts increased from \$135,888,902 to \$147,298,438 and the gross receipts tax increased from \$13,589,789 to \$14,729,654 this fiscal year. Table fees increased from \$755,000 to \$774,000 this fiscal year. The overall result was an increase in total state revenue from \$14,344,789 to \$15,503,654 this fiscal year.

Cardroom tax revenue is distributed 50 percent between the Pari-Mutuel Wagering Trust Fund and the General Revenue Fund. In accordance with Section 849.086(13)(h), Florida Statutes, one quarter of the moneys deposited into the Pari-Mutuel Wagering Trust Fund must be distributed to counties and municipalities that approved the cardroom. In October 2016, the division distributed approximately \$1,841,207 to the counties/municipalities from cardroom gross receipts.

CARDROOM GROSS RECEIPTS AND TOTAL STATE REVENUE FISCAL YEARS 2006/2007 THROUGH 2015/2016



CARDROOM GROSS RECEIPTS AND STATE REVENUE SUMMARY

Fiscal Year	Total Cardroom Gross Receipts	Gross Receipts Tax	Table Fees Collected ^(A)	Total State Revenue (Gross Receipts Tax plus Table Fees)	Total State Revenue as a Percent of Gross Receipts
2006/2007	\$54,208,544	\$5,420,855	\$325,500	\$5,746,355	10.60%
2007/2008	\$90,863,855	\$9,086,385	\$875,000	\$9,961,385	10.96%
2008/2009	\$101,700,243	\$10,170,024	\$698,000	\$10,868,024	10.69%
2009/2010	\$104,799,448	\$10,479,945	\$749,000	\$11,228,945	10.71%
2010/2011	\$125,141,080	\$12,514,108	\$718,000	\$13,232,108	10.57%
2011/2012	\$131,447,663	\$13,144,767	\$834,000	\$13,978,767	10.63%
2012/2013	\$132,690,415	\$13,269,045	\$810,000	\$14,079,045	10.61%
2013/2014	\$136,163,616	\$13,615,464	\$788,000	\$14,403,464	10.58%
2014/2015	\$135,888,902	\$13,589,789	\$755,000	\$14,344,789	10.56%
2015/2016	\$147,298,438	\$14,729,654	\$774,000	\$15,503,654	10.53%

^(A) Amount agrees with the number of approved cardroom tables per annual cardroom licenses, and reflects the number of tables in operation each fiscal year.

COMPONENTS OF CARDROOM REVENUE BY ASSOCIATION

Fiscal Year 2015/2016

	County / Municipality	Gross Receipts	Tournament Gross Receipts	Total Gross Receipts	Gross Receipts Tax ^(A)	Table Fees Collected ^(B)	Total Taxes and Fees
Greyhound Racing Permitholders							
Daytona Beach Kennel Club, Inc./West Volusia Racing, Inc.	Volusia	\$11,951,178	\$664,136	\$12,615,314	\$1,261,531	\$55,000	\$1,316,531
Derby Lane (St. Petersburg Kennel Club, Inc.)	Pinellas	7,997,141	839,313	8,836,454	883,645	45,000	928,645
Ebro Greyhound Park	Washington	2,950,159	350,561	3,300,720	330,072	22,000	352,072
Flagler Dog Track	Dade	8,236,428	35,939	8,272,367	827,237	29,000	856,237
Jacksonville Kennel Club, Inc.	Duval	19,506,956	1,120,720	20,627,676	2,062,768	107,000	2,169,768
Mardi Gras Racetrack and Gaming Center/H & T Gaming, Inc.	Hallandale	6,334,001	227,997	6,561,998	656,200	30,000	686,200
Melbourne Greyhound Park, LLC	Brevard	4,950,806	216,830	5,167,636	516,764	42,000	558,764
Naples-Ft. Myers Greyhound Track	Lee	7,225,151	529,175	7,754,326	775,433	38,000	813,433
Orange Park Kennel Club, Inc.	Town of Orange Park	8,171,943	85,910	8,257,853	825,785	39,000	864,785
Palm Beach Kennel Club/License Acquisitions, LLC	Palm Beach	13,183,655	1,070,335	14,253,990	1,428,064	75,000	1,503,064
Pensacola Greyhound Racing, LLP	Escambia	3,703,815	548,320	4,252,135	425,214	20,000	445,214
Sarasota Kennel Club, Inc.	Sarasota	5,443,003	831,015	6,274,018	627,402	35,000	662,402
St. Johns Greyhound Park ^(C)	St. Johns	0	0	0	0	1,000	1,000
Tampa Greyhound Track	Hillsborough	1,904,400	58,419	1,962,819	196,282	37,000	233,282
Total Greyhound Permitholders		\$101,558,636	\$6,578,670	\$108,137,306	\$10,816,397	\$575,000	\$11,391,397
Jai Alai Permitholders							
Dania Jai Alai/Dania Summer Jai Alai	Hallandale	\$551,356	\$4,231	\$555,587	\$55,559	\$42,000	\$97,559
Ft. Pierce Jai Alai	St. Lucie	2,299,297	86,479	2,385,776	238,578	25,000	263,578
Hamilton Jai Alai and Poker	Hamilton	40,564	0	40,564	1,201	0	1,201
Miami/Summer Jai Alai	Dade	419,153	450	419,603	41,960	11,000	52,960
Ocala Poker and Jai Alai	Marion	2,974,293	164,190	3,138,483	313,848	21,000	334,848
Total Jai Alai Permitholders		\$6,284,663	\$255,350	\$6,540,013	\$651,146	\$99,000	\$750,146
Thoroughbred Racing Permitholders							
Gulfstream Park Racing Association, Inc.	Broward	5,049,211	100,298	5,149,509	514,951	21,000	535,951
Tampa Bay Downs, Inc.	Hillsborough	3,757,101	695,120	\$4,452,221	445,222	23,000	468,222
Total Thoroughbred Permitholders		\$8,806,312	\$795,418	\$9,601,730	\$960,173	\$44,000	\$1,004,173
Harness Racing Permitholders							
Isle Casino and Racing at Pompano Park	Broward	\$10,574,609	\$1,351,220	\$11,925,829	\$1,192,583	\$45,000	\$1,237,583
Quarter Horse Racing Permitholders							
Gretna Racing, LLC	Gadsden	\$2,020,647	\$180,385	\$2,201,032	\$220,103	\$15,000	\$235,103
South Florida Racing Association, LLC (Hialeah Park)	City of Hialeah	7,878,711	663,283	\$8,541,994	854,200	33,000	887,200
South Marion Real Estate Holdings, LLC	Marion	346,970	3,564	\$350,534	35,052	50,000	85,052
Total Quarter Horse Permitholders		\$10,246,328	\$847,232	\$11,093,560	\$1,109,355	\$98,000	1,207,355
TOTAL FOR ALL PERMITHOLDERS		\$137,470,548	\$9,827,890	\$147,298,438	\$14,729,654	\$861,000	\$15,590,654

(A) 1/8th of total gross receipts tax is distributed to counties or municipalities by October 1st of the following year.

(B) Amounts shown are table fees collected during fiscal year 2015/2016.

(C) Permitholder paid table fees and received cardroom license for 2015/2016, but did not conduct cardroom operations during 2015/2016.

SLOT COMPARATIVE DATA

During Fiscal Year 2015/2016, the total amount wagered by patrons was \$8,237,416,807. Average daily revenue per slot machine was \$188. Total net slot revenue was \$537,077,173. As a result, the total taxes paid to the state was \$187,977,011, an increase of three percent in total paid slot taxes from the previous fiscal year. A total of \$20,250,000 was collected in annual fees, including the Compulsive or Addictive Gambling Prevention Program Fee, per Section 551.118(3), Florida Statutes. For further details, see the Summary of State Revenue From Pari-Mutuel, Cardroom, Slot Activity, and Indian Gaming Compact (page 36) of this report. Dania Jai Alai reopened their facility on January 13, 2016, after remodeling.

HISTORICAL SLOT FACILITY ACTIVITY		
Fiscal Year	Total Amount Wagered	Total State Revenue
2006/2007	\$1,114,108,466	\$49,620,582
2007/2008	\$3,023,981,126	\$120,560,317
2008/2009	\$2,701,341,778	\$103,895,351
2009/2010	\$3,840,468,455	\$138,125,105
2010/2011	\$5,054,297,731	\$125,063,886
2011/2012	\$6,045,432,393	\$143,962,346
2012/2013	\$6,690,513,855	\$152,532,223
2013/2014	\$7,953,652,039	\$174,024,068
2014/2015	\$7,979,515,007	\$182,584,841
2015/2016	\$8,237,416,807	\$187,977,011

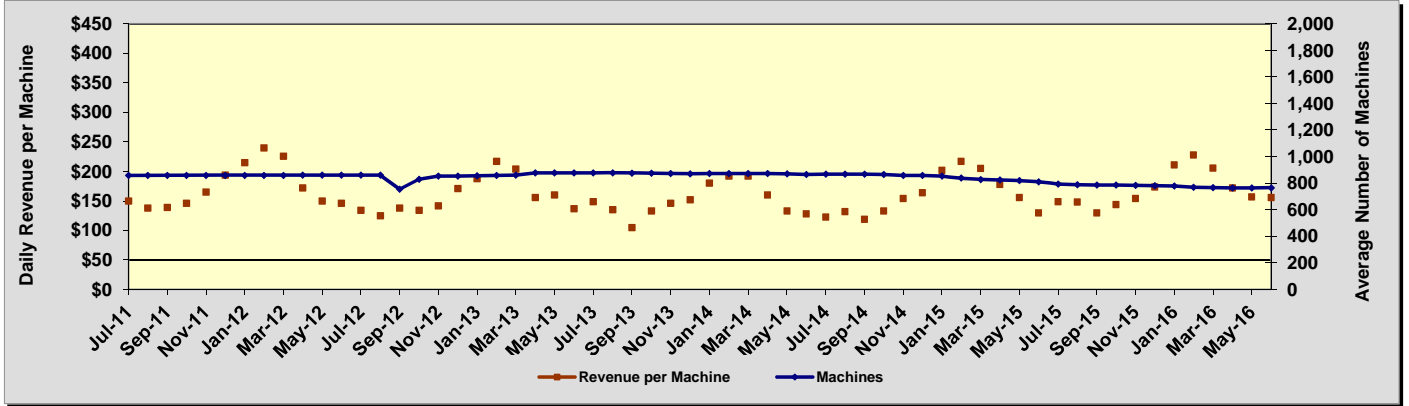
FISCAL YEAR 2015/2016									
	Gulfstream Operations Began 11/15/2006	Mardi Gras Operations Began 12/28/2006	Pompano Park Operations Began 4/14/2007	West Flagler Operations Began 10/15/2009	Calder Operations Began 1/22/2010	Miami Jai Alai Operations Began 1/23/2012	Hialeah Park Operations Began 8/14/2013	Dania Jai Alai ⁽²⁾ Operations Began 2/20/2014	TOTAL
Average Number of Machines	778	900	1,449	802	1,094	1,040	866	879	7,808
Number of Operating Days	366	366	366	366	366	366	366	170	366
Average Daily Revenue per Machine	\$169	\$142	\$270	\$285	\$187	\$161	\$215	\$74	\$188
Amount Wagered	\$799,388,790	\$722,041,285	\$1,854,138,727	\$1,400,210,746	\$991,397,112	\$1,141,726,255	\$1,172,114,593	\$156,399,299	\$8,237,416,807
Amount Won By Patrons	\$738,538,349	\$663,886,584	\$1,686,861,544	\$1,314,408,290	\$901,091,414	\$1,070,887,522	\$1,095,758,202	\$144,211,149	\$7,615,643,054
Promotional Credits	\$12,921,855	\$11,339,633	\$24,397,053	\$2,337,960	\$15,534,580	\$9,614,337	\$8,088,001	\$1,151,571	\$85,384,990
30-Day Unclaimed Tickets	\$106,517	\$31,757	\$202,107	\$92,631	\$38,105	\$147,954	\$42,919	\$10,216	\$672,206
Net Slot Machine Revenue	\$48,035,102	\$46,846,825	\$143,082,238	\$83,559,728	\$74,820,811	\$61,372,350	\$68,311,309	\$11,048,810	\$537,077,173
State Tax Revenue ⁽¹⁾	\$16,812,286	\$16,396,389	\$50,078,783	\$29,245,905	\$26,187,284	\$21,480,322	\$23,908,958	\$3,867,084	\$187,977,011
Permitholder Revenue	\$31,222,816	\$30,450,436	\$93,003,455	\$54,313,823	\$48,633,527	\$39,892,028	\$44,402,351	\$7,181,726	\$349,100,162
Total State Revenue as a Percent of Amount Wagered	2.10%	2.27%	2.70%	2.09%	2.64%	1.88%	2.04%	2.47%	2.28%

(1) Taxes paid on net slot machine revenue were accounted for by the division, then immediately transferred to the Department of Education's Educational Enhancement Trust Fund.

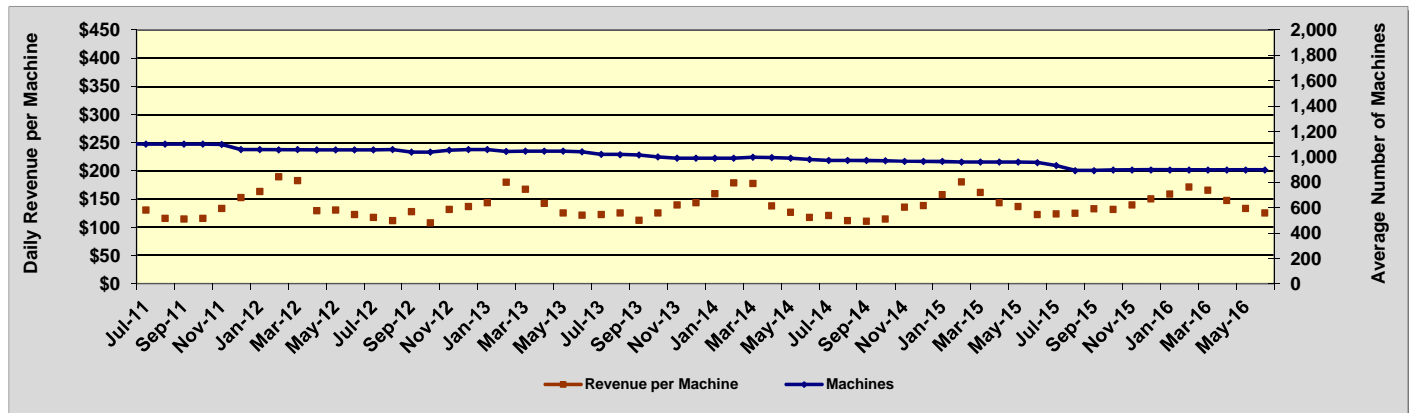
(2) Dania's Casino reopened on January 13, 2016, once remodeling was complete.

Daily Revenue per Machine Compared to Average Number of Machines For Fiscal Years 2011/2012 - 2015/2016

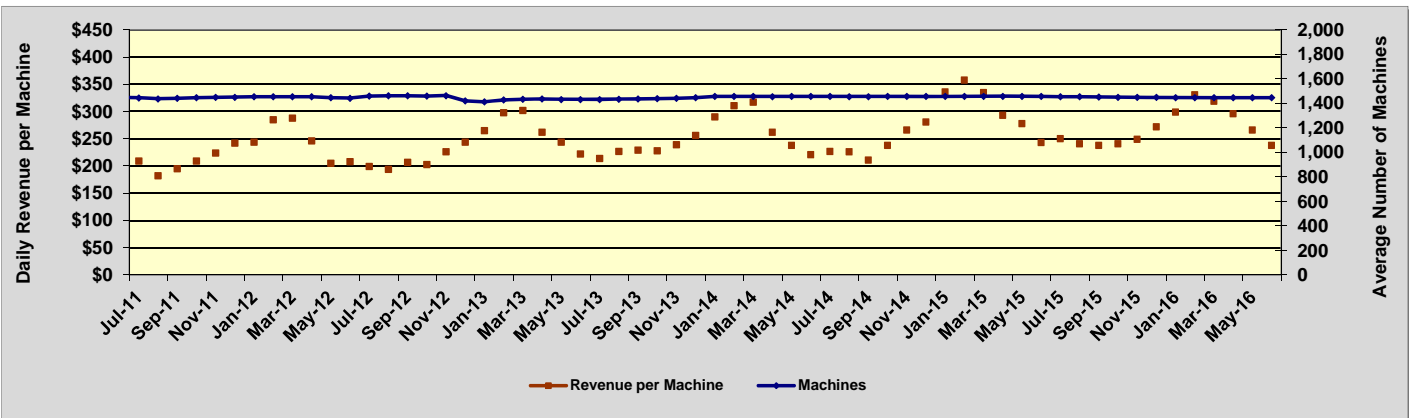
GULFSTREAM PARK RACING AND CASINO



MARDI GRAS RACETRACK AND GAMING CENTER

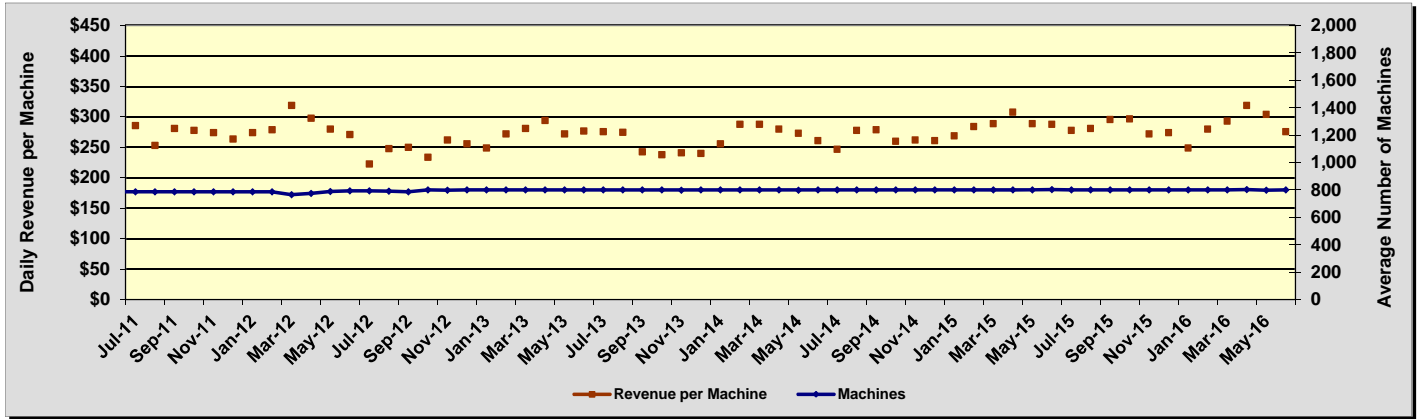


ISLE CASINO AND RACING AT POMPANO PARK

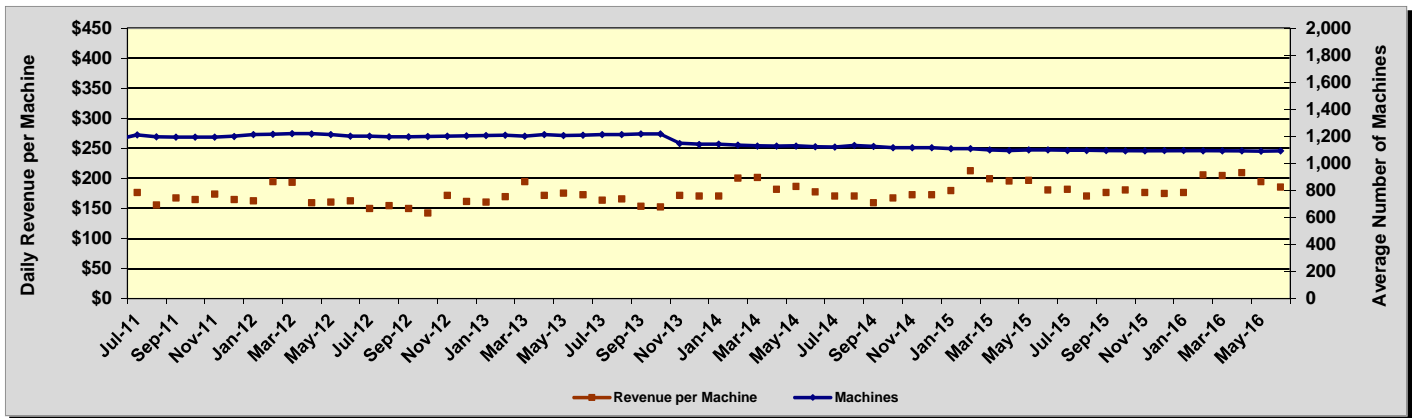


Daily Revenue per Machine Compared to Average Number of Machines For Fiscal Years 2011/2012 - 2015/2016

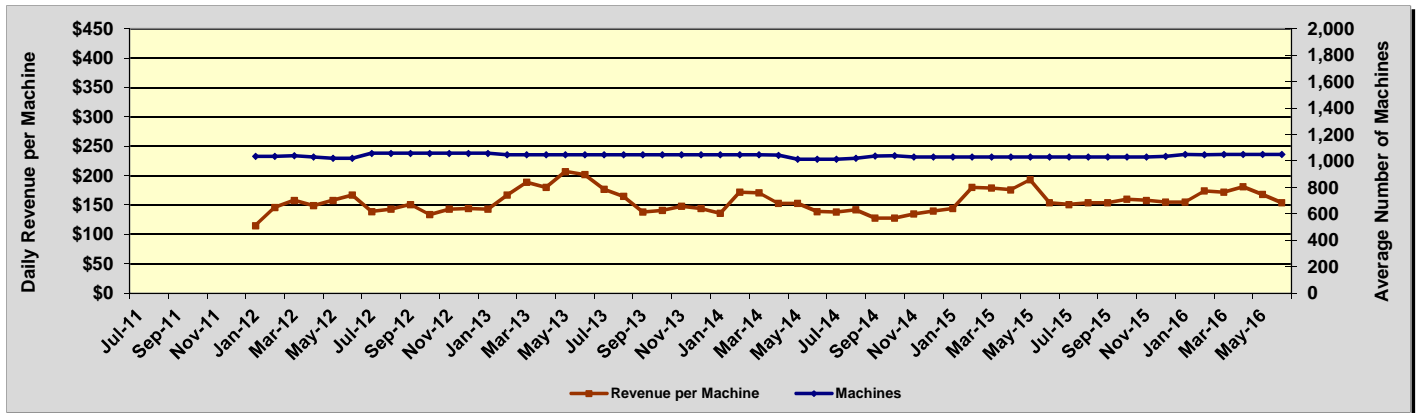
FLAGLER DOG TRACK AND MAGIC CITY CASINO



CALDER CASINO AND RACE COURSE

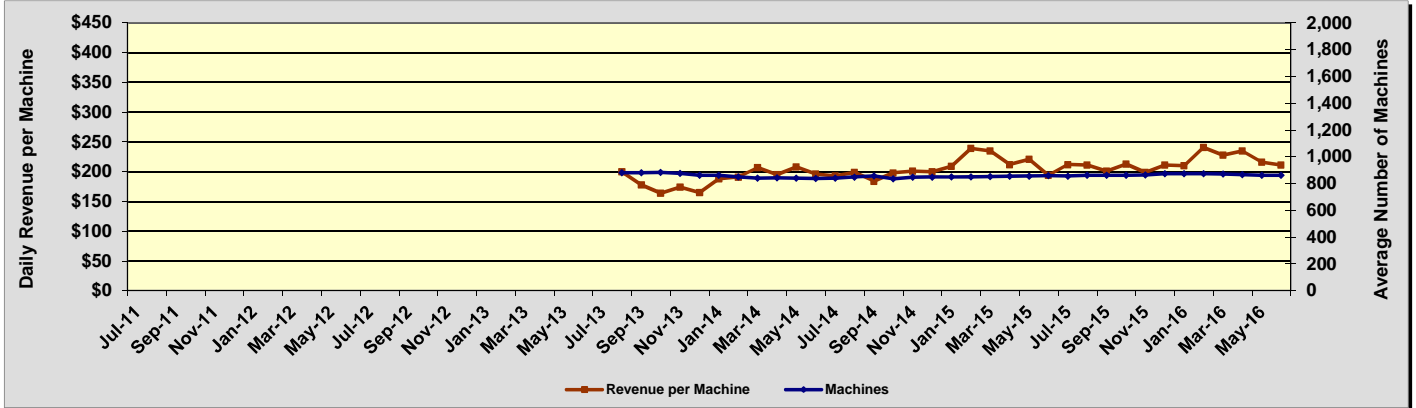


MIAMI CASINO AND JAI ALAI

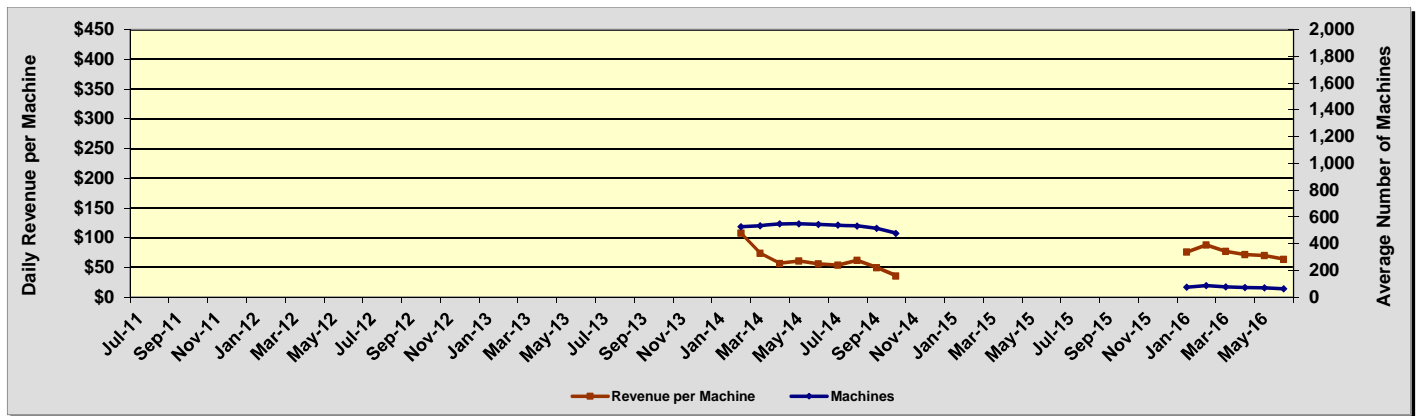


Daily Revenue per Machine Compared to Average Number of Machines For Fiscal Years 2011/2012 - 2015/2016

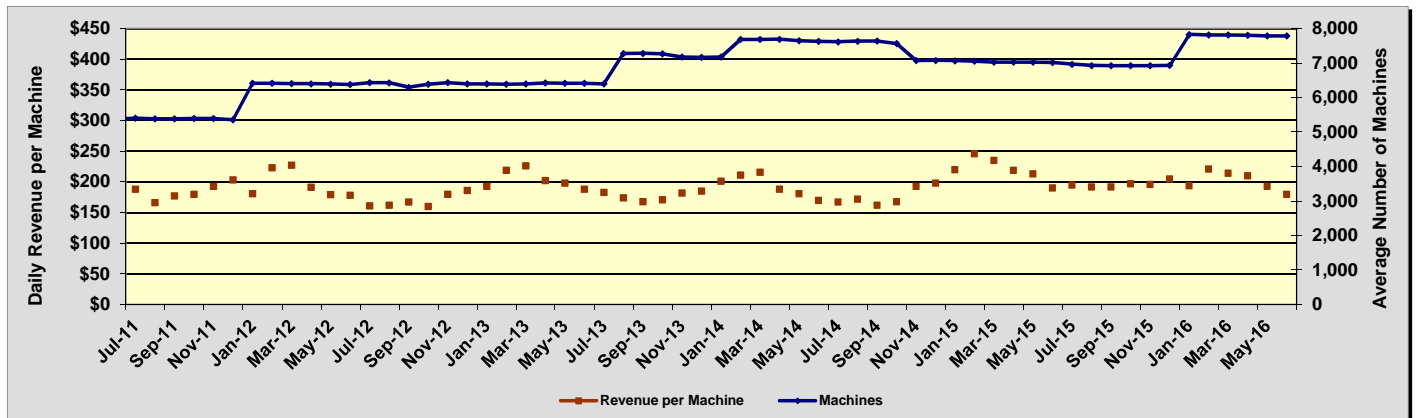
HIALEAH PARK RACING AND CASINO



CASINO AT DANIA BEACH (1)



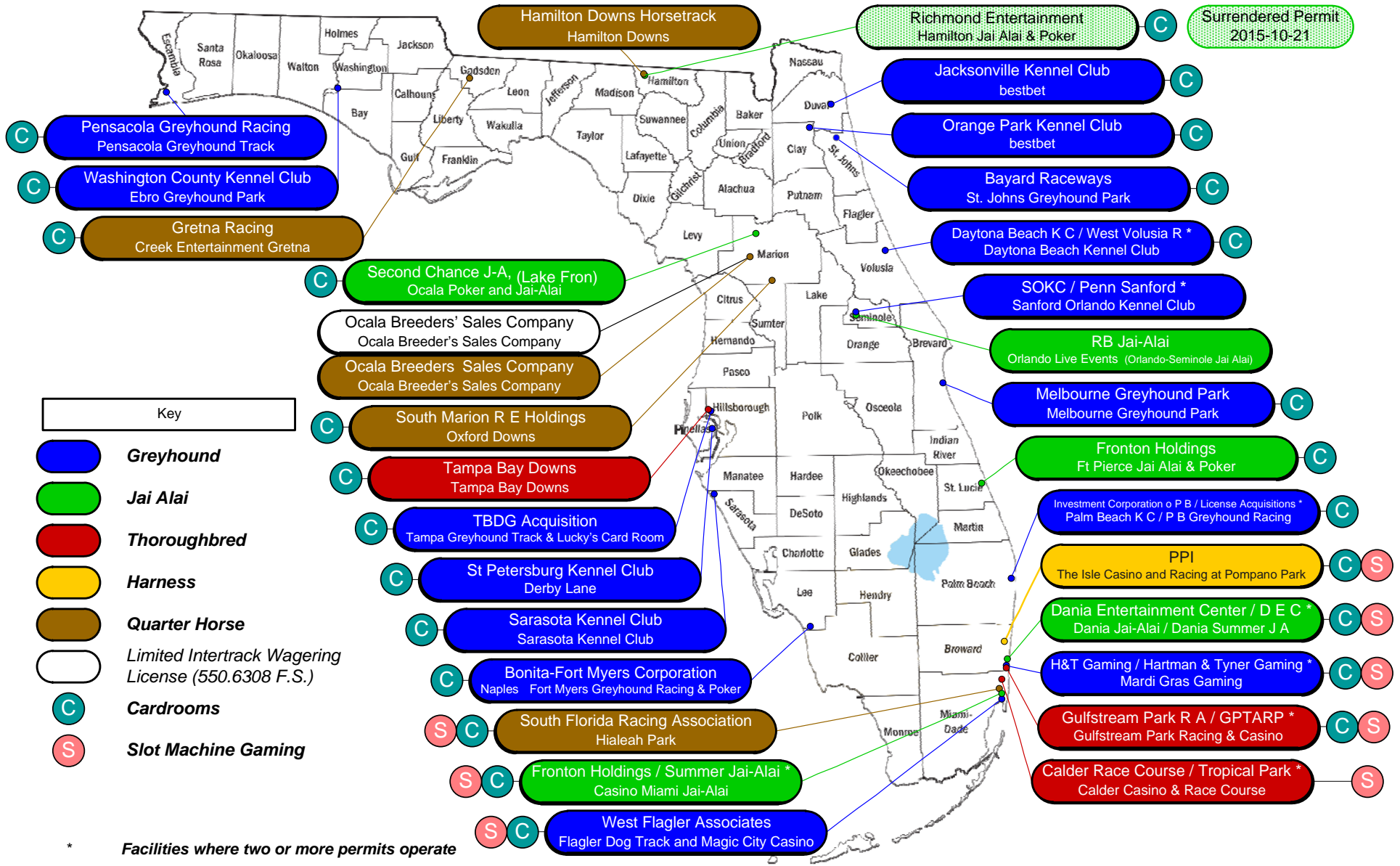
ALL FACILITIES COMBINED

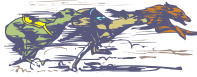


(1) The Casino at Dania Beach closed October 13, 2014 for remodeling, and reopened January 13, 2016.

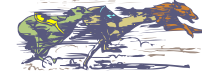
DATA BY PERMITHOLDER/FACILITY

Pari-Mutuel Permitholders with 2015-2016 Operating Licenses





GREYHOUND PERMITHOLDERS



Florida remains the leader in greyhound racing in the United States with 19 permitholders that operated at 12 tracks throughout the state. A total of 3,369 completed performances, including charity and scholarship performances, were conducted during this past fiscal year, a decrease of approximately four percent from the previous year.

During Fiscal Year 2015/2016, handle wagered on live greyhound performances decreased by approximately five percent. Intertrack handle wagered on broadcasts of live Florida greyhound performances decreased by approximately one percent. Simulcast handle wagered on broadcasts of performances from outside the state decreased by approximately 13 percent. Intertrack simulcast handle wagered on broadcast of performances from outside the state decreased by approximately nine percent. Overall, there was a decrease in total handle by approximately four percent for the Florida greyhound industry.

Total paid attendance decreased by approximately eight percent from the prior year. The division reports only paid attendance and does not include free admissions or complimentary passes in its data. Total greyhound revenue to the state decreased by approximately 14 percent during Fiscal Year 2015/2016. The greyhound industry accounted for approximately 29.1 percent of Florida's total revenue and 32.4 percent of total handle from pari-mutuel performances.

Greyhound permitholders reported paying a total of \$25,948,623 in purses during Fiscal Year 2015/2016. For more detail on purses paid, please refer to the following information by permitholder. The division was able to confirm reported purse amounts from the weekly purse reports submitted in accordance with Section 61D-8.006, Florida Administrative Code.

All of Florida's greyhound permitholders actively sponsor greyhound adoption programs. Many of the state's greyhound tracks provide for on-site adoption booths, animal welfare, funding, advertising, special events and public information. Section 550.1647, Florida Statutes, provides a greyhound permitholder with credits in an amount equal to the uncashed pari-mutuel tickets remitted in the prior state fiscal year to the state, which is applied against any taxes imposed the next fiscal year. Additionally, Section 550.1647, Florida Statutes, requires each permitholder to pay an amount not less than 10 percent of the credit provided by this section to any bona fide organization that promotes or encourages the adoption of greyhounds. During Fiscal Year 2015/2016, total contributions provided to greyhound adoption units amounted to \$196,122, which exceeded the minimum statutory requirement.

Total Live Performances (Complete and counted toward a full schedule) ⁽¹⁾	3,369	Number of Races	44,364
(1) Performances where eight or more races were held.			
Total Live Performances (Actual)	3,446	Total Paid Attendance	254,839
Total Racing Days	2,373	Total Admission Tax	\$12,284

Permitholder	County	Meet Period	Live Performances (Complete and counted toward full schedule)	Live Performances (Actual)	Racing Days	Number of Races	Purses Paid	Paid Attendance	Total Admission Tax
Daytona Beach Kennel Club, Inc. 960 South Williamson Blvd. Daytona Beach, FL 32114-7247	Volusia	1/1/2016 to 6/30/2016	206	207	155	3,124	\$969,587	0	\$0
Derby Lane (St. Petersburg Kennel Club, Inc.) 10490 Gandy Blvd. St. Petersburg, FL 33702-2395	Pinellas	1/1/2016 to 6/30/2016	205	205	154	3,074	\$2,153,272	0	\$0
Ebro Greyhound Park (Washington County Kennel Club, Inc.) 6558 Dog Track Rd. Ebro, FL 32437-1142	Washington	7/1/2015 to 9/7/2015 and 5/7/2016 to 6/30/2016	174	176	88	1,406	\$439,414	7,626	\$18
Flagler Dog Track (West Flagler Associates, Ltd.) 401 N.W. 38th Court Miami, FL 33126-5638	Dade	7/2/2015 to 10/24/2015 and 6/4/2016 to 6/30/2016	131	163	102	1,693	\$3,479,152	0	\$0
Hartman and Tyner, Inc. (Mardi Gras Racetrack & Gaming Center) 831 North Federal Hwy Hallandale Beach, FL 33009-2410	Broward	12/3/2015 to 2/13/2016	102	102	51	917	\$975,493	0	\$0
H&T Gaming, Inc. (Mardi Gras Racetrack & Gaming Center) 831 North Federal Hwy Hallandale Beach, FL 33009-2410	Dade	2/14/2016 to 4/30/2016 at Mardi Gras	110	110	55	988	\$1,045,000	0	\$0
Jacksonville Kennel Club, Inc. (Jacksonville Greyhound Racing, Inc.) 201 Monument Rd. Jacksonville, FL 32225-8106	Duval	7/1/2015 to 9/27/2015 at Orange Park	103	103	77	1,545	\$964,374	0	\$0
License Acquisitions, LLC (Palm Beach Greyhound Racing) 1111 North Congress Ave. West Palm Beach, FL 33409-6317	Palm Beach	7/1/2015 to 9/30/2015 at Palm Beach	118	118	92	1,767	\$996,762	2,877	\$34

Permittholder	County	Meet Period	Live Performances (Complete and counted toward full schedule)	Live Performances (Actual)	Racing Days	Number of Races	Purses Paid	Paid Attendance	Total Admission Tax
Melbourne Greyhound Park, LLC 1100 North Wickham Rd. Melbourne, FL 32935-8941	Brevard	1/1/2016 to 4/16/2016	108	108	92	969	\$376,959	0	\$0
Naples - Ft. Myers Greyhound Track (Southwest Florida Enterprises, Inc.) 10601 Bonita Beach Rd. Bonita Springs, FL 34135-5620	Lee	10/30/2015 to 5/30/2016	358	398	177	3,629	\$1,690,261	149,435	\$10,904
Orange Park Kennel Club, Inc. (Jacksonville Greyhound Racing, Inc.) 455 Park Ave. Orange Park, FL 32073-3101	Clay	9/28/2015 to 11/29/2015 and 6/6/2016 to 6/30/2016	100	100	74	1,500	\$930,328	0	\$0
Palm Beach Kennel Club (Investment Corporation of Palm Beach) 1111 North Congress Ave. West Palm Beach, FL 33409-6317	Palm Beach	10/1/2015 to 6/30/2016	349	349	272	5,233	\$3,350,993	17,562	\$582
Penn Sanford, LLC (Sanford-Orlando Kennel Club) 301 Dog Track Rd. Longwood, FL 32750-6558	Seminole	7/1/2015 to 12/31/2015	147	147	118	2,318	\$833,613	0	\$0
Pensacola Greyhound Racing, LLP 951 Dog Track Rd. Pensacola, FL 32506-8236	Escambia	7/1/2015 to 10/3/2015 and 1/22/2016 to 6/30/2016	160	160	128	1,598	\$841,030	0	\$0
SOKC, LLC (Sanford-Orlando Kennel Club) 301 Dog Track Rd. Longwood, FL 32750-6558	Seminole	1/1/2016 to 6/30/2016	181	181	129	2,640	\$933,186	0	\$0
Sarasota Kennel Club, Inc. 5400 Bradenton Rd. Sarasota, FL 34234-2999	Sarasota	11/6/2015 to 4/23/2016	190	191	142	2,564	\$796,738	77,339	\$746
St. Johns Greyhound Park, a/k/a Bayard Raceways, Inc. (Jacksonville Greyhound Racing, Inc.) 6322 Racetrack Rd. St. Johns, FL 32259-2107	St. Johns	11/30/2015 to 6/5/2016 at Orange Park	215	215	160	3,218	\$2,242,854	0	\$0
Tampa Greyhound Track (TBDG Acquisiton, LLC) 8300 North Nebraska Ave. Tampa, FL 33604-3107	Hillsborough	7/1/2015 to 12/31/2015 at Derby Lane	209	209	155	3,127	\$2,073,467	0	\$0
West Volusia Racing, Inc. 960 South Williamson Blvd. Daytona Beach, FL 32114-7247	Volusia	7/1/2015 to 12/31/2015 at Daytona	203	204	152	3,054	\$856,140	0	\$0



JAI ALAI PERMITHOLDERS



Florida was the first state in the nation to conduct jai alai performances, with the first fronton being built in 1926. There were eight jai alai permitholders operating at six frontons throughout Florida. In fact, Florida is now the only state where pari-mutuel wagering on live jai alai games is conducted. A total of 862 completed performances, including charity and scholarship performances, were conducted during this past fiscal year, a decrease of approximately seven percent from the previous fiscal year.

During Fiscal Year 2015/2016, handle wagered on live jai alai performances increased by less than one percent. Intertrack handle wagered on broadcasts of live Florida jai alai performances decreased by approximately 14 percent. There are no longer any other states that conduct jai alai; therefore, there was no simulcast or intertrack simulcast handle. Total handle declined by approximately nine percent for the Florida jai alai industry.

Total jai alai revenue to the state decreased by approximately 26 percent during Fiscal Year 2015/2016. The jai alai industry accounted for approximately 2.6 percent of Florida's total revenue and 1.9 percent of total handle from pari-mutuel performances.

Permitholders reported paying a total of \$3,651,423 in players' awards. For more detail on players' awards paid, please refer to the following information by permitholder.

There was no change in paid attendance from the prior year. The division reports only paid attendance and does not include free admissions or complimentary passes in its data.

Total Live Performances (Complete and counted toward a full schedule) ⁽¹⁾	862	Number of Games	8,150	
(1) Performances where eight or more races were held.				
Total Live Performances (Actual)	862	Total Paid Attendance	0	
Total Gaming Days	521	Total Admission Tax	\$0	

Permitholder	County	Meet Period	Live Performances (Complete and counted toward full schedule)	Live Performances (Actual)	Gaming Days	Number of Games	Players' Awards Paid	Paid Attendance	Total Admission Tax
Dania Jai Alai (Dania Entertainment Center, LLC) 301 East Dania Beach Blvd. Dania Beach, FL 33004-3016	Broward	1/13/2016 to 4/28/2016	154	154	92	1,232	\$403,653	0	\$0
Dania Summer Jai Alai (Dania Entertainment Center, LLC) 301 East Dania Beach Blvd. Dania Beach, FL 33004-3016	Broward	5/4/2016 to 6/30/2016	60	60	34	490	\$201,827	0	\$0
Ft. Pierce Jai Alai (Fronton Holdings, LLC) 1750 South Kings Highway Ft. Pierce, FL 34945-3099	St. Lucie	6/1/2016 to 6/26/2016	40	40	22	320	\$161,768	0	\$0
Hamilton Jai Alai and Poker (Richmond Entertainment, Inc.) 6968 US Highway 129 South Jasper, FL 32052-6774	Hamilton	7/8/2015 to 8/14/2015	216	216	36	1,728	No information reported	0	\$0
Miami Jai Alai (Fronton Holdings, LLC) 3500 N.W. 37th Ave. Miami, FL 33142-4923	Dade	11/1/2015 to 4/30/2016	154	154	154	1,848	\$1,380,086	0	\$0
Ocala Poker and Jai Alai (Second Chance Jai Alai, LLC) 4601 N.W. Highway 318 Reddick, FL 32686	Marion	2/1/2016 to 2/29/2016 and 5/23/2016 to 5/27/2016	41	41	21	328	\$139,562	0	\$0
Orlando Jai Alai (RB Jai Alai, LLC) 6405 South Highway 17-92 Fern Park, FL 32730-2057	Seminole	7/13/2015 to 7/17/2015	40	40	5	320	\$2,280	0	\$0
Summer Jai Alai Partnership 3500 N.W. 37th Ave. Miami, FL 33142-4923	Dade	7/1/2015 to 10/31/2015 and 5/1/2016 to 6/30/2016 at Miami	157	157	157	1,884	\$1,362,247	0	\$0

Miscellaneous Revenue to State

(See Section 550.09511(4), Florida Statutes, for detail.)

Dania Jai Alai	\$142,640.00
Dania Summer Jai Alai	41,040.00
Ft. Pierce Jai Alai	34,858.45
Ocala Jai Alai	22,000.00
Orlando Jai Alai	21,200.00
Total	\$261,738.45



THOROUGHBRED PERMITHOLDERS



Florida continues to be a premier thoroughbred racing state with five permitholders that operated at three tracks located in Central and South Florida. A total of 331 completed performances, including charity and scholarship performances, were conducted during this past fiscal year, an increase of less than one percent from the previous fiscal year.

During Fiscal Year 2015/2016, handle on live thoroughbred performances decreased by approximately seven percent. Handle from intertrack wagering decreased approximately two percent. Simulcast handle wagered on broadcasts of performances from outside the state decreased by approximately 15 percent. Intertrack simulcast handle decreased by approximately three percent. Overall, total handle decreased by approximately six percent for the Florida thoroughbred industry.

Total thoroughbred revenue to the state during Fiscal Year 2015/2016, decreased by approximately nine percent from the prior year. The thoroughbred industry accounted for approximately 58.9 percent of Florida's total revenue and 59.5 percent of total handle from pari-mutuel performances.

Permitholders reported paying a total of \$89,923,698 in purses. For more detail on purses paid, please refer to the following information by permitholder. The Florida Thoroughbred Breeders' and Owners' Association did not dispute the amount of purses paid reported by the permitholders.

Total paid attendance decreased by eight percent from the prior year. The division reports only paid attendance and does not include free admissions or complimentary passes in its data.

Total Live Performances (Complete and counted toward a full schedule) ⁽¹⁾	331	Number of Races	3,345
(1) Performances where eight or more races were held.			
Total Live Performances (Actual)	331	Total Paid Attendance	93,242
Total Racing Days	331	Total Admission Tax	\$28,815

Permitholder	County	Meet Period	Live Performances (Complete and counted toward full schedule)	Live Performances (Actual)	Racing Days	Number of Races	Purses Paid	Paid Attendance	Total Admission Tax
Calder Race Course, Inc. (Churchill Downs, Inc.) 21001 N.W. 27th Ave. Miami Gardens, FL 33056-1461	Dade	10/7/2015 to 11/28/2015	40	40	40	395	\$9,673,140	0	\$0
Gulfstream Park Racing Association, Inc. (Stronach Group) 901 S. Federal Hwy Hallandale Beach, FL 33009-7124	Broward	7/1/2015 and 12/5/2015 to 5/8/2016 and 6/30/2016	112	112	112	1,174	\$39,014,488	0	\$0
Gulfstream Park Thoroughbred After Racing Program, Inc. (Stronach Group) 901 S. Federal Hwy Hallandale Beach, FL 33009-7124	Broward	7/3/2015 to 9/7/2015	40	40	40	413	\$13,202,200	0	\$0
Tampa Bay Downs, Inc. 11225 Race Track Rd. Tampa, FL 33626-3122	Hillsborough	7/1/2015 and 11/28/2015 to 5/8/16 and 6/30/2016	91	91	91	896	\$14,814,670	93,242	\$28,815
Tropical Park, LLC 21001 N.W. 27th Ave. Miami Gardens, FL 33056-1461	Dade	9/11/2015 to 10/3/2015 and 5/11/2016 to 6/26/2016 at Gulfstream Park	48	48	48	467	\$13,219,200	0	\$0



HARNESS PERMITHOLDERS



Pompano Park is the only permitholder conducting harness horse racing performances in the State of Florida. A total of 126 completed performances, including charity and scholarship performances, were conducted during this past fiscal year, which is the same as the previous year.

During Fiscal Year 2015/2016, handle wagered on live harness performances decreased by approximately one percent. Intertrack handle wagered on broadcasts of live Florida harness performances decreased by approximately three percent. Simulcast handle wagered on broadcasts of performances from outside the state decreased by approximately 13 percent while intertrack simulcast handle decreased by less than one percent. Overall, total handle decreased by approximately four percent for the Florida harness industry.

Total revenue to the state during Fiscal Year 2015/2016, experienced a minimal decrease from the prior fiscal year. The harness industry accounted for approximately 8.2 percent of Florida's total revenue and 5.9 percent of total handle from pari-mutuel performances.

Pompano Park reported paying \$8,933,223 in purses. For more detail on purses paid, please refer to the information below. The Florida Standardbred Breeders' and Owners' Association was able to confirm the amount of purses paid reported by Pompano Park.

The division reports only paid attendance and does not include free admissions or complimentary passes in its data.

Total Live Performances (Complete and counted toward a full schedule) ⁽¹⁾	126	Number of Races	1,276
(1) Performances where eight or more races were held.			
Total Live Performances (Actual)	126	Total Paid Attendance	0
Total Racing Days	126	Total Admission Tax	\$0

Permitholder	County	Meet Period	Live Performances (Complete and counted toward full schedule)	Live Performances (Actual)	Racing Days	Number of Races	Purses Paid	Paid Attendance	Total Admission Tax
Isle Casino and Racing at Pompano Park (PPI, Inc.) 1800 S.W. 3rd St. Pompano Beach, FL 33069	Broward	10/4/2015 to 5/31/2016	126	126	126	1,276	\$8,933,223	0	\$0



QUARTER HORSE PERMITHOLDERS



There were five permitholders conducting quarter horse racing performances at five tracks located in the State of Florida. In Fiscal Year 2015/2016, a total of 118 completed performances were conducted, an increase of approximately one percent from the previous fiscal year.

During Fiscal Year 2015/2016, handle wagered on live quarter horse performances increased by approximately seven percent. Intertrack handle wagered on broadcasts of performances increased by approximately 12 percent. There was no simulcast handle wagered on broadcasts of performances from outside the state, along with no intertrack simulcast handle. Overall, total handle increased by approximately eight percent for the Florida quarter horse industry.

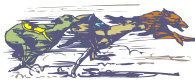
Total quarter horse revenue to the state during Fiscal Year 2015/2016, increased by approximately three percent. The quarter horse industry accounted for approximately 1.2 percent of Florida's total revenue and 0.3 percent of total handle from pari-mutuel performances.

Permitholders reported paying a total of \$5,961,000 in purses. For more detail on purses paid, please refer to the following information by permitholder. The Florida Quarter Horse Breeders' and Owners' Association was able to confirm the amount of purses paid reported by Hialeah Park.

The division reports only paid attendance and does not include free admissions or complimentary passes in its data.

Total Live Performances (Complete and counted toward a full schedule) ⁽¹⁾	118	Number of Races	974
<small>(1) Performances where eight or more races were held.</small>			
Total Live Performances (Actual)	120	Total Paid Attendance	0
Total Racing Days	65	Total Admission Tax	\$0

Permitholder	County	Meet Period	Live Performances (Complete and counted toward full schedule)	Live Performances (Actual)	Racing Days	Number of Races	Purses Paid	Paid Attendance	Total Admission Tax
Gretna Racing, LLC 501 Racetrack Drive Gretna, FL 32332	Gadsden	4/9/2016 to 6/12/2016	40	40	10	320	\$167,000	0	\$0
Hamilton Downs Horsetrack, LLC 2220 N.W County Road 143 Jennings, FL 32053	Hamilton	7/12/2015 to 7/16/2015	20	20	5	160	\$22,000	0	\$0
Hialeah Park (South Florida Racing Association, LLC) 2200 E. 4th Ave. Hialeah, FL 33010	Dade	12/26/2015 to 2/29/2016	38	39	39	332	\$5,600,000	0	\$0
Ocala Breeder's Sales Company, Inc. 1701 S.W. 60th Ave. Ocala, FL 34474-1800	Marion	1/26/2016	0	1	1	2	\$60,000	0	\$0
Oxford Downs (South Marion Real Estate Holdings, LLC) 17996 S. US Highway 301 Summerfield, FL 34491	Marion	6/6/2016 to 6/24/2016	20	20	10	160	\$112,000	0	\$0



SUMMARY

PARI-MUTUEL INDUSTRY

During Fiscal Year 2015/2016, the total handle wagered for all industries exceeded \$740 million, a decrease of approximately five percent from the prior fiscal year. Total pari-mutuel completed performances, including charity and scholarship performances, conducted during Fiscal Year 2015/2016 decreased by approximately four percent from the previous fiscal year.

The state realized revenue from performances of approximately \$9.8 million, a decrease of roughly ten percent from the prior fiscal year. Of the \$9.8 million collected, greyhound permitholders accounted for 29.1 percent, thoroughbreds for 58.9 percent, harness for 8.2 percent, jai alai for 2.6 percent, and quarter horse for 1.2 percent.

Total paid attendance decreased approximately eight percent from the prior year. The division reports only paid attendance and does not include free admission or complimentary passes in its data.



HORSE RACING

Promotional Programs for Florida-Bred Horses *

Florida breeder promotions and award programs are administered by private breeders' and owners' associations organized to promote ownership and breeding of race horses in the State of Florida. Each association conducts its own campaign to enhance the horse breeding industry in the state and provides breeders' and owners' awards of up to 20 percent of announced gross purses. The Florida Standardbred Breeders' and Owners' Association is funded by the breaks and uncashed tickets from live performances and one percent of the intertrack handle. The Quarter Horse Breeders' Association is funded by the breaks and the uncashed tickets from live races and one percent of the live and intertrack handle. The Florida Thoroughbred Breeders' and Owners' Association awards program is funded by 0.955 percent of the live, simulcast and intertrack handle, as well as 3.475 percent of the gross revenue from out-of-state wagers on Florida races.

To date, the Florida thoroughbred breeding industry has produced 50 national champions. Florida also produced "Affirmed," the eleventh horse to have swept the Triple Crown (1978). Ocala/Marion County, Florida, is home to some of the leading breeding farms in the country. The industry boasts 19 classic wins (Kentucky Derby, Preakness Stakes and Belmont Stakes), 26 Breeders' Cup Day champions and six horses of the year.

The Florida Thoroughbred Breeders' and Owners' Association (FTBOA) funds the Florida-bred Stakes Program, which is implemented at Florida's Thoroughbred racetracks. Through a percentage of pari-mutuel handle, Florida Thoroughbred permitholders contributed \$7,466,636 to the FTBOA during Fiscal Year 2015/2016. The FTBOA paid out \$5,786,595 in Breeders' Awards and \$2,378,047 through the Florida-bred Stakes Program. The Florida-bred Stakes Program includes "Florida Sire Stakes" at Gulfstream Park, "Sunshine Millions Preview" at Gulfstream Park West, "Florida Cup Day" at Tampa Bay Downs and additional funds for supplements to Florida-bred Preferred Stakes Races during the Gulfstream and Tampa Bay Downs' meets.

The Florida Standardbred Breeders' and Owners' Association, a non-profit organization and the only organized representative of Standardbred horsemen in the State of Florida, is the designated association for the allocation and distribution of funds for Florida-bred racing. Promotional activities include providing breeder and stallion awards for eligible Florida-bred horses during Pompano Park's 2015/2016 meet as well as awards for Florida Breeders' Stake races. The FSBOA also inaugurated a Breeder Incentive program in 2014 with the goal of offering Standardbred breeders a financial reward for the production of Florida-bred foals. This program will continue in future years. A series of races and awards were also provided for two and three-year-old Standardbreds to prepare for the winter meet at Pompano Park. The total amount of funds collected and distributed to the Florida Standardbred horsemen throughout the year exceeded \$741,218.

Section 550.2625(5)(a), Florida Statutes, designates the Florida Quarter Horse Breeders' and Owners' Association (FQHBOA) as the authorized organization to receive breeders and awards payments from the permitholders and make payments in accordance with Florida Statutes.

By agreement, Hialeah Park pays 2 percent of the total purse to FQHBOA for breeders' and owners' awards. This is in excess of statutory requirements. Other tracks pay a sum equal to the breaks plus one percent of all pari-mutuel pools conducted during their meets for supplementing purses and prizes for the general promotion of owning and breeding quarter horses in Florida as authorized in Florida Statutes.

During 2015/2016, \$120,000 was paid out to 60 owners and breeders in awards. Total awards have increased each fiscal year since the first awards paid in 2009/2010.

* Note: This promotional program information is provided by respective Breeders' and Owners' Associations.

**UNIVERSITY OF FLORIDA
COLLEGE OF VETERINARY MEDICINE RACING LABORATORY**

The Florida Racing Laboratory in the College of Medicine at the University of Florida is an International Organization for Standardization ISO 17025 accredited laboratory that employs various procedures to detect and identify prohibited drugs, medications, stimulants, depressants, hypnotics, local anesthetics, and drug-masking agents in the blood, urine or other bodily fluids of racing horses and greyhounds.

During Fiscal Year 2015/2016, the Laboratory received and processed 76,219 samples and performed 313,600 analyses. The vigilant monitoring of samples by the Laboratory serves to deter the use of prohibited drugs in racing animals in Florida.

	Horse Urine/Blood	Greyhound Urine ¹	Investigative
Samples Received	16,945	59,274	2
Samples Analyzed	17,001	39,031	2
Number of Analyses	77,268	236,332	2
Positives	343	18	N/A

¹ Volume Not Sufficient For Testing 19,654 samples (33.2% of total number of samples received).

DRUG POSITIVES FOR FISCAL YEAR 2015/2016		
Types of Positives (ARCI Drug Class)	Horse	Greyhound
Acepromazine metabolite (3)	5	0
Acepromazine metabolite (3), Methylprednisolone (4)	1	0
Amphetamine (1)	2	0
Benzoylcegonine (1)	0	1
Benzoylcegonine (1), Cocaine (1), Ecgonine Methyl Ester (1)	0	2
Benzoylcegonine (1), Ecgonine Methyl Ester (1)	1	0
Betamethasone (3)	30	0
Caffeine (2)	1	0
Caffeine (2), Theophylline (3)	1	0
Caffeine (2), Theophylline (3), Theobromine (4)	2	0
Clenbuterol (3)	22	0
Clenbuterol (3), Dexamethasone (4)	2	0
Clenbuterol (3), Methocarbamol (4)	1	0
Clenbuterol (3), Phenylbutazone (4)	1	0
Dantrolene, 5-hydroxy (4)	1	0
Despropionylfentanyl (1)	1	0
Dexamethasone (4)	70	1
Dexamethasone (4), Methocarbamol (4)	4	0
Dexamethasone (4), Xylazine (4)	1	0
Dextrorphan (4)	2	0
Dimethylsulfoxide (DMSO) (5)	5	9
Firocoxib (4)	4	0
Flunixin (4)	7	4
Flunixin (4), Ketoprofen (4)	1	0
Glycopyrrolate (3)	1	0
Ibuprofen (4)	4	0
Isoflupredone (4)	3	0
Isoflupredone (4), Methylprednisolone (4), Triamcinolone Acetonide (4)	1	0
Ketoprofen (4)	1	0
Lidocaine (2), 3-hydroxylidocaine (2)	1	0
Mepivacaine (2)	6	0
Mepivacaine, 3-hydroxy (2)	1	0
Methocarbamol (4)	14	0
Methylprednisolone (4)	14	0
Methylprednisolone (4), Betamethasone (4)	1	0
Methylprednisolone (4), Xylazine (4)	1	0
Omeprazole sulfide (5)	1	0
Oxycodone (1), Oxymorphone (1)	1	0
Oxymorphone (1), Phenylbutazone (4)	1	0
Phenylbutazone (4)	37	0
Phenylbutazone (4), Dexamethasone (4)	4	0
Phenylbutazone (4), DMSO (4)	1	0
Phenylbutazone (4), Flunixin (4)	32	0
Phenylbutazone (4), Flunixin (4), Dexamethasone (4)	2	0
Phenylbutazone (4), Flunixin (4), Ketoprofen (4)	8	0
Phenylbutazone (4), Flunixin (4), Methocarbamol (4)	3	0
Phenylbutazone (4), Flunixin (4), Methocarbamol (4), Dexamethasone (4)	1	0
Phenylbutazone (4), Flunixin (4), Xylazine (4)	1	0
Procaine (3)	0	1
Testosterone (3)	6	0
Testosterone (3), Nandrolone (3)	3	0
Triamcinolone Acetonide (4)	5	0
Triamcinolone Acetonide (4), Dexamethasone (4)	2	0
Xylazine (4)	22	0
Sub Totals	343	18
Grand Total		361

Class (1): Stimulant and depressant drugs that have the highest potential to affect performance and that have no generally accepted medical use in the racing horse.

Class (2): Drugs that have a high potential to affect performance, but less of a potential than drugs in Class 1.

Class (3): Drugs that may or may not have generally accepted medical use in the racing horse, but the pharmacology of which suggests less potential to affect performance than drugs in Class 2.

Class (4): This class includes therapeutic medications that would be expected to have less potential to affect performance than those in Class 3.

Class (5): This class includes therapeutic medications for which concentration limits have been established by the racing jurisdictions as well as certain miscellaneous agents such as dimethylsulfoxide (DMSO) and other medications as determined by the regulatory bodies.

FINANCIAL STATEMENTS

DIVISION OF PARI-MUTUEL WAGERING
SUMMARY OF STATE REVENUE FROM PARI-MUTUEL, CARDROOM,
SLOT ACTIVITIES, AND INDIAN GAMING COMPACT
FISCAL YEAR 2015/2016

State Revenue From Regular Performances	
Tax on Attendance	\$ 32,535
Daily License Fees	2,142,034
Tax on Handle	7,664,626
State Revenue From Pari-Mutuel Performances ⁽¹⁾	\$ 9,839,195
Other State Revenue	
Occupational Licenses	\$ 494,753
Fingerprint Fees	230,135
Escheated Tickets ⁽²⁾	810,464
Racing Scholarship Funds ⁽²⁾	1,225
PMW Trust Fund - Drug Fines	80,850
Miscellaneous Revenue	313,282
General Revenue Fund - Other Fines	62,580
Other State Revenue	\$ 1,993,289
Total Pari-Mutuel State Revenue	\$ 11,832,484
State Revenue From Cardrooms	
Table Fees	\$ 861,000
Gross Receipts ⁽³⁾	14,729,654
Occupational Licenses	162,117
Total State Revenue From Cardrooms	\$ 15,752,771
State Revenue From Slots	
Compulsive/Addictive Gambling Fee ⁽⁴⁾	\$ 2,250,000
Facility License Fee ⁽⁴⁾	18,000,000
Slot Taxes ⁽⁵⁾	187,977,011
Fingerprint Fees	14,123
Occupational Licenses	291,801
Miscellaneous Revenue	7,695
Miscellaneous Fines	5,900
Total State Revenue From Slots	\$ 208,546,530
Total State Revenue Generated From Pari-Mutuel, Cardroom, and Slots	\$ 236,131,785
State Revenue From Indian Gaming Compact	
Indian Gaming Compact ⁽⁶⁾	\$ 272,840,413
Indian Gaming Compact Reimbursements	334,153
Total State Revenue From Indian Gaming Compact	\$ 273,174,566
TOTAL STATE REVENUE GENERATED	\$ 509,306,351

(1) Daily license fees and taxes reported above are amounts collected and do not reflect amounts due.

(2) Escheated tickets and Racing Scholarship Funds are distributed to the Department of Education.

(3) One-half of cardroom gross receipts is deposited into the General Revenue Fund.

(4) Both amounts include payments from: Calder Casio and Race Course for 2015/2016 & 2016/2017, Gulfstream Park Racing and Casino, Mardi Gras Racetrack and Gaming Center, Isle Casino and Racing at Pompano Park, Flagler Dog Track and Magic City Casino, Miami Jai Alai, Dania Jai Alai, and South Florida Racing Association (Hialeah Park).

(5) Slot taxes are distributed to the Department of Education.

(6) Indian Gaming Compact payments are deposited into the General Revenue Fund.

DEPARTMENT OF BUSINESS & PROFESSIONAL REGULATION
DIVISION OF PARI-MUTUEL WAGERING
BALANCE SHEET
SPECIAL REVENUE FUND
FOR FISCAL YEAR ENDED JUNE 30, 2016

	<u>2016</u>		<u>2015</u>
ASSETS			
Cash with State Treasurer	\$ 3,024,475	\$	753,311
Investments at cost	10,248,947		3,254,344
Accounts receivable	15,193,779		368,284
Taxes receivable	1,513,022		15,699,389
Allowance for uncollectibles	(183,157)		(36,217)
Interest receivable	19,113		5,066
Due from state funds	<u>1,708</u>		<u>286,564</u>
TOTAL ASSETS	\$ <u>29,817,887</u>	\$	<u>20,330,741</u>
 LIABILITIES & FUND EQUITY			
Liabilities:			
Accounts payable	\$ 173,483	\$	98,554
Accrued salaries	319,085		282,993
Due to other funds	647,645		15,432
Due to other state agencies	19,057,227		14,092,160
Due to general revenue	651,506		685,418
Compensated absences	<u>-</u>		<u>-</u>
Total Liabilities	<u>20,848,946</u>		<u>15,174,556</u>
 Fund Equity			
Unreserved	<u>8,968,942</u>		<u>5,156,185</u>
Total Fund Equity	<u>8,968,942</u>		<u>5,156,185</u>
TOTAL LIABILITIES & FUND EQUITY	\$ <u>29,817,887</u>	\$	<u>20,330,741</u>

The financial statements and notes are for informational purposes only.

**DEPARTMENT OF BUSINESS AND PROFESSIONAL REGULATION
DIVISION OF PARI-MUTUEL WAGERING
STATEMENT OF REVENUES, EXPENDITURES & CHANGES IN FUND BALANCE - BUDGET & ACTUAL
SPECIAL REVENUE FUND
FOR FISCAL YEAR ENDED JUNE 30, 2016**

	FINAL BUDGET	2016 ACTUAL	VARIANCE	2015 ACTUAL
REVENUES:				
Fees, Charges, Commissions and Sales	\$ 19,552,155	\$ 21,511,478	\$ 1,959,323	\$ 19,301,397
Licenses and Permits	552,304	653,268	100,964	712,058
Taxes	197,324,441	202,941,692	5,617,251	198,093,473
Fines, Forfeits, Judgments and Settlements	212,335	87,804	(124,531)	95,112
Interest and Dividends, Net	29,537	98,876	69,339	122,153
Refunds	250,000	335,772	85,772	254,983
Miscellaneous Receipts	211,412	2,703,150	2,491,738	31,106
Total Revenues	218,132,184	228,332,040	10,199,856	218,610,282
EXPENDITURES				
CURRENT OPERATING				
Salaries	7,101,632	6,361,633	739,999	6,494,226
Other Personal Services	1,545,853	1,500,785	45,068	1,465,527
Other Operating Expenditures	940,875	758,755	182,120	842,849
Operation of Motor Vehicles	87,743	43,350	44,393	61,944
Risk Management	175,120	175,120	-	169,792
State Attorney-Slots	223,876	223,876	-	222,971
PMW Lab Services	2,416,000	2,416,000	-	2,266,000
PMW Compliance System	296,476	246,396	50,080	246,396
Tr/DMS/HR SVCS/STW Contract	59,051	59,051	-	58,635
Cardroom Tax Distribution	1,800,000	1,698,724	101,276	1,701,933
Other Contracted Services	84,228	19,674	64,554	29,530
Compulsive Gambling Prevention	930,000	930,000	0	930,000
Racing Animal Med Research	100,000	69,839	30,161	93,633
OPERATING CAPITAL OUTLAY	23,895	2,412	21,483	12,523
Acquisition of Motor Vehicles	80,002	75,001	5,001	20,385
Assessment for Fingerprinting	550,600	431,828	118,772	374,197
Service Charge to General Revenue	3,150,000	3,026,924	123,076	2,859,023
Refunds	75,000	23,019	51,981	13,173
Transfer to FDLE Slots Investigation	-	-	-	-
Transfers to Other Funds	188,594,212	189,956,896	(1,362,684)	184,079,657
Transfers to General Revenue	23,000,000	16,500,000	6,500,000	20,000,000
Total Expenditures	231,234,563	224,519,283	6,715,280	221,942,395
Excess (Deficiency) of Revenues Over (Under) Expenditures	(13,102,379)	3,812,757	3,484,575	(3,332,113)
FUND BALANCE JULY 1, 2014	5,156,185	5,156,185	-	8,488,298
FUND BALANCE JUNE 30, 2015	\$ (7,946,194)	\$ 8,968,942	\$ 3,484,575	\$ 5,156,185

The financial statements and notes are for informational purposes only.

**CARDROOM, PARI-MUTUEL, AND
SLOT STATUTE MATRIX**

STATUTE TOPIC	GREYHOUND	JAI ALAI	THOROUGHBRED	HARNESS	QUARTER HORSE
FEES					
Daily License Fees On Live / On-track Handle	\$80 per race. <u>550.0951(1)(a), F.S.</u>	\$40 per game. <u>550.0951(1)(a), F.S.</u>	\$100 per race. <u>550.0951(1)(a), F.S.</u>	\$100 per race. <u>550.0951(1)(a), F.S.</u>	\$100 per race. <u>550.0951(1)(a), F.S.</u>
Daily License Fees On Simulcast Handle	\$80 per race, but not to exceed \$500 per day. <u>550.0951(1)(a), F.S.</u>	\$40 per game, but not to exceed \$500 per day. <u>550.0951(1)(a), F.S.</u>	\$100 per race, but not to exceed \$500 per day. <u>550.0951(1)(a), F.S.</u>	\$100 race, but not to exceed \$500 per day. <u>550.0951(1)(a), F.S.</u>	\$100 per race, but not to exceed \$500 per day. <u>550.0951(1)(a), F.S.</u>
OUTS (ESCHEATS)					
Live / On-track Handle	Paid to the state of Florida. <u>550.1645(2), F.S.</u>	Paid to the state of Florida. <u>550.1645(2), F.S.</u>	Retained by permitholder. <u>550.2633(3), F.S.</u>	Paid to Florida Standardbred Breeders' and Owners' Association (FSBOA). <u>550.26165(1) and 550.2633(2)(a), F.S.</u>	Paid to Florida Quarter Horse Breeders' and Owners Association (FQHBOA). <u>550.26165(1) and 550.2633(2)(b), F.S.</u> Escheats from Arabian races are paid to Florida Arabian Horse Racing Promotion Account. <u>550.2633(2)(c), F.S.</u>
TAXES					
Tax On Admissions	15% of admission charge, or 10 cents, whichever is greater, for entrance to facility and grandstand. <u>550.0951(2)(a), F.S.</u> No tax is imposed on free passes or complimentary cards. <u>550.0951(2)(b) and (c), F.S.</u>	15% of admission charge, or 10 cents, whichever is greater, for entrance to facility and grandstand. <u>550.0951(2)(a), F.S.</u> No tax is imposed on free passes or complimentary cards. <u>550.0951(2)(b) and (c), F.S.</u>	15% of admission charge, or 10 cents, whichever is greater, for entrance to facility and grandstand. <u>550.0951(2)(a), F.S.</u> No tax is imposed on free passes or complimentary cards. <u>550.0951(2)(b) and (c), F.S.</u>	15% of admission charge, or 10 cents, whichever is greater, for entrance to facility and grandstand. <u>550.0951(2)(a), F.S.</u> No tax is imposed on free passes or complimentary cards. <u>550.0951(2)(b) and (c), F.S.</u>	15% of admission charge, or 10 cents, whichever is greater, for entrance to facility and grandstand. <u>550.0951(2)(a), F.S.</u> No tax is imposed on free passes or complimentary cards. <u>550.0951(2)(b) and (c), F.S.</u>
Tax On Live / On-track Handle	5.5% of handle, except for charity performances which is 7.6% of handle. <u>550.0951(3)(b)1., F.S.</u>	Effective July 1, 2000, a permitholder may not be taxed at a higher rate than 2%. <u>550.0951(3)(d), F.S.</u>	0.5% of handle. <u>550.09515(2)(a), F.S.</u>	0.5% of handle. <u>550.09512(2)(a), F.S.</u>	1% of handle. <u>550.0951(3)(a), F.S.</u>
Tax On Simulcast Handle	Allows permitholders to receive greyhound races from out-of-state, and are subject to taxation under 550.0951 and 550.09511. <u>550.3551(4), F.S.</u>	Allows permitholders to receive jai alai games from out-of-state, and are subject to taxation under 550.0951 and 550.09511. <u>550.3551(4), F.S.</u>	Allows permitholders to receive horse races from out-of-state, and are subject to taxation under 550.0951, 550.09512, and 550.09515. <u>550.3551(3) through 550.3551(3)(c), F.S.</u>	Allows permitholders to receive horse races from out-of-state, and are subject to taxation under 550.0951, 550.09512, and 550.09515. <u>550.3551(3) through 550.3551(3)(c), F.S.</u>	Allows permitholders to receive horse races from out-of-state, and are subject to taxation under 550.0951, 550.09512, and 550.09515. <u>550.3551(3) through 550.3551(3)(c), F.S.</u>

This matrix represents a summary of 2015 Statutes. Please refer to the cite noted by statutory topic for specific language governing pari-mutuel wagering.

STATUTE TOPIC	GREYHOUND	JAI ALAI	THOROUGHBRED	HARNESS	QUARTER HORSE
Tax On Intertrack and Intertrack Simulcast Handle	5.5% of intertrack and intertrack simulcast handle; except for the intertrack handle from charity performances at a guest track within the market area of the host, the tax is 7.6%. <u>550.0951(3)(b)1 and 550.0951(3)(c)1, F.S.</u>	7.1% of intertrack and intertrack simulcast handle. <u>550.0951(3)(b)2. and 550.0951(3)(c)1., F.S.</u>	2% of intertrack handle. <u>550.0951(3)(c)1., F.S.</u>	3.3% of intertrack handle. <u>550.0951(3)(c)1., F.S.</u>	2% of intertrack handle. <u>550.0951(3)(c)1., F.S.</u>
	0.5% of intertrack and intertrack simulcast handle, if the guest is located outside market area of host and within market area of thoroughbred track conducting a live meet. <u>550.0951(3)(c)1., F.S.</u>	0.5% of intertrack and intertrack simulcast handle, if the guest is located outside market area of host and within market area of thoroughbred track conducting a live meet. <u>550.0951(3)(c)1., F.S.</u>	2.4% of intertrack simulcast handle. <u>550.0951(3)(c)1. and 550.09515(5), F.S.</u>	1.5% of intertrack simulcast handle. <u>550.0951(3)(c)1., F.S.</u>	2.4% of intertrack simulcast handle. <u>550.0951(3)(c)1. and 550.09515(5), F.S.</u>
	3.9% of intertrack and intertrack simulcast handle, for permitholders located in an area of the state where there are only 3 greyhound permitholders, located in 3 contiguous counties. <u>550.0951(3)(c)2., F.S.</u>	3.3% of intertrack and intertrack simulcast handle, if permitholder restricted from operating live on a year-round basis, and tax paid on intertrack handle exceeds that paid during 92/93 State Fiscal Year. <u>550.09511(3)(a), F.S.</u>	0.5% of intertrack and intertrack simulcast handle, if host and guest are thoroughbred permitholders, or if the guest is located outside market area of host and within market area of thoroughbred track conducting a live meet. <u>550.0951(3)(c)1., F.S.</u>	0.5% of intertrack and intertrack simulcast handle, if the guest is located outside market area of host and within market area of thoroughbred track conducting a live meet. <u>550.0951(3)(c)1., F.S.</u>	0.5% of intertrack and intertrack simulcast handle, if the guest is located outside market area of host and within market area of thoroughbred track conducting a live meet. <u>550.0951(3)(c)1., F.S.</u>
3.9% of intertrack and intertrack simulcast handle, for greyhound permitholders located in the same market area specified in 550.615(9). <u>550.0951(3)(c)2., F.S.</u>	6.1% of intertrack and intertrack simulcast handle, for jai alai permitholders located in the market area as specified in 550.615(6) or (9), until the tax paid on intertrack handle in the current state fiscal year exceeds that paid during 92/93 State Fiscal Year, then tax on handle is 2.3%. <u>550.0951(3)(c)2., F.S.</u>	0.5% of intertrack simulcast handle, if guest track is a thoroughbred track located more than 35 miles from host track. <u>550.09515(5), F.S.</u>			
CHARITY PERFORMANCES					
	Maximum of five days. <u>550.0351(1), F.S.</u> Permitholders are allowed to conduct one additional day to be designated as "Greyhound Adopt-A-Pet Day." Proceeds are paid to "bona fide organizations" that promote the adoption of greyhounds. <u>550.1648(2), F.S.</u> Permitholders shall pay from any source, including charity performances, not less than 10% of tax credit from escheated tickets to a bona fide greyhound adoption program. <u>550.1647, F.S.</u>	Maximum of five days. <u>550.0351(1), F.S.</u> Permitholders are allowed to conduct two additional performances known as "Retired Jai Alai Players' Charity Day" for a fund to benefit retired jai alai players. <u>550.0351(8), F.S.</u>	Maximum of five days. <u>550.0351(1), F.S.</u> One additional scholarship day to tracks located in Hillsborough County for the benefit of Pasco-Hernando Community College. <u>550.0351(6)(a) and 550.0351(6)(b), F.S.</u>	Maximum of five days. <u>550.0351(1), F.S.</u>	Maximum of five days. <u>550.0351(1), F.S.</u>

This matrix represents a summary of 2015 Statutes. Please refer to the cite noted by statutory topic for specific language governing pari-mutuel wagering.

STATUTE TOPIC	GREYHOUND	JAI ALAI	THOROUGHBRED	HARNESS	QUARTER HORSE
TAX CREDITS & EXEMPTIONS					
(excluding charity performances, unless otherwise noted)	<p>Tax exemption of \$360,000 per state fiscal year, or \$500,000 for three permitholders that held a full live schedule in 1995, and closest to another state authorizing greyhound racing. <u>550.09514(1), F.S.</u></p> <p>Tax credit each state fiscal year equal to daily license fee on live races in previous state fiscal year. <u>550.0951(1)(a), F.S.</u></p> <p>Allows each permitholder that cannot utilize the full amount of the tax exemption or daily license fee tax credit, elect once per state fiscal year to transfer the unused portion to a greyhound permitholder acting as a host track for intertrack wagering. <u>550.0951(1)(b), F.S.</u></p> <p>Tax credit each state fiscal year in an amount equal to the amount remitted in escheated tickets in prior state fiscal year. <u>550.1647, F.S.</u></p>	<p>A permitholder that has incurred tax on handle and admissions that exceeds its operating earnings is entitled to credit the excess amount of taxes against its next ensuing meets. <u>550.09511(1)(b), F.S.</u></p> <p>Tax credit each state fiscal year equal to 25% of amount remitted in escheated tickets in prior state fiscal year. Funds equal to the tax credit shall be paid by the permitholder to the National Association of Jai Alai Frontons. <u>550.1646, F.S.</u></p> <p>\$30,000 per performance exemption if live handle during the preceding state fiscal year was less than \$15 million. <u>This exemption applies to charity performances.</u> <u>550.09511(2)(a)1., F.S.</u></p> <p>A permitholder conducting fewer than 100 performances in any calendar year shall pay to the state the same aggregate amount of daily license fees on live games, admissions tax, and tax on live handle as that paid during the most recent prior calendar year in which at least 100 live performances were conducted. <u>550.09511(4), F.S.</u></p>	<p>Permitholders are allowed a credit of up to 1% of the paid taxes for the previous taxable year. The credit, if taken, is applied against taxes on live handle due for a taxable year under this section, and is paid directly to the Jockeys' Guild by the permitholders. <u>550.09515(6), F.S.</u></p>		

This matrix represents a summary of 2015 Statutes. Please refer to the cite noted by statutory topic for specific language governing pari-mutuel wagering.

STATUTE TOPIC	STATUTE REFERENCE	SUMMARY
FEES		
Cardroom Table Fees	849.086(5)(d), F.S.	Annual fee for each facility is \$1,000 for each table to be operated at the cardroom.
TAXES		
Tax On Cardroom Gross Receipts	849.086(13)(a), F.S.	Each cardroom operator shall pay a tax to the state of 10% of the cardroom operation's monthly gross receipts. Pursuant to Section 849.086(13)(c), F.S., one-half credited to Pari-Mutuel Wagering Trust Fund and one-half being credited to the General Revenue Fund.
Tax On Admissions	849.086(13)(b), F.S.	15% of admission charge, or 10 cents, whichever is greater, for entrance to the cardroom. This tax only applies if a separate admission fee is charged for entry into the cardroom facility. If a single admission fee is charged allowing entry to both or either the pari-mutuel facility and the cardroom facility, the tax is payable only once and shall be payable pursuant to Chapter 550.
FINES		
Administrative Fine	849.086(14)(c), F.S.	An administrative fine up to \$1,000 for each violation may be imposed on any person who has violated or failed to comply with the provisions of Section 849.086, F.S.
ANNUAL DISBURSEMENT TO COUNTIES AND MUNICIPALITIES		
Annual Disbursement To Counties and Municipalities	849.086(13)(h), F.S.	One-quarter of moneys deposited into the Pari-Mutuel Wagering Trust Fund shall, by October 1 of each year, be distributed to the local counties or municipalities where the approved cardrooms are located.

This matrix represents a summary of 2015 Statutes. Please refer to the cite noted by statutory topic for specific language governing operation of cardrooms.

STATUTE TOPIC	STATUTE REFERENCE	SUMMARY
FEES		
Slot License Fee	551.106(1)(a), F.S.	Annual fee for each slot machine facility is \$2 million paid with the initial license application and annual thereafter on the anniversary date of the issuance of the initial license.
Compulsive or Addictive Gambling Prevention Program Fee	551.118(3), F.S.	Annual fee for each slot machine facility is \$250,000 paid at the same time the annual license fee is due, and annual thereafter.
TAXES		
Tax on Slot Revenue	551.106(2)(a) and 551.106(3), F.S.	The tax rate on slot machine revenues is 35%. Payment for the tax on slot machine revenues shall be remitted by 3 p.m. on the 5th day of each calendar month for taxes imposed and collected for the preceding calendar month. If the 5th day of the calendar month falls on a weekend, payments shall be remitted by 3 p.m. the first Monday following the weekend.
FINES		
Failure to Pay Slot Tax Fine	551.106(4), F.S.	Up to \$10,000 for each day tax payment is not remitted timely.
Civil Fine	551.107(11), F.S.	The division may impose a civil fine of up to \$5,000 for each violation of this chapter or the rules of the division.
False Statement Fine	551.109(1), F.S.	Up to a \$10,000 fine or civil penalty for any person who knowingly makes or causes to be made, or aids, assists, or procures another to make a false statement in any report, disclosure, application, or any document required under Chapter 551, or any rule adopted under Chapter 551.
Unauthorized Possession of Slot Machines Fine	551.109(2), F.S.	Up to a \$10,000 administrative fine or civil penalty for any person who possesses a slot machine without the license required by Chapter 551, or who possesses a slot machine at any location other than at the slot machines licensee's facility.
PENALTIES		
Slot Machine Licensee Civil Penalties	551.117, F.S.	Up to a \$100,000 civil penalty for each count or separate offense against the slot machine licensee for violation of Chapter 551, or any rule adopted by the division.

This matrix represents a summary of 2015 Statutes. Please refer to the cite noted by statutory topic for specific language governing slot operations.