

FLORIDA DEPARTMENT OF BUSINESS AND PROFESSIONAL REGULATION

Division of Pari-Mutuel Wagering 86th Annual Report Fiscal Year 2016-2017



Rick Scott
Governor

Jonathan Zachem
Secretary

Robert Ehrhardt
Director

www.myfloridalicense.com/dbpr/pmww

2601 Blair Stone Road
Tallahassee, Florida 32399
Phone: 850.488.9130

**DEPARTMENT OF BUSINESS AND PROFESSIONAL REGULATION
 DIVISION OF PARI-MUTUEL WAGERING
 COMPREHENSIVE ANNUAL REPORT
 FISCAL YEAR ENDING JUNE 30, 2017
www.myfloridalicense.com/dbpr/pmw**

INTRODUCTORY SECTION

Overview and Explanation of Report Terminology	2
Division Overview.....	3

STATISTICAL SECTION

Pari-Mutuel Statistical Data

Fiscal Years Comparative Data	6
Graphs - Historical Pari-Mutuel Wagering Activity	7
Components of Pari-Mutuel Handle From Performances	10
Total State Revenue From Performances	11
Total Regular and Charity/Scholarship Handle.....	12
Total Intertrack Wagering Handle by Guest.....	13
Charity and Scholarship Performances, Racing Scholarship Trust Fund, and Abandoned Winning Tickets.....	16

Cardroom Statistical Data

Cardroom Comparative Data.....	17
Components of Cardroom Revenue by Association.....	18

Slot Statistical Data

Slot Comparative Data.....	19
Revenue per Machine Compared to Average Number of Machines by Month.....	20

DATA BY PERMITHOLDER/FACILITY

Contact and Operating Information by Permitholder/Facility.....	23
Promotional Programs for Florida-Bred Horses.....	28
Drug Positives Statistical Data.....	29

FINANCIAL STATEMENTS

Summary of State Revenue from Cardroom, Pari-Mutuel, Slot Activities, and Indian Gaming Compact.....	30
Balance Sheet - Special Revenue Fund.....	31
Statement of Revenue, Expenditures & Changes in Fund Balance – Budget & Actual – Special Revenue Fund	32

CARDROOM, PARI-MUTUEL, AND SLOT STATUTE MATRIX

Summary of Pari-Mutuel Handle Distribution.....	33
Summary of Cardroom Distribution.....	36
Summary of Slot Distribution.....	37

INTRODUCTION

OVERVIEW

This annual report encompasses the fiscal year which began July 1, 2016, and ended June 30, 2017. This is the 86th annual report in the series. The first annual report was issued for Fiscal Year 1931/1932, the initial year of legalized pari-mutuel wagering. In Florida, pari-mutuel wagering is authorized for horse racing, harness horse racing, quarter horse racing, greyhound racing, jai alai games, and cardroom poker games. Additionally, slot machine gaming at pari-mutuel facilities is authorized in Broward and Miami-Dade counties. Florida is one of the primary pari-mutuel states in the nation. Florida is also the only state in the United States where live jai alai games are conducted. As of June 30, 2017, there were 31 pari-mutuel facilities located throughout the state, with one of the facilities holding both limited intertrack wagering and pari-mutuel wagering. This annual report, which is required by Florida law, is intended to inform the Governor, the Legislature, the industry, and other interested parties of wagering activities at authorized pari-mutuel facilities. The report is organized into five primary sections:

- 1. Introductory Section** – An overview of the Division of Pari-Mutuel Wagering and a report of events that occurred impacting the division's oversight of permits or events that affected the operation of facilities.
- 2. Statistical Section** – Details various cardroom, pari-mutuel, and slot statistical data by individual racing association or fronton.
- 3. Data by Association/Facility** – Includes operating information by association/permit, promotional programs for Florida-bred horse, and impermissible substance positives statistical data.
- 4. Financial Section** – Official financial statements of the Division of Pari-Mutuel Wagering.
- 5. Statute Matrix** – A table that summarizes the statutes regarding the taxes and fees applicable to pari-mutuel wagering and cardroom activity. The matrix includes a summary of the statutes regarding the taxes, fees, fines, and penalties with respect to slot machine gaming.

EXPLANATION OF REPORT TERMINOLOGY

Florida law requires intertrack wagers to be combined with the wagering pools of the host or the broadcasting Florida track or fronton. The law also requires that the host take-out on intertrack wagers be the same as for on-track wagers; however, the distribution of the take-out may be different. The tax structure for on-track and intertrack wagering is explained in more detail in the statute matrix section.

Pursuant to Section 550.002(13), Florida Statutes, handle is defined as the aggregate contributions to pari-mutuel pools. For purposes of this report, the four types of handle detailed in this report are as follows:

- **Live Ontrack:** Handle from live races/games at the track/fronton.
- **Simulcast:** Handle from races/games originating from out-of-state and broadcast to a Florida track/fronton.
- **Intertrack:** Handle from where a Florida track/fronton (acting as host) broadcast live races/games to other Florida tracks/frontons.
- **Intertrack Simulcast:** Handle from rebroadcasting of simulcast signals received by a Florida track/fronton to other Florida tracks/frontons.

All intertrack and intertrack simulcast handle is detailed by the host permitholder in this report. These schedules reflect combined wagering statistics for all guest facilities that received broadcasts and conducted wagering and included in the wagering pools of the host. For host permitholders, a summary of intertrack handle components for each guest is shown in the statistical section of this report. The schedules of intertrack wagering handle by guest include data on wagers from intertrack handle and intertrack simulcast handle. Any paid attendance, admission tax, purses paid, or players' awards paid are detailed in the data by association/permit section of the report.

THE DIVISION OF PARI-MUTUEL WAGERING

The Division of Pari-Mutuel Wagering is a program area of the Department of Business and Professional Regulation within the Executive Branch of Florida's government. The division is charged with regulating Florida's pari-mutuel, cardroom, and slot machine gaming industries, as authorized by Chapters 550, 551, and Section 849.086, Florida Statutes, as well as collecting and safeguarding associated revenues due to the state. Authorized pari-mutuel events include harness racing, quarter horse racing, thoroughbred racing, greyhound racing, and jai alai. Pari-Mutuel Wagering was originally authorized by the Legislature in 1931. Since that time, the division has evolved from a racing commission into a professional regulatory organization overseeing a complex and dynamic industry located throughout the state. Additionally, the Division of Pari-Mutuel Wagering was designated by the Florida Legislature as the State Compliance Agency with the authority to carry out the state's oversight responsibilities in accordance with the provisions outlined in the Compact between the State of Florida and the Seminole Tribe of Florida.

OFFICE OF THE DIRECTOR

The Office of the Director provides leadership, oversight, and administration of the six functional areas within the division. Specific responsibilities include budget planning, rule promulgation, policy development, analysis of proposed legislation, strategic planning, fleet management, staff development, and enforcement of administrative actions. Additionally, the Office of the Director ensures that all areas of the division operate in a cooperative effort to provide efficient regulatory oversight of the industry.

The division's structure includes six functional areas which act under the management of the Office of the Director. These functional areas include Revenue and Financial Analysis, Auditing, Operations, Investigations, Slot Operations, and State Compliance Agency. Each area focuses on a different aspect of regulation within the cardroom, pari-mutuel, and slot machine gaming industry, as well as the state's Compact with the Seminole Tribe of Florida, in an effort to protect state revenues and maintain the public's confidence in the integrity of the wagering activity. Additionally, the Office of the Director processes applications for the issuance of all pari-mutuel permit holder Annual Operating Dates Licenses, Cardroom Operator Licenses, and Slot Machine Licenses to authorized facilities.

OFFICE OF OPERATIONS

All individuals and businesses who work or conduct business at a racetrack, fronton, cardroom, or slot machine facility and who have access to wagers, restricted areas, and/or racing animals, must obtain an occupational license issued by the division. Every occupational licensee is fingerprinted upon initial licensure and every three years thereafter. Each set of fingerprints is submitted electronically to the Florida Department of Law Enforcement and the Federal Bureau of Investigation for processing. During Fiscal Year 2016/2017, the Operations' Licensing Section processed 17,623 occupational license applications for businesses and individuals, of which 3,127 were related to cardroom operations, 10,765 were related to racing operations, and 3,731 were related to slot machine operations.

The Office of Operations is also responsible for ensuring that the day-to-day operation of races and games is conducted in accordance with Florida's pari-mutuel statutes and rules. The State Stewards monitor each horserace and conduct inquiries and hearings for alleged violations of the state's pari-mutuel statutes and rules. The Stewards and Hearing Officers issued 31 rulings and 46 consent orders, assessed fines totaling \$23,475, and imposed 7 license suspensions for violations during Fiscal Year 2016/2017.

Operations' staff collects urine and blood samples from racing animals which are sent to the University of Florida, College of Medicine Racing Laboratory for analysis. The Racing Laboratory performs its services under an annual contract with the division. State veterinarians and veterinary assistants collected 67,935 samples that included 53,061 greyhound urine samples and 14,874 horse urine and blood samples. Additionally, division investigators submitted 5 investigative samples during Fiscal Year 2016/2017. There were 269 positive findings of impermissible substances in the samples collected.

OFFICE OF AUDITING

The Office of Auditing is responsible for conducting various audits to ensure the integrity of wagering activity and protect the wagering public by assuring that cardroom, pari-mutuel, and slot machine wagering is conducted in compliance with the Florida Statutes and Florida Administrative Code. Such compliance issues include pari-mutuel broadcast exchanges, verification that takeout/commissions are consistent with notification requirements, interstate wagering restrictions, identification of fraudulent activity, verification that statutory accounting procedures are utilized, oversight of the commingling of wagering pools, transmission of pari-mutuel information, proper payments to winning pari-mutuel patrons, and approval of totalisator security plans and software upgrades. Additionally, the auditing staff maintains primary oversight for cardroom operations, which includes: auditing internal control procedures, auditing jackpot accounts, monitoring daily operations, coordinating inspections, and auditing for compliance. The auditing team is responsible for communicating with the licensed totalisator companies and for the input of pari-mutuel handle and wagering information into the division's Central Management System (CMS).

During Fiscal Year 2016/2017, the auditing team conducted 19 greyhound purse audits, 19 greyhound adoption proceeds audits, 26 mutuels audits, 27 escheat audits, 26 cardroom audits, and eight slot audits. Audits of malfunction reports were also conducted.

OFFICE OF INVESTIGATIONS

The Office of Investigations examines statutory and rule violations that occur at pari-mutuel facilities, cardrooms, and slot machine gaming locations. Investigative staff is responsible for investigating Class I drug positives analyzed and identified by the University of Florida, College of Medicine Racing Laboratory and deaths of racing animals that occur at pari-mutuel facilities. The investigations include patron complaints, complaints of animal cruelty, and the use of performance altering medications and/or illegal substances during races. A case may result in issuance of a warning letter, consent order, administrative fine, license suspension, license revocation, hearing before a designated hearing officer, or referral to either regulatory or law enforcement agencies for criminal prosecution. During Fiscal Year 2016/2017, there were 615 investigations conducted.

The investigation staff also conducts background examinations of potential permit holders which involves an in-depth review of the applicant's financial records in order to ensure compliance with sections 550.054, 550.1815, and 849.086, Florida Statutes. Additionally, investigators perform background reviews of Pari-Mutuel Wagering Occupational License requests from applicants with criminal records requesting a waiver from the Division Director in accordance with section 550.105, Florida Statutes.

The investigation staff also conducted 4,639 inspections of pari-mutuel and slot machine facilities, including cardrooms, greyhound kennels and horse stables; both prior to opening as well as throughout the operating year.

OFFICE OF SLOT OPERATIONS

The Slot Operations' staff is responsible for overseeing state personnel located at each of the four pari-mutuel facilities in Broward County and each of the four pari-mutuel facilities in Miami-Dade County that have slot machine gaming. To protect the integrity of slot machine gaming activity, the Slot Operations' staff oversees the day-to-day operations at the slot machine facilities, performs daily revenue reconciliations, verifies that every slot machine has been certified by an independent testing laboratory, issues slot machine occupational licenses to individuals, and ensures slot machine gaming activity is in compliance with the requirements of chapter 551, Florida Statutes, chapter 61D-14, Florida Administrative Code, as well as the internal controls of the individual facilities.

During Fiscal Year 2016/2017, the Slot Operations' staff completed 6,392 inspections. Of those, 75 items were found to be non-compliant, of which five were turned over to Investigations and to the Department's Office of the General Counsel for formal proceedings. Slot machine facilities were notified of 71 observations so that appropriate internal action, including employee disciplinary action, advanced training and/or re-training of facility personnel could occur.

There were 1,062 shipments of authorized slot machines and components, which required the verification of 1,288 slot machines and 5,072 components. The Slot Operations' staff authorized and monitored 10,223 slot machine conversions, denomination and/or game theme changes, slot machine relocations and other related slot machine changes.

OFFICE OF REVENUE AND FINANCIAL ANALYSIS

The Revenue and Financial Analysis staff is responsible for safeguarding and accounting for state revenues in accordance with Florida Statutes and the Florida Administrative Code, as it relates to cardroom, pari-mutuel, and slot gaming activities. The staff develops revenue projections for the Revenue Estimating Conferences, maintains cash flow statements for timely transfer to the State's General Revenue Fund and to the Education Enhancement Trust Fund, provides oversight of the division's budget, develops the annual report, and determines fiscal impacts on proposed legislation impacting the industry.

During Fiscal Year 2016/2017, \$236,321,489 in state revenues pertaining to cardroom, pari-mutuel, and slot machine gaming were collected. The Revenue and Financial Analysis staff also reconciled 721 permitholder monthly remittance reports, conducted 18 charity day audits and 28 uniform annual report audits. The Revenue and Financial Analysis staff compiles statistical information for cardroom, pari-mutuel, and slot machine gaming, and performs analyses requested by the department, the Executive Office of the Governor, the Legislature and the industry.

STATE COMPLIANCE AGENCY

The Gaming Compact between the Seminole Tribe of Florida and the State of Florida, 75 FR 38833, was executed by the Governor on April 7, 2010, and ratified by the United States Department of the Interior on July 7, 2010. Pursuant to section 285.710, Florida Statutes, the Division of Pari-Mutuel Wagering was designated by the Florida Legislature as the State Compliance Agency with the authority to carry out the State's oversight responsibilities in accordance with the provisions outlined in the Compact. The Seminole Tribe of Florida presently operate six casinos, with authority for seven, located in Broward, Hillsborough, Collier, Glades, and Hendry counties.

During Fiscal Year 2016/2017, the State Compliance Agency completed 72 inspections of tribal gaming facilities spanning over 720 man hours. Additionally, \$288,840,354, in revenue sharing with the Tribe was collected. Of this, \$8,185,212 was distributed to local governments, including both counties and municipalities, as required by section 285.710, Florida Statutes.

A similar Compact does not exist with the Miccosukee Tribe, and therefore they continue to operate exclusively under Federal jurisdiction. For additional information on the Miccosukee's gaming operations, contact the National Indian Gaming Commission, www.nigc.gov, or the United States Department of Interior, 1441 L Street N.W., Suite 9100, Washington, D.C. 20005-3584, Telephone 202.632.7003.

STATISTICAL SECTION

FISCAL YEARS COMPARATIVE DATA

Beginning with the 1931/1932 Fiscal Year, the state began collecting taxes on pari-mutuel wagering. In most recent years, pari-mutuel handle has steadily declined. During that initial year, the pari-mutuel industry operated 462 racing days in Florida, which resulted in state revenue of \$737,301, total paid attendance of 1,157,161, and total pari-mutuel handle of \$17,365,424.

Since Fiscal Year 1931/1932, approximately \$76.2 billion in pari-mutuel handle wagered resulted in \$4.39 billion in state revenue. This fiscal year, the pari-mutuel industry operated 3,415 racing days, which resulted in state revenue of \$10,926,309, total paid attendance of 333,620, and total pari-mutuel handle of \$717,555,785.

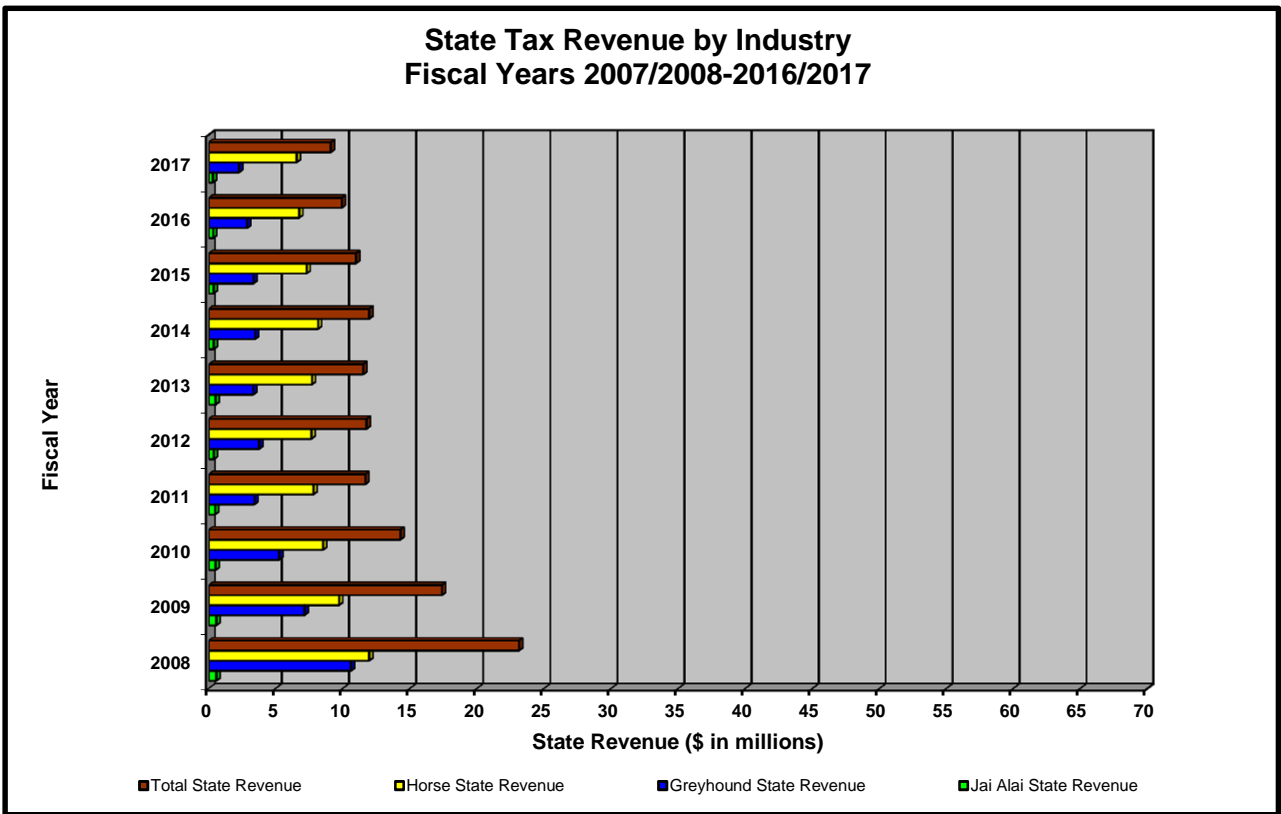
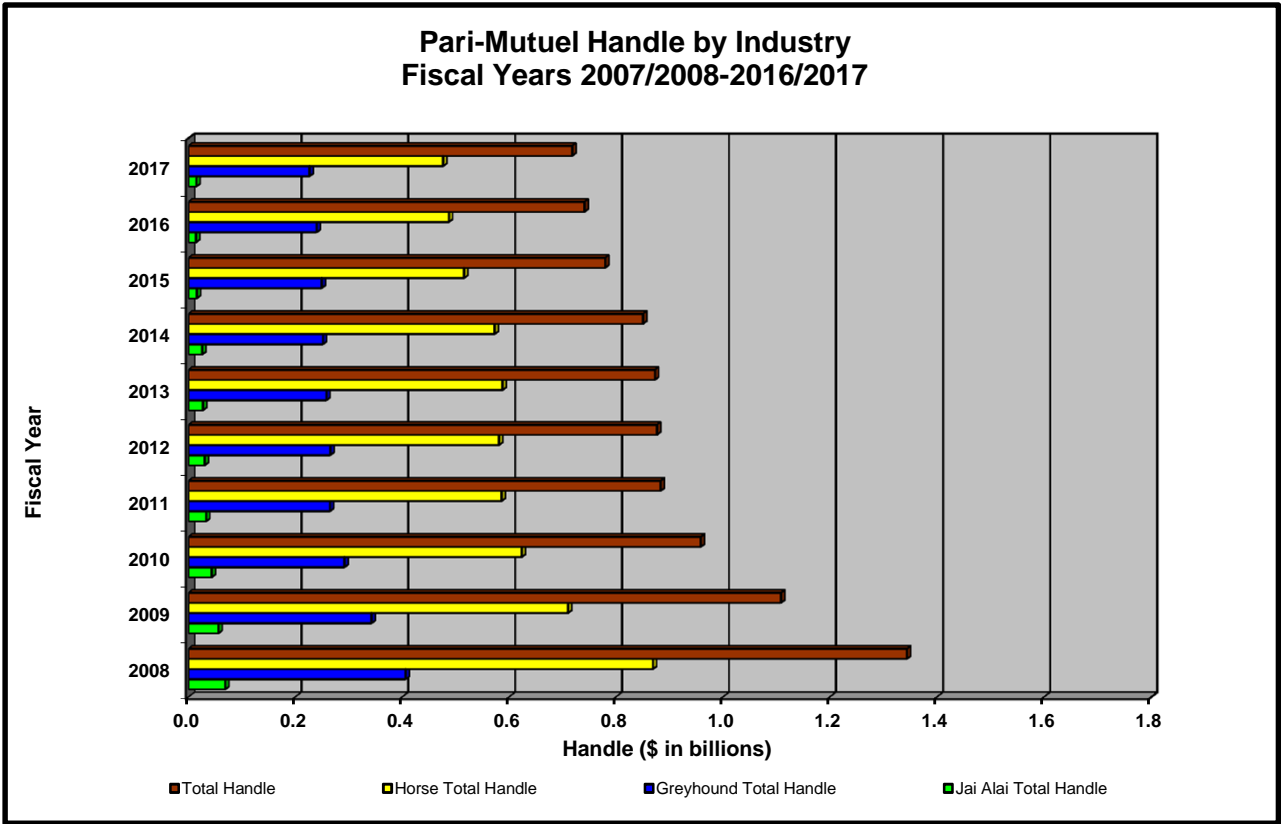
Over the last 10 years, pari-mutuel wagering has experienced a 46.6 percent decline in handle, and total state revenue has decreased 57.4 percent, along with a 29.7 percent decrease in the number of racing days. Shown below is a summary of pari-mutuel handle and state revenue for Fiscal Years 2007/2008 through 2016/2017.

PARI-MUTUEL HANDLE AND STATE REVENUE SUMMARY

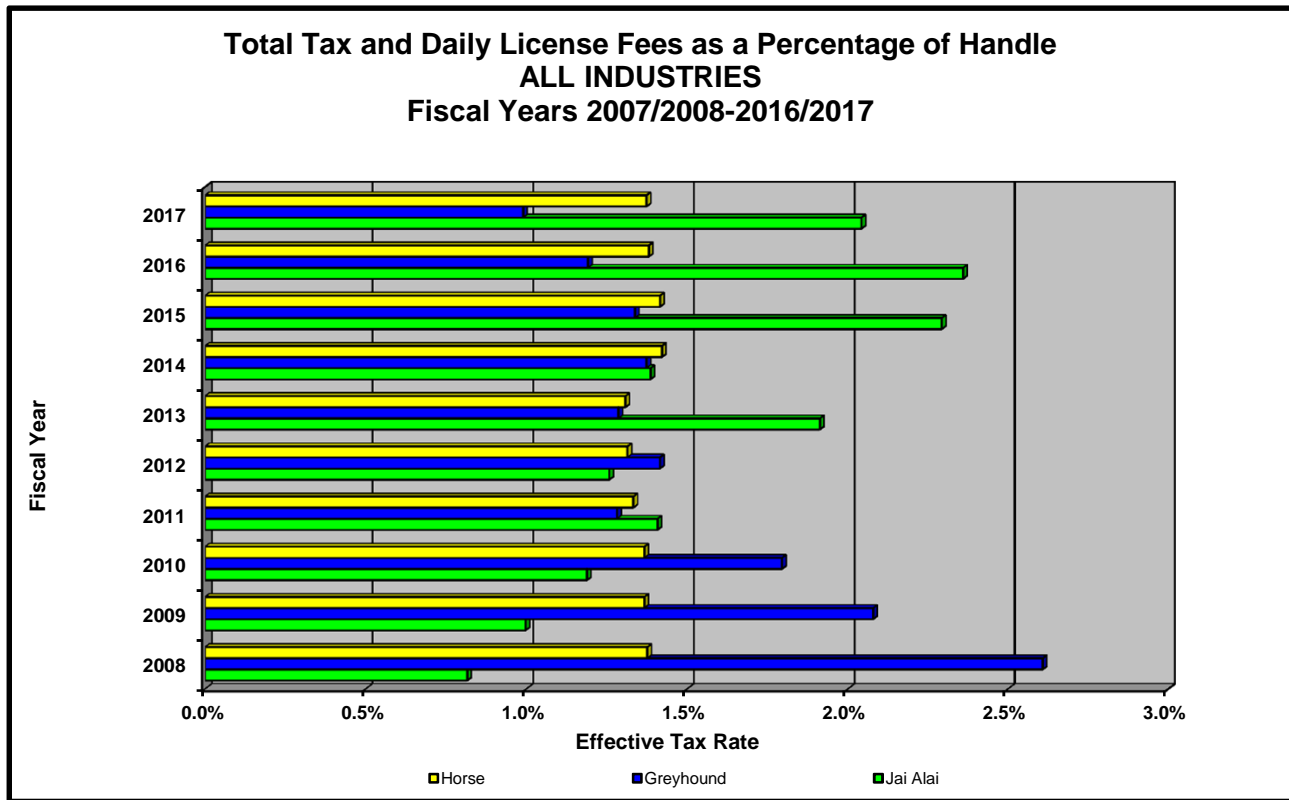
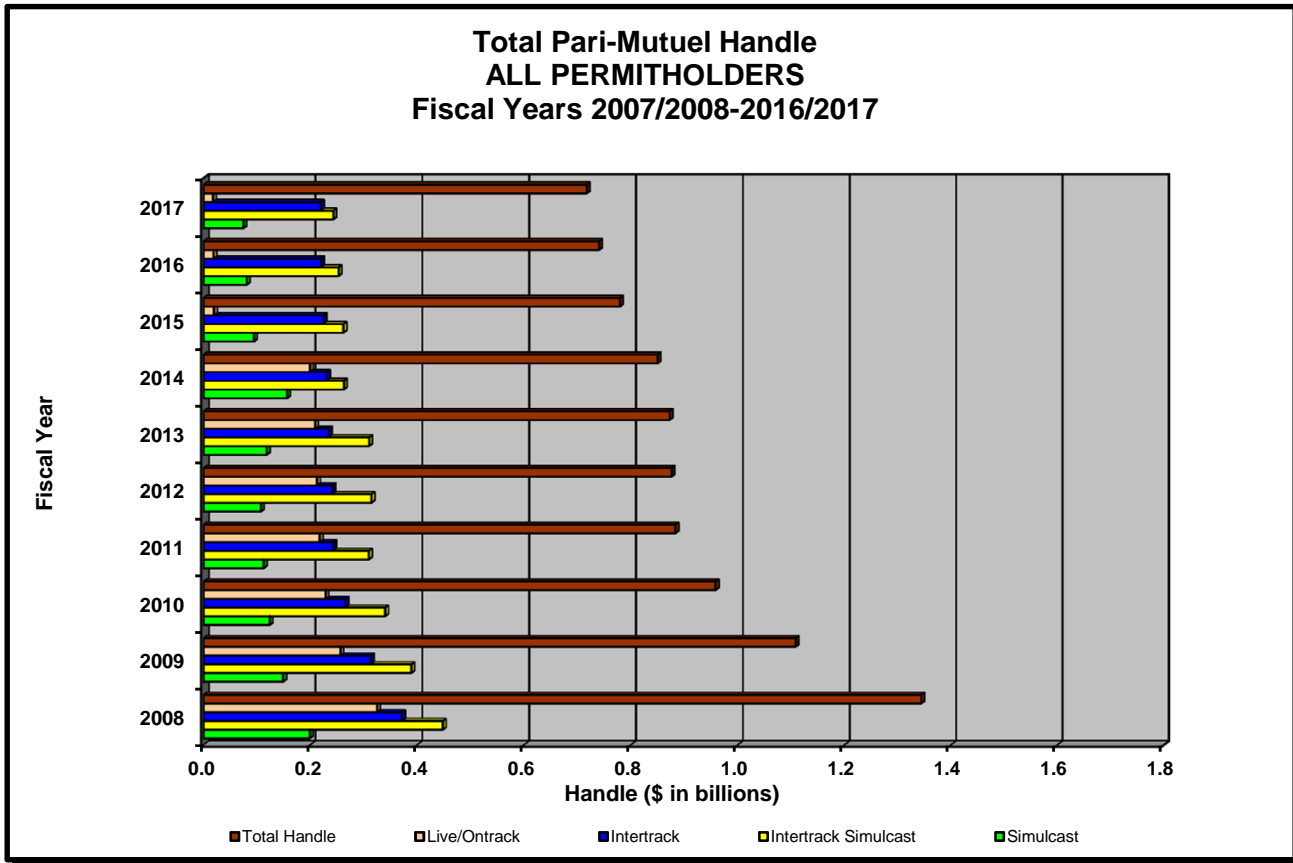
<i>Fiscal Year</i>	<i>Number of Racing Days</i>	<i>Total Paid Attendance</i>	<i>Total Pari-Mutuel Handle</i>	<i>Total State Revenue ⁽¹⁾</i>	<i>State Revenue as a Percent of Handle</i>
2007/2008	4,857	1,419,748	\$1,343,912,504	\$25,657,727	1.91%
2008/2009	4,364	722,699	\$1,108,401,006	\$19,814,027	1.79%
2009/2010	4,167	614,889	\$ 958,537,395	\$16,706,611	1.74%
2010/2011	3,633	507,804	\$ 883,381,429	\$13,640,020	1.54%
2011/2012	3,602	469,497	\$ 876,146,485	\$13,802,723	1.58%
2012/2013	3,628	430,707	\$ 872,272,660	\$13,200,709	1.51%
2013/2014	3,582	383,864	\$ 850,136,735	\$13,785,681	1.62%
2014/2015	3,441	377,660	\$ 779,336,136	\$12,589,460	1.62%
2015/2016	3,416	348,081	\$ 740,622,948	\$11,832,484	1.60%
2016/2017	3,415	333,620	\$ 717,555,785	\$10,926,309	1.52%

(1) Beginning 2006/2007, this figure includes state revenue from pari-mutuel performances and other state revenue, and does not include state revenue from cardroom and slot operations.

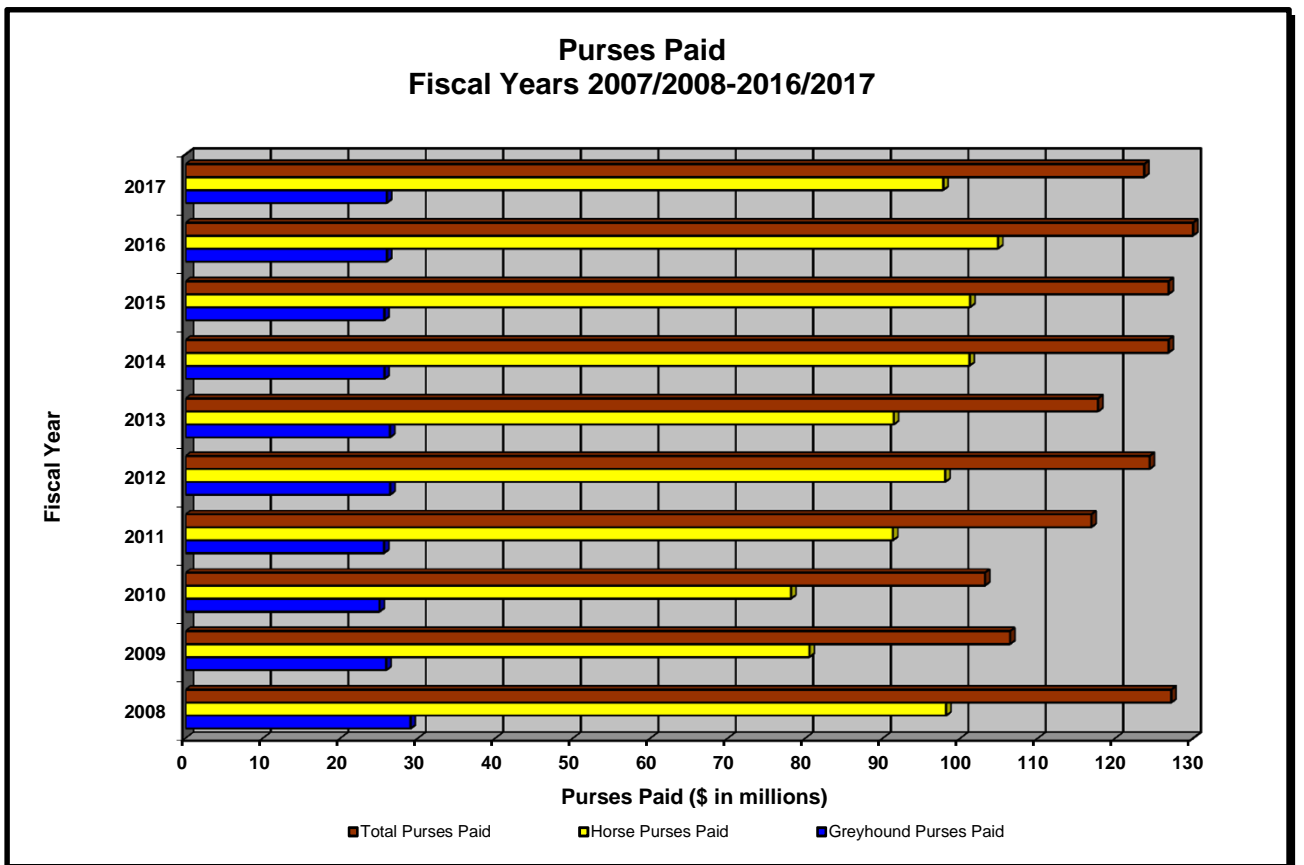
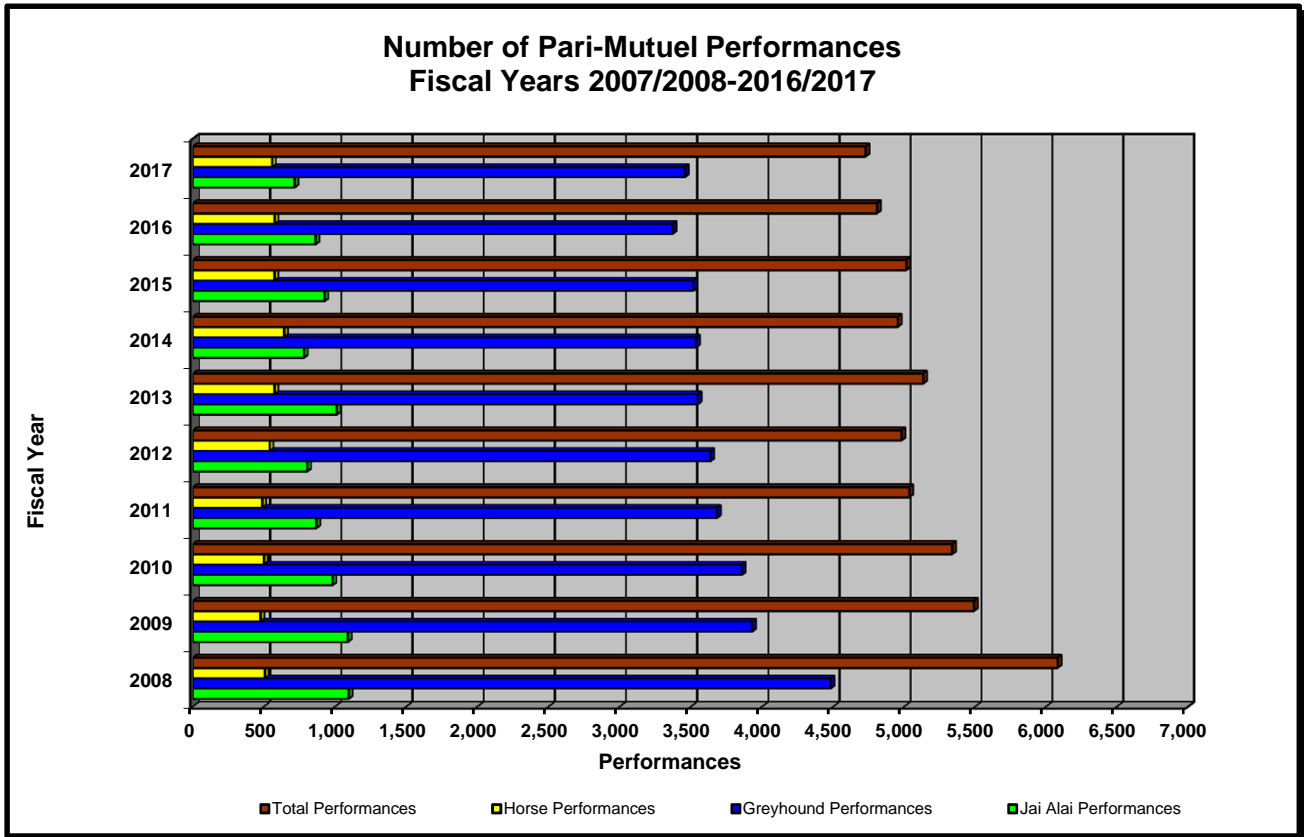
HISTORICAL PARI-MUTUEL WAGERING ACTIVITY



HISTORICAL PARI-MUTUEL WAGERING ACTIVITY



HISTORICAL PARI-MUTUEL WAGERING ACTIVITY



COMPONENTS OF PARI-MUTUEL HANDLE FROM PERFORMANCES

	Fiscal Year 2016/2017		Total Paid To		Permittholder Revenues From		Public Pool	Total Handle
	Daily License Fee	Tax on Handle	Charities	Parl-Mutuel Handle	Parl-Mutuel Handle	Public Pool		
Greyhound Racing Permittholders								
Daytona Beach Kennel Club, Inc.	\$28,040	\$12,604	\$30,821	\$2,130,377	\$5,619,050	\$7,820,892		
Derby Lane (St. Petersburg Kennel Club, Inc.)	72,000	225,658	115,808	4,513,869	15,805,440	20,732,775		
Ebro Greyhound Park	3,200	63	3,074	433,366	938,630	1,378,333		
Flagler Dog Track	59,660	181,380	62,414	3,401,765	13,191,696	16,896,915		
H&T Gaming, Inc., db/a Mardi Gras Racetrack	23,700	87,712	43,581	1,910,869	7,353,467	9,419,329		
Jacksonville Kennel Club, Inc.	22,800	30,313	74,863	2,358,867	7,979,228	10,466,071		
License Acquisitions, LLC, db/a Palm Beach Greyhound Racing	18,000	11,163	65,545	2,829,187	9,399,573	12,323,468		
Mardi Gras Racetrack and Gaming Center	21,595	42,328	47,849	1,761,174	6,591,353	8,464,299		
Melbourne Greyhound Park, LLC	8,091	936	0	43,444	118,413	170,884		
Naples-Ft. Myers Greyhound Track	89,484	168,301	42,737	3,270,011	11,985,928	15,556,461		
Orange Park Kennel Club, Inc.	19,200	15,302	77,188	2,806,501	9,345,112	12,263,303		
Palm Beach Kennel Club	104,240	332,186	88,116	8,395,763	28,732,968	37,653,273		
Penn Sanford, LLC, db/a Sanford-Orlando Kennel Club	30,720	52,083	19,692	2,179,308	8,072,094	10,353,897		
Pensacola Greyhound Racing, LLP	8,196	2,425	0	192,302	608,461	811,384		
SOKC, LLC, db/a Sanford-Orlando Kennel Club	43,760	95,356	21,006	2,439,544	9,207,147	11,806,813		
Sarasota Kennel Club, Inc.	19,042	18,860	33,589	1,672,945	5,377,751	7,122,187		
St. Johns Greyhound Park	34,800	71,796	83,791	3,882,289	13,027,524	17,100,200		
Tampa Greyhound Track	66,000	182,369	81,974	4,004,144	13,851,881	18,186,368		
West Volusia Racing, Inc.	22,740	7,141	25,931	2,120,443	5,780,408	7,956,663		
Total Greyhound Permittholders	\$695,268	\$1,537,976	\$917,979	\$50,346,168	\$172,986,124	\$226,483,515		
Jai Alai Permittholders								
Dania Jai Alai	\$68,720	\$0	\$431	\$956,713	\$3,106,470	\$4,132,334		
Dania Summer Jai Alai	45,520	0	296	513,568	1,691,402	2,250,786		
Ft. Pierce Jai Alai	12,800	0	0	(9,693)	8,781	11,888		
Kings Court Key	640	4	0	(618)	167	193		
Miami Jai Alai	73,440	0	6,972	972,231	3,003,403	4,056,046		
Ocala Gainesville Poker and Jai Alai	13,040	0	0	(13,038)	8	10		
Orlando Jai Alai	12,800	0	0	(12,800)	0	0		
Summer Jai Alai	73,920	0	7,378	1,031,084	3,174,222	4,286,604		
Total Jai Alai Permittholders	\$300,880	\$4	\$15,077	\$3,437,447	\$10,984,453	\$14,737,861		
Thoroughbred Racing Permittholders								
Caldor Race Course, Inc.	\$37,100	\$98,164	\$187,678	\$3,886,984	\$16,040,121	\$20,250,047		
Gulfstream Park Thoroughbred After Racing Program, Inc.	46,600	153,058	158,623	4,756,030	19,616,803	24,731,114		
Gulfstream Park Racing Association, Inc.	301,000	3,600,724	368,763	53,655,826	222,384,330	280,310,643		
Tampa Bay Downs, Inc.	254,300	978,974	66,282	15,813,329	65,095,323	82,208,208		
Tropical Park, LLC	45,200	156,944	261,639	5,829,806	23,846,438	30,140,027		
Total Thoroughbred Permittholders	\$684,200	\$4,987,864	\$1,042,985	\$83,941,975	\$346,983,015	\$437,640,039		
Harness Racing Permittholders								
Isle Casino and Racing at Pompano Park	\$304,200	\$452,997	\$8,354	\$7,703,318	\$30,132,251	\$38,601,120		
Quarter Horse Racing Permittholders								
Gretna Racing, LLC	\$25,600	\$241	\$0	(\$21,951)	\$20,224	\$24,114		
Hamilton Downs Horsetrack, LLC	6,400	147	0	(\$5,037)	13,211	14,721		
Ocala Breeders' Sales Company, Inc.	800	381	0	\$8,050	34,030	43,261		
South Florida Racing Association, LLC (Hialeah Park)	32,000	41	0	(\$31,220)	3,295	4,116		
South Marion Real Estate Holdings, LLC (Oxford Downs)	15,200	70	0	(\$14,089)	5,857	7,038		
Total Quarter Horse Permittholders	\$80,000	\$980	\$0	(\$64,247)	\$76,617	\$93,250		
TOTAL FOR ALL PERMITTHOLDERS	\$2,064,548	\$6,973,721	\$1,984,395	\$145,364,661	\$561,162,460	\$717,555,785		

TOTAL STATE REVENUE FROM PERFORMANCES

	LIVE			SIMULCAST			ITW		ITW SIM		CHARITY PERFORMANCES		TOTAL TAXES AND FEES DUE ^(A)
	Tax on Handle	Daily License Fee	Total Live Taxes and Fees Collected	Tax on Handle	Daily License Fee	Total Simulcast Taxes and Fees Collected	Tax on Handle	Tax on Handle	Tax on Handle	Tax on Handle	Daily License Fee		
Greyhound Racing Permitholders													
Dayona Beach Kennel Club, Inc.	\$4,462	\$8,480	\$12,942	\$1,374	\$3,000	\$4,374	\$6,768	\$0	\$16,560			\$40,644	
Derby Lane (St. Petersburg Kennel Club, Inc.)	102,639	57,600	160,239	0	0	0	123,019	0	14,400			297,658	
Ebro Greyhound Park	63	640	703	0	0	0	0	0	2,560			3,263	
Flagler Dog Track	15,136	26,560	41,696	13,419	20,500	33,919	38,940	113,885	12,600			241,040	
H&T Gaming, Inc. d/b/a Mardi Gras Race-track	0	0	0	28,657	14,000	42,657	0	59,055	9,700			111,412	
Jacksonville Kennel Club, Inc.	13,052	8,400	21,452	0	0	0	17,281	0	14,400			53,113	
License Acquisitions, LLC d/b/a Palm Beach Greyhound Racing	2,994	3,600	6,594	8,356	4,000	12,356	8,169	0	14,400			29,163	
Mardi Gras Race-track and Gaming Center	6,190	7,895	14,085	0	0	0	8,428	19,354	9,700			63,923	
Melbourne Greyhound Park, LLC	936	8,091	9,027	0	0	0	0	0	0			9,027	
Myers Greyhound Track	111,438	79,564	191,002	0	0	0	56,863	0	9,920			257,785	
Orange Park Kennel Club, Inc.	6,219	4,800	11,019	0	0	0	9,083	0	14,400			34,502	
Palm Beach Kennel Club	138,781	89,840	228,621	0	0	0	193,405	0	14,400			436,426	
Penn Sanford, LLC, d/b/a Sanford-Orlando Kennel Club	27,716	23,600	51,316	0	0	0	24,367	0	7,120			82,803	
Pensacola Greyhound Racing, LLP	2,425	8,196	10,621	0	0	0	0	0	0			10,621	
SOKC, LLC, d/b/a Sanford-Orlando Kennel Club	48,275	36,560	84,835	0	0	0	47,081	0	7,200			139,116	
Sarasota Kennel Club, Inc.	14,455	10,722	25,177	0	0	0	4,405	0	8,320			37,902	
St. Johns Greyhound Park	30,267	20,400	50,667	0	0	0	41,529	0	14,400			106,586	
Tampa Greyhound Track	83,084	51,600	134,684	0	0	0	99,285	0	14,400			248,369	
West Volusia Racing, Inc.	3,637	5,920	9,557	0	0	0	3,504	0	16,820			29,881	
Total Greyhound Permitholders	\$611,769	\$452,468	\$1,064,237	\$51,806	\$41,500	\$93,306	\$682,107	\$192,294	\$201,300			\$2,233,244	
Jai Alai Permitholders													
Dania Jai Alai	\$0	\$68,320	\$68,320	\$0	\$0	\$0	\$0	\$0	\$400			\$68,720	
Dania Summer Jai Alai	0	45,120	45,120	0	0	0	0	0	400			45,520	
Ft. Pierce Jai Alai	0	12,480	12,480	0	0	0	0	0	320			12,800	
Kings Court Key	4	640	644	0	0	0	0	0	0			644	
Miami Jai Alai	0	70,560	70,560	0	0	0	0	0	2,880			73,440	
Ocala Gainesville Poker and Jai Alai	0	13,040	13,040	0	0	0	0	0	0			13,040	
Orlando Jai Alai	0	11,200	11,200	0	0	0	0	0	1,600			12,800	
Summer Jai Alai	0	71,040	71,040	0	0	0	0	0	2,880			73,920	
Total Jai Alai Permitholders	\$4	\$292,400	\$292,404	\$0	\$0	\$0	\$0	\$0	\$8,480			\$300,884	
Thoroughbred Racing Permitholders													
Calder Race Course, Inc.	\$7,191	\$29,400	\$36,591	\$0	\$0	\$0	\$90,973	\$0	\$7,700			\$135,264	
Gulfstream Park Thoroughbred After Racing Program, Inc.	33,952	37,900	71,852	0	0	0	119,106	0	8,700			199,658	
Gulfstream Park Racing Association, Inc.	208,050	120,300	328,350	243,111	172,000	415,111	625,728	2,523,835	8,700			3,901,724	
Tampa Bay Downs, Inc.	73,679	81,000	154,679	16,063	165,500	181,563	281,346	607,886	7,800			1,233,274	
Tropical Park, LLC.	31,671	36,900	68,571	0	0	0	125,273	0	8,300			202,144	
Total Thoroughbred Permitholders	\$354,543	\$305,500	\$660,043	\$259,174	\$337,500	\$596,674	\$1,242,426	\$3,131,721	\$41,200			\$5,672,064	
Harness Racing Permitholders													
Isle Casino and Racing at Pompano Park	\$12,572	\$119,300	\$131,872	\$43,307	\$178,000	\$221,307	\$45,350	\$351,766	\$6,900			\$757,197	
Quarter Horse Racing Permitholders													
Gretna Racing, LLC	\$241	\$25,600	\$25,841	\$0	\$0	\$0	\$0	\$0	\$0			\$25,841	
Hamilton Downs Horse-track, LLC	147	6,400	6,547	0	0	0	0	0	0			6,547	
Ocala Breeders' Sales Company, Inc.	381	800	1,181	0	0	0	0	0	0			1,181	
South Florida Racing Association, LLC (Hialeah Park)	41	32,000	32,041	0	0	0	0	0	0			32,041	
South Marion Real Estate Holdings, LLC (Oxford Downs)	70	15,200	15,270	0	0	0	0	0	0			15,270	
Total Quarter Horse Permitholders	\$880	\$80,000	\$80,880	\$0	\$0	\$0	\$0	\$0	\$0			\$80,880	
TOTAL FOR ALL PERMITHOLDERS	\$975,768	\$1,249,668	\$2,229,436	\$354,287	\$557,000	\$911,287	\$1,969,883	\$3,675,783	\$257,880			\$9,044,269	

(A) The amounts shown are taxes and fees due after the application of any applicable tax credits, and do not include admissions tax.

TOTAL REGULAR AND CHARITY/SCHOLARSHIP HANDLE

	ON-TRACK		INTERTRACK		TOTAL REGULAR HANDLE		ON-TRACK		INTERTRACK		TOTAL CHARITY SCHOLARSHIP HANDLE		TOTAL HANDLE
	Live	Simulcast	ITW	ITWS	Live	Simulcast	ITW	ITWS	Live	Simulcast	ITW	ITWS	
Greyhound Racing Permitholders													
Daytona Beach Kennel Club, Inc.	\$2,880,247	\$440,947	\$3,978,847	\$0	\$7,310,041			\$263,299	\$34,124	\$213,428	\$0	\$510,851	\$7,820,892
Derby Lane (St. Petersburg Kennel Club, Inc.)	8,490,390	0	10,472,735	0	18,963,125			945,361	0	824,289	0	1,769,650	20,732,775
Ebro Greyhound Park	1,337,890	0	0	0	1,337,890			40,443	0	0	0	40,443	1,378,333
Flagler Dog Track	1,287,333	954,222	3,756,734	9,732,804	15,731,093			115,601	48,270	358,552	643,399	1,165,822	16,896,915
H&T Gaming, Inc., d/b/a Mardi Gras Racetrack	871,035	1,668,106	1,896,264	4,170,032	8,605,437			123,279	138,705	210,581	341,327	813,892	9,419,329
Jacksonville Kennel Club, Inc.	3,150,514	0	5,943,664	0	9,094,178			541,612	0	830,281	0	1,371,893	10,466,071
License Acquisitions, LLC, d/b/a Palm Beach Greyhound Racing	3,254,834	0	7,734,945	0	10,989,779			403,760	0	929,929	0	1,333,689	12,323,468
Mardi Gras Racetrack and Gaming Center	1,075,475	1,270,017	2,024,214	3,204,587	7,574,293			113,761	162,277	222,755	391,213	890,006	8,464,299
Melbourne Greyhound Park, LLC	170,884	0	0	0	170,884			0	0	0	0	0	170,884
Naples-Ft. Myers Greyhound Track	8,756,124	0	6,096,113	0	14,852,237			445,488	0	258,736	0	704,224	15,556,461
Orange Park Kennel Club, Inc.	3,842,407	0	7,051,304	0	10,893,711			591,938	0	777,654	0	1,369,592	12,263,303
Palm Beach Kennel Club	12,285,325	0	23,790,555	0	36,075,880			703,326	0	934,067	0	1,637,393	37,653,273
Penn Sanford, LLC, d/b/a Sanford-Orlando Kennel Club	4,283,390	0	5,693,640	0	9,977,030			139,115	0	237,752	0	376,867	10,353,897
Pensacola Greyhound Racing, LLP	811,384	0	0	0	811,384			0	0	0	0	0	811,384
SOKC, LLC, d/b/a Sanford-Orlando Kennel Club	5,236,801	0	6,174,919	0	11,411,720			151,370	0	243,723	0	395,093	11,806,813
Sarasota Kennel Club, Inc.	4,491,774	0	2,141,977	0	6,633,751			391,605	0	96,831	0	488,436	7,122,187
St. Johns Greyhound Park	5,412,467	0	10,176,976	0	15,589,443			604,791	0	905,966	0	1,510,757	17,100,200
Tampa Greyhound Track	6,870,955	0	10,015,843	0	16,886,798			585,641	0	713,929	0	1,299,570	18,186,368
West Volusia Racing, Inc.	2,596,414	800,010	4,108,863	0	7,505,287			192,792	49,545	208,039	0	451,376	7,956,663
Total Greyhound Permitholders	\$77,115,643	\$5,133,302	\$110,987,593	\$17,107,423	\$210,353,961			\$6,353,182	\$432,921	\$7,967,512	\$1,375,339	\$16,129,554	\$226,483,515
Jai Alai Permitholders													
Dania Jai Alai	\$1,355,994	\$0	\$2,752,067	\$0	\$4,108,061			\$10,080	\$0	\$14,193	\$0	\$24,273	\$4,132,334
Dania Summer Jai Alai	695,600	0	1,538,833	0	2,234,433			6,101	0	10,252	0	16,353	2,250,786
Ft. Pierce Jai Alai	11,678	0	0	0	11,678			210	0	0	0	210	11,888
Kings Court Key	193	0	0	0	193			0	0	0	0	0	193
Miami Jai Alai	1,361,961	0	2,498,319	0	3,860,280			77,784	0	117,982	0	195,766	4,056,046
Ocala Gainesville Poker and Jai Alai	10	0	0	0	10			0	0	0	0	0	10
Orlando Jai Alai	0	0	0	0	0			0	0	0	0	0	0
Summer Jai Alai	1,503,127	0	2,574,762	0	4,077,889			82,958	0	125,757	0	208,715	4,286,604
Total Jai Alai Permitholders	\$4,928,563	\$0	\$9,363,981	\$0	\$14,292,544			\$177,133	\$0	\$268,184	\$0	\$445,317	\$14,737,861
Thoroughbred Racing Permitholders													
Caldor Race Course, Inc.	\$1,438,180	\$0	\$6,643,646	\$0	\$8,081,826			\$265,204	\$0	\$1,952,179	\$9,950,838	\$12,168,221	\$20,250,047
Gulfstream Park Thoroughbred After Racing Program, Inc.	6,790,439	0	6,766,770	0	13,557,209			1,840,326	2,271,775	1,692,332	5,369,472	11,173,905	24,731,114
Gulfstream Park Racing Association, Inc.	41,610,083	48,622,116	36,631,898	124,723,649	251,587,746			9,363,768	3,484,578	5,156,210	10,718,341	28,722,897	280,310,643
Tampa Bay Downs, Inc.	16,845,916	3,212,656	19,765,104	36,371,014	76,194,690			1,989,507	173,993	2,167,307	1,682,711	6,013,518	82,208,208
Tropical Park, LLC.	6,334,251	0	7,074,852	0	13,409,103			1,819,899	3,051,520	1,666,830	10,192,675	16,730,924	30,140,027
Total Thoroughbred Permitholders	\$73,018,869	\$51,834,772	\$76,882,270	\$161,094,663	\$362,830,574			\$15,276,704	\$8,981,866	\$12,634,858	\$37,914,037	\$74,809,465	\$437,640,039
Harness Racing Permitholders													
Isle Casino and Racing at Pompano Park	\$2,514,467	\$8,661,423	\$1,500,596	\$25,256,232	\$37,932,718			\$82,541	\$126,047	\$60,040	\$399,774	\$668,402	\$38,601,120
Quarter Horse Racing Permitholders													
Gretta Racing, LLC	\$24,114	\$0	\$0	\$0	\$24,114			\$0	\$0	\$0	\$0	\$0	\$24,114
Hamilton Downs Horsetrack, LLC	14,721	0	0	0	14,721			0	0	0	0	0	14,721
Ocala Breeders' Sales Company, Inc.	43,261	0	0	0	43,261			0	0	0	0	0	43,261
South Florida Racing Association, LLC (Hialeah Park)	4,116	0	0	0	4,116			0	0	0	0	0	4,116
South Marion Real Estate Holdings, LLC (Oxford Downs)	7,038	0	0	0	7,038			0	0	0	0	0	7,038
Total Quarter Horse Permitholders	\$93,250	\$0	\$0	\$0	\$93,250			\$0	\$0	\$0	\$0	\$0	\$93,250
TOTAL FOR ALL PERMITHOLDERS	\$157,670,792	\$65,629,497	\$198,744,440	\$203,458,318	\$625,503,047			\$21,891,560	\$9,540,834	\$20,930,594	\$39,689,750	\$92,052,738	\$717,555,795

TOTAL INTERTRACK WAGERING HANDLE BY GUEST

Fiscal Year 2016/2017

HOST PERMITHOLDER

	DAYTONA	DERBY LANE	FLAGLER	H&T GAMING	JACKSONVILLE	LICENSE ACQUISITIONS	MARDI GRAS	NAPLES-FT. MYERS	ORANGE PARK	PALM BEACH
Greyhound Permitholders										
Daytona Beach Kennel Club, Inc.	\$0	\$461,885	\$22,262	\$336,649	\$0	\$0	\$309,995	\$177,209	\$212,410	\$808,340
Derby Lane (St. Petersburg Kennel Club, Inc.)	324,201	0	1,133,554	651,435	512,462	779,731	473,507	445,446	627,327	2,206,434
Ebro Greyhound Park	0	508,371	0	0	133,871	185,143	0	0	171,751	641,723
Flagler Dog Track	118,984	461,797	0	728,069	322,854	650,659	603,361	925,657	377,990	1,793,548
H&T Gaming, Inc., db/a Mardi Gras Racetrack	340,907	480,993	4,141,730	0	530,892	563,132	0	368,219	550,939	1,110,206
Jacksonville Kennel Club, Inc.	313,193	597,800	1,369,590	768,501	772,912	445,654	617,386	382,900	940,253	1,194,132
License Acquisitions, LLC, db/a Palm Beach Greyhound Racing	0	0	168,422	0	524,762	0	0	0	0	0
Mardi Gras Racetrack and Gaming Center	127,802	206,720	0	0	0	0	0	242,469	0	484,437
Melbourne Greyhound Park, LLC	109,795	245,365	422,451	240,277	162,820	287,962	217,422	154,730	166,374	878,537
Naples-Ft. Myers Greyhound Track	144,669	467,450	828,305	238,962	177,948	391,127	197,489	0	233,250	1,213,091
Orange Park Kennel Club, Inc.	536,167	1,177,730	2,245,575	1,312,067	0	1,032,857	1,010,617	644,511	0	2,692,739
Palm Beach Kennel Club	336,188	893,552	93,393	194,904	21,850	0	189,971	613,628	699,032	0
Penn Sanford, LLC, db/a Sanford-Orlando Kennel Club	0	0	1,549,477	0	539,158	744,211	331,538	122,316	291,700	700,881
Pensacola Greyhound Racing, LLP	249,857	0	308,917	171,825	753,791	324,156	155,408	122,683	841,787	934,686
SOKC, LLC, db/a Sanford-Orlando Kennel Club	342,226	994,842	326,125	1,037,314	0	0	536,416	470,371	342,521	1,524,795
Sarasota Kennel Club, Inc.	151,178	877,763	769,329	395,722	214,233	482,256	359,576	300,996	263,472	1,407,139
Tampa Greyhound Track	356,320	1,999,529	346,860	204,948	572,905	660,242	252,626	497,234	661,925	1,904,785
West Volusia Racing, Inc.	151,454	0	111,763	0	348,856	461,166	195,703	48,734	153,529	379,073
Total Greyhound Permitholders	\$3,602,941	\$9,373,797	\$13,837,753	\$6,280,673	\$5,589,314	\$7,008,286	\$5,451,025	\$5,527,103	\$6,534,260	\$19,874,546
Jai Alai Permitholders										
Dania Jai Alai	\$35,582	\$46,462	\$0	\$38,989	\$0	\$0	\$46,907	\$76,091	\$0	\$99,560
Dania Summer Jai Alai	28,327	33,481	64,918	0	0	62,599	0	9,187	0	55,725
Ft. Pierce Jai Alai	113,090	175,062	108,072	53,196	136,222	305,552	61,764	171,898	158,893	815,803
Miami Jai Alai	0	0	0	0	0	0	0	0	0	0
Ocala Gainesville Poker and Jai Alai	61,187	224,828	68,273	28,153	160,519	136,383	37,931	138,314	110,962	354,817
Orlando Jai Alai	0	0	0	0	0	0	0	0	0	0
Summer Jai Alai	0	0	0	0	0	0	0	0	0	0
Total Jai Alai Permitholders	\$238,186	\$479,833	\$241,263	\$120,338	\$296,741	\$504,534	\$146,602	\$395,490	\$269,855	\$1,325,905
Thoroughbred Permitholders										
Calder Race Course, Inc.	\$0	\$0	\$0	\$0	\$0	\$0	\$0	\$0	\$0	\$0
Gulfstream Park Racing Association, Inc.	0	0	0	0	0	0	0	0	0	0
Tampa Bay Downs, Inc.	0	965,000	0	0	184,294	251,248	0	0	208,537	874,689
Total Thoroughbred Permitholders	\$0	\$965,000	\$0	\$0	\$184,294	\$251,248	\$0	\$0	\$208,537	\$874,689
Harness Permitholders										
Isle Casino and Racing at Pompano Park	\$0	\$0	\$182,278	\$112,390	\$261,699	\$463,902	\$150,566	\$229,725	\$300,897	\$1,310,918
Quarter Horse Permitholders										
Gretina Racing, LLC	\$178,459	\$292,023	\$230,195	\$104,803	\$395,420	\$218,078	\$94,576	\$202,531	\$419,342	\$563,233
Ocala Breeders' Sales Company Inc.	82,005	186,371	0	0	0	149,497	0	0	21,322	359,286
South Florida Racing Association, LLC (Hialeah Park)	0	0	0	0	0	0	0	0	0	0
South Marion Real Estate Holdings, LLC (Oxford Downs)	90,684	0	0	0	46,477	69,329	0	0	74,745	356,045
Total Quarter Horse Permitholders	\$351,148	\$478,394	\$230,195	\$104,803	\$441,897	\$436,904	\$94,576	\$202,531	\$515,409	\$1,276,564
TOTAL FOR ALL PERMITHOLDERS	\$4,192,275	\$11,297,024	\$14,491,489	\$6,618,204	\$6,773,945	\$8,664,874	\$5,842,769	\$6,354,849	\$7,828,958	\$24,664,622

Note: Figures above include handle from charity/scholarship performances.

TOTAL INTERTRACK WAGERING HANDLE BY GUEST

Fiscal Year 2016/2017

HOST PERMITHOLDER

GUEST PERMITHOLDER	Penn Sanford	SOKC, LLC	SARASOTA	ST. JOHNS	TAMPA GREYHOUND	WEST VOLUSIA RACING	DANIA	DANIA SUMMER	MIAMI
Greyhound Permitholders									
Daytona Beach Kennel Club, Inc.	\$0	\$430,776	\$94,741	\$482,387	\$0	\$0	\$107,699	\$41,586	\$85,316
Derby Lane (St. Petersburg Kennel Club, Inc.)	460,532	491,332	198,202	811,596	0	365,416	165,692	105,474	247,960
Ebro Greyhound Park	0	0	135,616	363,582	441,618	0	34,779	18,605	0
Flagler Dog Track	304,596	288,660	102,713	476,047	497,003	173,035	184,670	121,185	0
H&T Gaming, Inc., d/b/a Mardi Gras Racetrack	553,665	485,041	182,918	392,642	632,732	450,746	104,692	90,622	0
Jacksonville Kennel Club, Inc.	441,311	452,638	192,698	1,338,510	587,885	353,720	0	0	162,550
License Acquisitions, LLC, d/b/a Palm Beach Greyhound Racing	344,049	0	0	0	350,377	177,838	0	2,212	0
Mardi Gras Racetrack and Gaming Center	97,726	175,043	155,788	424,080	122,108	73,843	70,729	0	0
Meibourne Greyhound Park, LLC	181,425	223,943	64,867	261,760	232,615	128,519	284,196	159,510	347,103
Naples-Ft. Myers Greyhound Track	252,631	297,281	104,379	290,657	457,420	129,001	94,035	38,364	0
Orange Park Kennel Club, Inc.	792,392	801,561	260,587	0	1,184,511	553,313	0	0	136,466
Palm Beach Kennel Club	252,592	692,469	148,668	995,966	360,401	144,844	109,941	48,799	229,341
Penn Sanford, LLC, d/b/a Sanford-Orlando Kennel Club	0	0	75,682	175,580	873,811	384,814	0	0	0
Pensacola Greyhound Racing, LLP	467,554	512,286	114,088	1,150,179	0	286,835	41,948	18,313	35,957
SOKC, LLC, d/b/a Sanford-Orlando Kennel Club	0	0	161,133	690,787	0	0	0	0	0
Sarasota Kennel Club, Inc.	245,379	251,064	0	383,245	842,731	171,716	0	0	0
Tampa Greyhound Track	649,101	635,304	210,565	924,771	1,926,808	326,714	166,452	96,017	244,495
West Volusia Racing, Inc.	310,121	84,995	36,163	114,635	421,595	0	29,901	26,452	48,760
Total Greyhound Permitholders	\$5,353,074	\$5,822,393	\$2,238,808	\$9,276,424	\$8,931,615	\$3,720,354	\$1,394,734	\$767,139	\$1,537,948
Jai Alai Permitholders									
Dania Jai Alai	\$0	\$0	\$0	\$131	\$29,162	\$0	\$0	\$0	\$142,524
Dania Summer Jai Alai	0	0	0	0	57,628	0	0	0	0
Ft. Pierce Jai Alai	0	0	0	204,302	171,005	126,707	179,203	97,373	141,126
Miami Jai Alai	0	0	0	0	0	0	268	0	0
Ocala Gainesville Poker and Jai Alai	140,390	136,897	0	179,924	258,371	120,792	156,485	86,710	95,818
Orlando Jai Alai	0	0	0	0	0	0	526,320	301,087	411,446
Summer Jai Alai	0	0	0	0	0	0	0	1,429	0
Total Jai Alai Permitholders	\$140,390	\$136,897	\$0	\$384,357	\$516,166	\$247,499	\$862,276	\$486,599	\$790,914
Thoroughbred Permitholders									
Calder Race Course, Inc.	\$0	\$0	\$0	\$0	\$0	\$0	\$0	\$0	\$0
Gulfstream Park Racing Association, Inc.	0	0	0	0	0	0	0	0	0
Tampa Bay Downs, Inc.	222,291	237,594	0	338,841	768,836	0	67,182	39,651	215,716
Total Thoroughbred Permitholders	\$222,291	\$237,594	\$0	\$338,841	\$768,836	\$0	\$67,182	\$39,651	\$215,716
Harness Permitholders									
Isle Casino and Racing at Pompano Park	\$0	\$0	\$0	\$388,099	\$0	\$0	\$326,091	\$170,461	\$0
Quarter Horse Permitholders									
Ocala Racetrack, LLC	\$215,637	\$221,758	\$0	\$522,501	\$342,773	\$200,189	\$61,335	\$44,915	\$0
Ocala Breeders' Sales Company Inc.	0	0	0	68,582	170,382	97,158	54,642	40,320	71,723
South Florida Racing Association, LLC (Hialeah Park)	0	0	0	0	0	0	0	0	0
South Marion Real Estate Holdings, LLC (Oxford Downs)	0	0	0	104,138	0	52,702	0	0	0
Total Quarter Horse Permitholders	\$215,637	\$221,758	\$0	\$695,221	\$513,155	\$350,049	\$115,977	\$85,235	\$71,723
TOTAL FOR ALL PERMITHOLDERS	\$5,931,392	\$6,418,642	\$2,238,808	\$11,082,942	\$10,729,772	\$4,317,902	\$2,766,260	\$1,549,085	\$2,616,301

CONTINUED FROM PREVIOUS PAGE

Note: Figures above include handle from charity/scholarship performances.

TOTAL INTERTRACK WAGERING HANDLE BY GUEST

GUEST PERMITHOLDER	HOST PERMITHOLDER							TOTAL
	SUMMER	CALDER	GULFSTREAM PARK	GULFSTREAM PARK AFTER RACING PROGRAM	TAMPA BAY DOWNS	TROPICAL PARK	POMPANO PARK	
Greyhound Permitholders								
Daytona Beach Kennel Club, Inc.	\$29,499	\$0	\$3,563,673	\$0	\$1,019,371	\$559,217	\$899,606	\$9,642,621
Derby Lane (St. Petersburg Kennel Club, Inc.)	248,536	539,897	8,010,992	648,903	2,801,097	1,024,968	1,414,133	24,688,827
Ebro Greyhound Park	382	114,678	1,361,203	181,051	207,490	269,294	0	4,769,157
Fiegler Dog Track	0	331,144	3,606,265	476,333	522,213	484,027	773,627	14,324,437
H&T Gaming, Inc., db/a Mardi Gras Racetrack	0	22,929	633,000	27,544	330,004	42,540	1,908,727	13,944,437
Jacksonville Kennel Club, Inc.	130,126	326,070	4,401,742	357,020	1,365,727	553,432	761,288	18,837,038
License Acquisitions, LLC, db/a Palm Beach Greyhound Racing	115,363	0	4,692,631	1,952,811	1,484,301	302,462	917,129	11,032,357
Mardi Gras Racetrack and Gaming Center	0	0	189,733	0	144,357	0	530,800	3,045,635
Melbourne Greyhound Park, LLC	370,744	502,916	7,130,889	604,884	1,973,610	756,829	951,541	17,061,074
Naples-Ft. Myers Greyhound Track	0	1,074,613	13,399,891	677,759	3,795,140	1,144,526	1,502,500	27,150,498
Orange Park Kennel Club, Inc.	129,147	370,972	4,956,437	462,145	1,741,522	644,197	127,748	22,813,261
Palm Beach Kennel Club	114,562	1,998,766	22,102,718	0	5,824,935	2,219,212	3,119,245	41,404,977
Penn Sanford, LLC, db/a Sanford-Orlando Kennel Club	0	729,701	4,345,488	714,865	1,370,387	204,006	896,493	14,050,108
Pensacola Greyhound Racing, LLP	52,829	160,099	774,419	203,750	279,229	328,833	0	8,289,429
SOKC, LLC, db/a Sanford-Orlando Kennel Club	0	0	5,830,663	0	1,814,569	895,193	955,825	15,922,780
Sarasota Kennel Club, Inc.	0	635,051	8,611,644	637,199	2,736,937	992,049	1,320,196	22,048,875
Tampa Greyhound Track	263,041	466,887	6,731,055	551,765	2,590,716	607,888	1,497,663	25,346,616
West Volusia Racing, Inc.	102,788	393,135	2,549,945	394,905	731,798	225,661	955,387	8,276,519
Total Greyhound Permitholders	\$1,557,017	\$7,666,858	\$102,892,388	\$7,890,934	\$30,733,403	\$11,254,334	\$18,531,908	\$302,649,029
Jai Alai Permitholders								
Dania Jai Alai	\$0	\$95,234	\$1,347,298	\$0	\$293,700	\$0	\$35,351	\$2,286,991
Dania Summer Jai Alai	123,471	40,131	786,553	121,926	60,543	293,608	6,332	1,744,429
Ft. Pierce Jai Alai	160,570	315,579	3,929,658	357,498	1,022,754	459,992	0	9,265,319
Miami Jai Alai	0	0	0	0	0	0	0	268
Ocala Gainesville Poker and Jai Alai	113,107	105,705	1,471,782	141,388	496,464	174,141	288,896	5,268,237
Orlando Jai Alai	441,531	475,589	7,073,203	577,582	2,239,262	744,141	1,885,355	14,675,516
Summer Jai Alai	0	0	0	0	0	0	0	1,429
Total Jai Alai Permitholders	\$838,679	\$1,032,238	\$14,608,494	\$1,198,394	\$4,112,723	\$1,671,882	\$2,195,934	\$33,242,189
Thoroughbred Permitholders								
Calder Race Course, Inc.	\$0	\$0	\$13	\$0	\$0	\$0	\$0	\$13
Gulfstream Park Racing Association, Inc.	0	5,512,770	0	0	14,843,817	0	3,695,447	24,052,034
Tampa Bay Downs, Inc.	207,498	1,277,163	20,225,601	1,237,476	0	1,645,469	1,954,757	30,921,843
Total Thoroughbred Permitholders	\$207,498	\$6,789,933	\$20,225,614	\$1,237,476	\$14,843,817	\$1,645,469	\$5,650,204	\$54,973,890
Harness Permitholders								
Isle Casino and Racing at Pompano Park	\$0	\$1,392,409	\$18,644,184	\$1,536,676	\$4,553,028	\$1,982,915	\$0	\$32,006,238
Quarter Horse Permitholders								
Greina Racing, LLC	\$0	\$90,869	\$1,457,054	\$156,727	\$305,551	\$135,129	\$318,976	\$6,772,074
Ocala Breeders' Sales Company Inc.	97,325	706,553	8,344,591	797,041	2,576,794	956,676	306,166	15,086,434
South Florida Racing Association, LLC (Hialeah Park)	0	786,316	9,707,221	937,332	2,476,968	1,074,189	114,195	15,096,221
South Marion Real Estate Holdings, LLC (Oxford Downs)	0	81,487	1,350,552	73,994	383,852	213,763	99,259	2,997,027
Total Quarter Horse Permitholders	\$97,325	\$1,665,225	\$20,859,418	\$1,965,094	\$5,743,165	\$2,379,757	\$838,596	\$39,951,756
TOTAL FOR ALL PERMITHOLDERS	\$2,700,519	\$18,546,663	\$177,230,098	\$13,828,574	\$59,986,136	\$18,934,357	\$27,216,642	\$462,823,102

CONTINUED FROM PREVIOUS PAGE

Note: Figures above include handle from charity/scholarship performances.

CHARITY AND SCHOLARSHIP PERFORMANCES

Each permitholder may operate up to five additional days designated as charity or scholarship days during their regular meet. Pursuant to section 550.0351, Florida Statutes, proceeds from these additional days are paid to approved charities, major state and private institutions of higher learning, community colleges, the Historical Resources Operating Trust Fund, and the Racing Scholarship Trust Fund (Board of Governors' Operations and Maintenance Trust Fund). A list of proposed recipients is submitted annually by the permitholder to the division. [Typically, the amount contributed to charitable organizations is determined by calculating the amount of taxes due to the state had it been a regular performance.] A minimum of \$2,019,184 was paid to charitable organizations during Fiscal Year 2016/2017, bringing the total proceeds disbursed since 1985 to \$82,094,071.

RACING SCHOLARSHIP TRUST FUND

The Board of Governors, within the Department of Education, oversees the Board of Governors' Operations and Maintenance Trust Fund and ensures that the referenced contributions are used to provide scholarships to deserving students attending Florida's colleges and universities. A total of \$16,887,623 has been paid to this fund since the program began in 1949.

Racing Scholarship Trust Fund	
Washington County Kennel Club, Inc.	\$1,288
Total For 2016/2017 Fiscal Year	\$1,288

ABANDONED WINNING TICKETS

Abandoned pari-mutuel tickets are winning tickets that remain uncashed for a period of one year. The value of greyhound and jai alai abandoned tickets for live on-track races or games escheat to the state. These funds are deposited into the Department of Education's State School Trust Fund for the support and maintenance of Florida's public schools. Since 1957, the total paid into this fund is \$97,184,710. The amount collected from abandoned winning tickets for the State School Trust Fund for this fiscal year is detailed below.

Abandoned Winning Tickets	
Greyhound Permitholders	\$767,723
Jai Alai Permitholders	28,129
Total For 2016/2017 Fiscal Year	\$795,852

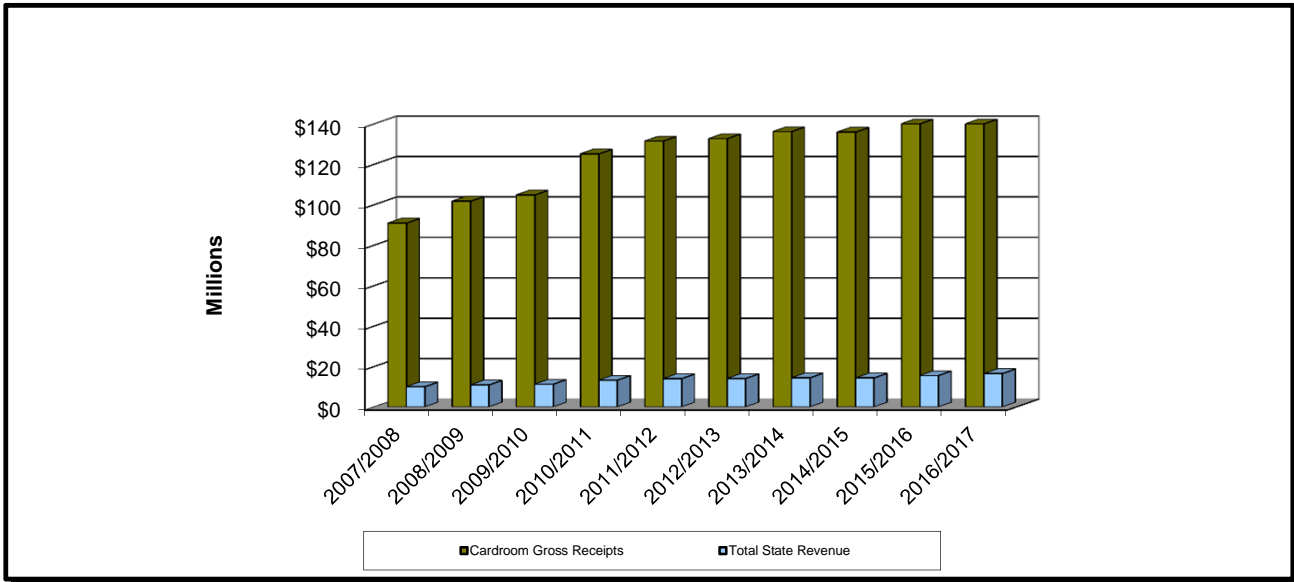
In harness and quarter horse racing, abandoned winning tickets are paid to the respective breeders' associations. Abandoned winning tickets from thoroughbred horse racing are retained by the permitholder.

CARDROOM COMPARATIVE DATA

During Fiscal Year 2016/2017, there were 26 permissors that obtained a cardroom license. Two did not operate, the other 24 operated at pari-mutuel facilities located throughout the state. The number of cardroom tables increased from 774 in Fiscal Year 2015/2016, to 805 in Fiscal Year 2016/2017. Cardroom gross receipts increased from \$147,298,438 to \$156,914,074 and the gross receipts tax increased from \$14,729,654 to \$15,692,825 this fiscal year. Table fees increased from \$774,000 to \$805,000 this fiscal year. The overall result was an increase in total state revenue from \$15,503,654 to \$16,497,825 this fiscal year.

Cardroom tax revenue is distributed 50 percent between the Pari-Mutuel Wagering Trust Fund and the General Revenue Fund. In accordance with section 849.086(13)(h), Florida Statutes, one quarter of the moneys deposited into the Pari-Mutuel Wagering Trust Fund must be distributed to counties and municipalities that approved the cardroom. In October 2017, the division distributed approximately \$1,961,603 to the counties/municipalities from cardroom gross receipts.

CARDROOM GROSS RECEIPTS AND TOTAL STATE REVENUE FISCAL YEARS 2007/2008 THROUGH 2016/2017



CARDROOM GROSS RECEIPTS AND STATE REVENUE SUMMARY

Fiscal Year	Total Cardroom Gross Receipts	Gross Receipts Tax	Table Fees Collected ^(A)	Total State Revenue (Gross Receipts Tax plus Table Fees)	Total State Revenue as a Percent of Gross Receipts
2007/2008	\$90,863,855	\$9,086,385	\$875,000	\$9,961,385	10.96%
2008/2009	\$101,700,243	\$10,170,024	\$698,000	\$10,868,024	10.69%
2009/2010	\$104,799,448	\$10,479,945	\$749,000	\$11,228,945	10.71%
2010/2011	\$125,141,080	\$12,514,108	\$718,000	\$13,232,108	10.57%
2011/2012	\$131,447,663	\$13,144,767	\$834,000	\$13,978,767	10.63%
2012/2013	\$132,690,415	\$13,269,045	\$810,000	\$14,079,045	10.61%
2013/2014	\$136,163,616	\$13,615,464	\$788,000	\$14,403,464	10.58%
2014/2015	\$135,888,902	\$13,589,789	\$755,000	\$14,344,789	10.56%
2015/2016	\$147,298,438	\$14,729,654	\$774,000	\$15,503,654	10.53%
2016/2017	\$156,914,074	\$15,692,825	\$805,000	\$16,497,825	10.51%

^(A) Amount agrees with the number of approved cardroom tables per annual cardroom licenses, and reflects the number of tables in operation each fiscal year.

COMPONENTS OF CARDROOM REVENUE BY ASSOCIATION

Fiscal Year 2016/2017		County / Municipality	Gross Receipts	Tournament Gross Receipts	Total Gross Receipts	Gross Receipts Tax (A)	Table Fees Collected (B)	Total Taxes and Fees
Greyhound Racing Permitholders								
	Daytona Beach Kennel Club, Inc.	Volusia	\$12,182,887	\$591,057	\$12,773,944	\$1,277,394	\$50,000	\$1,327,394
	Derby Lane (St. Petersburg Kennel Club, Inc.)	Pinellas	8,274,700	909,106	9,183,806	918,381	45,000	963,381
	Ebro Greyhound Park	Washington	3,220,327	378,901	3,599,228	359,923	21,000	380,923
	Flagler Dog Track	Dade	8,561,098	53,509	8,614,607	861,461	25,000	886,461
	Jacksonville Kennel Club, Inc.	Duval	20,597,107	1,012,900	21,610,007	2,161,001	89,000	2,250,001
	Mardi Gras Racetrack and Gaming Center/H&T Gaming, Inc.	City of Hallandale	6,386,139	230,949	6,617,088	661,709	30,000	691,709
	Melbourne Greyhound Park, LLC	Brevard	5,043,575	272,555	5,316,110	531,611	38,000	569,611
	Naples-Ft. Myers Greyhound Track	Lee	7,377,447	440,625	7,818,072	780,734	34,000	814,734
	Orange Park Kennel Club, Inc.	Town of Orange Park	11,076,755	81,990	11,158,745	1,115,874	37,000	1,152,874
	Palm Beach Kennel Club/License Acquisitions, LLC	Palm Beach	13,650,624	995,718	14,646,342	1,467,107	64,000	1,531,107
	Pensacola Greyhound Racing, LLP	Escambia	3,944,263	271,505	4,215,768	421,577	20,000	441,577
	Sarasota Kennel Club, Inc.	Sarasota	5,378,810	837,048	6,215,858	621,586	35,000	656,586
	St. Johns Greyhound Park (C)	St. Johns	0	0	0	0	1,000	1,000
	Tampa Greyhound Track	Hillsborough	2,019,585	82,964	2,102,549	210,255	14,000	224,255
	West Volusia Racing, Inc	City of Orange City	2,789,147	0	2,789,147	278,915	66,000	344,915
	Total Greyhound Permitholders		\$110,502,464	\$6,158,807	\$116,661,271	\$11,667,528	\$569,000	\$12,236,528
Jai Alai Permitholders								
	Dania Jai Alai/Dania Summer Jai Alai	Broward	\$999,497	\$246,166	\$1,245,663	\$124,566	\$22,000	\$146,566
	Ft. Pierce Jai Alai	St. Lucie	2,444,737	71,915	2,516,652	251,665	25,000	276,665
	Kings Court Key	City of Florida City	43,923	0	43,923	4,392	12,000	16,392
	Miami/Summer Jai Alai (C)	Dade	0	0	0	0	1,000	1,000
	Ocala Gainesville Poker and Jai Alai	Marion	1,821,745	57,110	1,878,855	187,885	18,000	205,885
	Total Jai Alai Permitholders		\$5,309,902	\$375,191	\$5,685,093	\$568,508	\$78,000	\$646,508
Thoroughbred Racing Permitholders								
	Gulfstream Park Racing Association, Inc.	City of Hallandale	4,387,293	111,308	4,498,601	449,860	20,000	469,860
	Tampa Bay Downs, Inc.	Hillsborough	4,042,423	623,895	\$4,666,318	466,632	23,000	489,632
	Total Thoroughbred Permitholders		\$8,429,716	\$735,203	\$9,164,919	\$916,492	\$43,000	\$959,492
Harness Racing Permitholders								
	Isle Casino and Racing at Pompano Park	Broward	\$9,663,294	\$1,323,348	\$10,986,642	\$1,098,682	\$45,000	\$1,143,682
Quarter Horse Racing Permitholders								
	Gretna Racing, LLC	Gadsden	\$2,307,904	\$100,685	\$2,408,589	\$240,259	\$15,000	\$255,259
	South Florida Racing Association, LLC (Hialeah Park)	City of Hialeah	7,711,614	455,102	\$8,166,716	816,672	33,000	849,672
	South Marion Real Estate Holdings, LLC	Marion	3,567,149	279,695	\$3,846,844	384,684	25,000	409,684
	Total Quarter Horse Permitholders		\$13,580,667	\$835,482	\$14,416,149	\$1,441,615	\$73,000	1,514,615
	TOTAL FOR ALL PERMITHOLDERS		\$147,486,043	\$9,428,031	\$156,914,074	\$15,692,825	\$808,000	\$16,500,825

(A) 1/8th of total gross receipts tax is distributed to counties or municipalities by October 1st of the following year.

(B) Amounts shown are table fees collected during fiscal year 2016/2017.

(C) Permitholder paid table fees and received cardroom license for 2016/2017, but did not conduct cardroom operations during 2016/2017.

SLOT COMPARATIVE DATA

During Fiscal Year 2016/2017, the total amount wagered by patrons was \$8,432,779,498. Total net slot revenue was \$549,255,201. As a result, the total taxes paid to the state was \$192,239,320, an increase of two percent in total paid slot taxes from the previous fiscal year. A total of \$15,750,000 was collected in annual fees, including the Compulsive or Addictive Gambling Prevention Program Fee, per section 551.118(3), Florida Statutes. For further details, see the Summary of State Revenue From Pari-Mutuel, Cardroom, Slot Activity, and Indian Gaming Compact (page 31) of this report.

HISTORICAL SLOT FACILITY ACTIVITY		
Fiscal Year	Total Amount Wagered	Total State Revenue
2006/2007	\$1,114,108,466	\$49,620,582
2007/2008	\$3,023,981,126	\$120,560,317
2008/2009	\$2,701,341,778	\$103,895,351
2009/2010	\$3,840,468,455	\$138,125,105
2010/2011	\$5,054,297,731	\$125,063,886
2011/2012	\$6,045,432,393	\$143,962,346
2012/2013	\$6,690,513,855	\$152,532,223
2013/2014	\$7,953,652,039	\$174,024,068
2014/2015	\$7,979,515,007	\$182,584,841
2015/2016	\$8,237,416,807	\$187,977,011
2016/2017	\$8,432,779,498	\$192,239,320

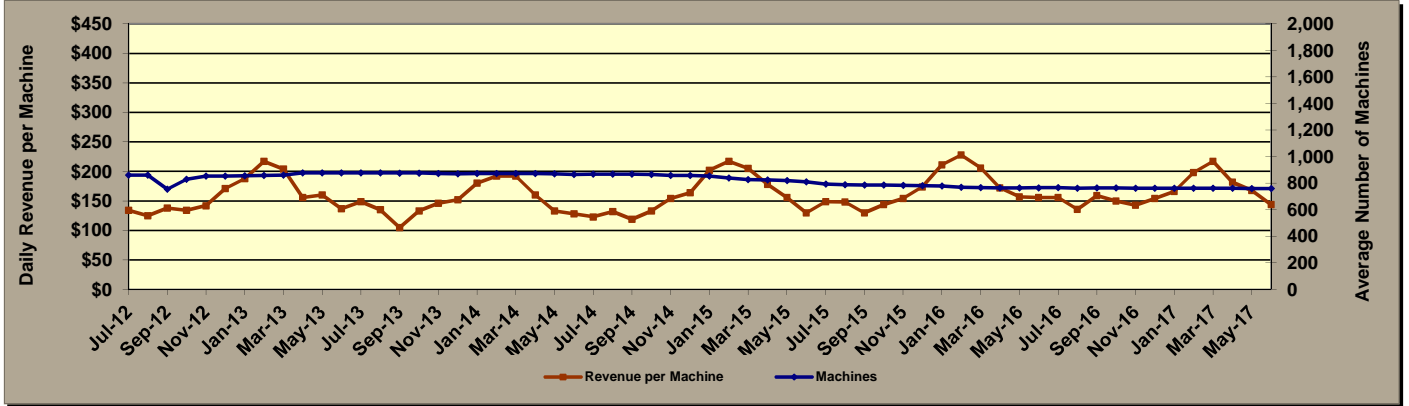
FISCAL YEAR 2016/2017									
	Gulfstream ⁽²⁾ Operations Began 11/15/2006	Mardi Gras ⁽²⁾ Operations Began 12/28/2006	Pompano Park ⁽²⁾ Operations Began 4/14/2007	West Flagler Operations Began 10/15/2009	Calder ⁽²⁾ Operations Began 1/22/2010	Miami Jai Alai ⁽²⁾ Operations Began 1/23/2012	Hialeah Park Operations Began 8/14/2013	Dania Jai Alai Operations Began 2/20/2014	TOTAL
Average Number of Machines	763	885	1,452	798	1,087	1,034	862	843	7,724
Number of Operating Days	364	364	364	365	363	364	365	365	365
Average Daily Revenue per Machine	\$164	\$138	\$265	\$277	\$198	\$169	\$234	\$75	\$195
Amount Wagered	\$768,227,111	\$684,207,220	\$1,789,761,251	\$1,317,721,632	\$1,110,476,466	\$1,138,137,109	\$1,248,775,177	\$395,473,532	\$8,432,779,498
Amount Won By Patrons	\$711,985,096	\$608,911,989	\$1,627,050,758	\$1,232,706,304	\$1,010,526,086	\$1,063,952,079	\$1,167,179,689	\$386,364,077	\$7,788,676,078
Promotional Credits	\$10,773,443	\$10,862,696	\$22,623,310	\$4,452,251	\$21,906,484	\$10,636,396	\$8,008,280	\$6,205,744	\$95,468,604
30-Day Unclaimed Tickets	\$91,120	\$27,825	\$146,240	\$64,254	\$41,697	\$128,644	\$37,657	\$21,138	\$558,575
Net Slot Machine Revenue	\$45,559,692	\$44,460,360	\$140,233,423	\$80,651,268	\$78,092,572	\$63,677,278	\$73,655,759	\$22,924,849	\$549,255,201
State Tax Revenue ⁽¹⁾	\$15,945,892	\$15,561,126	\$49,081,698	\$28,227,944	\$27,332,400	\$22,287,047	\$25,779,516	\$8,023,697	\$192,239,320
Permit Holder Revenue	\$29,613,800	\$28,899,234	\$91,151,725	\$52,423,324	\$50,760,172	\$41,390,231	\$47,876,243	\$14,901,152	\$357,015,881
Total State Revenue as a Percent of Amount Wagered	2.08%	2.34%	2.74%	2.14%	2.46%	1.96%	2.06%	2.03%	2.28%

(1) Taxes paid on net slot machine revenue were accounted for by the division, then immediately transferred to the Department of Education's Educational Enhancement Trust Fund.

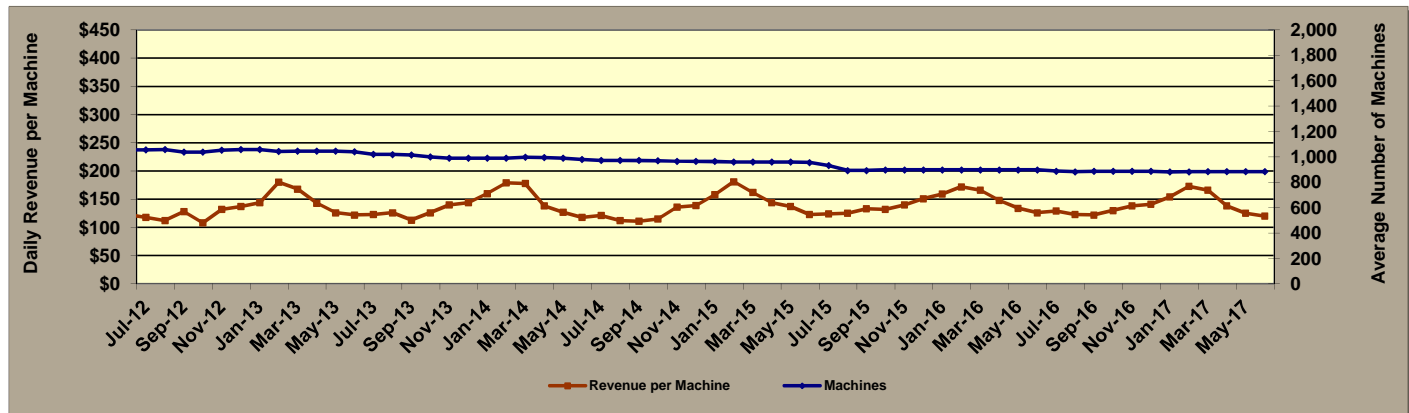
(2) Facilities closed 10/6/2016 due to Hurricane Matthew. Calder was closed 10/5/2016 and 10/6/2016.

Daily Revenue per Machine Compared to Average Number of Machines For Fiscal Years 2012/2013 - 2016/2017

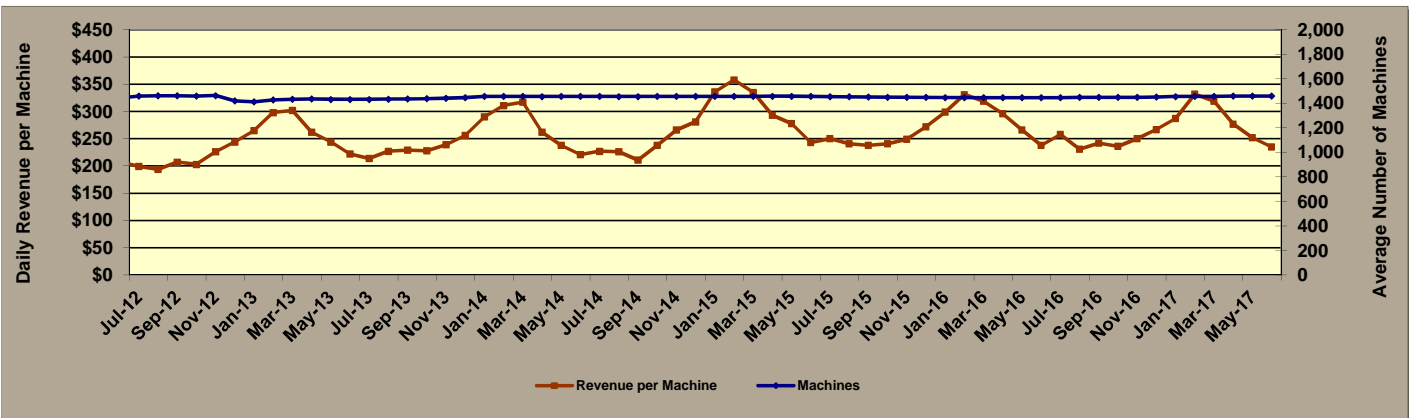
GULFSTREAM PARK RACING AND CASINO⁽²⁾



MARDI GRAS RACETRACK AND GAMING CENTER⁽²⁾

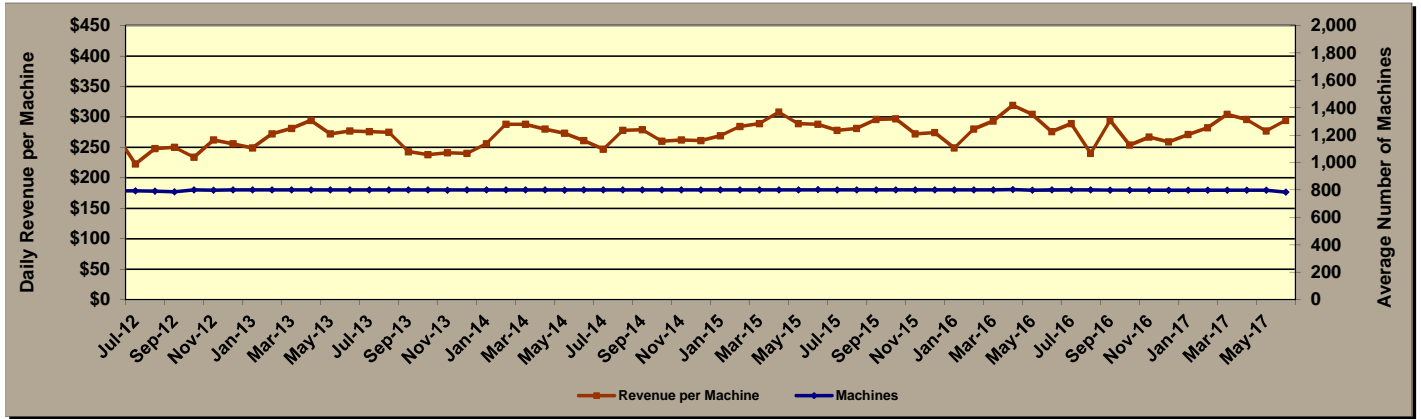


ISLE CASINO AND RACING AT POMPANO PARK⁽²⁾

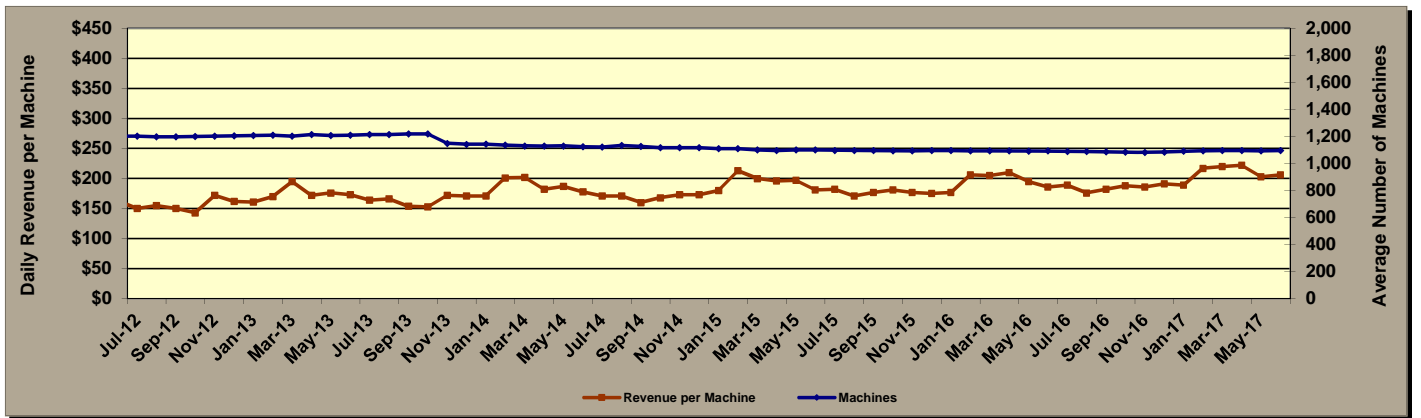


Daily Revenue per Machine Compared to Average Number of Machines For Fiscal Years 2012/2013 - 2016/2017

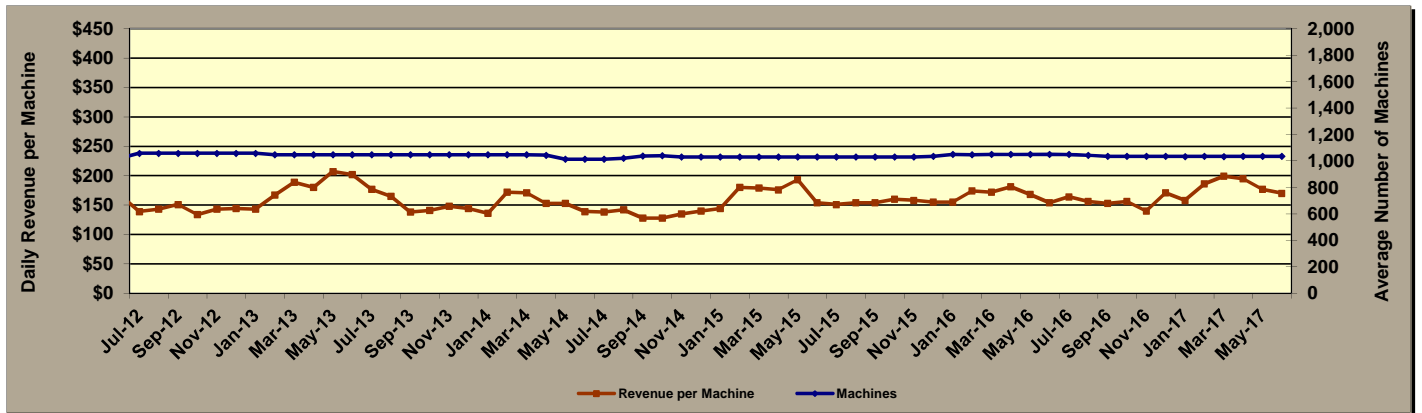
FLAGLER DOG TRACK AND MAGIC CITY CASINO



CALDER CASINO AND RACE COURSE⁽²⁾

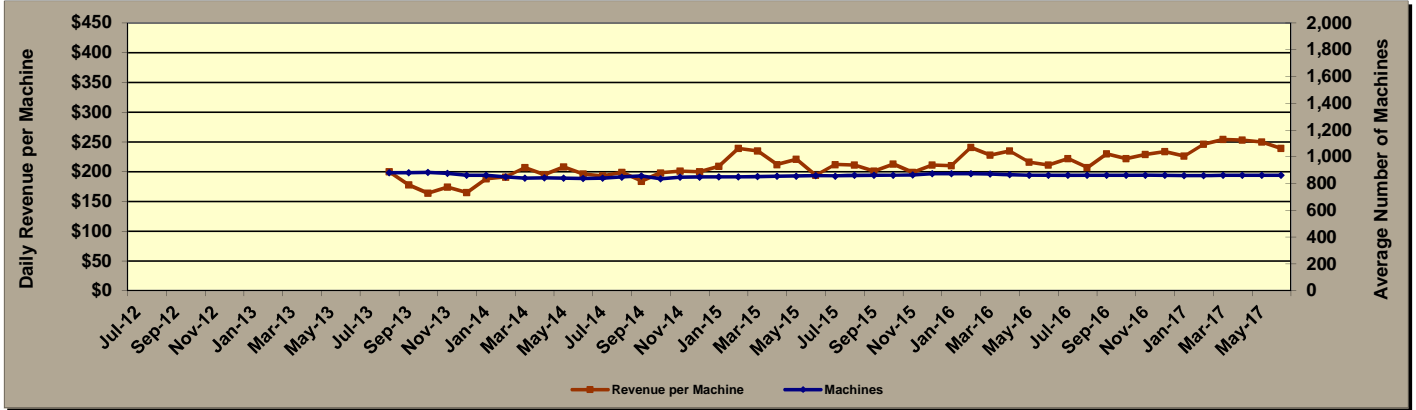


MIAMI CASINO AND JAI ALAI⁽²⁾

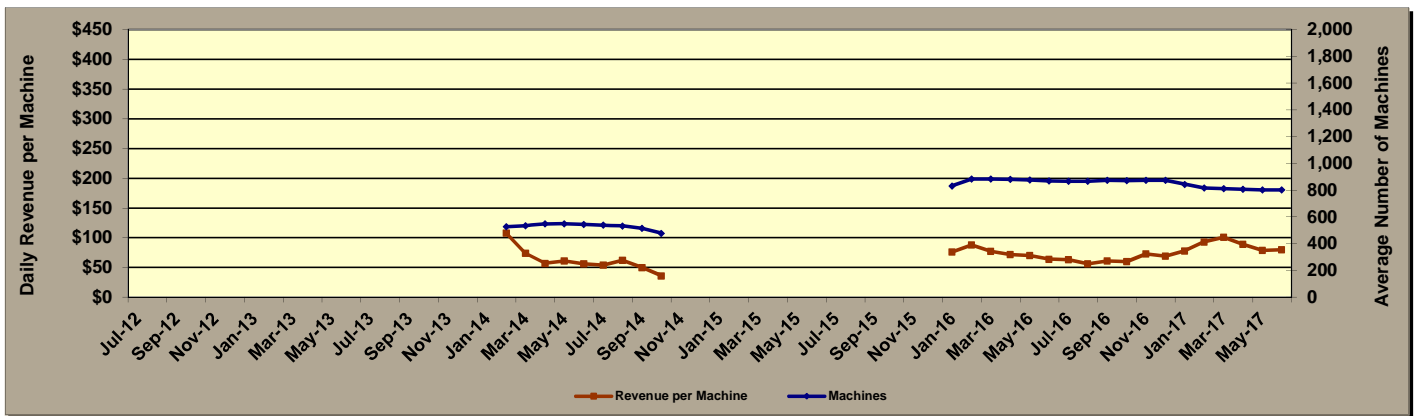


Daily Revenue per Machine Compared to Average Number of Machines For Fiscal Years 2012/2013 - 2016/2017

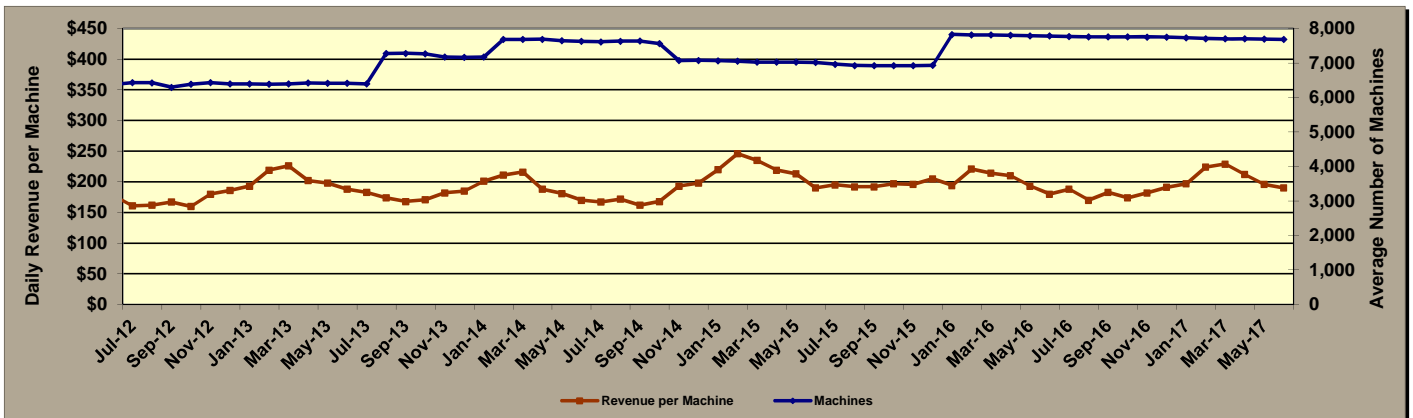
HIALEAH PARK RACING AND CASINO



CASINO AT DANIA BEACH⁽¹⁾



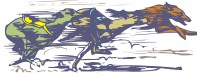
ALL FACILITIES COMBINED



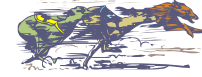
(1) The Casino at Dania Beach did not operate slots October 13, 2014 through January 12, 2016.

(2) Facilities closed October 6, 2016 due to Hurricane Matthew. Calder was closed October 5, 2016 and October 6, 2016.

DATA BY PERMITHOLDER/FACILITY



GREYHOUND PERMITHOLDERS



Florida has 19 permitholders that operated at 12 tracks throughout the state. A total of 3,455 completed performances, including charity and scholarship performances, were conducted during this past fiscal year, an increase of approximately 2.5 percent from the previous year.

During Fiscal Year 2016/2017, handle wagered on live greyhound performances decreased by approximately five percent. Intertrack handle wagered on broadcasts of live Florida greyhound performances decreased by approximately five percent. Simulcast handle wagered on broadcasts of performances from outside the state decreased by approximately 13 percent. Intertrack simulcast handle wagered on broadcast of performances from outside the state decreased by approximately eight percent. Overall, there was a decrease in total handle by approximately six percent for the Florida greyhound industry.

Total paid attendance decreased by approximately six percent from the prior year. The division reports only paid attendance and does not include free admissions or complimentary passes in its data. Total greyhound revenue to the state decreased by approximately 22 percent during Fiscal Year 2016/2017. The greyhound industry accounted for approximately 24.69 percent of Florida's total pari-mutuel revenue and 31.56 percent of total handle from pari-mutuel performances.

Greyhound permitholders reported paying a total of \$25,923,233 in purses during Fiscal Year 2016/2017. For more detail on purses paid, please refer to the following information by permitholder. The division was able to confirm reported purse amounts from the weekly purse reports submitted in accordance with Section 61D-8.006, Florida Administrative Code.

All of Florida's greyhound permitholders actively sponsor greyhound adoption programs. Many of the state's greyhound tracks provide for on-site adoption booths, animal welfare, funding, advertising, special events and public information. Section 550.1647, Florida Statutes, provides a greyhound permitholder with credits in an amount equal to the uncashed pari-mutuel tickets remitted in the prior state fiscal year to the state, which is applied against any taxes imposed the next fiscal year. Additionally, Section 550.1647, Florida Statutes, requires each permitholder to pay an amount not less than 10 percent of the credit provided by this section to any bona fide organization that promotes or encourages the adoption of greyhounds. During Fiscal Year 2016/2017, total contributions provided to greyhound adoption units amounted to \$212,470; which met or exceeded the minimum statutory requirement.

Total Live Performances (Complete and counted toward a full schedule) ⁽¹⁾	3,455	Number of Races	44,562
(1) Performances where eight or more races were held.			
Total Live Performances (Actual)	3,461	Total Paid Attendance	238,870
Total Racing Days	2,349	Total Admission Tax	\$7,784

Permitholder	County	Meet Period	Live Performances (Complete and counted toward full schedule)	Live Performances (Actual)	Racing Days	Number of Races	Purses Paid	Paid Attendance	Total Admission Tax
Daytona Beach Kennel Club, Inc. 960 South Williamson Blvd. Daytona Beach, FL 32114-7247	Volusia	1/2/2017 to 6/30/2017	206	206	155	3,095	\$1,009,468	0	\$0
Derby Lane (St. Petersburg Kennel Club, Inc.) 10490 Gandy Blvd. St. Petersburg, FL 33702-2395	Pinellas	1/2/2017 to 6/30/2017	206	206	129	3,088	\$2,109,956	0	\$0
Ebro Greyhound Park (Washington County Kennel Club, Inc.) 6558 Dog Track Rd. Ebro, FL 32437-1142	Washington	7/1/2016 to 9/5/2016 and 5/6/2017 to 6/30/2017	170	172	86	1,374	\$439,507	7,408	\$0
Flagler Dog Track (West Flagler Associates, Ltd.) 401 N.W. 38th Court Miami, FL 33126-5638	Dade	7/1/2016 to 10/29/2016 and 6/3/2017 to 6/30/2017	167	167	106	1,751	\$3,391,672	0	\$0
Hartman and Tyner, Inc. (Mardi Gras Racetrack & Gaming Center) 831 North Federal Hwy Hallandale Beach, FL 33009-2410	Broward	12/1/2016 to 2/18/2017	114	114	57	1,025	\$1,083,000	0	\$0
H&T Gaming, Inc. (Mardi Gras Racetrack & Gaming Center) 831 North Federal Hwy Hallandale Beach, FL 33009-2410	Dade	2/20/2017 to 4/30/2017 at Mardi Gras	103	104	52	926	\$988,000	0	\$0
Jacksonville Kennel Club, Inc. (Jacksonville Greyhound Racing, Inc.) 201 Monument Rd. Jacksonville, FL 32225-8106	Duval	7/1/2016 to 10/2/2016 at Orange Park	107	107	81	1,605	\$1,056,185	0	\$0
License Acquisitions, LLC (Palm Beach Greyhound Racing) 1111 North Congress Ave. West Palm Beach, FL 33409-6317	Palm Beach	7/1/2016 to 9/30/2016 at Palm Beach	118	119	92	1,771	\$987,042	2,152	\$3

Permit holder	County	Meet Period	Live Performances (Complete and counted toward full schedule)	Live Performances (Actual)	Racing Days	Number of Races	Purses Paid	Paid Attendance	Total Admission Tax
Melbourne Greyhound Park, LLC 1100 North Wickham Rd. Melbourne, FL 32935-8941	Brevard	1/2/2017 to 4/15/2017	105	105	90	943	\$395,114	0	\$0
Naples - Ft. Myers Greyhound Track (Southwest Florida Enterprises, Inc.) 10601 Bonita Beach Rd. Bonita Springs, FL 34135-5620	Lee	11/4/2016 to 5/29/2017	392	394	176	3,674	\$1,738,621	145,228	\$7,370
Orange Park Kennel Club, Inc. (Jacksonville Greyhound Racing, Inc.) 455 Park Ave. Orange Park, FL 32073-3101	Clay	10/3/2016 to 11/27/2016 and 5/1/2017 to 6/30/2017	131	131	98	1,965	\$1,307,538	0	\$0
Palm Beach Kennel Club (Investment Corporation of Palm Beach) 1111 North Congress Ave. West Palm Beach, FL 33409-6317	Palm Beach	10/1/2016 to 6/30/2017	347	347	270	5,200	\$3,261,094	5,791	\$97
Penn Sanford, LLC (Sanford-Orlando Kennel Club) 301 Dog Track Rd. Longwood, FL 32750-6558	Seminole	7/1/2016 to 12/31/2016	168	168	118	2,505	\$802,764	0	\$0
Pensacola Greyhound Racing, LLP 951 Dog Track Rd. Pensacola, FL 32506-8236	Escambia	7/1/2016 to 10/2/2016 and 1/20/2017 to 6/30/2017	159	159	127	1,570	\$821,043	0	\$0
SOKC, LLC (Sanford-Orlando Kennel Club) 301 Dog Track Rd. Longwood, FL 32750-6558	Seminole	1/2/2017 to 6/30/2017	180	180	129	2,649	\$916,529	0	\$0
Sarasota Kennel Club, Inc. 5400 Bradenton Rd. Sarasota, FL 34234-2999	Sarasota	11/4/2016 to 4/22/2017	193	193	144	2,597	\$803,490	78,291	\$314
St. Johns Greyhound Park, a/k/a Bayard Raceways, Inc. (Jacksonville Greyhound Racing, Inc.) 6322 Racetrack Rd. St. Johns, FL 32259-2107	St. Johns	11/28/2016 to 4/30/2017 at Orange Park	174	174	130	2,610	\$1,845,951	0	\$0
Tampa Greyhound Track (TBDG Acquisition, LLC) 755 East Waters Ave. Tampa, FL 33604-3107	Hillsborough	7/1/2016 to 12/31/2016 at Derby Lane	210	210	156	3,142	\$2,108,398	0	\$0
West Volusia Racing, Inc. 882-4 Saxon Blvd. Orange City, FL 32763	Volusia	7/1/2016 to 12/31/2016 at Daytona	205	205	153	3,072	\$857,861	0	\$0



JAI ALAI PERMITHOLDERS



Florida was the first state in the nation to conduct jai alai performances, with the first fronton being built in 1926. There were eight jai alai permitholders operating at six frontons throughout Florida. Florida is now the only state where pari-mutuel wagering on live jai alai games is conducted. A total of 713 completed performances, including charity and scholarship performances, were conducted during this past fiscal year, a decrease of approximately 17 percent from the previous fiscal year.

During Fiscal Year 2016/2017, handle wagered on live jai alai performances decreased by approximately four percent. Intertrack handle wagered on broadcasts of live Florida jai alai performances increased by approximately 13 percent. Total handle increased by approximately seven percent for the Florida jai alai industry.

Total jai alai revenue to the state decreased by approximately eight percent during Fiscal Year 2016/2017. The jai alai industry accounted for approximately 3.33 percent of Florida's total pari-mutuel revenue and 2.05 percent of total handle from pari-mutuel performances.

Permitholders reported paying a total of \$4,411,949 in players' awards. For more detail on players' awards paid, please refer to the following information by permitholder.

There was minimal change in paid attendance from the prior year. The division reports only paid attendance and does not include free admissions or complimentary passes in its data.

Total Live Performances (Complete and counted toward a full schedule) ⁽¹⁾	713	Number of Games	7,522	
(1) Performances where eight or more races were held.				
Total Live Performances (Actual)	714	Total Paid Attendance	2	
Total Gaming Days	568	Total Admission Tax	\$0	

Permitholder	County	Meet Period	Live Performances (Complete and counted toward full schedule)	Live Performances (Actual)	Gaming Days	Number of Games	Players' Awards Paid	Paid Attendance	Total Admission Tax
Dania Jai Alai (Dania Entertainment Center, LLC) 301 East Dania Beach Blvd. Dania Beach, FL 33004-3016	Broward	11/1/2016 to 4/15/2017	171	171	128	1,718	\$880,861	0	\$0
Dania Summer Jai Alai (Dania Entertainment Center, LLC) 301 East Dania Beach Blvd. Dania Beach, FL 33004-3016	Broward	9/15/2016 to 10/31/2016 and 5/2/2017 to 6/30/2017 at Dania	113	113	83	1,138	\$675,242	0	\$0
Ft. Pierce Jai Alai (Fronton Holdings, LLC) 1750 South Kings Highway Ft. Pierce, FL 34945-3099	St. Lucie	6/1/2017 to 6/25/2017	40	40	22	320	\$144,355	0	\$0
Kings Key Court, LLC 355 East Palm Dr. Florida City, FL 33034	Dade	6/11/2017 to 6/18/2017	2	2	2	16	\$11,757	0	\$0
Miami Jai Alai (Fronton Holdings, LLC) 3500 N.W. 37th Ave. Miami, FL 33142-4923	Dade	11/2/2016 to 4/30/2017	153	153	153	1,836	\$1,272,042	0	\$0
Ocala Gainesville Poker and Jai Alai (OBS Real Estate Holdings, LLC) 4601 West Highway 318 Citra, FL 32113	Marion	5/1/2017 to 5/29/2017	40	41	21	326	\$125,565	0	\$0
Orlando Live Events (RB Jai Alai, LLC) 6405 South Highway 17-92 Fern Park, FL 32730-2057	Seminole	6/12/2017 to 6/16/2017	40	40	5	320	\$2,576	2	\$0
Summer Jai Alai Partnership 3500 N.W. 37th Ave. Miami, FL 33142-4923	Dade	7/1/2016 to 10/31/2016 and 5/1/2017 to 6/30/2017 at Miami	154	154	154	1,848	\$1,299,551	0	\$0

Miscellaneous Revenue to State

(See Section 550.09511(4), Florida Statutes, for detail.)

Ft. Pierce Jai Alai	35,178.45
Ocala Jai Alai	22,000.00
Orlando Live Events	32,560.00
Total	\$89,738.45



THOROUGHBRED PERMITHOLDERS



Florida continues to be a premier thoroughbred racing state with five permitholders that operated at three tracks located in Central and South Florida. A total of 331 completed performances, including charity and scholarship performances, were conducted during this past fiscal year, with no change from the previous fiscal year.

During Fiscal Year 2016/2017, handle on live thoroughbred performances decreased by less than one percent. Handle from intertrack wagering increased approximately six percent. Simulcast handle wagered on broadcasts of performances from outside the state decreased by approximately 5 percent. Intertrack simulcast handle decreased by approximately three percent. Overall, total handle decreased by approximately one percent for the Florida thoroughbred industry.

Total thoroughbred revenue to the state during Fiscal Year 2016/2017, decreased by approximately two percent from the prior year. The thoroughbred industry accounted for approximately 62.71 percent of Florida's total pari-mutuel revenue and 60.99 percent of total handle from pari-mutuel performances.

Permitholders reported paying a total of \$87,885,070 in purses. For more detail on purses paid, please refer to the following information by permitholder. The Florida Horsemen's Benevolent and Protective Association and Tampa Bay Horsemen's Benevolent and Protective Association, Inc., did not disagree with the amount of purses paid reported by the permitholders.

Total paid attendance increased by approximately two percent from the prior year. The division reports only paid attendance and does not include free admissions or complimentary passes in its data.

Total Live Performances (Complete and counted toward a full schedule) ⁽¹⁾	331	Number of Races	3,342
(1) Performances where eight or more races were held.			
Total Live Performances (Actual)	331	Total Paid Attendance	94,748
Total Racing Days	331	Total Admission Tax	\$30,045

Permitholder	County	Meet Period	Live Performances (Complete and counted toward full schedule)	Live Performances (Actual)	Racing Days	Number of Races	Purses Paid	Paid Attendance	Total Admission Tax
Calder Race Course, Inc. (Churchill Downs, Inc.) 21001 N.W. 27th Ave. Miami Gardens, FL 33056-1461	Dade	10/5/2016 to 11/27/2016	37	37	37	346	\$7,593,910	0	\$0
Gulfstream Park Racing Association, Inc. (Stronach Group) 901 S. Federal Hwy Hallandale Beach, FL 33009-7124	Broward	7/1/2016 and 12/3/2016 to 5/14/2017 and 6/30/2017	119	119	119	1,265	\$41,077,850	2211	\$0
Gulfstream Park Thoroughbred After Racing Program, Inc. (Stronach Group) 901 S. Federal Hwy Hallandale Beach, FL 33009-7124	Broward	7/2/2016 to 9/8/2016	42	42	42	441	\$12,964,220	0	\$0
Tampa Bay Downs, Inc. 11225 Race Track Rd. Tampa, FL 33626-3122	Hillsborough	7/1/2016 and 11/26/2016 to 5/7/2017 and 6/30/2017	91	91	91	863	\$14,869,910	92,537	\$30,045
Tropical Park, LLC 21001 N.W. 27th Ave. Miami Gardens, FL 33056-1461	Dade	9/9/2016 to 10/1/2016 and 5/17/2017 to 6/29/2017 at Gulfstream Park	42	42	42	427	\$11,379,180	0	\$0



HARNESS PERMITHOLDERS



Pompano Park is the only permitholder conducting harness horse racing performances in the State of Florida. A total of 126 completed performances, including charity and scholarship performances, were conducted during this past fiscal year, which is the same as the previous year.

During Fiscal Year 2016/2017, handle wagered on live harness performances decreased by approximately 26 percent. Intertrack handle wagered on broadcasts of live Florida harness performances decreased by approximately eight percent. Simulcast handle wagered on broadcasts of performances from outside the state decreased by approximately 18 percent while intertrack simulcast handle decreased by approximately seven percent. Overall, total handle decreased by approximately 12 percent for the Florida harness industry.

Total revenue to the state during Fiscal Year 2016/2017, decreased by approximately six percent from the prior fiscal year. The harness industry accounted for approximately 8.37 percent of Florida's total pari-mutuel revenue and 5.38 percent of total handle from pari-mutuel performances.

Pompano Park reported paying \$8,168,087 in purses. For more detail on purses paid, please refer to the information below. The Florida Standardbred Breeders' and Owners' Association was able to confirm the amount of purses paid reported by Pompano Park.

The division reports only paid attendance and does not include free admissions or complimentary passes in its data.

Total Live Performances (Complete and counted toward a full schedule) ⁽¹⁾	126	Number of Races	1,237
(1) Performances where eight or more races were held.			
Total Live Performances (Actual)	126	Total Paid Attendance	0
Total Racing Days	126	Total Admission Tax	\$0

Permitholder	County	Meet Period	Live Performances (Complete and counted toward full schedule)	Live Performances (Actual)	Racing Days	Number of Races	Purses Paid	Paid Attendance	Total Admission Tax
Isle Casino and Racing at Pompano Park (PPI, Inc.) 1800 S.W. 3rd St. Pompano Beach, FL 33069	Broward	10/2/2016 to 5/30/2017	126	126	126	1,237	\$8,168,087	0	\$0



QUARTER HORSE PERMITHOLDERS



There were five permitholders conducting quarter horse racing performances at five tracks located in the State of Florida. In Fiscal Year 2016/2017, a total of 100 completed performances were conducted, a decrease of approximately 15 percent from the previous fiscal year.

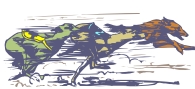
During Fiscal Year 2016/2017, handle wagered on live quarter horse performances decreased by approximately 94 percent. Intertrack handle wagered on broadcasts of performances decreased by 100 percent. There was no simulcast handle wagered on broadcasts of performances from outside the state, along with no intertrack simulcast handle. Overall, total handle decreased by approximately 95 percent for the Florida quarter horse industry.

Total quarter horse revenue to the state during Fiscal Year 2016/2017, decreased by approximately 32 percent. The quarter horse industry accounted for approximately 0.90 percent of Florida's total pari-mutuel revenue and 0.02 percent of total handle from pari-mutuel performances.

Permitholders reported paying a total of \$1,710,500 in purses. For more detail on purses paid, please refer to the following information by permitholder. The North Florida Horsemen's Association, South Florida Quarter Horse Association, and Central Florida Horsemen's Association were able to confirm the amount of purses paid reported by Gretna Racing, Hialeah Park, and Oxford Downs. The Hamilton Quarterhorse Barrel Racing Association did not disagree with the amount of purses paid reported by Hamilton Downs Horsetrack, and Ocala Breeder's Sales reported purses paid are from one performance.

Total Live Performances (Complete and counted toward a full schedule) ⁽¹⁾	100	Number of Races	800
(1) Performances where eight or more races were held.			
Total Live Performances (Actual)	100	Total Paid Attendance	0
Total Racing Days	41	Total Admission Tax	\$0

Permitholder	County	Meet Period	Live Performances (Complete and counted toward full schedule)	Live Performances (Actual)	Racing Days	Number of Races	Purses Paid	Paid Attendance	Total Admission Tax
Gretna Racing, LLC 501 Racetrack Drive Gretna, FL 32332	Gadsden	4/8/2017 to 6/25/2017	32	32	8	256	\$167,000	0	\$0
Hamilton Downs Horsetrack, LLC 2220 N.W County Road 143 Jennings, FL 32053	Hamilton	12/3/2016 to 12/7/2016	8	8	2	64	\$9,500	0	\$0
Hialeah Park (South Florida Racing Association, LLC) 2200 E. 4th Ave. Hialeah, FL 33013	Dade	5/31/2017 to 6/25/2017	40	40	20	320	\$1,004,000	0	\$0
Ocala Breeder's Sales Company, Inc. 1701 S.W. 60th Ave. Ocala, FL 34474-1800	Marion	1/24/2017	1	1	1	8	\$338,000	0	\$0
Oxford Downs (South Marion Real Estate Holdings, LLC) 17996 S. US Highway 301 Summerfield, FL 34491	Marion	6/5/2017 to 6/23/2017	19	19	10	152	\$192,000	0	\$0



SUMMARY

PARI-MUTUEL INDUSTRY

During Fiscal Year 2016/2017, the total handle wagered for all industries exceeded \$717 million, a decrease of approximately three percent from the prior fiscal year. Total pari-mutuel completed performances, including charity and scholarship performances, conducted during Fiscal Year 2016/2017 decreased by approximately two percent from the previous fiscal year.

The state realized revenue from performances of approximately \$9 million, a decrease of roughly eight percent from the prior fiscal year. Of the \$9 million collected, greyhound permitholders accounted for 24.69 percent, thoroughbreds for 62.71 percent, harness for 8.37 percent, jai alai for 3.33 percent, and quarter horse for 0.90 percent.

Total paid attendance decreased approximately four percent from the prior year. The division reports only paid attendance and does not include free admission or complimentary passes in its data.



HORSE RACING

Promotional Programs for Florida-Bred Horses *

Florida breeder promotions and award programs are administered by private breeders' and owners' associations organized to promote ownership and breeding of race horses in the State of Florida. Each association conducts its own campaign to enhance the horse breeding industry in the state and provides breeders' and owners' awards of up to 20 percent of announced gross purses. The Florida Standardbred Breeders' and Owners' Association is funded by the breaks and uncashed tickets from live performances and one percent of the intertrack handle. The Quarter Horse Breeders' Association is funded by the breaks and the uncashed tickets from live races and one percent of the live and intertrack handle. The Florida Thoroughbred Breeders' and Owners' Association awards program is funded by 0.955 percent of the live, simulcast, and intertrack handle, as well as 3.475 percent of the gross revenue from out-of-state wagers on Florida races.

To date, the Florida thoroughbred breeding industry has produced 50 national champions. Florida also produced "Affirmed", the eleventh horse to have swept the Triple Crown (1978). Ocala/Marion County, Florida, is home to some of the leading breeding farms in the country. The industry boasts 19 classic wins (Kentucky Derby, Preakness Stakes, and Belmont Stakes), 26 Breeders' Cup Day champions and six horses of the year.

The Florida Thoroughbred Breeders' and Owners' Association (FTBOA) funds the Florida-bred Stakes Program, which is implemented at Florida's Thoroughbred racetracks. Through a percentage of pari-mutuel handle, Florida Thoroughbred permitholders contributed \$7,851,246 to the FTBOA during Fiscal Year 2016/2017. The FTBOA paid out \$6,369,509 in Breeders' Awards and \$2,033,985 through the Florida-bred Stakes Program. The Florida-bred Stakes Program includes "Florida Sire Stakes" at Gulfstream Park, "Sunshine Millions Preview" at Gulfstream Park West, "Florida Cup Day" at Tampa Bay Downs, and additional funds for supplements to Florida-bred Preferred Stakes Races during the Gulfstream and Tampa Bay Downs' meets.

The Florida Standardbred Breeders' and Owners' Association, a non-profit organization and the only organized representative of Standardbred horsemen in the State of Florida, is the designated association for the allocation and distribution of funds for Florida-bred racing. Promotional activities include providing breeder and stallion awards for eligible Florida-bred horses during Pompano Park's 2016/2017 meet as well as awards for Florida Breeders' Stake races. The FSBOA also inaugurated a Breeder Incentive program in 2014 with the goal of offering Standardbred breeders a financial reward for the production of Florida-bred foals. This program will continue in future years. A series of races and awards were also provided for two and three-year-old Standardbreds to prepare for the winter meet at Pompano Park. The total amount of funds collected and distributed to the Florida Standardbred horsemen throughout the year exceeded \$952,920. Additionally, the program rewarded Florida breeding farm participants over \$96,000 to breeders supporting family farms and producers in Florida.

Section 550.2625(5)(a), Florida Statutes, designates the Florida Quarter Horse Breeders' and Owners' Association (FQHBOA) as the authorized organization to receive breeders and awards payments from the permitholders and make payments in accordance with Florida Statutes.

By agreement, Hialeah Park pays 2 percent of the total purse to FQHBOA for breeders' and owners' awards. This is in excess of statutory requirements. Other tracks pay a sum equal to the breaks plus one percent of all pari-mutuel pools conducted during their meets for supplementing purses and prizes for the general promotion of owning and breeding quarter horses in Florida as authorized in Florida Statutes.

During 2016/2017, \$120,000 was paid out to 60 owners and breeders in awards. Total awards have increased each fiscal year since the first awards paid in 2009/2010.

** Note: This promotional program information is provided by respective Breeders' and Owners' Associations.*

**UNIVERSITY OF FLORIDA
COLLEGE OF VETERINARY MEDICINE RACING LABORATORY**

The Florida Racing Laboratory in the College of Medicine at the University of Florida is an International Organization for Standardization ISO 17025 accredited laboratory that employs various procedures to detect and identify prohibited drugs, medications, stimulants, depressants, hypnotics, local anesthetics, and drug-masking agents in the blood, urine, or other bodily fluids of racing horses and greyhounds.

During Fiscal Year 2016/2017, the Laboratory received and processed 67,940 samples and performed 296,732 analyses. The vigilant monitoring of samples by the Laboratory serves to deter the use of prohibited substances in racing animals in Florida.

	Horse Urine/Blood	Greyhound Urine ¹	Investigative
Samples Received	14,874	53,061	5
Samples Analyzed	14,575	37,151	5
Number of Analyses	69,973	226,746	13
Positives	188	81	N/A

¹ Volume Not Sufficient For Testing 15,657 samples (29.5% of total number of samples received).

DRUG POSITIVES FOR FISCAL YEAR 2016/2017		
Types of Positives (ARCI Drug Class)	Horse	Greyhound
Acepromazine metabolite (3)	4	0
Benzoyllecgonine (1)	0	22
Benzoyllecgonine (1), Cocaine (1), Ecgonine Methyl Ester (1)	0	1
Benzoyllecgonine (1), Cocaine (1)	0	1
Benzoyllecgonine (1), Ecgonine Methyl Ester (1)	1	6
Betamethasone (3)	6	0
Boldenone (3)	1	0
Boldenone (3), Clenbuterol (3)	1	0
Caffeine (2), Theophylline (3)	0	2
Caffeine (2), Theophylline (3), Theobromine (4)	0	36
Clenbuterol (3)	2	0
Dantrolene, 5-hydroxy (4)	6	0
Dexamethasone (4)	16	1
Dexamethasone (4), Dimethylsulfoxide (5)	1	0
Dexamethasone (4), Flunixin (4), Phenylbutazone (4)	2	0
Dexamethasone (4), Phenylbutazone (4)	2	0
Diclofenac (4)	1	0
Dimethylsulfoxide (DMSO) (5)	9	3
Firocoxib (4)	2	0
Flunixin (4)	3	0
Flunixin (4), Ketoprofen (4)	1	0
Flunixin (4), Ketoprofen (4), Phenylbutazone (4)	3	0
Flunixin (4), Phenylbutazone (4)	39	0
Flunixin (4), Phenylbutazone (4), Methocarbamol (4)	1	0
Furosemide (N/A)	5	0
Glycopyrrolate (4)	1	0
Isoflupredone (4)	1	0
Mepivacaine (2)	7	0
Methocarbamol (4)	26	0
Methylprednisolone (4)	5	0
Methylprednisolone (4), Dexamethasone (4)	1	0
Methylprednisolone (4), Dimethylsulfoxide (DMSO) (5)	1	0
Naproxen (4)	1	0
Omeprazole sulfide (5)	2	0
Phenylbutazone (4)	19	0
Testosterone (3)	1	0
Testosterone (3), Nandrolone (3)	1	0
Theobromine (4)	0	7
Theobromine (4), Theophylline (3)	0	2
Triamcinolone Acetonide (4)	4	0
Triamcinolone Acetonide (4), Xylazine (4)	1	0
Xylazine (4)	11	0
Sub Totals	188	81
Grand Total	269	

Class (1): Stimulant and depressant drugs that have the highest potential to affect performance and that have no generally accepted medical use in the racing horse.

Class (2): Drugs that have a high potential to affect performance, but less of a potential than drugs in Class 1.

Class (3): Drugs that may or may not have generally accepted medical use in the racing horse, but the pharmacology of which suggests less potential to affect performance than drugs in Class 2.

Class (4): This class includes therapeutic medications that would be expected to have less potential to affect performance than those in Class 3.

Class (5): This class includes therapeutic medications for which concentration limits have been established by the racing jurisdictions as well as certain miscellaneous agents such as dimethylsulfoxide (DMSO) and other medications as determined by the regulatory bodies.

FINANCIAL STATEMENTS

**DIVISION OF PARI-MUTUEL WAGERING
SUMMARY OF STATE REVENUE FROM PARI-MUTUEL, CARDROOM,
SLOT ACTIVITIES, AND INDIAN GAMING COMPACT
FISCAL YEAR 2016/2017**

State Revenue From Regular Performances	
Tax on Attendance	\$ 37,831
Daily License Fees	2,064,307
Tax on Handle	6,979,777
State Revenue From Pari-Mutuel Performances ⁽¹⁾	\$ 9,081,915
Other State Revenue	
Occupational Licenses	\$ 394,235
Fingerprint Fees	199,818
Escheated Tickets ⁽²⁾	795,999
Racing Scholarship Funds ⁽²⁾	1,288
PMW Trust Fund - Drug Fines	102,250
Miscellaneous Revenue	237,571
General Revenue Fund - Other Fines	113,350
Other State Revenue	\$ 1,844,511
Total Pari-Mutuel State Revenue	\$ 10,926,426
State Revenue From Cardrooms	
Table Fees	\$ 808,000
Gross Receipts ⁽³⁾	15,692,825
Occupational Licenses	123,912
Total State Revenue From Cardrooms	\$ 16,624,737
State Revenue From Slots	
Compulsive/Addictive Gambling Fee ⁽⁴⁾	\$ 1,750,000
Facility License Fee ⁽⁴⁾	14,000,000
Slot Taxes ⁽⁵⁾	192,239,320
Fingerprint Fees	23,052
Occupational Licenses	289,608
Miscellaneous Revenue	467,446
Miscellaneous Fines	900
Total State Revenue From Slots	\$ 208,770,326
Total State Revenue Generated From Pari-Mutuel, Cardroom, and Slots	\$ 236,321,489
State Revenue From Indian Gaming Compact	
Indian Gaming Compact ⁽⁶⁾	\$ 288,840,354
Indian Gaming Compact Reimbursements	279,382
Total State Revenue From Indian Gaming Compact	\$ 289,119,736
TOTAL STATE REVENUE GENERATED	\$ 525,441,225

(1) Daily license fees and taxes reported above are amounts collected and do not reflect amounts due.

(2) Escheated tickets and Racing Scholarship Funds are distributed to the Department of Education.

(3) One-half of cardroom gross receipts is deposited into the General Revenue Fund.

(4) Both amounts include payments from: Gulfstream Park Racing and Casino, Mardi Gras Racetrack and Gaming Center, Isle Casino and Racing at Pompano Park, Flagler Dog Track and Magic City Casino, Miami Jai Alai, Dania Jai Alai, and South Florida Racing Association (Hialeah Park). Payments from Calder are not included due to timing of when they were received.

(5) Slot taxes are distributed to the Department of Education.

(6) Indian Gaming Compact payments are deposited into the General Revenue Fund.

DEPARTMENT OF BUSINESS & PROFESSIONAL REGULATION
DIVISION OF PARI-MUTUEL WAGERING
BALANCE SHEET
SPECIAL REVENUE FUND
FOR FISCAL YEAR ENDED JUNE 30, 2017

	<u>2017</u>		<u>2016</u>
ASSETS			
Cash with State Treasurer	\$ 3,336,967	\$	3,024,475
Investments at cost	11,028,845		10,248,947
Accounts receivable	382,140		15,193,779
Taxes receivable	31,742,164		1,513,022
Allowance for uncollectibles	(14,277)		(183,157)
Interest receivable	36,499		19,113
Due from state funds	31,989		1,708
	<u>46,544,327</u>		<u>29,817,887</u>
TOTAL ASSETS	\$ 46,544,327	\$	29,817,887
 LIABILITIES & FUND EQUITY			
Liabilities:			
Accounts payable	\$ 39,863	\$	173,483
Accrued salaries	358,628		319,085
Due to other funds	32,066		647,645
Due to other state agencies	18,976,426		19,057,227
Due to general revenue	604,891		651,506
Compensated absences	239		-
	<u>20,012,114</u>		<u>20,848,946</u>
Total Liabilities	20,012,114		20,848,946
 Fund Equity			
Unreserved	<u>26,532,214</u>		<u>8,968,942</u>
Total Fund Equity	26,532,214		8,968,942
TOTAL LIABILITIES & FUND EQUITY	\$ 46,544,327	\$	29,817,887

The financial statements and notes are for informational purposes only.

**DEPARTMENT OF BUSINESS AND PROFESSIONAL REGULATION
DIVISION OF PARI-MUTUEL WAGERING
STATEMENT OF REVENUES, EXPENDITURES & CHANGES IN FUND BALANCE - BUDGET & ACTUAL
SPECIAL REVENUE FUND
FOR FISCAL YEAR ENDED JUNE 30, 2017**

	FINAL BUDGET	2017 ACTUAL	VARIANCE	2016 ACTUAL
REVENUES:				
Fees, Charges, Commissions and Sales	\$ 19,552,155	\$ 20,942,163	\$ 1,390,008	\$ 21,511,478
Licenses and Permits	552,304	518,147	(34,157)	653,268
Taxes	197,324,441	221,841,657	24,517,216	202,941,692
Fines, Forfeits, Judgments and Settlements	212,335	102,020	(110,315)	87,804
Interest and Dividends, Net	29,537	182,968	153,431	98,876
Refunds	250,000	284,215	34,215	335,772
Miscellaneous Receipts	211,412	231,783	20,371	2,703,150
Total Revenues	218,132,184	244,102,955	25,970,771	228,332,040
EXPENDITURES				
CURRENT OPERATING				
Salaries	6,922,047	6,558,597	363,450	6,361,633
Other Personal Services	1,949,984	1,741,423	208,561	1,500,785
Other Operating Expenditures	940,875	745,920	194,955	758,755
Operation of Motor Vehicles	87,743	46,829	40,914	43,350
Risk Management	231,861	231,861	-	175,120
State Attorney-Slots	227,709	227,709	-	223,876
PMW Lab Services	2,266,000	2,266,000	-	2,416,000
PMW Compliance System	296,476	246,396	50,080	246,396
Tr/DMS/HR SVCS/STW Contract	57,246	57,246	-	59,051
Cardroom Tax Distribution	1,841,207	1,841,207	-	1,698,724
Other Contracted Services	84,228	25,870	58,358	19,674
Compulsive Gambling Prevention	1,250,000	1,198,632	51,368	930,000
Racing Animal Med Research	100,000	77,562	22,438	69,839
OPERATING CAPITAL OUTLAY	23,895	2,992	20,903	2,412
Acquisition of Motor Vehicles	80,002	77,160	2,842	75,001
Assessment for Fingerprinting	550,600	393,604	156,996	431,828
Service Charge to General Revenue	3,150,000	2,967,075	182,925	3,026,924
Refunds	75,000	14,264	60,737	23,019
Transfer to FDLE Slots Investigation	-	-	-	-
Transfers to Other Funds	197,594,212	192,849,805	4,744,407	189,956,896
Transfers to General Revenue	23,000,000	15,000,000	8,000,000	16,500,000
Total Expenditures	240,729,085	226,570,151	14,158,933	224,519,283
Excess (Deficiency) of Revenues Over (Under) Expenditures	(22,596,901)	17,532,803	11,811,837	3,812,757
FUND BALANCE JULY 1, 2016	5,156,185	8,968,942	-	5,156,185
FUND BALANCE JUNE 30, 2017	\$ (17,440,716)	\$ 26,501,745	\$ 11,811,837	\$ 8,968,942

The financial statements and notes are for informational purposes only.

CARDROOM, PARI-MUTUEL, AND SLOT STATUTE MATRIX

STATUTE TOPIC	GREYHOUND	JAI ALAI	THOROUGHBRED	HARNESS	QUARTER HORSE
FEES					
Daily License Fees On Live / On-track Handle	\$80 per race. <u>550.0951(1)(a), F.S.</u>	\$40 per game. <u>550.0951(1)(a), F.S.</u>	\$100 per race. <u>550.0951(1)(a), F.S.</u>	\$100 per race. <u>550.0951(1)(a), F.S.</u>	\$100 per race. <u>550.0951(1)(a), F.S.</u>
Daily License Fees On Simulcast Handle	\$80 per race, but not to exceed \$500 per day. <u>550.0951(1)(a), F.S.</u>	\$40 per game, but not to exceed \$500 per day. <u>550.0951(1)(a), F.S.</u>	\$100 per race, but not to exceed \$500 per day. <u>550.0951(1)(a), F.S.</u>	\$100 race, but not to exceed \$500 per day. <u>550.0951(1)(a), F.S.</u>	\$100 per race, but not to exceed \$500 per day. <u>550.0951(1)(a), F.S.</u>
OUTS (ESCHEATS)					
Live / On-track Handle	Paid to the state of Florida. <u>550.1645(2), F.S.</u>	Paid to the state of Florida. <u>550.1645(2), F.S.</u>	Retained by permitholder. <u>550.2633(3), F.S.</u>	Paid to Florida Standardbred Breeders' and Owners' Association (FSBOA). <u>550.26165(1) and 550.2633(2)(a), F.S.</u>	Paid to Florida Quarter Horse Breeders' and Owners Association (FQHBOA). <u>550.26165(1) and 550.2633(2)(b), F.S.</u>
TAXES					
Tax On Admissions	15% of admission charge, or 10 cents, whichever is greater, for entrance to facility and grandstand. <u>550.0951(2)(a), F.S.</u> No tax is imposed on free passes or complimentary cards. <u>550.0951(2)(b) and (c), F.S.</u>	15% of admission charge, or 10 cents, whichever is greater, for entrance to facility and grandstand. <u>550.0951(2)(a), F.S.</u> No tax is imposed on free passes or complimentary cards. <u>550.0951(2)(b) and (c), F.S.</u>	15% of admission charge, or 10 cents, whichever is greater, for entrance to facility and grandstand. <u>550.0951(2)(a), F.S.</u> No tax is imposed on free passes or complimentary cards. <u>550.0951(2)(b) and (c), F.S.</u>	15% of admission charge, or 10 cents, whichever is greater, for entrance to facility and grandstand. <u>550.0951(2)(a), F.S.</u> No tax is imposed on free passes or complimentary cards. <u>550.0951(2)(b) and (c), F.S.</u>	15% of admission charge, or 10 cents, whichever is greater, for entrance to facility and grandstand. <u>550.0951(2)(a), F.S.</u> No tax is imposed on free passes or complimentary cards. <u>550.0951(2)(b) and (c), F.S.</u>
Tax On Live / On-track Handle	5.5% of handle, except for charity performances which is 7.6% of handle. <u>550.0951(3)(b)1., F.S.</u>	Effective July 1, 2000, a permitholder may not be taxed at a higher rate than 2%. <u>550.0951(3)(d), F.S.</u>	0.5% of handle. <u>550.09515(2)(a), F.S.</u>	0.5% of handle. <u>550.09512(2)(a), F.S.</u>	1% of handle. <u>550.0951(3)(a), F.S.</u>
Tax On Simulcast Handle	Allows permitholders to receive greyhound races from out-of-state, and are subject to taxation under 550.0951 and 550.09511. <u>550.3551(4), F.S.</u>	Allows permitholders to receive jai alai games from out-of-state, and are subject to taxation under 550.0951 and 550.09511. <u>550.3551(4), F.S.</u>	Allows permitholders to receive horse races from out-of-state, and are subject to taxation under 550.0951, 550.09512, and 550.09515. <u>550.3551(3) through 550.3551(3)(c), F.S.</u>	Allows permitholders to receive horse races from out-of-state, and are subject to taxation under 550.0951, 550.09512, and 550.09515. <u>550.3551(3) through 550.3551(3)(c), F.S.</u>	Allows permitholders to receive horse races from out-of-state, and are subject to taxation under 550.0951, 550.09512, and 550.09515. <u>550.3551(3) through 550.3551(3)(c), F.S.</u>

This matrix represents a summary of 2016 Statutes. Please refer to the cite noted by statutory topic for specific language governing pari-mutuel wagering.

STATUTE TOPIC	GREYHOUND	JAI ALAI	THOROUGHBRED	HARNESS	QUARTER HORSE
<p>Tax On Intertrack and Intertrack Simulcast Handle</p>	<p>5.5% of intertrack and intertrack simulcast handle; except for the intertrack handle from charity performances at a guest track within the market area of the host, the tax is 7.6%. <u>550.0951(3)(b)1 and 550.0951(3)(c)1, F.S.</u></p> <p>0.5% of intertrack and intertrack simulcast handle, if the guest is located outside market area of host and within market area of thoroughbred track conducting a live meet. <u>550.0951(3)(c)1, F.S.</u></p> <p>3.9% of intertrack and intertrack simulcast handle, for permitholders located in an area of the state where there are only 3 greyhound permitholders, located in 3 contiguous counties. <u>550.0951(3)(c)2, F.S.</u></p> <p>3.9% of intertrack and intertrack simulcast handle, for greyhound permitholders located in the same market area specified in 550.615(9). <u>550.0951(3)(c)2, F.S.</u></p>	<p>7.1% of intertrack and intertrack simulcast handle. <u>550.0951(3)(b)2, and 550.0951(3)(c)1, F.S.</u></p> <p>0.5% of intertrack and intertrack simulcast handle, if the guest is located outside market area of host and within market area of thoroughbred track conducting a live meet. <u>550.0951(3)(c)1, F.S.</u></p> <p>3.3% of intertrack and intertrack simulcast handle, if permitholder restricted from operating live on a year-round basis, and tax paid on intertrack handle exceeds that paid during 92/93 State Fiscal Year. <u>550.0951(3)(a), F.S.</u></p> <p>6.1% of intertrack and intertrack simulcast handle, for jai alai permitholders located in the market area as specified in 550.615(6) or (9), until the tax paid on intertrack handle in the current state fiscal year exceeds that paid during 92/93 State Fiscal Year, then tax on handle is 2.3%. <u>550.0951(3)(c)2, F.S.</u></p>	<p>2% of intertrack handle. <u>550.0951(3)(c)1, F.S.</u></p> <p>2.4% of intertrack simulcast handle. <u>550.0951(3)(c)1, and 550.0951(5), F.S.</u></p> <p>0.5% of intertrack and intertrack simulcast handle, if host and guest are thoroughbred permitholders, or if the guest is located outside market area of host and within market area of thoroughbred track conducting a live meet. <u>550.0951(3)(c)1, F.S.</u></p> <p>0.5% of intertrack and intertrack simulcast handle, if guest is located outside market area of host and within market area of thoroughbred track conducting a live meet. <u>550.0951(3)(c)1, F.S.</u></p> <p>0.5% of intertrack and intertrack simulcast handle, if guest is located outside market area of host and within market area of thoroughbred track conducting a live meet. <u>550.0951(3)(c)1, F.S.</u></p> <p>0.5% of intertrack simulcast handle, if guest track is a thoroughbred track located more than 35 miles from host track. <u>550.0951(5), F.S.</u></p>	<p>3.3% of intertrack handle. <u>550.0951(3)(c)1, F.S.</u></p> <p>1.5% of intertrack simulcast handle. <u>550.0951(3)(c)1, F.S.</u></p> <p>0.5% of intertrack and intertrack simulcast handle, if the guest is located outside market area of host and within market area of thoroughbred track conducting a live meet. <u>550.0951(3)(c)1, F.S.</u></p>	<p>2% of intertrack handle. <u>550.0951(3)(c)1, F.S.</u></p> <p>2.4% of intertrack simulcast handle. <u>550.0951(3)(c)1, and 550.0951(5), F.S.</u></p> <p>0.5% of intertrack and intertrack simulcast handle, if the guest is located outside market area of host and within market area of thoroughbred track conducting a live meet. <u>550.0951(3)(c)1, F.S.</u></p>
<p>CHARITY PERFORMANCES</p>	<p>Maximum of five days. <u>550.0351(1), F.S.</u></p> <p>Permitholders are allowed to conduct one additional day to be designated as "Greyhound Adopt-A-Pet Day." Proceeds are paid to "bona fide organizations" that promote the adoption of greyhounds. <u>550.1648(2), F.S.</u></p> <p>Permitholders shall pay from any source, including charity performances, not less than 10% of tax credit from escheated tickets to a bona fide greyhound adoption program. <u>550.1647, F.S.</u></p>	<p>Maximum of five days. <u>550.0351(1), F.S.</u></p> <p>Permitholders are allowed to conduct two additional performances known as "Retired Jai Alai Players' Charity Day" for a fund to benefit retired jai alai players. <u>550.0351(8), F.S.</u></p>	<p>Maximum of five days. <u>550.0351(1), F.S.</u></p> <p>One additional scholarship day to tracks located in Hillsborough County for the benefit of Pasco-Hernando Community College. <u>550.0351(6)(a) and 550.0351(6)(b), F.S.</u></p>	<p>Maximum of five days. <u>550.0351(1), F.S.</u></p>	<p>Maximum of five days. <u>550.0351(1), F.S.</u></p>

This matrix represents a summary of 2016 Statutes. Please refer to the cite noted by statutory language governing pari-mutuel wagering.

STATUTE TOPIC	GREYHOUND	JAI ALAI	THOROUGHBRED	HARNESS	QUARTER HORSE
TAX CREDITS & EXEMPTIONS (excluding charity performances, unless otherwise noted)	<p>Tax exemption of \$360,000 per state fiscal year, or \$500,000 for three permitholders that held a full live schedule in 1995, and closest to another state authorizing greyhound racing. <u>550.09514(1), F.S.</u></p> <p>Tax credit each state fiscal year equal to daily license fee on live races in previous state fiscal year. <u>550.0951(1)(a), F.S.</u></p> <p>Allows each permitholder that cannot utilize the full amount of the tax exemption or daily license fee tax credit, elect once per state fiscal year to transfer the unused portion to a greyhound permitholder acting as a host track for intertrack wagering. <u>550.0951(1)(b), F.S.</u></p> <p>Tax credit each state fiscal year in an amount equal to the amount remitted in escheated tickets in prior state fiscal year. <u>550.1647, F.S.</u></p>	<p>A permitholder that has incurred tax on handle and admissions that exceeds its operating earnings is entitled to credit the excess amount of taxes against its next ensuing meets. <u>550.09511(1)(b), F.S.</u></p> <p>Tax credit each state fiscal year equal to 25% of amount remitted in escheated tickets in prior state fiscal year. Funds equal to the tax credit shall be paid by the permitholder to the National Association of Jai Alai Frontons. <u>550.1646, F.S.</u></p> <p>\$30,000 per performance exemption if live handle during the preceding state fiscal year was less than \$15 million. This exemption applies to charity performances. <u>550.09511(2)(a)1., F.S.</u></p> <p>A permitholder conducting fewer than 100 performances in any calendar year shall pay to the state the same aggregate amount of daily license fees on live games, admissions tax, and tax on live handle as that paid during the most recent prior calendar year in which at least 100 live performances were conducted. <u>550.09511(4), F.S.</u></p>	<p>Permitholders are allowed a credit of up to 1% of the paid taxes for the previous taxable year. The credit, if taken, is applied against taxes on live handle due for a taxable year under this section, and is paid directly to the Jockeys' Guild by the permitholders. <u>550.09515(6), F.S.</u></p>		

This matrix represents a summary of 2016 Statutes. Please refer to the cite noted by statutory topic for specific language governing part-mutuel wagering.

STATUTE TOPIC	STATUTE REFERENCE	SUMMARY
FEES		
Cardroom Table Fees	849.086(5)(d), F.S.	Annual fee for each facility is \$1,000 for each table to be operated at the cardroom.
TAXES		
Tax On Cardroom Gross Receipts	849.086(13)(a), F.S.	Each cardroom operator shall pay a tax to the state of 10% of the cardroom operation's monthly gross receipts. Pursuant to Section 849.086(13)(c), F.S., one-half credited to Pari-Mutuel Wagering Trust Fund and one-half being credited to the General Revenue Fund.
Tax On Admissions	849.086(13)(b), F.S.	15% of admission charge, or 10 cents, whichever is greater, for entrance to the cardroom. This tax only applies if a separate admission fee is charged for entry into the cardroom facility. If a single admission fee is charged allowing entry to both or either the pari-mutuel facility and the cardroom facility, the tax is payable only once and shall be payable pursuant to Chapter 550.
FINES		
Administrative Fine	849.086(14)(c), F.S.	An administrative fine up to \$1,000 for each violation may be imposed on any person who has violated or failed to comply with the provisions of Section 849.086, F.S.
ANNUAL DISBURSEMENT TO COUNTIES AND MUNICIPALITIES		
Annual Disbursement To Counties and Municipalities	849.086(13)(h), F.S.	One-quarter of moneys deposited into the Pari-Mutuel Wagering Trust Fund shall, by October 1 of each year, be distributed to the local counties or municipalities where the approved cardrooms are located.

This matrix represents a summary of 2016 Statutes. Please refer to the cite noted by statutory topic for specific language governing operation of cardrooms.

STATUTE TOPIC	STATUTE REFERENCE	SUMMARY
FEES		
Slot License Fee	551.106(1)(a), F.S.	Annual fee for each slot machine facility is \$2 million paid with the initial license application and annual thereafter on the anniversary date of the issuance of the initial license.
Compulsive or Addictive Gambling Prevention Program Fee	551.118(3), F.S.	Annual fee for each slot machine facility is \$250,000 paid at the same time the annual license fee is due, and annual thereafter.
TAXES		
Tax on Slot Revenue	551.106(2)(a) and 551.106(3), F.S.	The tax rate on slot machine revenues is 35%. Payment for the tax on slot machine revenues shall be remitted by 3 p.m. on the 5th day of each calendar month for taxes imposed and collected for the preceding calendar month. If the 5th day of the calendar month falls on a weekend, payments shall be remitted by 3 p.m. the first Monday following the weekend.
FINES		
Failure to Pay Slot Tax Fine	551.106(4), F.S.	Up to \$10,000 for each day tax payment is not remitted timely.
Civil Fine	551.107(11), F.S.	The division may impose a civil fine of up to \$5,000 for each violation of this chapter or the rules of the division.
False Statement Fine	551.109(1), F.S.	Up to a \$10,000 fine or civil penalty for any person who knowingly makes or causes to be made, or aids, assists, or procures another to make a false statement in any report, disclosure, application, or any document required under Chapter 551, or any rule adopted under Chapter 551.
Unauthorized Possession of Slot Machines Fine	551.109(2), F.S.	Up to a \$10,000 administrative fine or civil penalty for any person who possesses a slot machine without the license required by Chapter 551, or who possesses a slot machine at any location other than at the slot machines licensee's facility.
PENALTIES		
Slot Machine Licensee Civil Penalties	551.117, F.S.	Up to a \$100,000 civil penalty for each count or separate offense against the slot machine licensee for violation of Chapter 551, or any rule adopted by the division.

This matrix represents a summary of 2016 Statutes. Please refer to the cite noted by statutory topic for specific language governing slot operations.